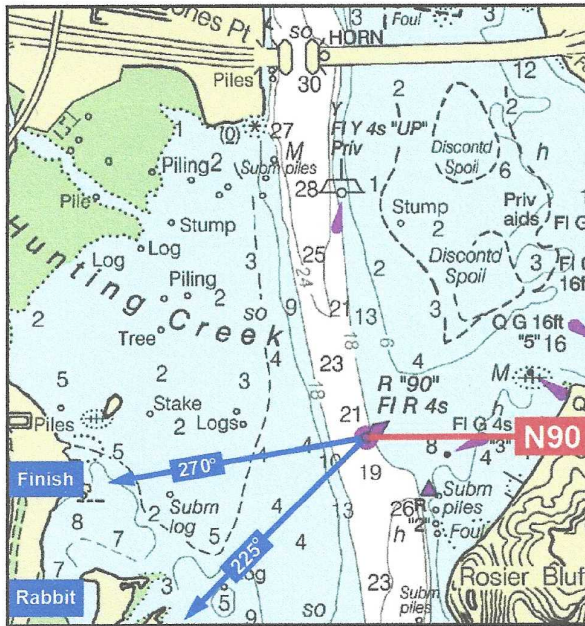


Mount Vernon Courses



Rabbit Start

One boat is designated the “rabbit,” who opens a starting gate through which the other boats start. If the wind is from the south, the rabbit sails from N90 as close to a close-hauled course as possible on a port tack. If the wind is from the north, the rabbit sails on a 225° heading. The rabbit announces (by radio) the course for each fleet, approaching N90, one minute prior to opening the gate, and when the gate opens. The rabbit holds course for two minutes or until all boats have passed through the gate.

Pursuit Start

Each boat is assigned an individual start time based on PHRF and crosses a line

due west (270°) of N90 at or after that time.

Courses

The turning mark will be announced at the skippers’ meeting or by the rabbit on channel 69, and is left to port. Except when GC 81 is the turning mark, GC 79 must be rounded on the channel side in both directions.

Turning Mark	Distance (NM)
GC 81	7.24
GC 77	9.20
GC 73	11.38
GC 71	13.08
GC 69	14.10
GC 67	15.36

Finish

A boat finishes when any part of her hull has reached a line due west (270°) of N90 after sailing the course. All skippers are responsible to report their finish times (using GPS-synchronized local time in HH:MM:SS format) to officers@discsailing.org.

