



**2022 Sunfish US Masters Championship
October 13-16, 2022**

Sailing Instructions

OA: Bay Waveland Yacht Club (www.bwyc.org)
Endorsed by International Sunfish Class Association (ISCA)
Endorsed by US Sunfish Class Association (USSCA)

1 RULES

- 1.1 The regatta will be governed by the rules as defined in the Racing Rules of Sailing (RRS).
- 1.2 The US SAILING Prescriptions to RRS 60.3, 61.4, 67, 70.5(a), 76.1 and Appendix R will apply. In addition, Appendix V (Alternative Penalties) will apply.

2 CHANGES TO THE SAILING INSTRUCTIONS

Any change to the sailing instructions will be posted before 0900 on the day it will take effect, except that any change to the schedule of races will be posted by 2000 on the day before it will take effect.

3 NOTICES TO COMPETITORS

Notices to competitors will be posted on the official notice board located in the bar area of Bay Waveland Yacht Club AND on the Regatta Network event site: <https://www.regattanetwork.com/event/24026>

4 SIGNALS MADE ASHORE

- 4.1 The signals made ashore will be displayed from the flagpole at the East side of the property.
- 4.2 When flag AP is displayed ashore '1 minute' is replaced with 'not less than 30 minutes' in race signal AP.

5 SCHEDULE OF RACES

Date	Time	
Thursday, Oct 13	1430	Practice Race
Friday, Oct 14	1015	Competitor's Meeting
Friday, Oct 14	1115	First scheduled Warning of the Day, multiple races to follow
Saturday, October 15	1030	First scheduled Warning of the Day, multiple races to follow
Sunday, October 16	1030	First scheduled Warning of the Day, multiple races to follow
	1400	No Warning after this time

- 5.1 To alert boats that a race or sequence will begin soon, one long sound will be made one (1) minute before class/warning signal is made.

6 CLASS FLAG

The class flag will be a red Sunfish logo on a white background.

7 RACING AREA

Racing will be in the Bay of St. Louis.

8 THE COURSES

- 7.1 The diagrams in Attachment 1 show the courses, including the approximate angle between legs, the order in which marks are to be passed, and the side on which each mark is to be left.
- 7.2 If a gate mark (2s or 2p) is missing the remaining mark shall be left to port.

9 MARKS

- 9.1. Original marks will be orange tetrahedrons. In the event that only one mark is in place for a gate, it shall be left to port.

- 9.2. The Start and Finish mark will be an orange ball or RC vessel.
- 9.3. New rounding marks, when used in accordance with SI 11, CHANGE OF THE NEXT LEG OF THE COURSE will be yellow tetrahedrons.

10 THE START

- 10.1. Races will be started by using RRS 26.
- 10.2. The start line will be between the orange flag on the RC vessel and an orange ball or RC vessel.
- 10.3. RRS A4 and A5 are changed: A boat starting later than 5 minutes after her starting signal will be scored Did Not Start.
- 10.4. The RC will attempt to hail premature starters. Failure to hail, the order or timing of the hail, or the failure to hear the hail will not be grounds for redress. This changes RRS 62.1.

11 CHANGE OF THE NEXT LEG OF THE COURSE

To change the next leg of the course, the race committee will lay a new mark (or move the gate or move the finishing line) and remove the original mark as soon as practicable. When in a subsequent change, a new mark is replaced, it will be replaced by an original mark.

12 THE FINISH

The finishing line will be between the blue flag on the RC vessel and an orange ball or RC vessel.

13 PENALTY SYSTEM

- 13.1 Appendix V will apply.
- 13.2 Penalties for breaking a rule other than those of Part 2, RRS 31 or RRS 42 will be determined by the protest committee. Penalties may be less than disqualification. The scoring abbreviation for a discretionary penalty imposed under this instruction will be DPI.

14 TIME LIMITS AND TARGET TIMES

Boats still racing 30 minutes after the first boat sails the course and finishes will be scored Time Limit Expired (TLE), as per SI 16.5 without a hearing. This changes RRS 35, A4.1, A5, and A11.

15 PROTESTS AND REQUESTS FOR REDRESS

- 15.1. Protest forms are available in the Club Office. Protests and requests for redress or reopening shall be delivered there within the appropriate time limit.
- 15.2. The protest time limit is 60 minutes after the race committee finish vessel docks following the last race of the day.
- 15.3. Notices will be posted no later than 30 minutes after the protest time limit to inform competitors of hearings in which they are parties or named witnesses. Hearings will be held on the upper level of the Bay Waveland Yacht Club beginning at the time posted.
- 15.4. Breaches of SI 17 and 20 will not be grounds for a protest by a boat. This changes RRS 60.1(a).
On the last scheduled day of racing a request for redress based on a protest committee decision shall be delivered no later than 30 minutes after the decision was posted.

16 SCORING

- 16.1. One (1) race is required to constitute a series.
- 16.2. A maximum of eleven (11) races will be sailed.
- 16.3. When fewer than six (6) races have been completed, a boat's series score will be the total of her race scores.
- 16.4. When six (6) to eleven (11) races have been completed, a boat's series score will be the total of her race scores excluding her worst score.
- 16.5. Boats scored TLE will be scored points equal to the number of boats which sail the course and finish plus two (2) points. This changes RRS 35, A4.1, A5 and A11.

17 SAFETY REGULATIONS

- 17.1 Check-in Procedures: Prior to the warning signal for the first race of each day in which it intends to



compete, each boat shall check in by sailing past the stern of the race committee signal vessel on starboard tack, hail her sail number and obtain acknowledgement of the race committee. Boats that fail to check-in may be scored DNS. This changes RRS A5.1.

17.2 A boat that retires from a race shall notify the race committee as soon as practicable. Failure by any competitor to inform the race committee that they have retired from racing may result in a 20% penalty in the competitor's last completed race. This changes RRS A5.1.

18 EQUIPMENT AND MEASUREMENT CHECKS

A boat or equipment may be inspected at any time for compliance with the class rules and sailing instructions. On the water, a boat may be instructed by an USSCA Measurer or his designate to proceed immediately to a designated area for inspection.

19 EVENT ADVERTISING

Boats may be required to display advertising chosen and supplied by the organizing authority.

20 SUPPORT VESSELS

- 20.1. The organizing authority will not provide support vessels.
- 20.2. Coach/support vessels must register prior to the first competitor's meeting on the first day of racing with the organizing authority.
- 20.3. Coach/support vessels shall carry a working VHF radio and monitor the race on VHF channel 72.
- 20.4. Support vessels include those carrying team leaders, coaches and other personnel that interact with competitors.
- 20.5. Support vessels shall stay outside the racing area from the time of the preparatory signal until all boats have finished or retired or the race committee signals a postponement, general recall or abandonment. The racing area is defined as no less than 100 meters from any boats that are racing and outside the lay lines from the marks defining the course.
- 20.6. Support vessels shall remain 50 meters below the starting line between the preparatory and starting signals. After the starting signal, they may only proceed to the windward mark up the left side of the course and must return to the leeward mark via the same side. At the finish line, they must remain 100 meters beyond the extensions of the finish line.
- 20.7. No communication from the support vessels (including verbal and hand signals) will be permitted after the preparatory signal and until the competitor completes the race.
- 20.8. No competitor shall be towed to the racecourse. All sailors must make it to the racecourse on their own. Boats shall not be towed from the racecourse unless flag W is displayed on a race committee vessel. When flag W is displayed a tow shall not exceed 5 knots.
- 20.9. If a support vessel does not comply with applicable rules, restrictions and /or instructions a discretionary penalty may be applied by the protest committee to some or all associated competitors and may include restrictions on the movement of their support vessel.
- 20.10. Support vessels may be required to act as safety vessels upon instruction

21 RADIO COMMUNICATION

Except in emergency, a boat shall neither make radio transmissions while racing nor receive radio communications not available to all boats. This restriction also applies to mobile telephones.

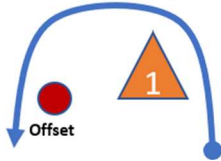
22 DISCLAIMER OF LIABILITY

Competitors participate in the regatta entirely at their own risk. See Rule 4, Decision to Race. The organizing authority will not accept any liability for material damage or personal injury or death sustained in conjunction with or prior to, during, or after the regatta.

Attachment 1 – Course Diagrams

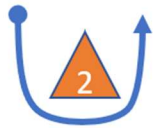
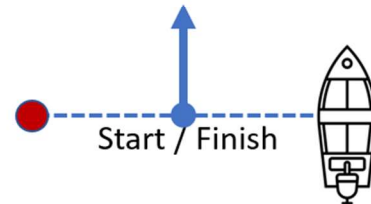
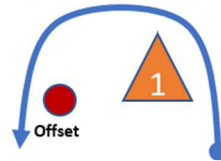
Course 1

Start – 1 – Offset – 2 – 1 – Offset – 2 – Finish
(if set) *(if set)*



Course 1G

Start – 1 – Offset – 2P/2S – 1 – Offset – 2 – Finish
(if set) *(if set)*



* The Start/Finish Line is open

* The Start/Finish Line is open