

Capital City Laser Regatta

March 26-27, 2022
Potomac River Sailing Association
Washington Sailing Marina,
Alexandra, VA 22314



Sailing Instructions

1. Rules

- 1.1. The regatta will be governed by the rules as defined in The Racing Rules of Sailing.
- 1.2. **Rig Swapping Turned On** - Entrants shall start and finish together and be scored as a single fleet. Competitors may choose Standard, Radial or 4.7 rigs at their discretion, and change rigs throughout the regatta, provided that all rig changes are made on shore and all sails have the same number.
- 1.3. All hails will use the last 4 digits of the sail number. The race committee will attempt to hail OCS boats. The timing of such hails, the order of hails, or the failure of a competitor to hear the hails shall not be considered an improper action or omission of the RC under RRS 62.1(a).
- 1.4. Appendix U (**Audible-Signal Racing System**) shall apply
- 1.5. Appendix V, Rule V1 (**One-Turn Penalty Outside the Zone**) and V2 (**Post-Race Penalty**) shall apply.

2. Notices to Competitors

- 2.1. Notices to competitors will be posted on the Official Notice Board located online through Regatta Network found at <https://www.regattanetwork.com/event/24062>

3. Changes to Sailing Instructions

- 3.1. Any change to the sailing instructions will be posted by the end of the competitors meeting on Saturday and for Sunday before 0900, except that any change in the schedule of races will be posted before protest time expires on the day before it will take effect.

4. Signals Made Ashore

- 4.1. Signals made ashore will be displayed from a staff on the committee boat on the finger pier between the ramps.
- 4.2. When Flag AP is displayed ashore, '1 minute' is replaced with 'not less than 20 minutes' in Race Signal AP.

5. Racing Area

- 5.1. The racing area will be on the Potomac River east of the Reagan Airport Landing pier.

6. Schedule of Races

Saturday, 26 March

1030 Coffee in the small lawn area near the cranes

1030-1130 On-shore check-in (to confirm/report changes in sail number)

1130 Skippers Meeting held near the cranes

1200 First Warning Signal

1600 Cookout party on the lawn about 100 yards southwest of the crane area.

Sunday, 27 March

0945 Coffee in the small lawn area near the cranes

1100 First Warning Signal

Awards to follow after last race (hotdogs and beer)

There will be a maximum of 4 races per day.

7. Courses

7.1. The diagrams and descriptions in Attachment A define the courses, including the order in which marks are to be passed, and the side on which each mark is to be left.

7.2. The course to be sailed will be designated by flags on the signal boat with a letter (W, O, T, or R) and a number (1, 2, or 3).

8. Marks

8.1. The windward, reach, and leeward marks will be **orange** cylinders marks. .

8.2. The start/finish mark will be a small white cylinder with a **red** flag.

9. The Start

9.1. The starting line will be between a staff displaying an **orange** flag on the race committee signal boat and white cylinder with a **red** flag.

9.2. A boat may start up to five minutes after her starting signal. A boat not starting shall be scored Did Not Start.

10. Change of the Next Leg of the Course

10.1. To change the next leg of the course, the race committee may lay a new mark (or gate or finishing line mark) and remove the original mark(s) as soon as possible. When in a subsequent change a new mark is replaced, it will be replaced by an original mark. The race committee may also move an existing mark.

11. The Finish

11.1. The finishing line will be the same as the starting line.

11.2. Flag A displayed, with no sound, while boats are finishing means 'No more races will start today.'

12. Time Limit & Abandonment

12.1. The time limit for the first boat to sail the course in compliance with RRS 28 and finish is 60 minutes. Boats still racing more than 15 minutes after the first boat complies with RRS 28 and finishes will be scored TLE. This changes rules 35, 63.1, A5 and A10.

12.2. The score for TLE is the number of finishers within the time limit plus 1. This changes rule A5.2.

13. Penalties and Protests

13.1 The first two sentences of rule 44.1 are changed to: 'A boat may take a One Turn Penalty when she may have broken a rule of Part 2 or rule 31 while racing. However, when she may have broken a rule of Part 2 while in the zone around a mark other than a starting mark, her penalty shall be a Two Turns Penalty.'

13.2 For penalties taken after a race Appendix V2 shall apply.

13.3 All protest must be lodged on the water with the Race Committee at the end of the race in which the incident occurred.

13.4 The protest time limit is 30 minutes after the race committee signal vessel docks. The protest time-limit will be posted on the official notice board as soon as practical.

14. Scoring

14.1. A minimum of one race must be completed to constitute a regatta.

14.2. When fewer than 5 races have been completed, a boat's series score will be the total of her race scores (1 drop for 5 or more).

15. Safety

15.1. Personal flotation devices shall be worn at all times while racing, except briefly while changing or adjusting clothing or personal equipment.

15.2. All boats shall check in with the race committee Signal boat displaying code flag "L", prior to the warning signal of the first race each day by sailing past the stern of the signal boat and hailing her sail number until acknowledged by the race committee.

15.3. A competitor that retires from a race or intends not to start a race shall inform the nearest safety or race committee boat as soon as possible.

15.4. Competitors participate in the regatta entirely at their own risk. See Rule 3, 'Decision to Race'. The organizing authority will not accept any liability for material damage or personal injury, or death sustained in conjunction with or prior to, during or after the Regatta.

16. Prizes

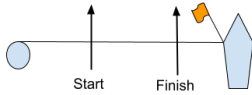
16.1. Prizes will be awarded to the top finishers and top female. The number of prizes will be based on the number of entries and will be at the discretion of the organizing authority.

17. Disclaimer of Liability

17.1 Competitors participate in the regatta entirely at their own risk. See RRS 3, Decision to Race. The organizing authority will not accept any liability for material damage or personal injury or death sustained in conjunction with or prior to, during or after the regatta.

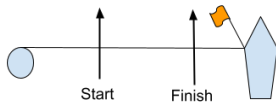
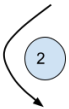
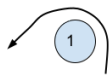
Attachment A - Courses

W



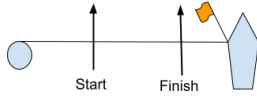
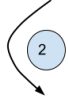
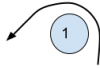
Course W - Windward/Leeward	
Signal	Mark Rounding Order
W1	Start - 1 - 2 - Finish (once around)
W2	Start - 1 - 2 - 1 - 2 - Finish (twice around)
W3	Start - 1 - 2 - 1 - 2 - 1 - 2 - Finish (three times around)

O



Course O - Olympic	
Signal	Mark Rounding Order
O2	Start - 1 - 2 - 3 - 1 - 3 - Finish (triangle hotdog)
O3	Start - 1 - 2 - 3 - 1 - 3 - 1 - 3 - Finish (triangle - two hotdogs)

T



Course T - Triangles	
Signal	Mark Rounding Order
T1	Start - 1 - 2 - 3 - Finish (one triangle)
T2	Start - 1 - 2 - 3 - 1 - 2 - 3 - Finish (two triangles)
T3	Start - 1 - 2 - 3 - 1 - 2 - 3 - 1 - 2 - 3 - Finish (three triangles)

R



Course R - Rectangle	
Signal	Mark Rounding Order
R1	Start - 1 - 2 - 3 - 4 - Finish (one rectangle)
R2	Start - 1 - 2 - 3 - 4 - 1 - 2 - 3 - 4 - Finish (two rectangles)
R3	Start - 1 - 2 - 3 - 4 - 1 - 2 - 3 - 4 - 1 - 2 - 3 - 4 - Finish (three rectangles)