

Dallas Corinthian Yacht Club
66th Annual Heritage Cup Regatta
May 20-22, 2022

SAILING INSTRUCTIONS

1. Rules.

- 1.1 The regatta will be governed by the rules as defined in *The Racing Rules of Sailing for 2021-2024* (RRS).
- 1.2 The notation “[DP]” in a rule in these Sailing Instructions means that the penalty for a breach of a rule may, at the discretion of the protest committee, be less than disqualification.

2. Notices to Competitors.

Notices to competitors will be posted on the windows located on the north side of the Dallas Corinthian Yacht Club (DCYC) clubhouse (near the check-in desk).

3. Changes to the Sailing Instructions.

Any change to the sailing instructions will be posted before 9:00AM on Saturday the 21st, and 8:30 AM on Sunday the 22nd, except that any change in the schedule of races will be posted by 7:00 PM on the day before it will take effect.

4. Signals Made Ashore.

- 4.1 Signals made ashore will be displayed on the DCYC flagpole (near the swimming pool).
- 4.2 Code Flag “AP” (Answering Pennant) with two sound signals (one when lowered) means “The race is postponed”. The warning signal will be made not less than 30 minutes after the “AP” is lowered.

5. Schedule of Races.

<i>Day and Date</i>	<i>Time</i>	<i>Event</i>
Saturday, May 21, 2022	9:00 a.m.	Competitors Briefing
	10:15 a.m.	First Warning Signal
		Additional races to follow
Sunday, May 22, 2022	9:15 a.m.	First Warning Signal
		Additional races to follow

No warning signal will be made after 1:00 PM on Sunday.

DCYC 2022 Annual Heritage Cup Regatta

6. Class Flags.

- 6.1 The **PHRF Spinnaker** class will use numeral pennant 1 as the class flag.
- 6.2 The **PHRF Jib and Main** classes will use numeral pennant 2 as the class flag.
- 6.3 The **J-24** class will use the **J-24 Class Flag** as its class flag.
- 6.4 The **Cruising** class will have a single start and use numeral pennant 3 as the class flag.

7. Racing Area.

- 7.1 The racing area is on Lewisville Lake, just North of the NTTA Toll Bridge. See ATTACHMENT 2 – RACING AREAS.
- 7.2 The racing area for the Cruising class is described in ATTACHMENT 3 – CRUISING AREAS

8. Courses, Marks, Starting and Finishing Lines.

8.1 J-24 Class, PHRF Classes.

- a. The J-24 and PHRF fleets will use race area **TANGO** (see ATTACHMENT 2 – RACING AREAS).
- b. The courses to be used, the marks of the course, the relative position of the marks, the side of a mark to be rounded, and the starting and finishing lines are illustrated in ATTACHMENT 1 - COURSE DIAGRAM.
- c. The windward mark for S course is a **YELLOW** cylinder with a small **WHITE** tetrahedron offset and is rounded to port
- d. The windward mark for L course is an **ORANGE** tetrahedron and is rounded to port.
- e. The leeward gates will be **YELLOW** cylinders.
- f. The starting line is between a small **ORANGE** tetrahedron and a staff displaying an **ORANGE flag** on the Race Committee Signal boat.
- g. The finish line will be between a small **GREEN** tetrahedron and a staff displaying a **BLUE flag** on the STARBOARD side of the Race Committee Signal Boat.

8.2. Cruising Class.

- a. The Cruising Class will use Lake Lewisville as the racing area (See ATTACHMENT 4 – CRUISING AREAS) and the relative position of marks as noted in the diagram.
- b. The courses to be used, the marks of the course, the side of a mark to be rounded, and the starting and finishing lines are described here
 - 1. Course
 - a. Start will be on PHRF start line, OR on the RED-GREEN permanent line in the event of a north wind.

- b. Pass through center span of bridge at marked location “1”
- c. Pass through “the cut” at marked location “2”
- d. Take the temporary mark, a red cylinder, “3” to port
- e. Pass through “the cut” at marked location “2”
- f. FINISH through center span of bridge at marked location “1”
 - i. A chase boat will be at the bridge to log your finish time

9. The Start.

- 9.1 Races will be started by using RRS 26. The race committee may sound several brief attention signals prior to the first warning signal in a starting sequence.
- 9.2 Boats whose warning signal has not been made shall keep clear of the starting area during the starting sequence for other fleets. [DP]
- 9.3 A boat starting later than 4 minutes after its starting signal will be scored Did Not Start. This changes RRS A4 and A5.
- 9.4 Individual Recalls will be signaled in accordance with RRS 29.1. The Race Committee may attempt to notify premature starters by transmitting on the VHF channel assigned to the respective sailing area. Failure of the over early boat(s) to receive such notification or failure of the RC boat to send such notification shall NOT be grounds for redress.

10. Change of the Next Leg of the Course.

- 10.1 To change the next leg of the course, the race committee will lay a new mark and remove the original mark as soon as practicable. When in a subsequent change a new mark is replaced, it will be replaced by an original mark. The Offset Mark no longer applies with a course change and will be removed as soon as practical.

11. Time Limits.

- 11.1 If no boat of a class has passed the first mark of the course within 1 hour of the starting signal of the class, the race will be abandoned.
- 11.2 A race shall be abandoned if no boat sails the course and finishes within 2 hours from the starting signal for her class.
- 11.3 Boats failing to finish within 30 minutes after the first boat in their class sails the course and finishes will be scored Did Not Finish without a hearing. This changes RRS 35 and A4 and A5.

DCYC 2022 Annual Heritage Cup Regatta

12. Protests and Requests for Redress.

- 12.1 Protest forms are available at the protest desk located at the DCYC clubhouse, (downstairs where the check-in desk was located). Protests and requests for redress or reopening shall be delivered there within the appropriate time limit.
- 12.2 For each class, the protest time limit is 30 minutes after its race committee signal boat docks after the last race of the day. The time of docking will be signaled by a sound and the time posted on the official notice board.
- 12.3 The Protest Committee will endeavor to post notices to inform competitors of the times and locations of hearings in which they are parties or named as witnesses as soon as practical after the close of the protest deadlines.
- 12.4 Notices of protests by the race committee, technical committee, or protest committee will be posted to inform boats under rule 61.1(b).

13. Safety Regulations.

- 13.1 Check-In: Before the warning signal of her first race of each day and **after the “L” flag is raised**, each boat shall sail on starboard tack past the stern of the race committee signal boat and hail her sail number until acknowledged by the race committee. [DP]
- 13.2 A boat that retires from a race shall notify the race committee as soon as practical. [DP]

14. Radio Communication.

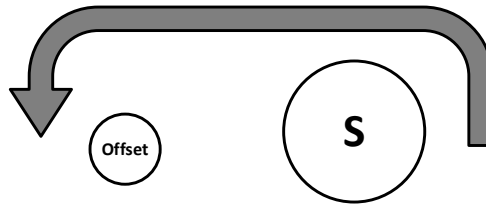
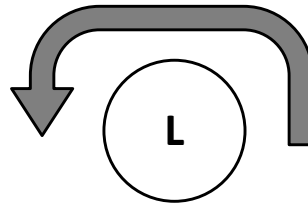
- 14.1 The race committee may communicate with competitors over VHF channel 72 for race area **TANGO**.
- 14.2 Except in an emergency, a boat that is racing shall not make or receive voice or data transmissions not available to all boats. [DP]
- 14.3 Not having or monitoring a VHF radio shall not be grounds for redress.

15. Special Rules Applicable Only to J-24 Class.

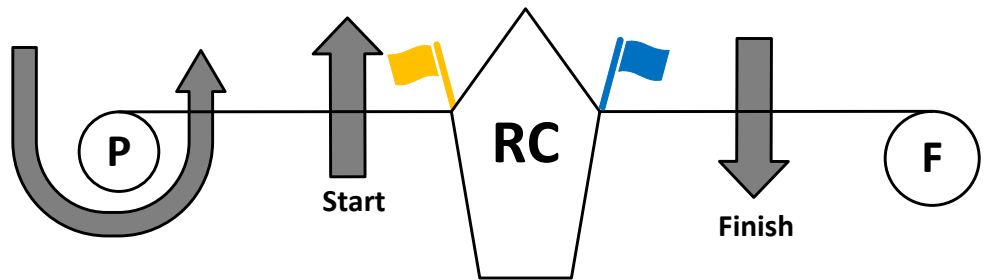
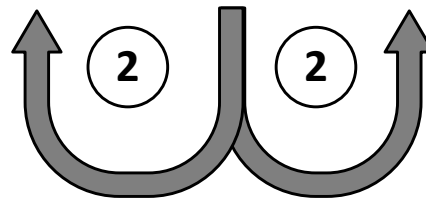
See J-24 Addendum

Attachment 1 – Course Diagram

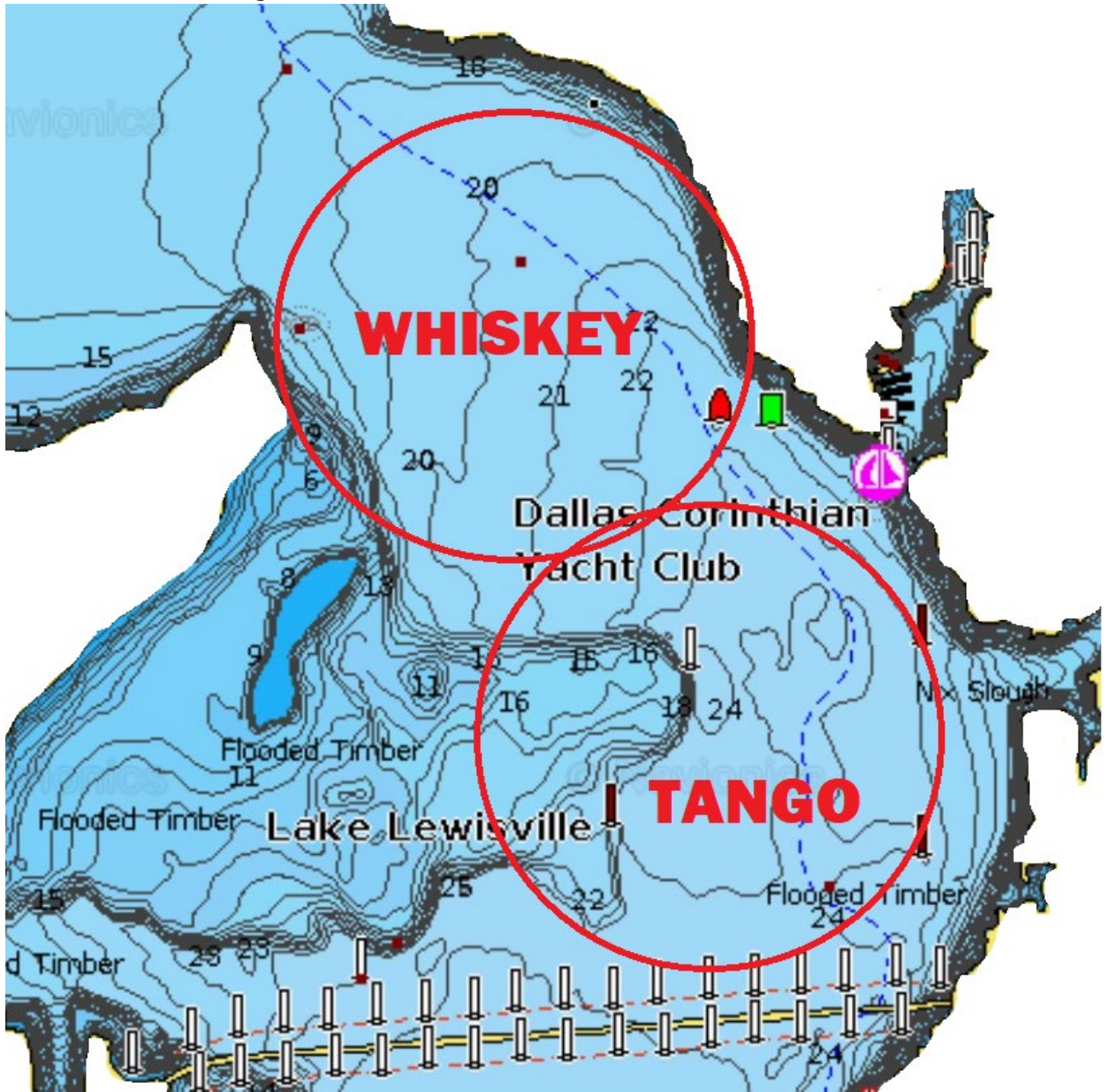
Signal	Mark Rounding Order
L2	Start-L-Finish
L4	Start-L-2-L-Finish
S2	Start-S-Finish
S4	Start-S-2-S-Finish



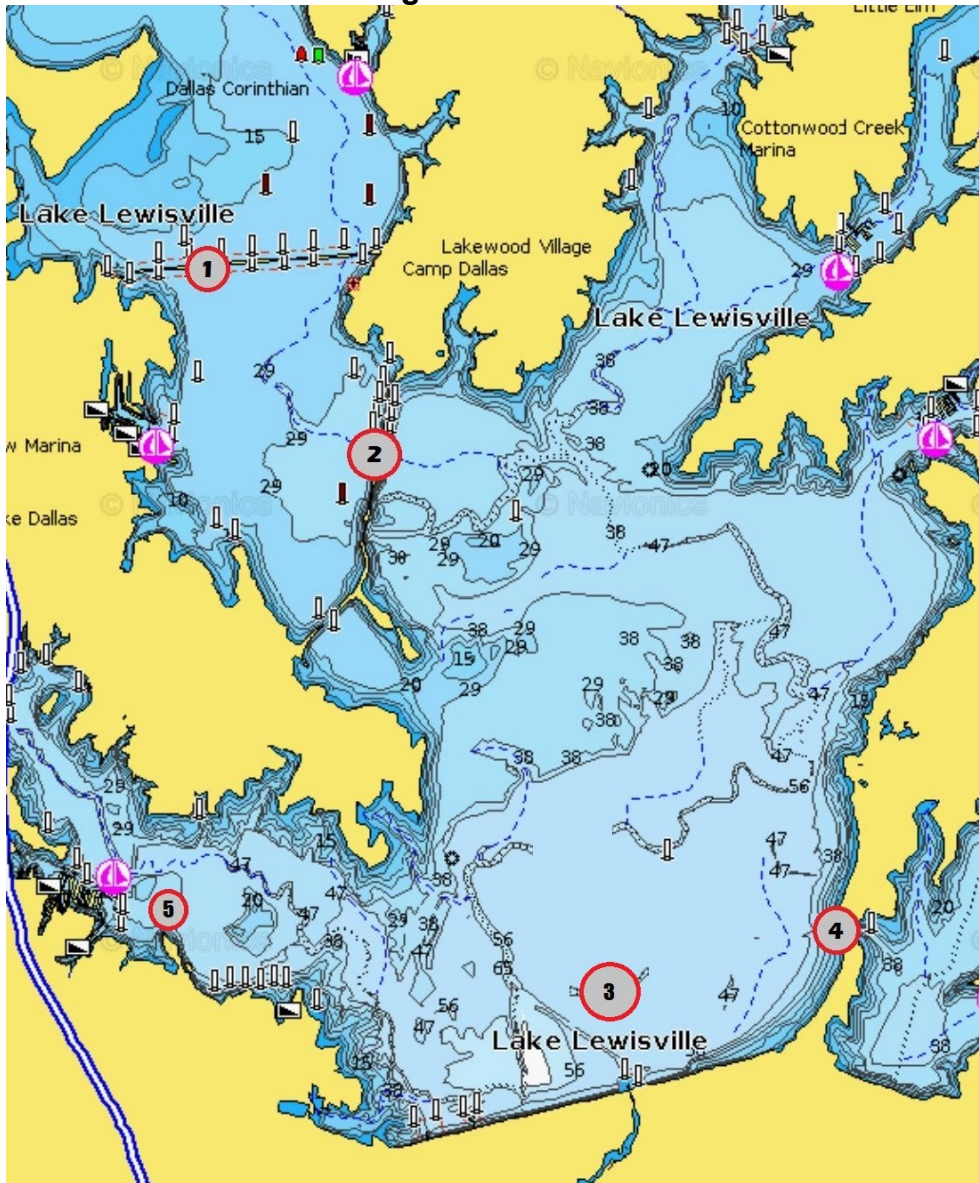
Marks	Type
L	Orange Tetrahedron
S	Yellow Cylinder
2	Yellow Cylinders (gate)
Offset	White Tetrahedron
P	Orange Tetrahedron
F	Green Tetrahedron



Attachment 2 – Racing Areas



ATTACHMENT 3 – Cruising Areas



DCYC 2022 Annual Heritage Cup Regatta

Addendum to Sailing Instructions J/24 Class Only

The Sailing Instructions for the J/24 Class Only shall be amended as follows. Where there is conflict between the Sailing Instructions and this addendum, this addendum shall govern.

Any Class Rule stated in the Notice of Race and Addendum shall apply to these Sailing Instructions.

1. Penalties for Breaking Some Class Rules

- 1.1. District Qualifiers that break any of these Class Rules will receive a scoring penalty calculated according to RRS 44.3(c). Breaking one or more of these Class Rules shall be cumulative and result in one (1) scoring penalty of 20%.

Class Rule	Description of Class Rule
B.3	Measurement Certificate ¹ and/or Inventory of Required and Optional Equipment is not on board.
C.5.1(a)(1)	A minimum of one bucket of at least 9 litres capacity with a lanyard of at least one meter in length.
C.5.1(a)(2)	One anchor with or without chain. If a chain is used the anchor and its chain shall weight not less than 6kg nor more than 9kg. Any line not less than 40m and with a minimum of 8mm in diameter shall be attached to the anchor or chain. The anchor shall be secured against movement in the event of capsize.
C.5.1(a)(3)	A minimum of one fire extinguisher: type and capacity to comply with local regulations.
C.5.1(a)(4)	A minimum of one lifesaving device with attached drogue (sea anchor) on deck and ready to be thrown overboard.
C.5.1(a)(5)	A first aid kit.
C.5.1(a)(6)	A minimum of one water resistant flashlight.
C.5.1(b)(1)	One outboard engine/motor of 12 kg. minimum weight empty of fuel. The engine/motor shall be stowed under a quarter berth or aft of the sill of the companionway. Both the engine/motor and its fuel tank/battery shall be secured against movement in the event of capsize. Electric motors shall be weighed with a single battery if the battery is mounted on the motor during use.
C.5.1(b)(2)	Equipment capable of cutting the standing rigging.

- 1.2. The protest decision shall include whether the same penalty will be applied to other races in which the same infringement likely occurred.

¹ If a District Qualifier has received a waiver from the District Governor, he/she should carry the email approving same in place of the measurement certificate until one has been obtained.