



Sailing Instructions – Santa Cruz 27 Nationals 2022



1) RULES

- 1. The regatta will be governed by the rules as defined in The Racing Rules of Sailing 2021 – 2024*
- 2. Competitors shall wear a US Coast Guard (USCG) approved personal flotation device (PFD) while on the water other than for brief periods while adding or removing clothing.*
- 3. The Santa Cruz 27 class will race under Santa Cruz 27 Class Constitution.
<http://www.sc27.org/documents> (SC27 Constitution September 2019.pdf).*

2) NOTICES TO COMPETITORS

- 1. Notices to Competitors will be posted on the official regatta notice board located Morro Bay Yacht Club lower deck.*
- 2. On the water the Race Committee will use VHF channel 68 for communication.*

3) CHANGES TO SAILING INSTRUCTIONS

- 1. Any change to these sailing instructions will be posted on the Official Notice Board before 1000 hours on the day it will take effect, except that any change to the schedule of races will be posted by 1900 hours on the day before it will take effect.*

4) SIGNALS MADE

- 1. Signals ashore will be displayed from Morro Bay Yacht Club lower Race Deck.*
- 2. Signals afloat will be displayed from Morro Bay Yacht Club RC boat(s).*
- 3. When flag AP is displayed ashore, boats shall not leave the harbor; wait for further instructions.*
- 4. When flag AP is removed ashore, '1 minute' is replaced with 'not less than 60 minutes'. This changes rule Race Signals AP.*
- 5. Signals made afloat are described in attachment A.*
- 6. A courtesy signal of multiple horn blasts will occur approximately 1 min prior to the start of the 5min sequence.*

5) COMMUNICATION WITH COMPETITORS

- 1. The Race Committee will use VHF channel 68 for communication.*
- 2. In the case of radio failure the RC may be hailed by cell phone regarding: emergency or intention to retire.
(1) Dave Sheesley 310-422-3348
(2) Judi Sheesley 805- 674-0808*



Sailing Instructions – Santa Cruz 27 Nationals 2022



6) SCHEDULE OF RACES

1. *Skippers meeting will be held at the back deck of the MBYC at 9:00 am on Saturday.*
2. *The scheduled time of the first warning signal of each race day is 11:55 hours. The warning signal for subsequent races will be made shortly after the conclusion of the preceding race.*
3. *The warning signal for succeeding races will be made as soon as possible after finish of preceding race.*
4. *On the last day of the regatta, no warning signal will be made after 15:00 hours.*

7) CLASS FLAG

1. *The class flags will be: SC27 Class Flag*

8) RACING AREA

1. *The sailing Area will be- See diagram in Attachment D.*
2. *Starts of buoy races will be conducted within a 2 mile radius of Morro Rock.*

9) THE COURSE(s)

1. *The table in Attachment C show the courses. Unless otherwise stated marks shall be rounded to port.*
2. *No later than the warning signal, the RC signal boat shall display the course designation.*
3. *The Start / Finish line will not be restricted*
4. *Racing on inland waters within the COLREGS demarcation line (Attachment E).*
 - (1) *ALL RACING TO BE DONE WITHIN CHANNEL NAVIGATION MARKERS.*
 - (2) *Narrow Channel rules shall apply, while racing within Navigation channels: RACERS SHALL YIELD TO ALL NON-RACING VESSELS, including swimmers and paddle boarders.*
5. *Attachments: D, E, F & G are intended to be used as guidance. They are not to be used as a navigational aid.*

10) MARKS

1. *Rounding marks will be – Inflatable Tetrahedron – See attachment B*
2. *New marks will be – Inflatable Tear-drop (unless otherwise stated in the SI)*
3. *If a buoy is used as a mark at the finish line it will be – See attachment B*

11) THE START

1. *Races will be started using rule 26.*
2. *The starting line will be between a staff displaying an orange flag on the RC signal boat and the course side of the mark or a staff displaying an orange flag on a RC boat at the port end of the line.*
3. *A boat starting later than 5 minutes after her starting signal will be scored DNS*

12) RECALLS

1. *The RC will attempt to hail the recall numbers of OCS boats after the starting signal. This changes rule 29.1.*
2. *The failure of any boat to hear the hail, promptness of the hail, failure to hail any boats, or the order of boats hailed shall not be grounds for redress.*



Sailing Instructions – Santa Cruz 27 Nationals 2022



13) BOAT RETIRING

1. A boat retiring on the water shall notify the Race Committee as soon as reasonably possible on VHF channel 68

14) PENALTIES

1. Rule 44.1 is changed so that the Two-Turns Penalty is replaced by the One-Turn Penalty.

15) CHANGE THE NEXT LEG OF THE COURSE

1. To change the next leg of the course, the RC will lay a new mark (or move the finishing line) and remove the old marks as soon as practicable.

16) THE FINISH

1. The finishing line will be between a staff displaying an orange flag on a RC boat and the course side of the designated finish mark.

17) TIME LIMIT

1. The time limit for each buoy race will 60 min. (Distance Race 6 hours)
2. Finish Window – boats failing to finish Buoy Races within 15 min. (Distance Race 1 hour) after the first boat sails the buoy course, in accordance with rule 28, will be scored TLE (Time Limit Expired as per RRS Appendix A) without a hearing. This changes rules 35, 63.1, A4 and A5.

18) EVENT PROTESTS AND REQUESTS FOR REDRESS

1. A boat intending to protest about an incident that occurs in the racing area shall notify the RC finish boat of her intention as soon as possible after finishing, identifying the boat(s) being protested.
2. Protests forms will be available at and returned to the Morro Bay Yacht Club lower deck.
3. The protest time limit is 60 minutes after the RC signal boat docks.
4. A protest hearing schedule and the location of the hearings will be posted on the official notice board no later than 30 minutes following the end of protest time.
5. In case of conflict between the Notice of Race and the Sailing Instructions (SIs), the SIs will prevail.
6. Use of Kwindoo race tracking app does not constitute out-side assistance.

19) SCORING

1. Seven races are scheduled. 4 completed races constitute a regatta.
2. When fewer than (5) races have been completed, a boat's regatta score will be the total of her race scores.
3. When five (5) or more races have been completed, a boat's regatta score will be the total of her race scores excluding her worst score.
4. RRS 2021 – 2024 low point scoring rules will be used.



Sailing Instructions – Santa Cruz 27 Nationals 2022



20) HAUL-OUT RESTRICTIONS

1. *Boats shall not be hauled out during the regatta except with and according to the terms of prior written permission of the race committee.*

21) REPLACEMENT OF EQUIPMENT.

1. *All boats and equipment shall be in compliance SC27 national class rules.*

22) CONDUCT OF COMPETITORS

1. *All competitors shall conduct themselves in accordance with US Sailing RRS*

23) PRIZES

1. *Prizes will be awarded at the discretion of the organizing authority based on participation.*



Sailing Instructions – Santa Cruz 27 Nationals 2022



Attachment A – Signals

CLASS FLAG	PREPARATORY SIGNALS					BLACK	X	FIRST SUBSTITUTE		
TBD BY RC/SI's	P	I	Z	U						
WARNING 5'↑ 0'↓	PREP SIGNAL NORMAL START 4'↑ 1'↓	OCS AT 1': ROUND ENDS 4'↑ 1'↓	OCS AT 1': 20% PENALTY 4'↑ 1'↓	OCS AT 1': DSO RESTART OK 4'↑ 1'↓	OCS AT 1': DSO NO RESTART 4'↑ 1'↓	INDIVIDUAL RECALL ↑	GENERAL RECALL ↑ 6'↓			
AP	AP/H	AP/A	AP/#	N	N/H	N/A	RED			
POSTPONED RACES NOT STARTED STAY AFLOAT ↑ ● ● ↓	POSTPONED RACES NOT START'D SIGNALS ASHORE ↑ ● ●	POSTPONED RACES NOT START'D NO MORE TODAY ↑ ● ●	POSTPONED # HOURS FROM SCHEDUL'D START ↑ ● ● ↓	ABANDONED ALL RACES START'D STAY AFLOAT ↑ ● ● ●	ABANDONED ALL RACES START'D SIGNALS ASHORE ↑ ● ● ●	ABANDONED ALL RACES NO MORE TODAY ↑ ● ● ●	PROTEST			
S	C	GREEN	RED	COURSE-CHANGE		M	L	BLUE	ORANGE	Y
SHORTENED COURSE ↑ ● ●	NEXT MARK POSITION CHANGED ● ● ● ● ●	MARK MOVED TO STARBOARD	MARK MOVED TO PORT	LEG SHORTER	LEG LONGER	REPLACES MISSING MARK ● ● ● ● ●	COME W'IN HAIL/FOLLOW ↑ ●	RC BOAT IN FINISH POSITION	START OR FINISH LINE	WEAR PFD ↑ ●
1	2	3	4	5	6	7	8	9	0	
↑ = FLAG UP ↓ = FLAG DOWN ● = 1 SOUND SIGNAL ●● = 2 SOUND SIGNAL ●●● = 3 SOUND SIGNAL — = LONG SOUND ●●●●● = REPEAT SOUNDS										



Sailing Instructions – Santa Cruz 27 Nationals 2022



Attachment B – Mark Description

Mark	Description
W1	Tetrahedron
D1	Tetrahedron
S/F	Round orange ball, or an orange flag flown from a staff on a race committee boat.
MB1	35° 21.589' N 120° 52.830' W Red-white safe water buoy “Morro Bay Approach Lighted Whistle Buoy MB”
3MR	35° 26.309' N 120° 54.517' W Green Lateral Buoy “Mouse Rock Bell Buoy 3MR”
1CR	35° 26.144' N 120° 56.803' W Green Lateral Buoy “Constantine Rock Buoy 1CR”
Club 1	Green Tetrahedron set at: 35° 23.440 N 120° 54.442' W
Point Buchan	35° 14.450' N 120° 54.583' W Red lateral Buoy “Point Buchan Lighted Whistle Buoy 16”
MBYC (F1) Eliminated	MBYC Finish 1. line Channel Marker- 14 and Flag Pole, Back Deck MBYC (See Attachment E) <i>(This finish has been Eliminated from possible Distance courses as of 9/1/22)</i>
MBYC-2 (S/F)	MBYC-2 S/F: (fore bay) line between committee boat and green channel marker. Inside Morro Bay entrance (See Attachment E)
MBYC (S)	Reaching Start: between Committee Boat and MB1 (See attachment F)
SBG	Sewer Buoy Gate : Round North White Spar Buoy to Port, South White Spar Buoy to Starboard (Attachment F) 35° 23.179' N 120° 52.529' W



Sailing Instructions – Santa Cruz 27 Nationals 2022



Attachment C – Courses

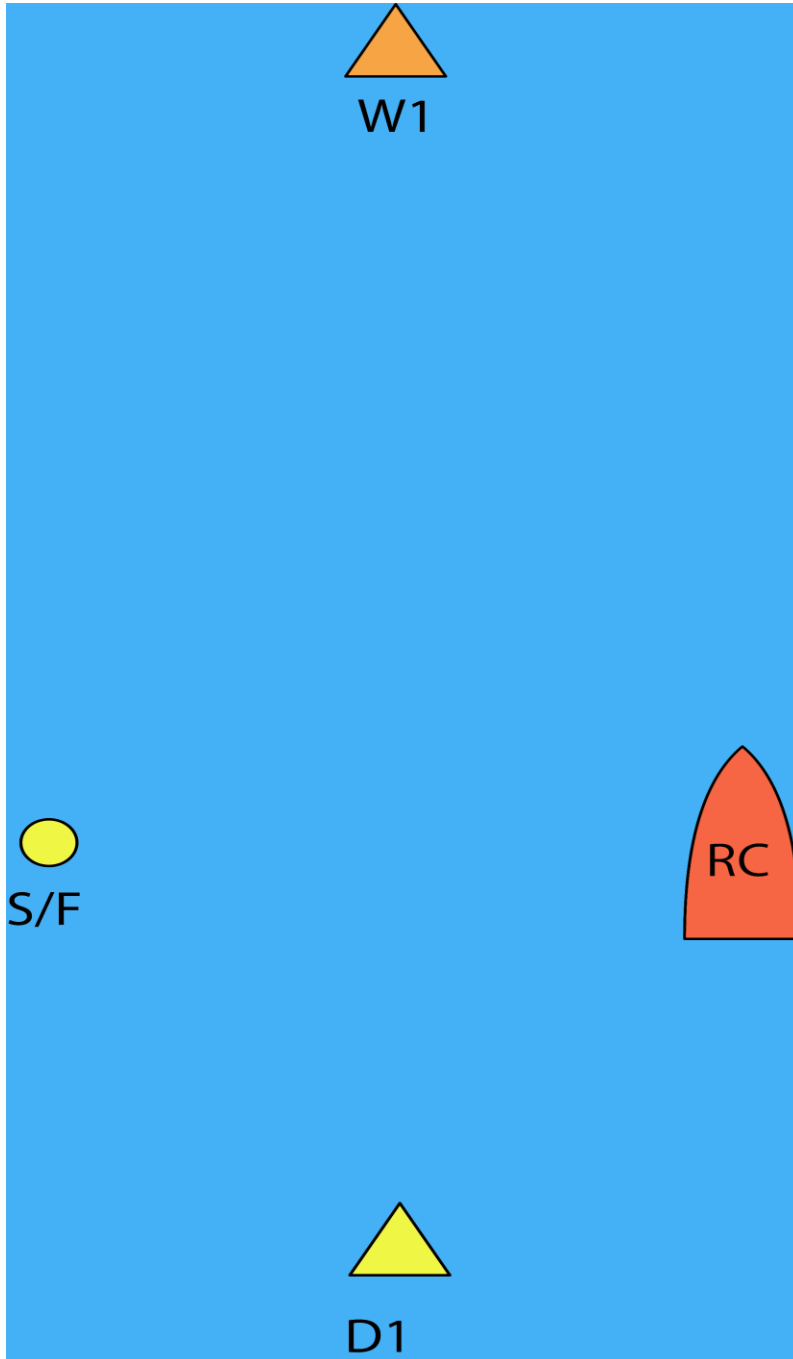
Course	Rounding Order
1	Start – W1– D1 - Finish
2	Start – W1– D1 – W1– D1 - Finish
3	Start – W1– D1 – W1– D1– W1– D1- Finish
4	Start – W1 – D1 – W1 – Finish downwind
5	Start – W1 – D1 – W1 – D1 – W1– Finish downwind
6	Start – W1 – D1 – W1 – D1 – W1– D1 – W1– Finish downwind
7	MB1 (St) – SBG – 1CR(p) – SBG(s) – MB1(p) - MBYC-2 (S/F) (Northerly Course, Estero Bay, appx 13.9 nm) See attachment G.
8	MB1 (St) – Pt Buchan(p) – MBYC-2 (S/F) (Southerly Course, Estero Bay, appx 16.1 nm) See attachment G.
9	MB1 (St) - Club 1(s) – SBG(s) – MB1(p)- MBYC-2 (S/F) (Northerly Course, Estero Bay, appx 7.1 nm) See attachment G.



Sailing Instructions – Santa Cruz 27 Nationals 2022



Attachment D – Course Diagram



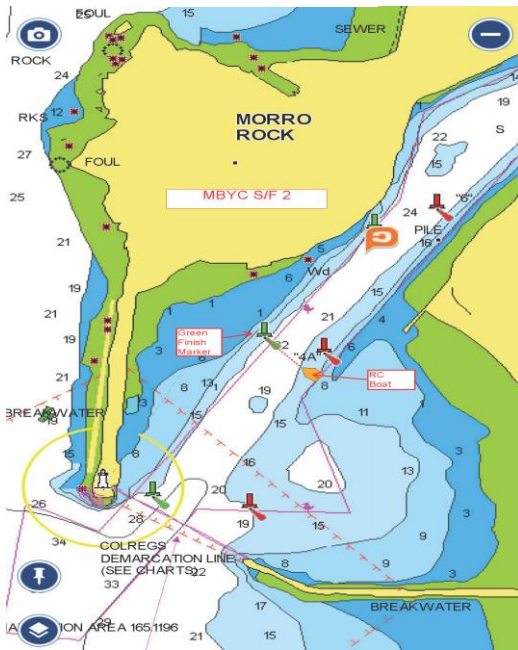


Sailing Instructions – Santa Cruz 27 Nationals 2022

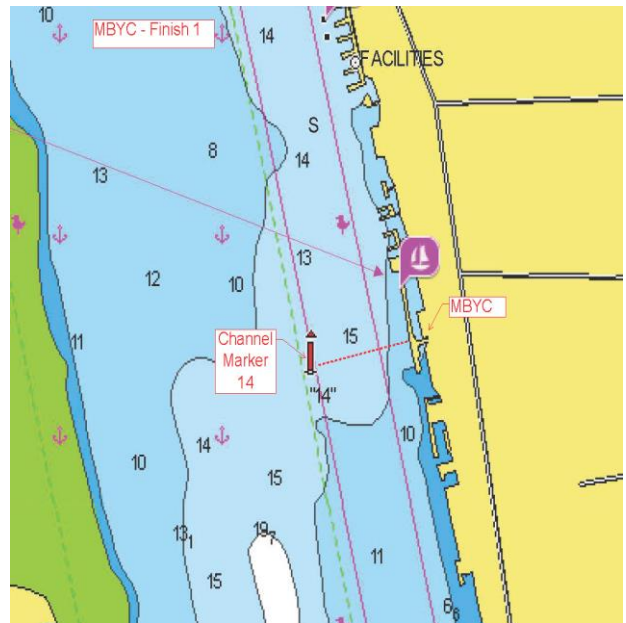


Attachment E.

MBYC-2 (F/S)



MBYC-(F1) Eliminated as of 9/1/22

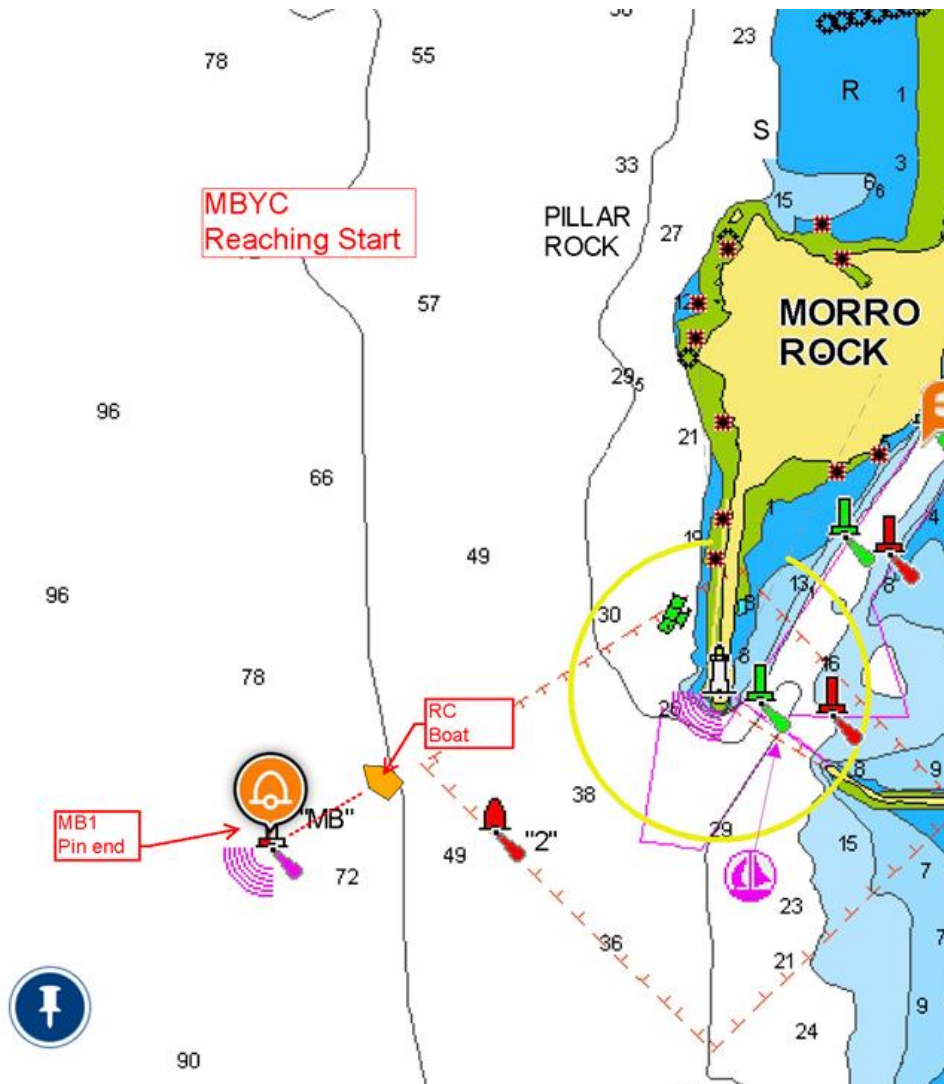




Sailing Instructions – Santa Cruz 27 Nationals 2022



Attachment F.





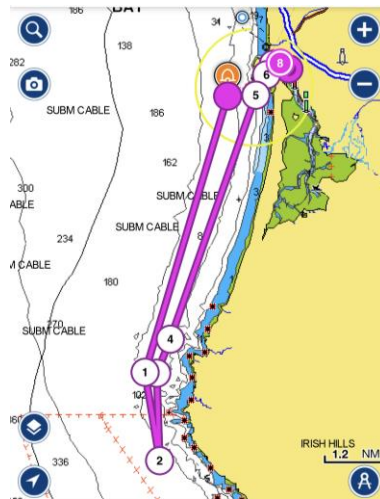
Sailing Instructions – Santa Cruz 27 Nationals 2022

Attachment G.

Course 7, Racing Vicinity



Course 8, Racing Vicinity



Course 9, Racing Vicinity

