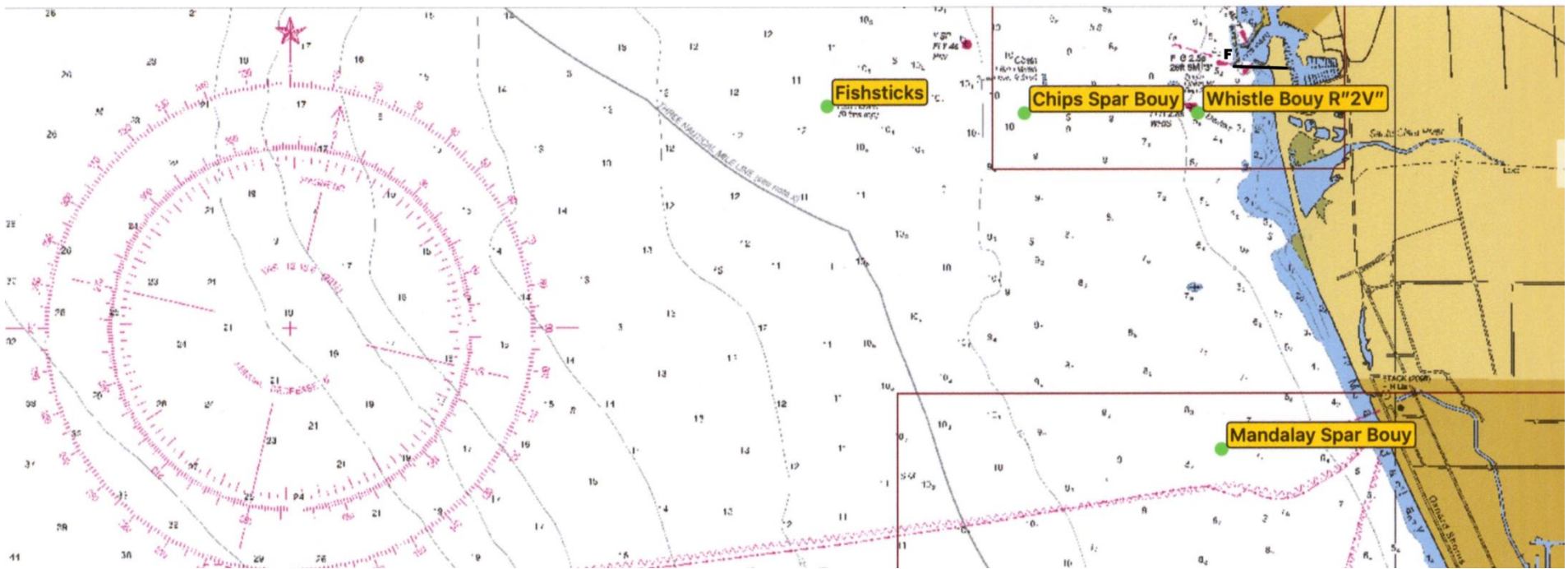




# VYC Wet Wednesday Course Chart

**Not to be used for Navigation**



#	Dist.	Heading	Course Marks
1	5.50	257	S Ap F
2	5.3	161	S Mp R2s F
3	9.22	257	S Ap Mp R2s F
4	9.08	161	S Ms As F
5	Varies	Posted on RC	S Tp R2s F
6	Varies	Posted on RC	S Tp R2p Tp R2s F
7	Varies	Posted on RC	S Ts Cs R2s F
8	8.20	257	S Ap Cp Ap F
9	2.86	252	S Cp F
10	5.39	252	S Cp R2p Cp F
11	7.91	252	S Cp R2p Cp R2p Cp F
12	8.08	257	S Ap R2p Cp F
13	6.87	161	S Ms Cs F
14	7.0	252	S Cp Mp R2s F

MARKS		APPROXIMATE	LOCATION
A	Fish Sticks spar buoy	L: 34° 14.45'N	Lo: 119° 19.85'W
C	Chips spar buoy	L: 34° 14.444'N	Lo: 119° 18.225'W
M	Mandalay spar buoy	L: 34° 11.993'N	Lo: 119° 16.454'W
R2	Vta Whistle buoy R"2V"	L: 34° 14.4'N	Lo: 119° 16.7'W
T	Tetrahedron	Posted on RC	
S	Start in vicinity of Mark R2		
F	Finish near Ventura Harbor Entrance	L: 34 14.745 N	Lo: 119 16.325