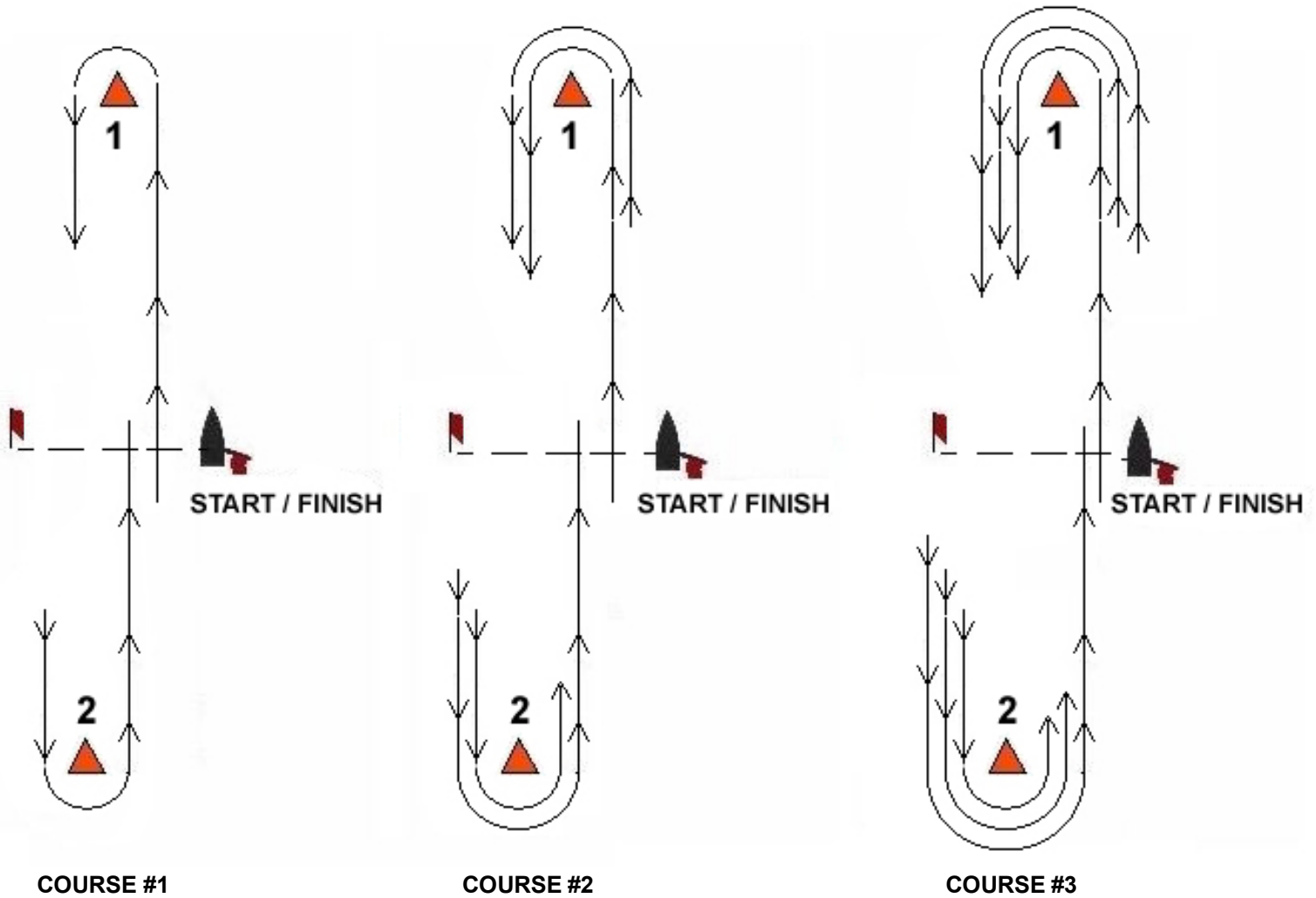




# Dana Point W/L Race Charts



## v 3.0 Chart 'A' Course Diagrams and Descriptions



Windward / Leeward Course Chart 'A'		
No.	Course	Course Distance
1	S, 1, 2, F	2.0 nm
2	S, 1, 2, 1, 2, F	4.0 nm
3	S, 1, 2, 1, 2, 1, 2, F	6.0 nm

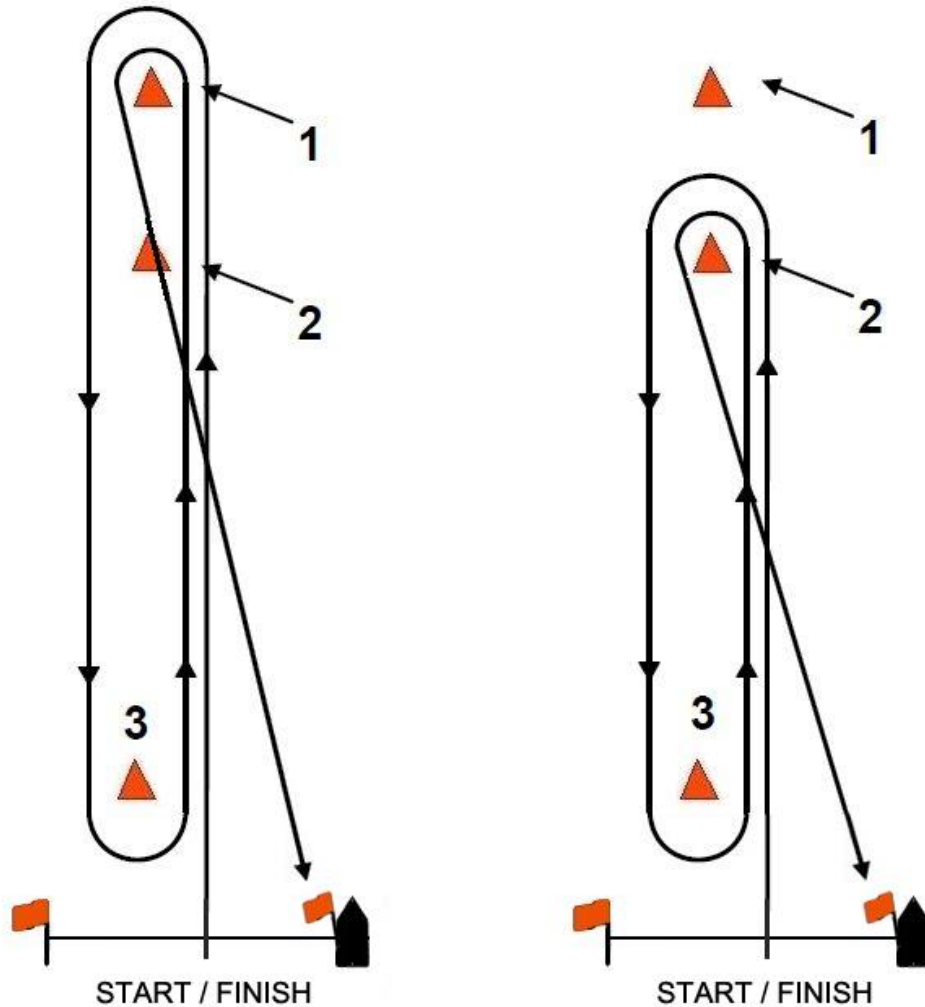
- All marks are to be left to Port.
- Distance from Mark 1 to Mark 2 is approximately 1.0 n.m.
- Approx. bearing from Mark 2 to Mark 1 will be displayed from the RC boat.
- Courses NOT drawn to scale.



# Dana Point W/L Race Charts



## v 3.0 Chart 'B' Long and Short Leg Course Examples



### Windward / Leeward Course Chart 'C'

Course #	Mark Rounding Order (all marks passed to port)	Distance*
1 (2 legs)	Start – 1 – Finish	2.50 N.M.
2 (4 legs)	Start – 1 – 3 – 1 – Finish	4.60 N.M.
3 (6 legs)	Start – 1 – 3 – 1 – 3 – 1 – Finish	6.70 N.M.
4 (4 legs)	Start – 1 – 3 – 2 – Finish	3.60 N.M.
5 (6 legs)	Start – 1 – 3 – 2 – 3 – 2 – Finish	4.70 N.M.
6 (6 legs)	Start – 1 – 3 – 2 – 3 – 1 – Finish	5.70 N.M.
7 (2 legs)	Start – 2 – Finish	1.50 N.M.
8 (4 legs)	Start – 2 – 3 – 2 – Finish	2.60 N.M.
9 (6 legs)	Start – 2 – 3 – 2 – 3 – 2 – Finish	3.70 N.M.

#### \* Distances

Start / Finish to Mark 1 is 1.25 N.M. but may be adjusted.

Start / Finish to Mark 2 is 0.75 N.M. but may be adjusted.

Start / Finish to Mark 3 is 0.20 N.M. but may be adjusted.

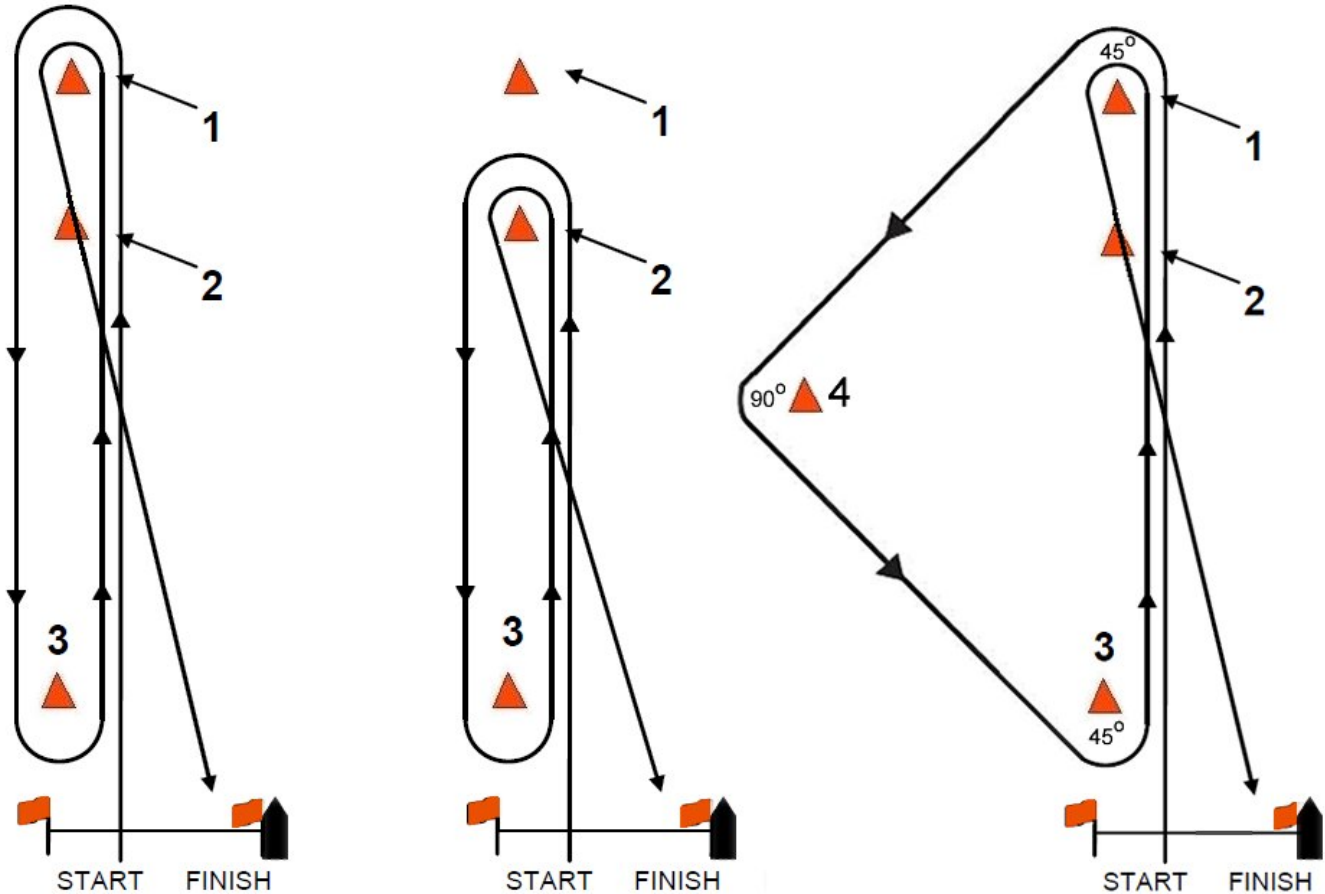
Course Examples NOT drawn to scale



# Dana Point W/L Race Charts



v 3.0 Chart 'C'  
Long, Short and Triangular Leg Course Examples



## Windward / Leeward Course Chart 'D'

Course #	Mark Rounding Order (all marks passed to port)	Distance*
1 (2 legs)	Start – 1 – Finish	2.50 N.M.
2 (4 legs)	Start – 1 – 3 – 1 – Finish	4.60 N.M.
3 (6 legs)	Start – 1 – 3 – 1 – 3 – 1 – Finish	6.70 N.M.
4 (4 legs)	Start – 1 – 3 – 2 – Finish	3.60 N.M.
5 (2 legs)	Start – 2 – Finish	1.50 N.M.
6 (4 legs)	Start – 2 – 3 – 2 – Finish	2.60 N.M.
7 (6 legs)	Start – 2 – 3 – 2 – 3 – 2 – Finish	5.70 N.M.
8 (4 legs)	Start – 1 – 4 – 3 – Finish	2.93 N.M.
9 (5 legs)	Start – 1 – 4 – 3 – 2 – Finish	4.03 N.M.
10 (5 legs)	Start – 1 – 4 – 3 – 1 – Finish	5.03 N.M.

### \* Distances

Start / Finish to Mark 1 is 1.25 N.M. but may be adjusted.

Start / Finish to Mark 2 is 0.75 N.M. but may be adjusted.

Start / Finish to Mark 3 is 0.20 N.M. but may be adjusted.

Mark 4 to Mark 1 and Mark 3 is 0.74 N.M. but may be adjusted.

Course Examples NOT drawn to scale



# Dana Point W/L Race Charts

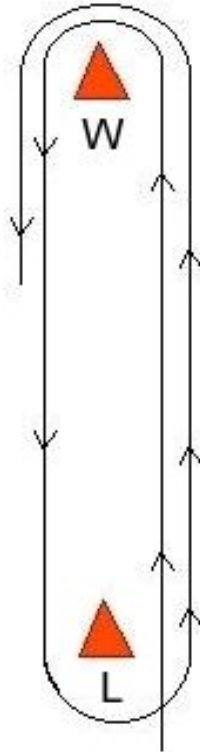


## v 3.0 Chart 'D' Course Diagram & Descriptions



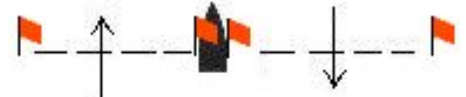
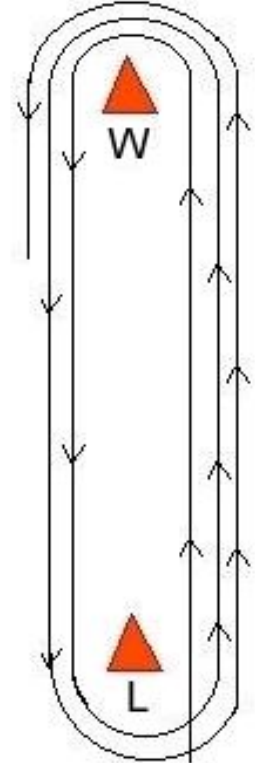
START / FINISH

Course #1



START / FINISH

Course #2



START / FINISH

Course #3

### Windward / Leeward Course Chart 'E'

No.	Course	Distance *
1	S, W, F	2.5 nm
2	S, W, L, W, F	4.5 nm
3	S, W, L, W, L, W, F	6.5 nm

All marks are to be left to Port.

\* Distance from Start to Mark W is approximately 1.25 n.m. but may change.

Approximate bearing to W will be displayed from the Race Committee boat.

Courses NOT drawn to scale.