

## HYC QUANTUM CUP OFFSHORE REGATTA Saturday, May 7, 2022

Organizing Authority: The Houston Yacht Club, Shoreacres, Texas

### SAILING INSTRUCTIONS

The notation '[NP]' in a rule of the Sailing Instructions (SIs) means that a boat may not protest another boat for breaking that rule. This changes RRS 60.1(a).

#### 1. RULES

- 1.1 The regatta will be governed by the rules as defined in *The Racing Rules of Sailing*, except as modified by the NOR or these SIs..

#### 2. SAFETY CONSIDERATIONS

- 2.1 It is critical to the safety and success of HYC Quantum Cup Off-Shore Regatta that boats obey all navigation rules of the road and do not interfere with commercial traffic. In particular:
- 2.1.1 Keep a safe distance between your boat and any ship.
  - 2.1.2 Be aware that a slow moving sailboat can be drawn toward a ship by the ship's wake.
  - 2.1.3 If appropriate to ensure safety, have your engine on, in neutral, when racing near vessels that are not racing, and in particular near commercial shipping traffic.
  - 2.1.4 Many engine failures are caused by clogged fuel filters; to ensure your safety, and the safety of others, be sure your engine has been properly maintained so that it will start on demand.
  - 2.1.5 When racing in or near a ship channel be especially careful to assign a good lookout.
  - 2.1.6 Be prepared to drop or furl sail.
- 2.2 **Radios:** All boats shall have two working VHF radios, one of which can be a handheld. At least one working radio shall be carried in the cockpit at all times. The SER may have additional requirements.
- 2.3 **Rendering Assistance to Persons or Vessels in Danger:** As required by RRS 1.1, a boat or competitor shall give all possible help to any person or vessel in danger. Pursuant to RRS 42.3(g), motoring is allowed during emergency assistance, and will not result in disqualification. In the event a boat renders emergency assistance, or stands by at the scene of an emergency until a determination is made that no assistance is required, or a boat experiences a man overboard, the boat may turn in information regarding the emergency assistance to the Race Committee after finishing. For purposes of the HYC Quantum Cup Off-Shore Regatta, helping "another vessel in danger" includes maneuvering in the Houston Ship Channel to avoid interfering with commercial traffic transiting the area. A boat may use her engine to avoid interfering with any commercial traffic and to clear the passage lane. Once clear from interfering with the commercial traffic, the boat shall immediately cease motoring. A boat shall not advance toward the Finish Line while motoring unless, once clear of traffic and prior to finishing, she returns to her pre-motoring position and completes

the race under sail. Upon receiving a report, the Race Committee may request redress on behalf of the boat(s) involved.

- 2.4 **Redress for Rendering Assistance:** As provided in RRS 62, a boat may be given redress for rendering assistance. For purposes of this rule, “rendering assistance” includes standing by at an emergency scene until it is determined that no assistance is required. RRS 62.1(c) is modified so that a boat may be given redress in the event of giving help in compliance with RRS 1.1, even if help is to herself or her crew. In the event a boat experiences a man overboard, redress will not be refused solely because her score was made worse through her own fault because of losing a crewmember overboard.
- 3. **NO MOTORING:** a boat shall not use her motor for propulsion after her preparatory signal until she *finishes* or retires, except as allowed by the *Rules* or if rendering assistance to persons or vessels or danger pursuant to SI 2.3 above.
  - 3.1 Motoring to render assistance per SI 2.4 may result in redress or a time penalty, if reported. Unreported motoring may result in disqualification or further penalty.
  - 3.2 Notify Race Committee: As soon as practical, a boat that used her motor for any reason shall notify the Race Committee on VHF Channel 72 of the action taken. After finishing, the boat shall report to the Race Committee (1) the times the motor was engaged and disengaged, (2) the reason for the same, (3) the boat's position when the motor was engaged and the boat's position when it was disengaged.
- 4. **CHANGES TO SAILING INSTRUCTIONS**
  - 4.1 Any change to the Sailing Instructions will be posted on the event website before 0800 on the day it will take effect, except that any change to the schedule of races will be posted on the event website by 2000 on the day before it will take effect. As a courtesy, the Race Committee or Regatta Chair will attempt to communicate any changes to the competitors by text message or email at the telephone number and email address provided at the time of registration.
  - 4.2 Oral changes to the sailing instructions may be given on the water by hail on VHF channel 72 in accordance with RRS 90.2(c).
- 5. **COMMUNICATIONS WITH COMPETITORS**
  - 5.1 Notices to Competitors will be posted be online at: [www.regattanetwork.com/event/24372](http://www.regattanetwork.com/event/24372). As a courtesy, the Race Committee or Regatta Chair will attempt to communicate any notices to the competitors by text message or email at the telephone number and email address provided at the time of registration.
- 6. The Race Committee may postpone the race at any time due to weather prior to the scheduled race start and will notify the competitors prior to their warning signal. The Race Committee will broadcast any postponement on VHF Channel 72.
- 7. **SIGNALS MADE ASHORE**
  - 7.1 Signals will be displayed ashore in Galveston and they will have their normal meaning as if being made from a race committee signal boat. The Race Committee will attempt to broadcast the signal flags used on VHF Channel 72.
- 8. **SCHEDULE OF RACES**
  - 8.1 Races will be sailed according to the schedule in the Notice of Race. All times are GPS times.
  - 8.2 Number of Races: 1
  - 8.3 The scheduled time of the first warning signal is 9:00 a.m. for the ORC Spinnaker class and 9:20 a.m. for all other classes. This changes NOR 7.3. The schedule is described below.

Date	Time	Information
Friday, May 6, 2022	7:00 p.m.	Skipper's Meeting and Party at Marina Bar & Grill, Galveston Yacht Basin, 715 N. Holiday Drive, Galveston, Texas 77550 (409) 765-3033.
Saturday, May 7, 2022	9:00 a.m.	Order of Start: <b>9:00 a.m. ORC Spinnaker Class</b> <b>9:20 a.m. PHRF Spinnaker, PHRF Non-Spinnaker and Multihull</b>
Saturday, May 21, 2022	5:00 p.m.	Awards presentation at the HYC Clubhouse.

## 9. CLASS FLAGS

9.1 Class Flags will be:

Class	Flag
ORC Spinnaker Class	Pink
Multihull Class	Yellow
PHRF Spinnaker	Maroon
PHRF Non-Spinnaker	Dark Blue

## 10. RACING AREA

10.1 Attachment 1 shows the location of the racing area.

## 11. THE COURSES

- 11.1 The diagrams in Attachment 2 show the courses, including the approximate angles between legs, the order in which marks are to be passed, and the side on which each mark is to be left.
- 11.2 Courses for each class will be announced by VHF Channel 72 prior to the warning signal. The Race Committee will communicate the intended courses to the competitors at the Skippers' Meeting.

## 12. MARKS

- 12.1 Starting and Finishing Mark will be Galveston Bay Entrance Channel Lighted Buoy 11.
- 12.2 Rounding Mark Locations are listed in Attachment 1 "Offshore Mark Locations".
- 12.3 Available photographs of certain marks are attached to these sailing instructions in Attachment 3.
- 12.4 In the event a mark is missing, boats shall round the GPS coordinates provided.

## 13. OBSTRUCTIONS

Not Applicable.

## 14. THE START

- 14.1 The ORC Spinnaker Class will be started using RRS 26.
- 14.2 PHRF Spinnaker, PHRF Non-Spinnaker and Multihull classes start is staggered, based on the boat PHRF handicap in Attachment 4. This changes RRS 26. Warning signal is the display of the orange line flag.
- 14.3 The Starting Line is a line between Galveston Bay Entrance Channel Lighted Buoy 11 and an orange flag on a staff located on the southern shoreline, approximately 1,100 yards distance, and at a bearing of approximately 205 degrees (Magnetic) from Galveston Bay Entrance Channel Lighted Buoy 11 **CAUTION: Boats are advised to stay well clear of the shoreline to avoid shoal water!**
- 14.4 No later than the warning signal, the Race Committee will announce on VHF Channel 72 the course to be sailed (See Attachment 2).

- 14.5 Boats whose warning signal has not been made shall avoid the starting area during the starting sequence for other boats. A boat shall stay at least 400 feet outside the starting area until her warning signal unless all boats from the preceding start have cleared the starting line.
- 14.6 A boat that does not start within 30 minutes after her starting signal will be scored Did Not Start without a hearing. This changes RRS A4 and A5.
- 14.7 As a courtesy only, the Race Committee may give a 10 second countdown on VHF Channel 72 to the raising and lowering of the signal flags for each class.

## 15. RECALLS

- 15.1 As a courtesy, the Race Committee will attempt to hail boats "On Course Side" (OCS) as soon as possible after the start. The Race Committee intends to use VHF Channel 72 in addition to visual signals.
- 15.2 The failure of electronic equipment, failure to hear a hail, order of hail, or delay in hailing will not be grounds for redress. This modifies RRS 62.1(a).
- 15.3 PHRF Spinnaker, PHRF Non-Spinnaker and Multihull Line start times are GPS time, which governs. All boats will be responsible for determining their exact start time, and no start times will be announced or signaled by the Race Committee. The Race Committee will monitor start times of each boat. OCS boats have the option of returning to the start line and restarting, or shall take the penalty as shown in the table below. The penalty will be assessed at scoring. This changes RRS 29.1 and Appendix A.

0 to 10 sec early	penalty of 30 seconds
10 to 30 sec early	penalty of 1 minute
30 to 1 min early	penalty of 3 minutes
1 min to 2 min	penalty of 10 minutes
More than 2 min	Did Not Start

## 16. THE FINISH

- 16.1 Between the hours of 1600-1900 hours, the finishing line will be a line between Galveston Bay Entrance Channel Lighted Buoy 11 and a staff displaying an orange flag located on the southern shoreline, approximately 1,100 yards distance, and at a bearing of approximately 205 degrees (Magnetic) from Galveston Bay Entrance Channel Lighted Buoy 11. **Caution: Boats are advised to stay well clear of the shoreline to avoid shoal water.**
- 16.2 Boats shall attempt to hail the Race Committee on VHF Channel 72 when passing Galveston Channel Marker 5A, identifying the boat by name and sail number.
- 16.3 Boats shall attempt to hail the Race Committee again on VHF Channel 72 when preparing to cross the finish line, identifying the boat by name and sail number.
- 16.4 The Race Committee intends to be absent on the shoreline after 1900 hours. After 1900 hours boats shall hail the Race Committee on VHF Channel 72 when passing Galveston Bay Entrance Channel Lighted Buoy 11. If the Race Committee is absent or does not acknowledge when a boat finishes, she shall record her finish time as follows: Finish time shall be marked when Galveston Bay Entrance Channel Lighted Buoy 11 is at a compass bearing of 025 degrees (Magnetic) from the vessel's helm. GPS time shall be used. She shall immediately report her finishing time and her position in relation to any nearby boats by contacting the PRO Madonna Breen at 281-382-4789.

## 17. PENALTY SYSTEM

- 17.1 For the PHRF non-spin class, RRS 44.1 is changed so that the One-Turn Penalty replaces the Two-Turns Penalty.

- 17.2 A boat that takes any penalty under RRS 44.2 shall notify the Race Committee at the first reasonable opportunity after finishing, identifying the location, time, and name of any other boat involved in the incident. Racers are reminded of rule 44.1.b.
- 17.3 US SAILING Prescription to the RRS Appendix V Rules V1 and V2 will apply, except as modified by SI 17.4.
- 17.4 US SAILING Prescription to the RRS Appendix V Rule V2 is modified to read: "Provided that rule 44.1(b) does not apply, a boat that may have broken one or more rules of Part 2 or rule 31 in an incident while racing may take a Post-Race Penalty for that incident. A boat takes the penalty by delivering a written notice to the PRO by e-mail at mbreen77346@gmail.com that identifies when and where the incident occurred and identifies any other boat involved in the incident. The penalty shall be a 20% Scoring Penalty, calculated as stated in rule 44.3(c) if taken before the protest time limit expires. Otherwise a 40% Scoring Penalty shall apply, calculated as stated in rule 44.3(c). However, rules 44.1(a) and (b) apply, and the penalty shall not be taken after a protest hearing involving the incident has begun."

## 18. TIME LIMITS AND TARGET TIME

- 18.1 The race shall end at 2100 hours CDT, Saturday 7 May ("Finish Window"), or when the last boat finishes, whichever is earlier. Boats which have not finished at the expiration of the Finish Window time limit will be scored Did Not Finish ("DNF") without a hearing. This changes rules 35, A4, A5.1 and A5.2.

Time Limit	Target Time
1200 Hrs	8-10 Hrs

- Failure to meet the Target Time will not be grounds for redress. This changes RRS 62.1(a).
- 18.2 A boat scored Time Limit Expired shall be scored points for the finishing place two more than the points scored by the last boat that finished within the Finishing Window. This changes RRS 35, A5.1, A5.2 and A10.

## 19. PROTESTS AND REQUESTS FOR REDRESS

- 19.1. **Sportsmanship and the Rules:** In the spirit of sportsmanship, competitors are encouraged to resolve their differences on the water by taking an appropriate penalty or action, which may be to retire, if a boat breaks a *rule*.
- 19.2 **Notification of Intent to Protest:** Boats intending to file a protest shall inform the Race Committee via VHF channel 72 within 10 minutes of that boat's finishing time or by email (mbreen77346@gmail.com) or by text to (281) 382-4789.
- 19.3 **Forms:** A blank Hearing Request Form is posted online at: [www.regattanetwork.com/event/24372](http://www.regattanetwork.com/event/24372). To request a hearing, please send a picture of the form to the Chief Judge by email to (ymares@earthlink.net) or by text to (254) 493-0875.
- 19.4 **Time limits:** The protest time limit for a boat protesting another boat 2 hours after the incident or 2 hours after the protesting boat's *finish*, whichever is later. The time limit for the Race Committee to protest a boat or request redress for a boat is the Wednesday following the race at 11:59 p.m. The time limit for the Protest Committee to protest a boat or call a hearing to consider redress is 24 hours after all hearings are concluded or when it learns that a boat may have broken a *rule* or caused injury or serious damage, whichever is later. Scoring errors should be reported as soon as they are noticed. If the Race Committee refuses to correct an alleged scoring error, the time limit to request redress based on that decision is 2 hours after notice of the refusal is sent to the email address indicated on the entry form. The time limit to request redress based on a Protest Committee

decision is 30 minutes after the decision is posted online at “Notices to Competitors” on [www.regattanetwork.com/event/24372](http://www.regattanetwork.com/event/24372) or the adjusted score is posted, whichever is later. This modifies RRS 60.3, 61.3 and 62.2.

- 19.5 **Notice of Hearings:** Hearing times will be posted online at “Notices To Competitors” on [www.regattanetwork.com/event/24372](http://www.regattanetwork.com/event/24372) as soon as reasonably possible to inform competitors of hearings in which they are parties or named as witnesses and the date and time when the hearings will be held. It is each boat’s obligation to check the “Notices to Competitors” at [www.regattanetwork.com/event/24372](http://www.regattanetwork.com/event/24372) for hearing times and to provide accurate contact information on their entry form and on the Hearing Request Form to include an email address and mobile telephone number where they can be contacted. As a courtesy only, the Protest Committee will attempt to notify any protested boat of the hearing time by telephone or text at the telephone number provided on her entry form. This SI 19.5 satisfies the notice requirements of RRS 63.2.
- 19.6 **Zoom:** Hearings will be by Zoom during the week after the race. A Zoom link will be sent by email to the parties at the email address indicated on their entry form. It is the responsibility of each party to ensure that all technical arrangements and preparation are made to ensure their timely participation in the scheduled Zoom hearing. Each party shall be responsible for providing their own electronic equipment (computer or smartphone) and access to the internet.
- 19.7 **Other Notices:** Notices of protests or requests for redress by the Race Committee or Protest Committee will be posted to inform boats online at “Notices To Competitors” on [www.regattanetwork.com/event/24372](http://www.regattanetwork.com/event/24372) as soon as reasonably possible. This SI 19.7 satisfies the notice requirements of RRS 61.1(b).

## 20. SCORING

- 20.1 The Low-Point Scoring system of Appendix A shall apply.
- 20.2 One race shall be completed to constitute a series.
- 20.3 Boats in ORC Class will be scored using time-on-time (TOT) Triple Number All Purpose (low/medium/high) system. The ORC TOT scoring option will be selected by the race committee after the race, based on actual weather data collected on the course (provided by the Regatta's official weather provider Weather Routing Incorporated (WRI) produced by a live, degreed marine meteorologist, not a mathematical algorithm generated by a free downloadable app.

### ORC Stated Triple Number Wind Ranges

Low	<9 knots
Medium	9-14 knots
High	15+ knots

- 20.4 The decision regarding the ORC parameter selected is not subject to a request for redress. This changes RRS 60.1(b), 62.1(a), and 63.5.
- 20.5 PHRF Spinnaker, PHRF Non-Spinnaker and Multihull boats will be scored using time-on-distance (TOD) scoring.

## 21. SAFETY REGULATIONS

- 21.1 [DP] Check In – Offshore Boats shall check in with the Race Committee on VHF Channel 68 after 0800 on the day the race begins and prior to the warning signal for their class start. Boats checking in shall report the number of individuals on board including the skipper.
- 21.2 Any boat that starts, and then retires or withdraws before finishing the race shall notify the Race Committee at the earliest opportunity on VHF Channel 72, or cell phone of the PRO (phone number: 281-382-4789) or if that is not possible the Chief Judge (phone number 254-493-0875). Failure to do so may result in that boat and skipper not being allowed to enter any future HYC Offshore Regatta.

- 21.3 A boat's failure to check in is not subject to protest by another boat.
- 21.4 If a skipper determines that it is necessary to use the boat's motor to maneuver in order to avoid interfering with a ship's safe passage, he may do so. However, when motoring, the boat may not advance position, and may only use the motoring for clearing the ship passage lane. Once cleared, the boat shall immediately cease motoring. This changes RRS 42. As soon as practical, the skipper shall advise the Race Committee of any action taken in accordance with this rule.

**22. TRASH DISPOSAL**

- 22.1 Trash will be disposed of in accordance with applicable laws.

**23. RADIO COMMUNICATIONS**

- 23.1 The official regatta channel shall be VHF Channel 72.
- 23.2 The Race Committee will also be available by telephone at 281-382-4789 (PRO) and/or 254-493-0875 (Chief Judge).
- 23.3. All boats are encouraged to monitor channel 16 when offshore and to communicate potential hazards to other racers.
- 23.4 All boats are encouraged to monitor VHF channel 13 when near and in the Houston Ship Channel.

**24. PRIZES**

- 34.1 Prizes will be awarded based on the information provided in NOR 18.

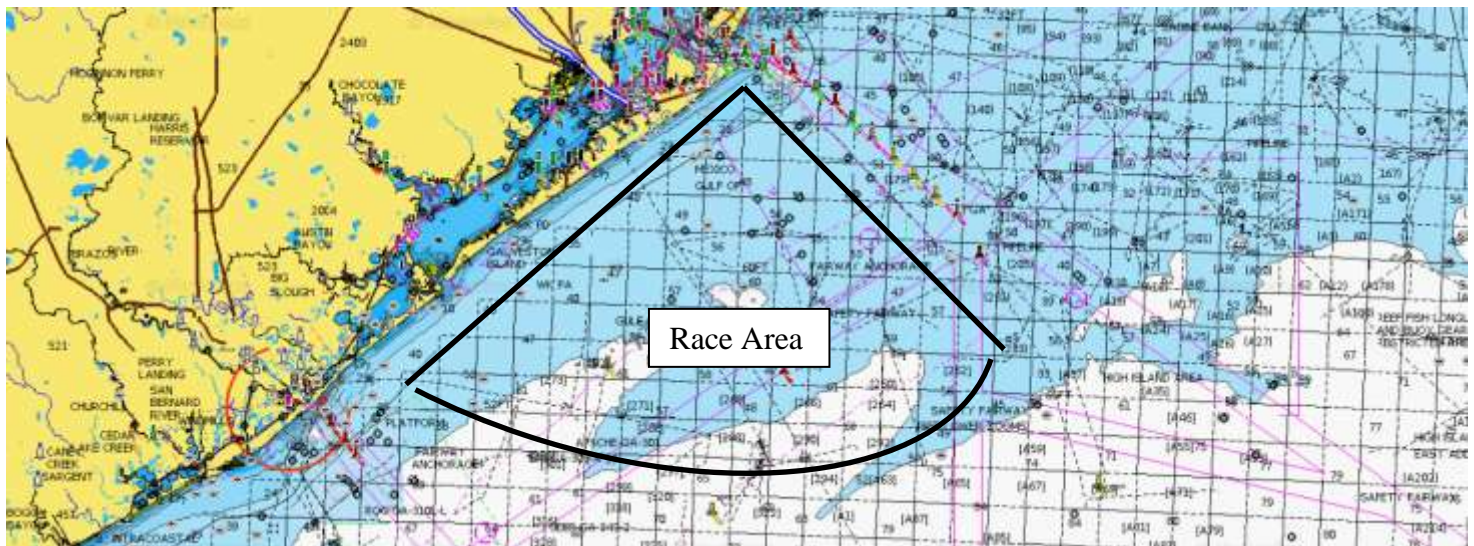
**25. RISK STATEMENT**

- 25.1 See NOR 14.1 and 15.1.

**26. INSURANCE**

- 26.1 See NOR 16.1.

## ATTACHMENT 1 - OFF-SHORE RACING AREA

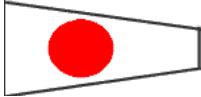



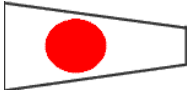



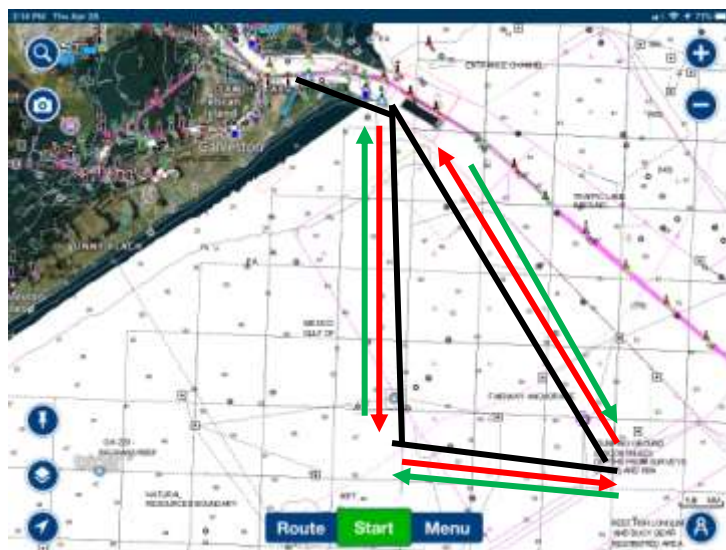
## ATTACHMENT 1 - OFFSHORE MARK LOCATIONS

Designation	Approximate Coordinates		Description
	Latitude	Longitude	
Galveston Bay Entrance Channel Lighted Buoy 11	29° 20.539' N	094° 44.479'W	Galveston Bay Entrance Channel Lighted Buoy 11 (G FL 2.5s)  100 feet outside channel limit.
Galveston South Jetty Light 5A	29° 19.661'N	094° 41.341'W	Galveston South Jetty Light 5A (ISO G 6s 5M RA REF)  Height 30 ft Structure SG on pile
Texas Artificial Fishing Reef Lighted Buoy Fr-Tx-25  Mitchell's Reef	29° 08.574'N	094° 40.835'W	Texas Artificial Fishing Reef Lighted Buoy Fr-Tx-25  Y "FR-TX-25" Fl Y 6s Priv  Marks Old Platforms
Arena Offshore-102-1	29° 7.817'N	094° 32.8'W	RACON Radar Beacon  Information Sign: EXXON-GA-209-A  Height 55 ft Structure on Exxon platform A



## ATTACHMENT 2. OFFSHORE COURSES



<div>Course "1 Red"</div> <div>   </div>				
Leg	Leave To	Bearing	Distance (NM)	Total Distance (NM)
Start (Gal.Bay Chan. Buoy 11)	Port			
Gal. South Jetty Light 5A	Starboard	107	2.88	2.88
Mitchell's Reef Lighted Buoy Fr-Tx-25	Port	177	11.10	13.98
Arena 102-1	Port	096	7.06	21.04
Gal. South Jetty Light 5A	Port	327	14.00	35.04
Finish (Gal. Bay Chan. Buoy 11)	Starboard	287	2.88	37.92

<div>Course "1 Green"</div> <div>   </div>				
Leg	Leave To	Bearing	Distance (NM)	Total Distance (NM)
Start (Gal.Bay Chan. Buoy 11)	Port			
Gal. South Jetty Light 5A	Starboard	107	2.88	2.88
Arena 102-1	Starboard	147	14.0	16.88
Mitchell's Reef Lighted Buoy Fr-Tx-25	Starboard	276	7.06	23.94
Gal. South Jetty Light 5A	Port	357	11.10	35.04
Finish (Gal.Bay Chan. Buoy 11)	Starboard	287	2.88	37.92



## ATTACHMENT 2. OFFSHORE COURSES

<div> <div>Course "2 Red"</div> <div>   </div> </div>				
Leg	Leave To	Bearing	Distance (NM)	Total Distance (NM)
Start (Gal.Bay Chan. Buoy 11)	Port			
Gal. South Jetty Light 5A	Starboard	107	2.88	2.88
Mitchell's Reef Lighted Buoy Fr-Tx-25	Port	177	11.10	13.98
Gal. South Jetty Light 5A	Port	357	11.10	25.08
Finish (Gal.Bay Chan. Buoy 11)	Starboard	287	2.88	27.96

<div> <div>Course "2 Green"</div> <div>   </div> </div>				
Leg	Leave To	Bearing	Distance (NM)	Total Distance (NM)
Start (Gal.Bay Chan. Buoy 11)	Port			
Gal. South Jetty Light 5A	Starboard	107	2.88	2.88
Mitchell's Reef Lighted Buoy Fr-Tx-25	Starboard	177	11.10	13.98
Gal. South Jetty Light 5A	Port	357	11.10	25.08
Finish (Gal.Bay Chan. Buoy 11)	Starboard	287	2.88	27.96



### ATTACHMENT 3. AVAILABLE PHOTOGRAPHIC IMAGES

GA 189 Mitchell's Reef Marker

**Photo not available**

Yellow Buoy with sign:

"FR-TX-25" Flashing Yellow 6 seconds

Marks old platforms

Source:

[https://navcen.uscg.gov/pdf/lightLists/LightList\\_V4\\_2021.pdf](https://navcen.uscg.gov/pdf/lightLists/LightList_V4_2021.pdf)

Arena Offshore-102-1 Production Platform

Information Sign: EXXON-GA-209-A

[https://www.navcen.uscg.gov/pdf/lightLists/LightList\\_V4\\_2020.pdf](https://www.navcen.uscg.gov/pdf/lightLists/LightList_V4_2020.pdf)

Photo Source <https://arenaoffshore.com/offshore-oil-operations/>

