

2022 BEVERLY YACHT CLUB SAILING INSTRUCTIONS

The notation "[DP]" in a rule of the sailing instructions (SIs) means that a penalty for a breach of the rule may, at the discretion of the protest committee, be less than disqualification.

1. RULES

1.1 All BYC races are governed by the rules as defined in *The Racing Rules of Sailing 2021-2024* (RRS).

2. CHANGES TO SAILING INSTRUCTIONS

2.1 Any change to the Sailing Instructions will be posted before 0900 on the day it will take effect, except that any change to the schedule of races will be posted by 2000 on the day before it will take effect. Changes to the Race Calendar must be posted at least 24 hours prior to the first scheduled warning signal of a Series.

2.2 Changes to the sailing instructions may be made on the water by the race committee boat prior to the warning signal after displaying code flag "L" and communicated via a radio announcement.

3. COMMUNICATIONS WITH COMPETITORS

3.1 Notices to competitors will be posted on the official notice board for the series in Regatta Network through the BYC website at www.beverlyyachtclub.org/racing and courtesy copies may be posted on the bulletin board on the BYC porch.

3.2 On the water, the race committee intends to monitor and communicate with competitors on VHF radio CH 72.

3.3 [DP] While racing, except in an emergency, a boat shall not make voice or data transmissions and shall not receive voice or data communication that is not available to all boats.

4. CODE OF CONDUCT

4.1 [DP] Competitors and support persons shall comply with reasonable requests from the race officials.

5. SIGNALS MADE ASHORE

5.1 Signals made ashore will be displayed from the BYC flagpole.

5.2 When flag AP is displayed ashore, '1 minute' is replaced with 'not less than 60 minutes' in Race Signals AP.

6. SCHEDULE OF RACES

6.1 Series	Time of First Warning
Tuesday Twilight Series	1800
Wednesday Twilight Series	1800
Thursday Ladies' Series	1400
Thursday Twilight Series	1800
8/18, 8/25/, 9/1	1730
Saturday Series	1400
8/13	1100
Sunday Series	1400
Sunday Fall Series	1000

7. CLASS SIGNALS AND FLAGS

7.1 Class signals will be displayed on placards before the course designation on the signal boat course board. Handicapped boats shall display their class flag (numeral pennant) from their backstays while racing.

Class	Signal
Handicapped	Numeral pennants
Shields	Shields Insignia
Laser	Laser Insignia
J/24	J/24 Insignia
J/80	J/80 Insignia
Bullseye	BE Insignia
H-12	H-12 Image

8. COURSES

8.1 For courses using the marks described in the Mark List at the bottom of the Race Chart, the course will be designated by displaying placards on the signal boat course board. The rounding and finish marks will be displayed in the order of rounding, after the class designation.

8.2 A green or red placard will be displayed under each rounding mark's placard to designate the side of the boat on which each mark is to be left, starboard (green) or port (red).

8.3 To designate that a "Drop Mark" course will be sailed, code flag "O" will be displayed from the signal boat, and a placard with the letter of the course will be displayed next to the class designation on the course board. The course designation will be followed by placards indicating the number of legs, and optional placards indicating the use of gate, offset, and alternative finish marks. (see diagram)

8.4 The race committee may, but is not obligated to, use VHF CH 72 to announce the course, the intended timing of warning signals, and the sail numbers of recalled racing boats.

9. MARKS

9.1 Marks are described on the attached List of Marks. Permanent marks are either government marks or yellow BYC buoys. When a portable windward mark is used, its approximate distance and bearing from the starting line will be displayed on the course board.

9.2 Except when indicated as rounding marks, all racing boats shall pass to the east of marks "5", "3", and "E" and to the south of marks "F" and "I". All yachts must pass west of the Bully Rock marker.

9.3 Portable marks will be Orange, Yellow, or Red inflatable Tetrahedrons, Cylinders, or Balls.

10. STARTING

10.1 Except for Lasers and Fall Series, races will be started using RRS 26, with classes starting in the order in which their class signals are displayed on the course board.

10.2 Races for Lasers and Fall Series will be started using the Sound Signal Starting System of RRS Appendix U. This changes RRS 26.

10.3 The starting line will be between the staff from which an orange flag is displayed on the signal boat and the course side of the nearby mark.

10.4 Boats whose warning signal has not been made shall avoid the starting area during the starting sequence for other races.

10.5 A boat that does not start within 10 minutes after her starting signal will be scored Did Not Start without a hearing. This changes RRS A5.1 and A5.2.

11. FINISHING

11.1 The finishing line will be between the staff from which a blue flag is displayed on a race committee signal boat and the course side of the mark designated as the finish mark.

11.2 If the race committee is absent when a boat finishes, she shall report her finishing time, and her position in relation to nearby boats, to the race committee at the first reasonable opportunity.

12. PENALTY SYSTEM

12.1 RRS Appendix V will apply in its entirety. This alters RRS 44.1.

12.2 All post-race penalties must be requested before the close of protest time for this race regardless of whether a protest was filed. This changes RRS V2(a).

13. TIME LIMITS

13.1 Time limit for series races for Bullseyes, H-12s, Shields, J24s, J/80s, PHRF, and Lasers is 2 hours.

13.2 For one-design and PHRF races, a boat that finishes later than 30 minutes after the first boat in her class that sails the course and finishes shall be scored Did Not Finish without a hearing. This changes RRS 35, A5.1 and A5.2.

14. HEARING REQUESTS

14.1 Protests and requests for redress shall be written on hearing request forms available in the BYC Protest Box located on the wall to the left of the Clubhouse door on the porch. The form should be completed, photographed and emailed to protest@beverlyyachtclub.org within 2 hours from the time the race committee finish boat returns to BYC (the Protest Time Limit).

14.2 Protest hearings will be held, for properly filed requests, on Sundays at 1700 for Summer Series races conducted during the most recent week ending Thursday. (For example, if you race on Saturday, June 4 or Sunday, June 5, your hearing will be Sunday, June 12.)

14.3 A boat requesting redress based on her scores shall do so within seven days of the posting of the scores. This changes RRS 62.2.

15. SCORING

15.1 The scoring system set out in Appendix A of the Racing Rules of Sailing (RRS) shall be used except as amended by the Notice of Race.

15.2 Course distances for handicapped racing will be compiled using the locations of permanent marks shown on the BYC Race Chart and the GPS locations of portable marks. The length of each leg of the course will be determined by the race committee to the nearest tenth of a nautical mile.

16. SAFETY

16.1 When code flag "L" is displayed on the race committee signal boat before a warning signal, boats shall check in by sailing past the signal boat on starboard tack and hailing their numbers until acknowledged by the race committee.

16.2 Every competing boat, with the exception of dinghies, i.e. Lasers, Optimists and 420's, is required to carry a VHF radio and to monitor VHF radio CH 72 from the preparatory signal and while racing.

16.3 A boat that retires from a race shall notify the race committee at the first reasonable opportunity.

16.4 In accordance with RRS 40.2, RRS 40.1 applies. All competitors shall wear properly fastened USCG-approved flotation devices at all times while racing.

16.5 When code flag "V" is displayed not later than the warning signal or at a rounding mark, spinnakers shall not be used for the balance of the race.

ON-THE-WATER SAFETY AND EMERGENCY RESPONSE:

The obligation to assist a person or boat in danger is the first obligation of all boats and competitors (see RRS 1.1). The safety of participants is the priority; boats and property are secondary.

- The Race Committee will monitor VHF CH 72 and will provide any safety information on VHF CH 72.
- In the event of an emergency on the water, call **COMMODORES** immediately on VHF CH 72.
- COMMODORES Driver** will coordinate the response to a person or boat in danger until the Harbormaster has responded or the situation has been resolved.
- COMMODORES Driver** will report every incident where a person or boat is in danger to the Harbormaster and BYC Base on VHF CH 16, or cell phone if radio hails do not establish communications.
- In emergencies, if the Harbormaster cannot be reached on VHF CH 16, use 911.**
- Where **COMMODORES**, another race committee boat or other boat on-scene can provide immediate assistance, **COMMODORES Driver will designate the boat to respond.**
- Where a person needs emergency medical assistance, **COMMODORES Driver** will consult with the Harbormaster for direction on transfer of the person to Marion Fire/EMS.

COMMON RACE SIGNALS

The meaning of visual and sound signals are stated below. An arrow pointing up or down (↑↓) means that a visual signal is displayed or removed. A dot (•) means a sound; five short dashes (-----) means repetitive sounds; a long dash (—) means a long sound. When a visual signal is displayed over a class flag, the signal applies only to that class.

Postponement Signals



↑•• ↓•

AP (Answer Pennant)

Races not started are postponed. The warning signal will be made 1 minute removal unless at that time the race is postponed again or abandoned.



↑••

AP over H (Hotel)

Races not started are postponed. Further signals ashore.



↑••

AP over A (Alpha)

Races not started are postponed. No more racing today.

Abandonment Signals



↑••• ↓•••

N (November)

All races that have started are abandoned. Return to the starting area. The warning signal will be made 1 minute after removal unless at that time the race is abandoned again or postponed.



↑••

N over H (Hotel)

All races are abandoned. Further signals ashore.

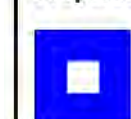


↑••

N over A (Alpha)

All races are abandoned. No more racing today.

Preparatory Signals



↑• ↓•

P (Papa)

Preparatory Signal.



↑• ↓•

I (India)

Rule 30.1 is in effect



↑• ↓•

Z (Zulu)

Rule 30.2 is in effect



↑• ↓•

U (Uniform)

Rule 30.3 is in effect



↑• ↓•

Black Flag

Rule 30.4 is in effect

Recall Signals



↑•

X (Xray)

Individual recall.



↑•• ↓••

First Substitute

General recall. The warning signal will be made 1 minute after removal.

Shortened Course



↑••

S (Sierra)

The course has been shortened. Rule 32.2 is in effect

Other Signals



↑•

L (Lima)

Ashore: A notice to competitors has been posted. Afloat: Come within hail or follow this vessel.



M (Mike)

The object displaying this signal replaces a missing mark.



↑•

Y (Yankee)

Wear a personal flotation device (see rule 40)



(no sound)

O (Oscar)

Drop mark course will be used.



(no sound)

V (Victor)

No spinnakers for the balance of the race.

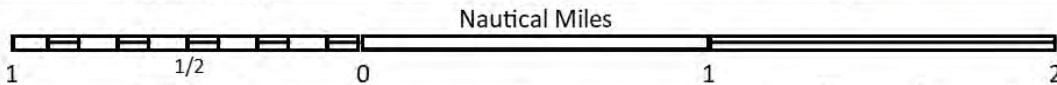
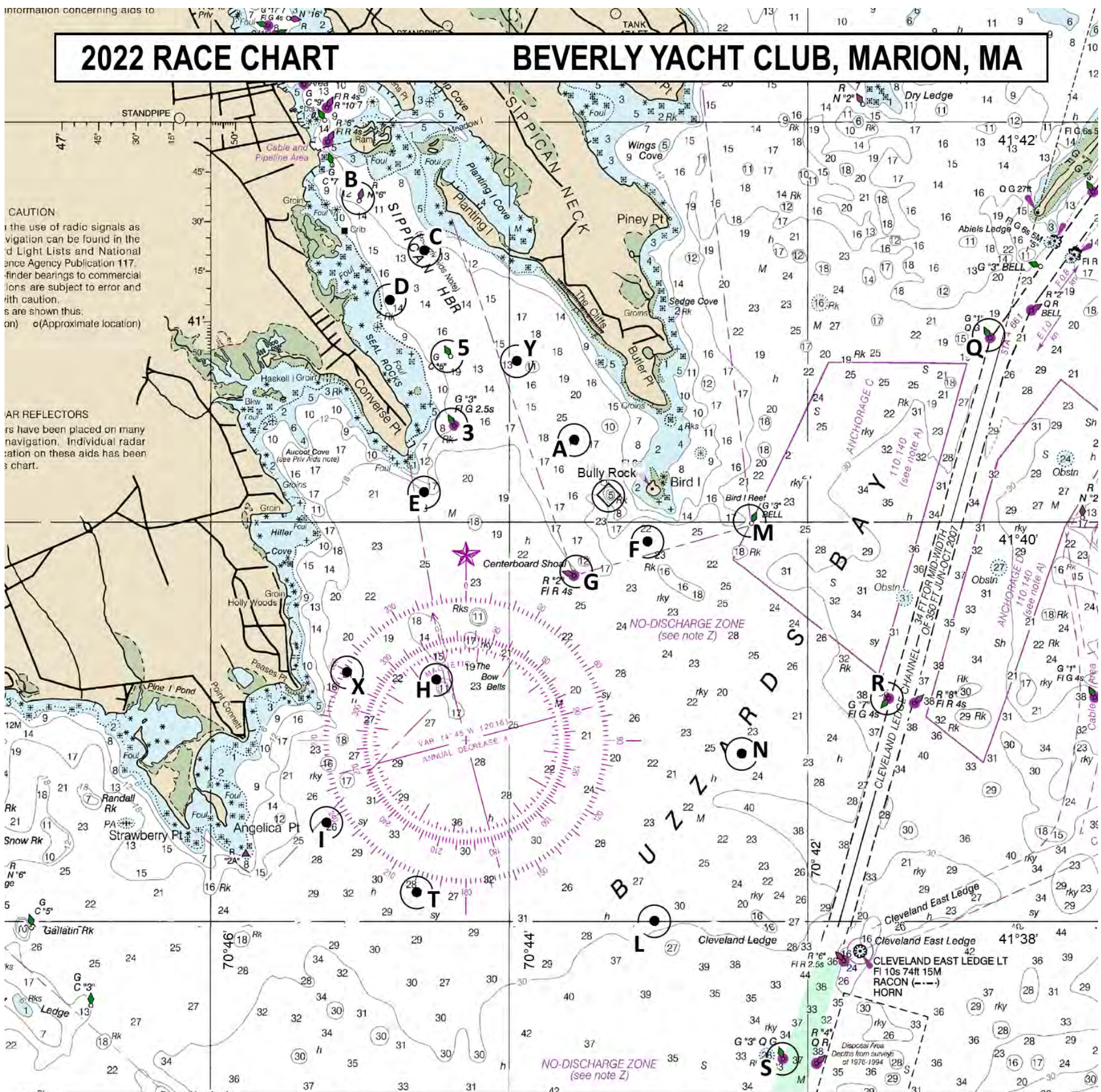
COMMON RACE SIGNALS

Races shall be started using the following signals. Times shall be taken from the visual signals; the absence of a sound signal shall be disregarded. The warning signal for each succeeding class will be made after the starting signal of the preceding class.

Start Sequence	Visual Signal	Sound Signal	Time to Start
Warning	Class Flag(s) Displayed	1 Sound	5 Minutes
Preparatory ↑	Preparatory Flag(s) Displayed P or I or Z or U or Z or Black	1 Sound	4 Minutes
Preparatory ↓	Preparatory Flag(s) Removed	1 Long Sound	1 Minute
Start	Class Flag(s) Removed - Time to Start	1 Sound	Start

2022 RACE CHART

BEVERLY YACHT CLUB, MARION, MA



THIS CHART IS NOT TO BE USED FOR NAVIGATIONAL PURPOSES.

Except when indicated as turning marks, all yachts must pass east of marks "3", "5", and "E", and to the south of marks "F" and "I". All yachts must pass west of the Bully Rock marker.

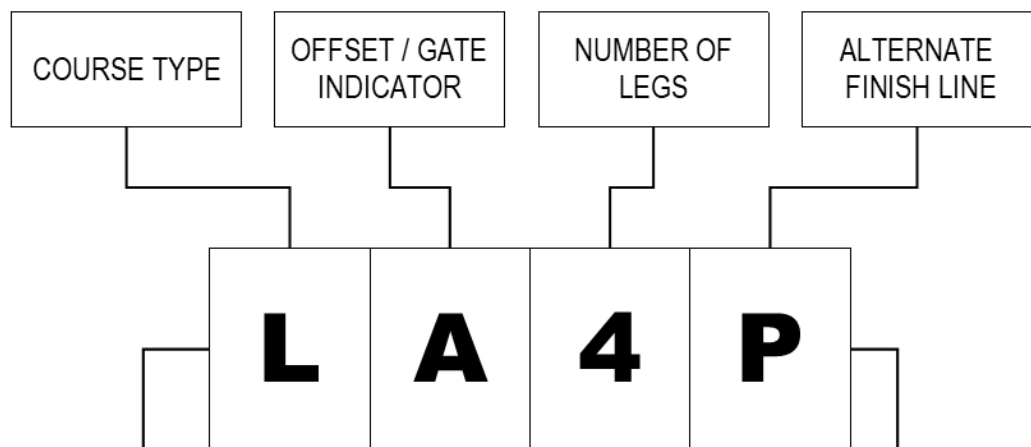
- - USCG Aid To Navigation
- - BYC Private Mark
- ⊙ - BYC Private Rock Marker

MARK	DESCRIPTION
3	Sippican Harbor Lighted Green Buoy "3" (FI G 2.5s) East of Converse Point
5	Sippican Harbor Green Can "5" East of Seal Rocks
8	Weepecket Rock Lighted Red Gong "8" (FI R 2.5s) (off chart)
A	BYC Yellow Can "A" West of Butler Point
B	Sippican Harbor Red Nun "6" South of Ram Island
C	BYC Yellow Can "C" West of Planting Island
D	BYC Yellow Can "D" Northeast of Seal Rocks
E	BYC Yellow Can "E" Southeast of Converse Point
F	BYC Yellow Can "F" South of Bird Island
G	Sippican Harbor Lighted Red Buoy "2" (FI R 4s) at Centerboard Shoal Southwest of Bird Island
H	BYC Yellow Can "H" at The Bow Bells East of Point Connett
I	BYC Yellow Can "I" East of Angelica Point
J	Portable Turning Mark to Leeward of Start / Finish Line
K	West Island Red Bell "2SE" (off chart)
L	BYC Yellow Can "L" West of Cleveland Ledge Light
M	Bird Island Green Bell "3" Southeast of Bird Island
N	BYC Yellow Can "N" Southeast of Bird Island

MARK	DESCRIPTION
O	Portable Offset Turning Mark near Windward Turning Mark
P	Portable Alternate Finish Line Pin directly on the opposite side of start boat from starting line pin
Q	Hog Island Channel lighted Green Buoy "4" (Q FI G) Southwest of Abiels Ledge
R	Cleveland Ledge Channel Lighted Green Gong "7" (FI G 4s) Northeast of Cleveland Light
S	Cleveland Ledge Channel Lighted Green Buoy "3" (Q FI G) Southwest of Cleveland Light
T	BYC Yellow Can "T" Southeast of Angelica Point
U	Portable Pin end of Start / Finish Line to Port of Signal Boat
V	Portable Turning Mark a Short Distance to Windward of Start / Finish
W	Portable Windward Turning Mark at Bearing and Distance Posted on signal boat
X	BYC Yellow Can "X" East of Peases Point
Y	BYC Yellow Can "Y" Southwest of The Cliffs
Z	Buzzards Bay Lighted Red Gong "10" (FI R) Southeast of West Island (off chart)

DESCRIPTION OF DROP MARK COURSES

When drop mark courses are used, Signal Boat will display code flag "O".



L - Windward / Leeward Course.

I - Windward / Leeward Course with Start / Finish Line located in the middle.

TW - Triangle Course.

"A" Placard designates that Offset / Gate Marks **MAY** be used.

"P" Placard placed at the end of a posted course designates that alternative finish pin "P" will be used. It will be located directly on the opposite side of the start boat from the starting line pin.

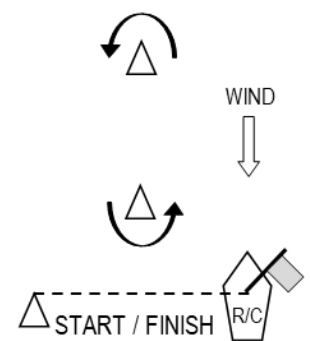
NOTE: All subsequent legs following the third leg of a "TW" course will be Windward / Leeward legs.

NOTE: In the absence of Placard "A", Offset / Gate Marks will **NOT** be used.

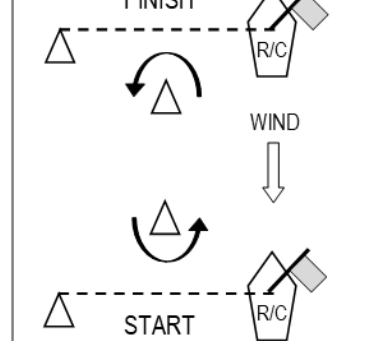
NOTE: The Finish Line will be between the Blue Flag on the Start / Finish Boat and Mark "P".

DROP MARK COURSE DIAGRAMS

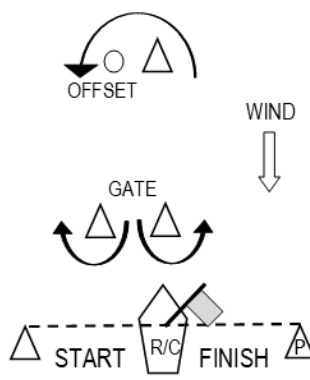
COURSE "L_" WITH EVEN NUMBER OF LEGS.



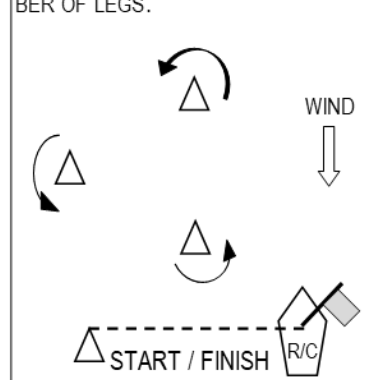
COURSE "L_" WITH ODD NUMBER OF LEGS.



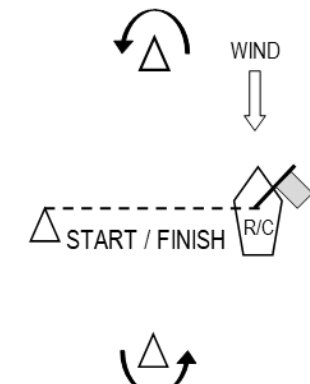
COURSE "LA_P"



COURSE "TW_" WITH ODD NUMBER OF LEGS.



COURSE "L_"



COURSE "IA_"

