

Beverly Yacht Club
Sou'Wester Pursuit Race
Monday, September 5, 2022
SAILING INSTRUCTIONS

The Notation '[DP]' means that the penalty for a breach of that rule may, at the discretion of the protest committee, be less than disqualification.

1. RULES

- 1.1.** The event is governed by the rules defined in The Racing Rules of Sailing (RRS), except as changed by the Notice of Race or by these Sailing Instructions.

2. CHANGES TO SAILING INSTRUCTIONS

- 2.1.** Any changes to the sailing instructions or schedule will be posted, at least 24 hours prior to the first scheduled warning signal, on the Official Notice Board located at [Regatta Network](#) and courtesy copies may be posted on the bulletin board on the BYC porch.
- 2.2.** Changes to the sailing instructions may be made on the water by the race committee on the boat prior to the warning signal and after displaying signal flag "L" and a radio announcement by the race committee on VHF CH 72.

3. COMMUNICATIONS WITH COMPETITORS

- 3.1.** Notices to competitors will be posted on the Official Notice Board located at [Regatta Network](#) and courtesy copies may be posted on the bulletin board on the BYC porch.
- 3.2.** Scratch sheets including start times will be available through the registrant's email and at the Beverly Yacht Club Bar, no later than 0900 on the day of the race.
- 3.3.** On the water, the race committee intends to monitor and communicate with competitors on VHF CH 72.
- 3.4.** [DP] While racing, except in an emergency, a boat shall not make voice or data transmissions and shall not receive voice or data communication that is not available to all boats.

4. CODE OF CONDUCT

- 4.1.** [DP]Competitors and support persons shall comply with reasonable requests from the race officials.

5. SIGNALS MADE ASHORE

- 5.1.** Signals made ashore will be displayed from the BYC flagpole.
- 5.2.** When flag AP is displayed ashore, '1 minute' is replaced with 'not less than 60 minutes' in Race Signals AP.

6. SCHEDULE OF RACE

- 6.1.** The scheduled time of the first warning signal is 1155.

7. RACING AREA

- 7.1.** The racing area is outer Sippican Harbor and Buzzards Bay.

8. COURSES

- 8.1.** The selected course will be displayed on the course board on the race committee boat prior to the first warning signal.

9. MARKS

- 9.1.** Marks are described on the attached List of Marks. Permanent marks are either government marks or yellow BYC buoys. When a portable windward mark is used, its approximate distance and bearing from the starting line will be displayed on the course board.
- 9.2.** Except when indicated as rounding marks, all racing boats shall pass to the east of marks "5", "3", and "E" and to the south of marks "F" and "I". All yachts must pass west of the Bully Rock marker.
- 9.3.** Portable marks will be Orange, Yellow, or Red inflatable Tetrahedrons, Cylinders, or Balls.

10. START AND RECALLS

- 10.1.** The start will be in the vicinity of Sippican Harbor Lighted Red Buoy "2" (Fl R) at Centerboard Shoal (BYC mark "G").
 - 10.1.1.** Boats will be allocated a start from 11:55:00 relative to their handicap and those times will be listed on the scratch sheet.
 - 10.1.2.** The first boat(s) to start will be allocated 1200 and will start in accordance with RRS 26.
 - 10.1.3.** For subsequent boats, their preparatory signal and their one-minute signal shall be deemed to have been made at four minutes and at one minute respectively before their nominal starting time. Their starting signal will be the start time announced with a single sound. This changes RRS26.
 - 10.1.4.** A boat that does not start within 10 minutes after her starting signal will be scored Did Not Start without a hearing. This changes RRS A5.1 and A5.2.
 - 10.1.5.** Boats whose warning signal has not been made shall avoid the starting area during the starting sequence for other boats.

10.2. POSTPONING PURSUIT RACES

- 10.2.1.** Postponement of pursuit races shall be in accordance with RRS 27.3.
- 10.2.2.** In the event of postponement, the starting minutes allocated will remain the same. Yachts will start at their allocated number of minutes after the rescheduled start time. The start sheet will not be reprinted. Yachts will be advised of the rescheduled start time via VHF CH 72.

10.3. INDIVIDUAL RECALLS

- 10.3.1** Boats starting early by one minute or more shall have that amount of time, which they would otherwise have saved, added to their elapsed time and then a further 10% time penalty added. No recall signal shall be made. This changes RRS 29.1.
- 10.3.2** Boats starting early by less than one minute: The race committee shall promptly display code flag 'X' accompanied by one sound signal. The flag will be displayed for a period of 30 seconds or until all such boats have completely returned to the prestart side of the line by rounding one of the ends, whichever is earlier. A 10% elapsed time penalty shall apply to boats that fail to start correctly. This changes RRS 29.1.

11. GENERAL RECALLS

- 11.1.** There shall be no general recalls. This changes RRS 29.2

12. FINISHING

- 12.1.** The finish line will be between the staff from which a blue flag is displayed on the finish boat and the course side of the nearby mark.
- 12.2.** If the Race Committee is absent when a boat finishes, she shall report her finishing time, and

her position in relation to nearby boats, to the Race Committee at the first reasonable opportunity.

13. PENALTIES

- 13.1.** RRS Appendix V will apply in its entirety. This alters RRS 44.1
- 13.2.** All post-race penalties must be taken before the protest time limit regardless of whether a protest was filed. This changes RRS V2(a).

14. TIME LIMITS

- 14.1.** The Sou'wester Pursuit Race has a time limit of five (5) hours.

15. PROTESTS AND REQUESTS FOR REDRESS

- 15.1.** Protests and requests for redress shall be written on hearing request forms available in the BYC Protest Box located on the wall to the left of the Clubhouse door on the porch. The form should be completed, photographed, and emailed to protest@beverlyyachtclub.org within two hours from the time the race committee finish boat returns to BYC.
- 15.2.** Hearings will be scheduled and posted on the Notice Board on Monday, September 5 after the protest time elapses.
- 15.3.** A boat requesting redress based on her score shall do so by 1700 on September 5, 2022. This changes RRS 62.2.

16. SCORING

- 16.1.** Boats will be scored according to RRS Appendix A.
- 16.2.** RRS A5.2, Scoring, is amended to allow for the following scoring:
 - DNC, DNS, DNF, NSC = Starters + 1
 - OCS = Starters +1
 - RET = Starters + 2
 - DSQ = Starters +2
- 16.3.** Scores will be posted on the Sou'wester Pursuit Race site on [Regatta Network](#).

17. SAFETY

- 17.1.** When Code Flag "L" is displayed on the race committee signal boat before a warning signal, boats shall check in by sailing past the signal boat on starboard tack and hailing their numbers until acknowledged by the race committee.
- 17.2.** Every competing boat is required to carry a VHF radio and monitor VHF radio CH 72 from the preparatory signal and while racing.
- 17.3.** A boat that retires shall notify the race committee, or by calling the BYC (508-748-0540), at the first reasonable opportunity.
- 17.4.** All competitors shall wear properly fastened, USCG approved personal flotation devices at all times when on deck. This changes RRS 40.1.
- 17.5.** When code flag "V" is displayed not later than the warning signal, spinnakers shall not be used.

18. RISK STATEMENT

- 18.1.** RRS 3 states: 'The responsibility for a boat's decision to participate in a race or to continue to race is hers alone.' By participating in this event each competitor agrees and acknowledges that sailing is a potentially dangerous activity with inherent risks. These risks include strong winds and rough seas, sudden changes in weather, failure of equipment, boat handling errors,

poor seamanship by other boats, loss of balance on an unstable platform and fatigue resulting in increased risk of injury. Inherent in the sport of sailing is the risk of permanent, catastrophic injury or death by drowning, trauma, hypothermia, or other causes. The Organizing Authority will not accept any liability for material damage or personal injury, or death sustained in conjunction with, or prior to, during, or after racing.

19. ADDITIONAL INFORMATION

19.1. Competitors may contact the following individuals for additional information:

Event Chair: Twice Tougas - twicetougas@hotmail.com

PHRF Chairs: Ed Dailey - dailey@raptor205.com and Barry Steinberg – bmjb@comcast.net

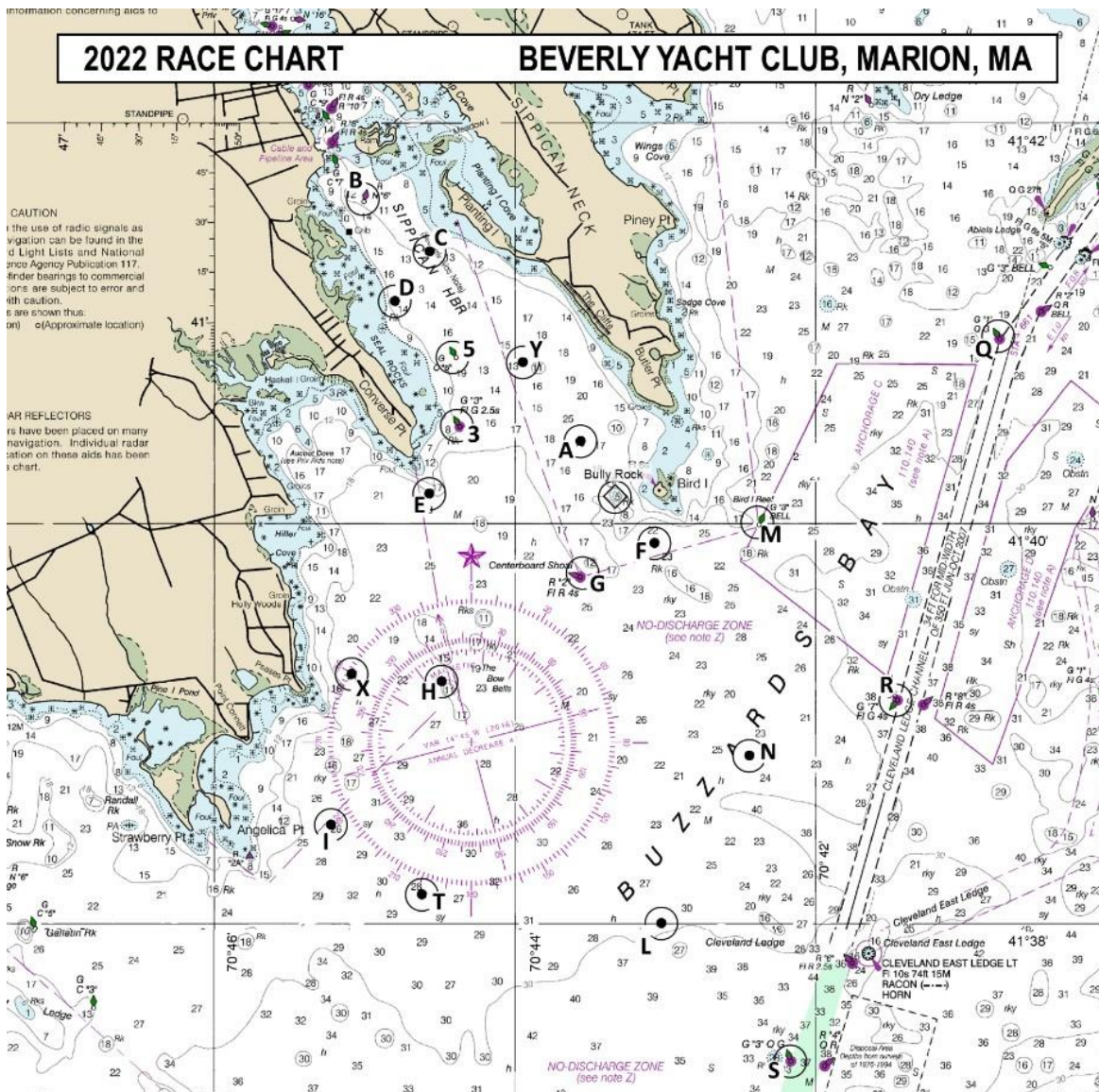
J/80 Fleet Representative: Peter Quandt - pquandt@comcast.net

Shields Fleet Representative: Ken Deyett - unlimitedvisions.nh@gmail.com

BYC Race Committee Chair: Tracy McNeil at tltmcneil@verizon.net

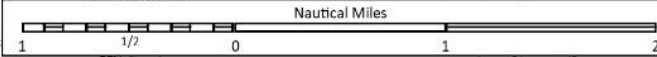
2022 RACE CHART

BEVERLY YACHT CLUB, MARION, MA



CAUTION
The use of radio signals as aids to navigation can be found in the Light Lists and National Oceanic and Atmospheric Administration Publication 117. Finder bearings to commercial lights are subject to error and should be used with caution. Bearings are shown thus: (M) (Approximate location)

RADAR REFLECTORS
Radar reflectors have been placed on many navigational aids. Individual radar return characteristics for these aids has been noted on this chart.



THIS CHART IS NOT TO BE USED FOR NAVIGATIONAL PURPOSES.

Except when indicated as turning marks, all yachts must pass east of marks "3", "5", and "E", and to the south of marks "F" and "I". All yachts must pass west of the Bully Rock marker.

- - USCG Aid To Navigation
- - BYC Private Mark
- ⊙ - BYC Private Rock Marker

MARK	DESCRIPTION
3	Sippican Harbor Lighted Green Buoy "3" (FI G 2.5s) East of Converse Point
5	Sippican Harbor Green Can "5" East of Seal Rocks
8	Weepecket Rock Lighted Red Gong "8" (FI R 2.5s) (off chart)
A	BYC Yellow Can "A" West of Butler Point
B	Sippican Harbor Red Nun "6" South of Ram Island
C	BYC Yellow Can "C" West of Planting Island
D	BYC Yellow Can "D" Northeast of Seal Rocks
E	BYC Yellow Can "E" Southeast of Converse Point
F	BYC Yellow Can "F" South of Bird Island
G	Sippican Harbor Lighted Red Buoy "2" (FI R 4s) at Centerboard Shoal Southwest of Bird Island
H	BYC Yellow Can "H" at The Bow Bells East of Point Connett
I	BYC Yellow Can "I" East of Angelica Point
J	Portable Turning Mark to Leeward of Start / Finish Line
K	West Island Red Bell "2SE" (off chart)
L	BYC Yellow Can "L" West of Cleveland Ledge Light
M	Bird Island Green Bell "3" Southeast of Bird Island
N	BYC Yellow Can "N" Southeast of Bird Island

MARK	DESCRIPTION
O	Portable Offset Turning Mark near Windward Turning Mark
P	Portable Alternate Finish Line Pin directly on the opposite side of start boat from starting line pin
Q	Hog Island Channel lighted Green Buoy "1" (Q FI G) Southwest of Abiels Ledge
R	Cleveland Ledge Channel Lighted Green Gong "7" (FI G 4s) Northeast of Cleveland Light
S	Cleveland Ledge Channel Lighted Green Buoy "3" (Q FI G) Southwest of Cleveland Light
T	BYC Yellow Can "T" Southeast of Angelica Point
U	Portable Pin end of Start / Finish Line to Port of Signal Boat
V	Portable Turning Mark a Short Distance to Windward of Start / Finish
W	Portable Windward Turning Mark at Bearing and Distance Posted on signal boat
X	BYC Yellow Can "X" East of Peases Point
Y	BYC Yellow Can "Y" Southwest of The Cliffs
Z	Buzzards Bay Lighted Red Gong "10" (FI R) Southeast of West Island (off chart)