



## 2022 HURRICANE CUP RACES

Saturday, September 24, 2022

Hurricane Cup Pursuit Race

Hurricane Cup One-Design Races

Marion, Massachusetts 02738

The Organizing Authority is the Beverly Yacht Club (BYC)

### NOTICE OF RACE

The Notation '[DP]' means that the penalty for a breach of that rule may, at the discretion of the protest committee, be less than disqualification.

#### 1. RULES

- 1.1. The race is governed by the rules as defined in the *Racing Rules of Sailing* (RRS).
- 1.2. [DP] Competitors and support persons shall comply with reasonable requests from the race officials.
- 1.3. All competitors are reminded about the importance of compliance with RRS 2, Fair Sailing, RRS 4, Acceptance of the Rules, and RRS 67, Damages, in any BYC racing event.
- 1.4. In accordance with RRS 40.2, Rule 40.1 applies: All competitors shall wear properly fastened, USCG-approved personal flotation devices at all times while racing.
- 1.5. For PHRF boats, RRS 52 is amended as provided for under RRS 86.1(b) as follows: Competitors are permitted to use electrically powered winches for running rigging while racing.

#### 2. SAILING INSTRUCTIONS

- 2.1. Sailing Instructions will be available by Friday, September 16, 2022. Printed copies will be available from the BYC Office upon request.
  - 2.1.1. One-design race sailing instructions will be posted at <https://www.regattanetwork.com/event/24403>
  - 2.1.2. Pursuit race sailing instructions will be posted at <https://www.regattanetwork.com/event/24402>

#### 3. COMMUNICATION

- 3.1. Notices to competitors will be posted on the official notice board for the races in Regatta Network and courtesy copies may be posted on the bulletin board on the porch at the Beverly Yacht Club.
  - 3.1.1. One-design race notices will be posted at <https://www.regattanetwork.com/event/24403>
  - 3.1.2. Pursuit race notices will be posted at <https://www.regattanetwork.com/event/24402>
- 3.2. All boats shall carry a VHF radio capable of communicating on VHF radio CH 72.
- 3.3. [DP] While racing, from the first warning signal until the last boat finishes, except in an emergency, a boat shall not make or receive voice or data transmissions that are not available to all boats.

#### **4. ELIGIBILITY AND ENTRY**

- 4.1. This race is open to all sailboats. A current New England Multihull Association certificate is required for multi-hulls. New or renewal NEMA certificates can be acquired from NEMA at <https://www.nemasail.org/>. A current, valid PHRFNE certificate is required for all PHRF sailboats. New or renewal PHRF certificates can be acquired from PHRF New England at [www.phrfne.org](http://www.phrfne.org). Yachts with other rating certificates may apply to the Beverly Yacht Club PHRF representative for an unofficial rating. A yacht or class fleet with a provisional certificate or unofficial rating must submit to the Event Chair a request in writing for permission to participate in the Pursuit Race. A preliminary list of accepted One Design Class PHRF NE Base Ratings exists for many boats including for example Shields, J/22s, J/24s, J/70s, and J/80s. The Race Committee, at its sole discretion, may or may not allow a yacht/class with a provisional certificate or unofficial rating to participate in the race. Bullseyes and H12s are eligible for the one-design race.
- 4.2. Eligible Bullseyes and H12s may enter by completing the entry form online in Regatta Network at <https://www.regattanetwork.com/event/24403> by 0900 on the day of the race, Saturday, September 24, 2022.
- 4.3. Eligible pursuit/handicap boats may enter by completing the entry form online in Regatta Network at <https://www.regattanetwork.com/event/24402> by 0900 on Thursday, September 22, 2022.
- 4.4. A complete crew list, including name, emergency contact name and telephone number is required to complete the registration process for handicap boats.
- 4.5. There is a minimum registration requirement of three sailboats for each racing class.
- 4.6. At its sole discretion, the OA may divide the registrants into multiple divisions. It is the OA's intent to have one Racing (Spinnaker) class and at least one Cruising (Non-spinnaker) class, and if applicable, a multihull class for the Pursuit Race.

#### **5. FEES**

- 5.1. Non-BYC sailboats will pay an entry fee of \$65 per series at the time of registration.

#### **6. SCHEDULE**

- 6.1. The first warning signal for the Pursuit Race will be at 1155.
  - 6.1.1. Scratch sheets for the Pursuit Race will be made available at 0900 at the Beverly Yacht Club Bar and through each registrant's email on the day of the event.
- 6.2. The first warning signal for the One-Design Races will be at 1330.

#### **7. INSPECTION/MEASUREMENT**

- 7.1. Sailboats competing are subject to inspection and/or measurement by the Event Chair, Principal Race Officer, or Race Committee Chair at any time. A boat may be excluded from racing for failure to meet safety requirements or failure to comply with its racing handicap certificate or class rules. The Race Committee, at its sole discretion, may or may not allow a sailboat to participate in a race.

#### **8. VENUE**

- 8.1. Racing will take place in outer Sippican Harbor and Buzzards Bay as shown in NOR Addendum A.

#### **9. COURSES**

- 9.1. The courses will be as described on the scratch sheet for the Pursuit Race and displayed on the committee boat for both races.

#### **10. PENALTIES**

- 10.1. RRS Appendix V will apply in its entirety. This alters RRS 44.1.

10.2. All post-race penalties must be taken before the protest time limit regardless of whether a protest was filed. This changes RRS V2(a).

## **11. PRIZES**

- 11.1. Prizes will be awarded at Cups and Flags at BYC on October 1, 2022, at 1800.
- 11.2. The PHRF Hurricane Cup Pursuit Race is a part of the Buzzards Bay Trophy, joint effort between the Bay clubs, that consists of 8 races, where 4 are mandatory to qualify.

## **12. MEDIA**

- 12.1. Competitors give absolute right and permission for any photograph and video footage taken of themselves or the boat they are sailing during the event to be published in BYC publications and/or on its website and social media pages.

## **13. RISK STATEMENT AND DISCLAIMER OF LIABILITY**

- 13.1. RRS 3 states: "The responsibility for a boat's decision to participate in a race or to continue to race is hers alone." By participating in this event, each competitor agrees and acknowledges that sailing is a potentially dangerous activity with inherent risks. These risks include strong winds and rough seas, sudden change in weather, failure of equipment, boat handling errors, poor seamanship by other boats, loss of balance on an unstable platform and fatigue resulting in increased risk of injury. Inherent in the sport of sailing is the risk of permanent, catastrophic injury or death by drowning, trauma, hypothermia, or other causes. The Organizing Authority will not accept any liability for material damage or personal injury, or death sustained in conjunction with, or prior to, during, or after racing.

## **14. ADDITIONAL INFORMATION**

- 14.1. Competitors may contact the following individuals for additional information:

BYC Event Chair: Katie Hall Young – [katie\\_hall@hotmail.com](mailto:katie_hall@hotmail.com)

PHRF Fleet Representatives:

Ed Dailey – [dailey@raptor205.com](mailto:dailey@raptor205.com) and Barry Steinberg – [bmjb@comcast.net](mailto:bmjb@comcast.net)

Bullseye Fleet Representatives:

Heather Parsons - [heatherorknot@gmail.com](mailto:heatherorknot@gmail.com), Chris Verni - [christopher.verni@gmail.com](mailto:christopher.verni@gmail.com)

H-12 Fleet Representatives:

Ellen Bowler - [bowler.ellen@gmail.com](mailto:bowler.ellen@gmail.com), Anne Converse - [anne@annetconverse.com](mailto:anne@annetconverse.com)

J/80 Fleet Representative: Peter Quandt - [pquandt@comcast.net](mailto:pquandt@comcast.net)

Shields Fleet Representative: Ken Deyett - [unlimitedvisions.nh@gmail.com](mailto:unlimitedvisions.nh@gmail.com)

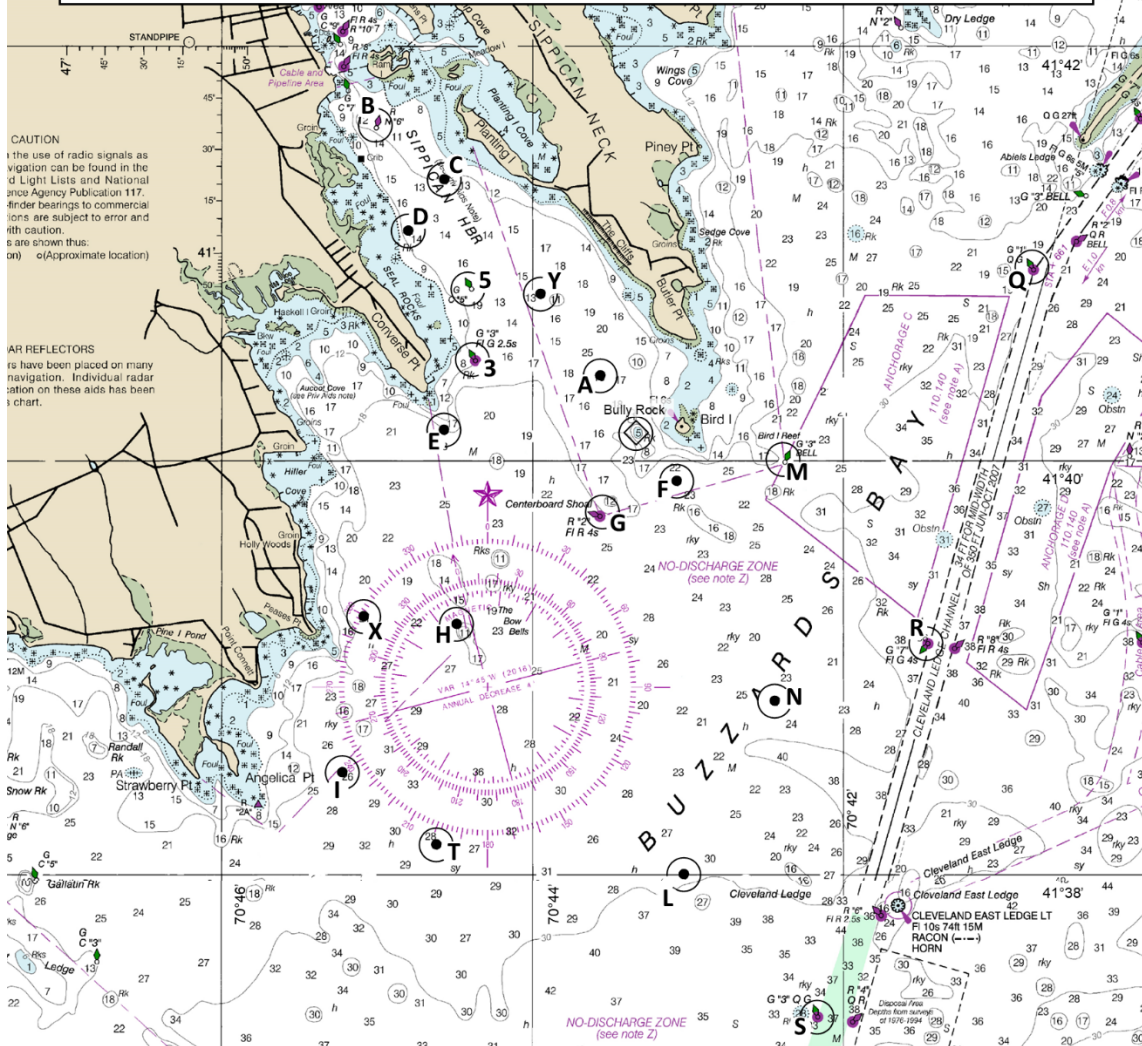
BYC Race Committee Chair: Tracy McNeil – [tltmcneil@verizon.net](mailto:tltmcneil@verizon.net)

**Addendum A: Venue**

Information concerning aids to navigation

**2022 RACE CHART**

**BEVERLY YACHT CLUB, MARION, MA**



**THIS CHART IS NOT TO BE USED FOR NAVIGATIONAL PURPOSES.**

Except when indicated as turning marks, all yachts must pass east of marks "3", "5", and "E", and to the south of marks "F" and "I". All yachts must pass west of the Bully Rock marker.

- - USCG Aid to Navigation
- - BYC Private Mark
- ⊙ - BYC Private Rock Marker

MARK	DESCRIPTION	MARK	DESCRIPTION
3	Sippican Harbor Lighted Green Buoy "3" (FI G 2.5s) East of Converse Point	O	Portable Offset Turning Mark near Windward Turning Mark
5	Sippican Harbor Green Can "5" East of Seal Rocks	P	Portable Alternate Finish Line Pin directly on the opposite side of start boat from starting line pin
8	Weepecket Rock Lighted Red Gong "8" (FI R 2.5s) (off chart)	Q	Hog Island Channel lighted Green Buoy "1" (Q FI G) Southwest of Abiels Ledge
A	BYC Yellow Can "A" West of Butler Point	R	Cleveland Ledge Channel Lighted Green Gong "7" (FI G 4s) Northeast of Cleveland Light
B	Sippican Harbor Red Nun "6" South of Ram Island	S	Cleveland Ledge Channel Lighted Green Buoy "3" (Q FI G) Southwest of Cleveland Light
C	BYC Yellow Can "C" West of Planting Island	T	BYC Yellow Can "T" Southeast of Angelica Point
D	BYC Yellow Can "D" Northeast of Seal Rocks	U	Portable Pin end of Start / Finish Line to Port of Signal Boat
E	BYC Yellow Can "E" Southeast of Converse Point	V	Portable Turning Mark a Short Distance to Windward of Start / Finish
F	BYC Yellow Can "F" South of Bird Island	W	Portable Windward Turning Mark at Bearing and Distance Posted on signal boat
G	Sippican Harbor Lighted Red Buoy "2" (FI R 4s) at Centerboard Shoal Southwest of Bird Island	X	BYC Yellow Can "X" East of Peases Point
H	BYC Yellow Can "H" at The Bow Bells East of Point Connett	Y	BYC Yellow Can "Y" Southwest of The Cliffs
I	BYC Yellow Can "I" East of Angelica Point	Z	Buzzards Bay Lighted Red Gong "10" (FI R) Southeast of West Island (off chart)
J	Portable Turning Mark to Leeward of Start / Finish Line		
K	West Island Red Bell "2SE" (off chart)		
L	BYC Yellow Can "L" West of Cleveland Ledge Light		
M	Bird Island Green Bell "3" Southeast of Bird Island		
N	BYC Yellow Can "N" Southeast of Bird Island		