



GSBYRA Patin Junior Double handed Championship July 11, 2022



Organizing Authority – GSBYRA

Host Club: Bellport Bay Yacht Club
Bellport Lane
Bellport, NY 11713

SAILING INSTRUCTIONS

posted 6/05/2022

1. RULES

- 1.1 The regatta will be governed by the rules as defined in The Racing Rules of Sailing.
- 1.2 The [Code of Conduct](#) will apply.
- 1.3 This championship is not being conducted as a sanctioned or class association event. Only the Equipment Measurement Rules for the Club 420 class will apply.
- 1.4 **RRS 40.1 applies.**
- 1.5 **RRS 60.1(a)** is changed to prohibit a boat from protesting another boat for an alleged breach of any class rule other than class equipment measurement rules.
- 1.6 **RRS 61.1(a)** is changed so that "A boat intending to protest about an incident that occurs in the racing area shall notify the race committee finish boat of her intention as soon as practicable after finishing, and identify by sail number of the boat(s) being protested".
- 1.7 **RRS 64.1** is changed to allow penalties imposed by the Protest Committee, for hearings held under Rule 60.3, as changed, which may range from a reprimand to a dismissal from the regatta.

2. NOTICES TO COMPETITORS

Notices to competitors will be posted on the Official Notice Board located near the Registration desk.

3. CHANGES TO SAILING INSTRUCTIONS

- 3.1 Sailing Instructions will be available at the Registration Desk and will be available during Check In time and online.
- 3.2 Changes to the SIs will be posted no later than 0900 of the morning of the race.

4. SIGNALS MADE ASHORE

- 4.1 Signals made ashore will be displayed from the flagpole south of the Clubhouse.
- 4.2 When code flag **AP** is displayed ashore, "1 minute" is replaced with "not less than 30 minutes" in the Race Signal **AP**. This changes rule Race Signals AP.

5. SAFETY

- 5.1 Before the warning signal of the first race in which they intend to compete each day, boats shall check in by sailing on starboard past the race committee signal boat. Each boat shall hail her sail number until acknowledged by the signal boat. Failure to check in may result in a penalty.
- 5.2 A boat retiring from a race shall notify a Race Official vessel before leaving the course, or, when that is impractical, immediately after arrival ashore.

6. SCHEDULE OF RACES

Monday, July 11, 2022

0800 to 0900

0800 to 0900

0930

1030

1600

Check in/Setup

Continental Breakfast

Mandatory competitors Meeting

First warning for racing – Rule 26 start

Subsequent races to follow

No warning after 1600

- 6.1 A maximum of six (6) races are scheduled.

- 6.2 The warning signal for succeeding races will be made as soon as possible after finish of preceding race.
- 6.3 No warning signals will be made later than 1600.

7. RACING AREA

The sailing Area will be within Bellport Bay Attachment A.

8. THE COURSE

- 8.1 Courses will be Windward/Leeward, W/L 1, W/L 2, or W/L 3 as described in Courses Diagram Attachment B.
- 8.2 No later than the Warning Signal of each Race the Race Committee will verbally notify each competitor of the Course to be sailed.

9. MARKS

- 9.1 Mark 1 will be a Yellow Tear Drop, Mark 1A will be an Orange Cylinder, Marks 2A and 2 B will be Yellow Tetrahedrons, and the Pin at the Port end of the Star/Finish Line will be a large Orange Cylinder.
- 9.2 Any mark of the course may be replaced by a large orange cylinder.

10. THE START

- 10.1. **Races will be started using RRS 26, except that the Warning Signal will precede the Start Signal by 3 Minutes, the Preparatory Signal will precede the Start Signal by 2 Minutes.**

A series of short signals may be made before the sequence begins in order to attract attention.

<u>Signal</u>	<u>Signal Sound</u>	<u>Time Before Start</u>
Warning – Class Flag displayed	1 sound	3 minutes
Preparatory – Race Flag displayed	1 sound	2 minutes
Preparatory Flag removed	1 long sound	1 minute
Start – Class Flag removed	1 sound	Start

- 10.2 The Start line will be between the Race Committee Signal Boat staff displaying an Orange Line Flag at the Starboard end of the Line and an Orange Cylinder at the Port end of the line.

11. RECALLS

- 11.1. The RC will attempt to hail the recall numbers of OCS boats after the starting signal. This changes RRS 29.1.
- 11.2 The failure of any boat to hear the hail, promptness of the hail, failure to hail any boats. Or the order of boats hailed shall not be grounds for redress. This changes RRS 62.1

12. CHANGE THE NEXT LEG OF THE COURSE

Rule 33 applies.

13. THE FINISH

- 13.1 The Finish Line will be the same as the Start Line.
- 13.2 The START/FINISH LINE is an Obstruction that shall not be crossed except when starting or finishing.
- 13.3 The Race Committee may Shorten the Course at the Start/Finish Line by Displaying Flag S with 2 Sound Signals. This changes RRS 32.2.

14. TIME LIMIT

- 14.1 The time limit for each race will be 45 minutes for the first boat to finish.
- 14.2 Boats failing to finish within 10 minutes after the first boat that sails the course in accordance with rule 28 finishes will be scored TLE (Time Limit Expired) without a hearing and scored one more than the number of boats in the race. This changes rules 35, 63.1, A4.2 and A5.

15. EVENT PROTESTS AND REQUIREMENTS FOR REDRESS

- 15.1 Protest and Redress forms will be available at the Registration Table and must be returned to a committee person at the table.
- 15.2 The Protest Filing Time Period will be posted on the Official Notice Board next to the Registration Desk inside the Clubhouse.

15.3 Protest Hearing Schedule will be posted on the official notice board.

15.4 Competitors must notify the race committee of intent to protest another boat after a race and prior to communicating with a coach.

16. REPLACEMENT OF EQUIPMENT

16.1 Substitution or repair or replacement of hulls, sails, or equipment will not be allowed without prior approval of the Race Committee.

17. AREA B EVENT

17.1 The Area B Double-handed Qualifier event is open to all qualified competitors.

17.2 Registration for the Area B Double-handed Qualifier event shall be submitted online.

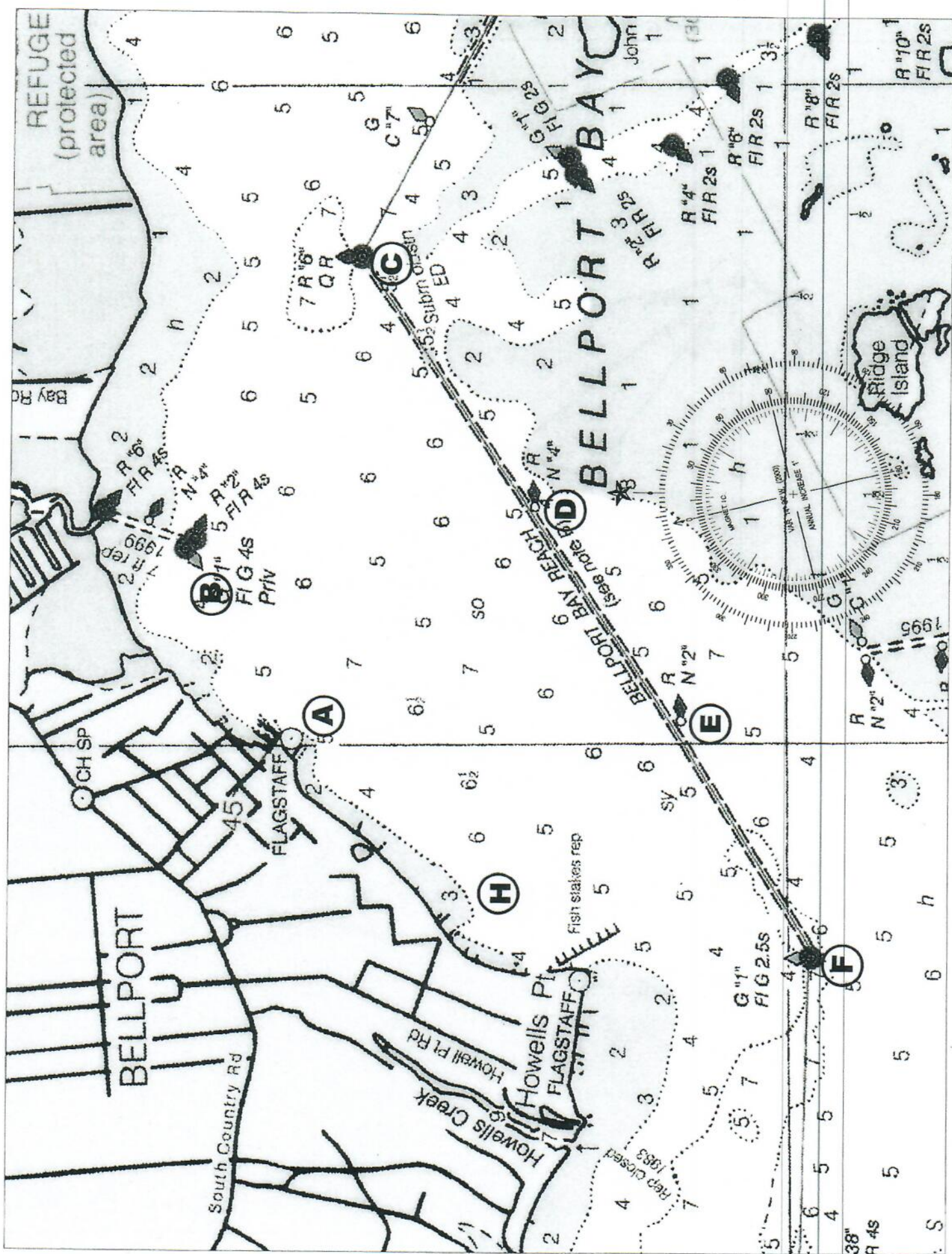
18. FURTHER INFORMATION - For additional information contact either GSBYRA official below:

GSBYRA Championship Coordinator:

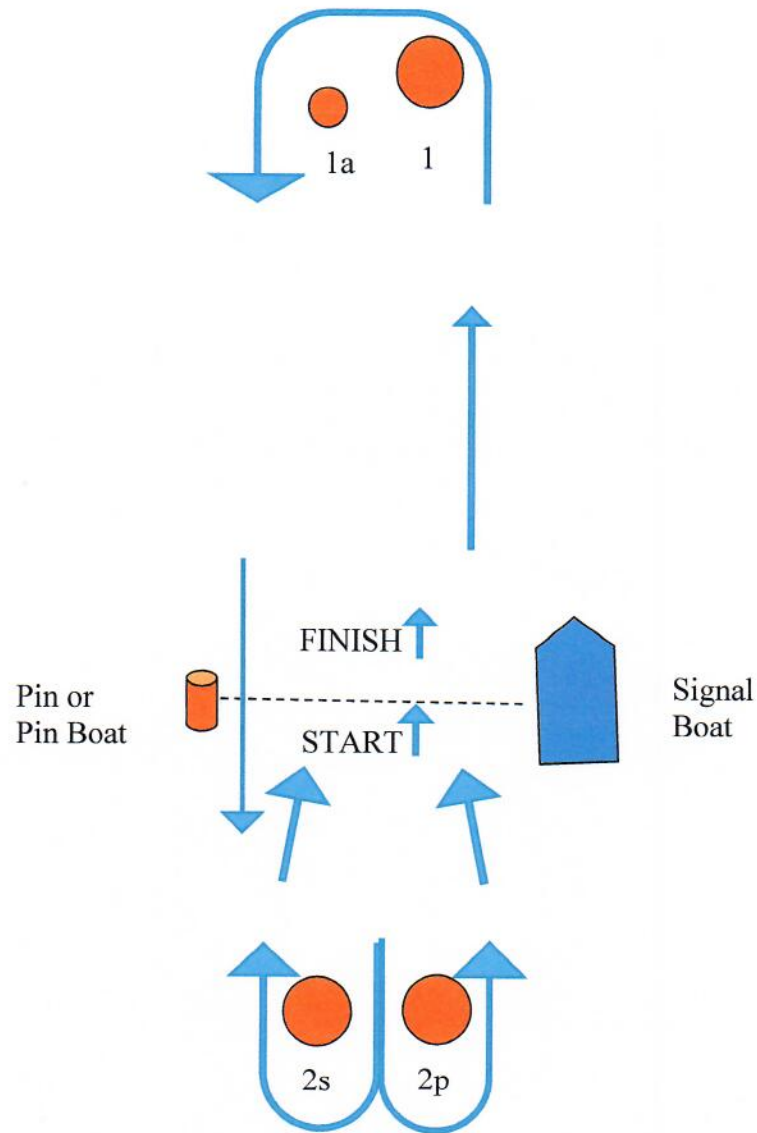
Joe Mullen: jy781@optonline.net

Race Committee Chairman:

Tom Conlin: tgconlin@gmail.com



Attachment B – Course Diagram



Courses Mark Rounding Order

W/L 1	Start - 1, 1a, 2s/2p, Finish
W/L 2	Start - 1, 1a, 2s/2p, 1, 1a, 2s/2p, Finish
W/L 3	Start - 1, 1a, 2s/2p, 1, 1a, 2s/2p, 1, 1a, 2s/2p, Finish