



## *South Beach Yacht Club*

Sailing Instructions  
2022 South Beach Hops Pursuit Races  
South Beach Yacht Club

### 1. RULES

1.1 Races will be governed by the rules as defined in current version of The Racing Rules of Sailing.

1.1 The Starting Line is at the entrance to McCovey Cove between the corner of Pier 52 and end of Oracle Park Pier by Marina.

1.2. Boats in subsequent Divisions shall not enter Mc Covey Cove until all boats from the prior Division have cleared McCovey Cove.

### 2. ELIGIBILITY AND ENTRY

2.1. The Regatta is open to all boats with a valid 2022 Northern California PHRF certificate

2.2. Eligible boats shall complete registration online ([www.southbeachyachtclub.org](http://www.southbeachyachtclub.org)) in accordance with the Notice of Race.

### 3. NOTICES AND COMMUNICATION

3.1. Official Notices will be posted on the Regatta Network, South Beach Hops Pursuit Race electronic bulletin board that can be found at Regatta Network

3.2. Changes to the sailing instructions will be posted on the SBYC website, and emailed to entrants conforming to the Notices of Race (NOR) 7.3, by 5 PM the Friday before they will take effect.

3.3. Competitors should monitor VHF Channel 78 for official race signals.

3.4. Communication from the Race Committee shall not be considered outside help. This changes Rule 41.

1. Check in is required by making sail numbers visible when entering McCovey Cove. Boats are also encouraged to monitor VHF Channel 14 for updates on large vessel traffic while underway.

2. Racers not finishing the race or not finishing the race within the time limit are required to contact the Race Committee and inform them. Unless directly and specifically acknowledged by the RC, skippers must leave a text message on 415-971-1127. If not able to report while underway, telephone contact must be made immediately after coming ashore.

### 4. SIGNALS

4.1. This race will use sound signals and VHF radio voice over channel 78.

4.2. Class flags are not required to be flown from the backstay.

## 5. SCHEDULE AND NUMBER OF RACES

5.1. Two Divisions will be racing.

5.1.1. Division Delta - Spinnaker Boats

5.1.2. Division Echo - Non-spinnaker Boats

5.2. The first warning is scheduled for 12:00. The first race will begin at 12:05

5.3. Boats will be assigned a start time based on PHRF rating by Regatta Network and will remain in McCovey Cove until their assigned time.

## 6. STARTING SEQUENCE

6.1. Delta Division - all Spinnaker boats will start their race at 12:05 and each boat shall start at their assigned time.

6.2. Echo Division - all Non-Spinnaker boats will not come into Mc Covey Cove until the 5 horn signal. Echo warning signal will occur 5 minutes after the invitation into McCovey Cove.

6.3. Boats are permitted to use their engines until 1 minute before their start time.

## 7. RACING AREA

7.1. The race will be sailed in the South Bay Waters of San Francisco Bay located in the general area east of the South Beach Harbor.

## 8. THE COURSE

8.1. The marks, courses, and roundings are described in Attachment 1 – Courses

## 9. THE START

9.1. The Start line will be a line between the orange flag at the end of Pier marking the entrance to South Beach Marina at the Mc Covey Cove and the corner of Pier 52 opposite the marina pier.

## 10. RECALLS

10.1. The Race Committee may hail the sail number of the boat (s) identified On Course Side (OCS) of the starting line prior to their assigned start time. The failure of a hail, the failure of a boat hearing the hail or the order of the hails shall not be grounds for redress. This changes rule 62.1(a) & RRS 25.

## 11. THE FINISH

11.1. The finish line will be the same as the start line

## 12. TIME LIMITS

12.1. No races will be started after 14:00 and all races will be concluded by 15:00

12.2. A boat failing to finish within 45 minutes after the first boat in her division sails the course and finishes will be scored "DNF" by the Race Committee. This changes RRS 35, A4, and A5.

12.3. The time limit for the first boat in each division to sail the course and finish shall be two (2) hours.

**13. SCORING**

13.1 Races will be scored in accordance with NOR's.

**14. PROTESTS**

14.1. Protests must be filed with the PRO. Forms are in an envelope in the SBYC Office.

**15. COMMERCIAL TRAFFIC AND/ OR INTERFERENCE WITH OTHER VESSELS**

15.1. Rule 9 of the Inland Rules of the Road applies. Boats shall not impede the passage of a vessel which can safely navigate only within a narrow channel or fairway (see US Dept. of Commerce chart 18649 for designated shipping channels and fairways) A violation of Rule 9 is subject to protest by any competitor or the RC, and is not exonerated by an alternate penalty. RRS 60.3 is changed to add: "(d) call a hearing for an alleged breach of Rule 9 if notified by government, commercial or individual vessel of possible infraction. It shall also extend the time limit under RRS 61.3 to accept the information." A DSQ for violation of Rule 9 shall be considered a DNE.

15.2. The South Beach Yacht Club and the South Beach Yacht Club Race Committee shall cooperate with and provide information relevant to any investigations of impeding passage or violation of USCG Navigation Rules by the Coast Guard or other governmental authority.

**16. DISCLAIMER OF LIABILITY**

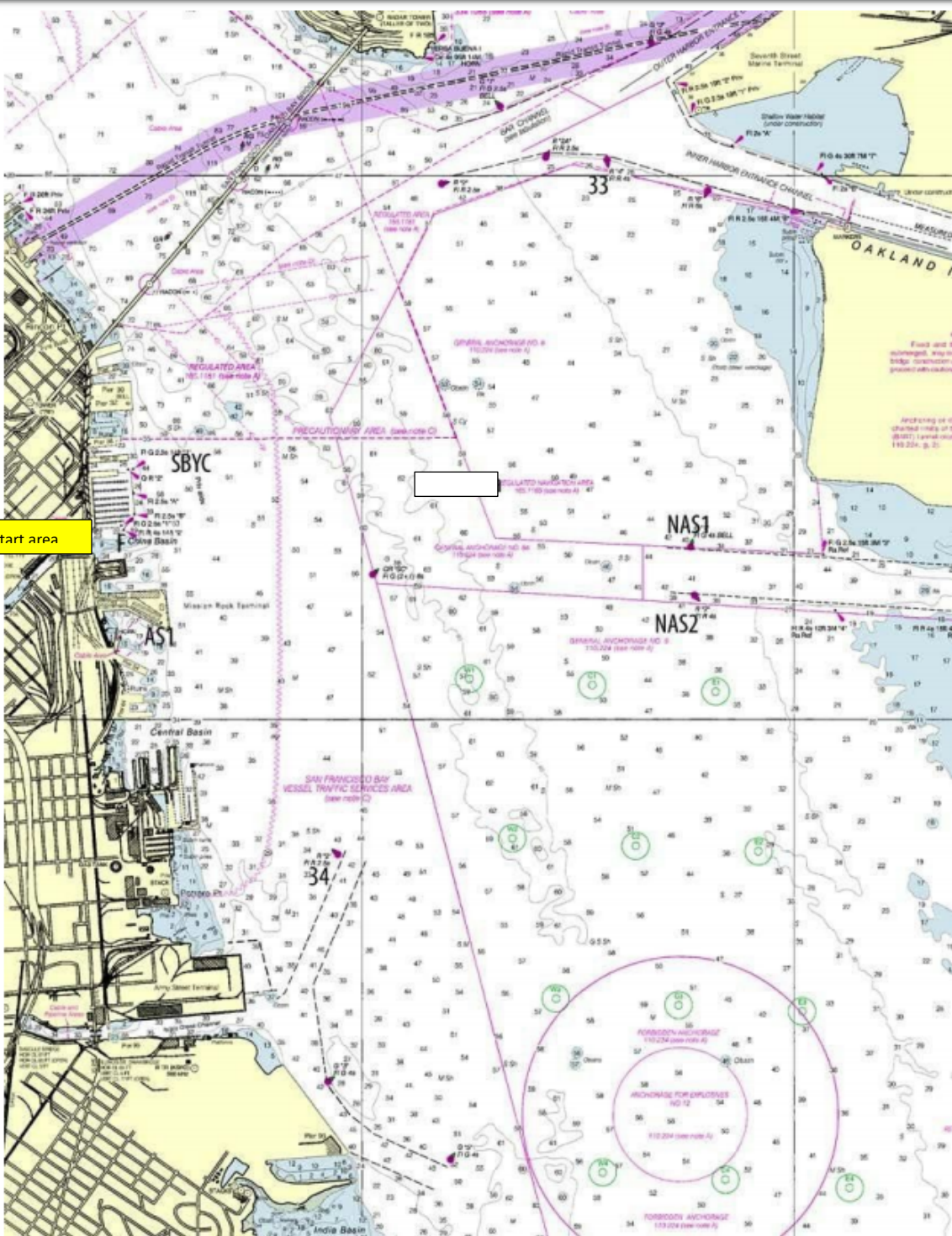
16.1 Boats and competitors compete in the Regatta entirely at their own risk. See RRS 4 – Decision to Race. The organizing authority, the South Beach Yacht Club, and/or any of their collective agents or representatives will not accept any liability for material damage, personal injury or death sustained in conjunction with or prior to, during or after the Regatta.

**ATTACHMENT 1: COURSES AND MARK DESIGNATIONS**

COURSE	START						FINISH
3 6 mile	MC COVEY COVE	AS 1	34	SC 1	AS 1	SC 1	MC COVEY COVE
4 6.85 miles	MC COVEY COVE	AS 1	34	NAS 1 or 2			MC COVEY COVE
11 9.15 miles	MC COVEY COVE	NAS 1	SC 1				MC COVEY COVE

### Mark Descriptions

Mark	Mark Description	Mark	Mark Description
<b>Start/ Finish</b>	The start/finish line will be in Mc Covey Cove between the end of the Pier and the SF Port Graphic on the opposite side from the Pier.	<b>SC1</b>	SC1 is a green & red buoy, "SC" FL G(2+1), approx. 1.0 nm ENE of Mission Rock Terminal
<b>33</b>	Oak Inner Harbor Entrance, "4" Fl R 4s	<b>AS1</b>	Yellow mark, approx. 0.25 nm East of BVBC
<b>34</b>	Red buoy "2" FL R 2.0s, approx. 0.5 nm east of Potrero Point	<b>NAS1</b>	NAS1 Alameda Channel Mark "1" FL G 4s Bell
<b>L</b>	A temporary leeward mark set downwind of the start/finish line.		



Start area

