



SAILING INSTRUCTIONS

Rev 1

MBYC Offshore #1

April 9, 2022

Organizing authority is Maui Boat & Yacht Club

RULES

The races will be governed by the Racing Rules of Sailing (2021-2024); the prescriptions of US Sailing; the prescriptions of HYRA; (except as any of these are altered by this Notice of Race or the Sailing Instructions.)

VHF radios and GPS are required equipment aboard all boats for this event.

1 ELIGIBILITY

Open to yachts meeting the Maui [Safety Equipment Requirements](#) (Maui SER) for Coastal category races, and other yachts that may be invited by the organizing authority. (A word of caution: Please do not enter this race unless you are confident in your boat and your crew's ability to navigate safely in big seas and 20-30 knots true wind speed with possible higher gusts. This is an offshore race in challenging conditions.)

Eligible yachts may be entered by registering with the Race Committee at the mandatory Skippers Meeting and submitting the required fee.

2 CHANGES IN SAILING INSTRUCTIONS

Any change in sailing instructions will be distributed at the skippers meeting.

3 NOTICES TO COMPETITORS

Any notices to competitors will be distributed at the skippers meeting

4 SCHEDULE and START SEQUENCE

Skippers Meeting at **0930** hours Saturday April 9, 2022 at Lahaina Harbor by MB&YC's dock box next to slip 25. The start will be **1030 hours**. Make certain there is a crew member available to man VHF channel 71 and a GPS-synchronized time source.

If RC boat is not available, start will be via Rabbit Start with details and timing finalized at skipper's meeting

5 RACING AREA

The race is currently planned to take place in the Au Au Channel area west of Lahaina. The long course will be used for the A class. This will start at the Atlantis buoy, and rounding the The short course will be used for the C Class. Shortened course will be used for A Class if the wind is light. The start will be at the Atlantis buoy and a mark. See Appendix A Course Diagram

6 FINISH

Each yacht shall mark their own finish time when they reach the designated virtual finish "MARK A". Instructions to will be further detailed at skipper's meeting. Each yacht shall report its finish time to Tom Bolz via TEXT MESSAGE to cell phone 808-498-3229 ASAP for scoring. (See Appendix for coordinates)

7 SCORING

Scoring of the event shall be in accord with the PHRF Handicap system. The Low Point System will be used to score a yacht's regatta position. MBYC's scoring protocol can be accessed at <https://goo.gl/hmYtAu>

8 WITHDRAWING

A yacht leaving the race course shall notify the Race Committee by hail, VHF radio channel 71, cell phone, or by telephone message to Tom Bolz 808-498-3229, and by VHF radio (channel 71) to at least one other vessel participating in the race. Contact with another vessel to notify withdrawal from the race must be verified. Any yacht failing to do so may be subject to protest and exclusion from any further MB&YC events in the following season..

9 LIABILITY

Competitors participate in the regatta entirely at their own risk. See RRS 4, Decision to Race. Neither Maui Boat & Yacht Club, its officers, board members, nor any of the organizing bodies, committees or individuals appointed to or volunteering for this race committee will not accept any liability for material damage or personal injury or death sustained in conjunction with or prior to, during, or after the regatta. Competitors and crews shall enter at their own risk.

APPENDIX A - COURSE DIAGRAMS

The race course will be confirmed or changed at skipper's meeting depending on weather and other relevant elements.

Short Course:



EDIT ROUTE

OS-SAT-SHORT

- Display
- Race

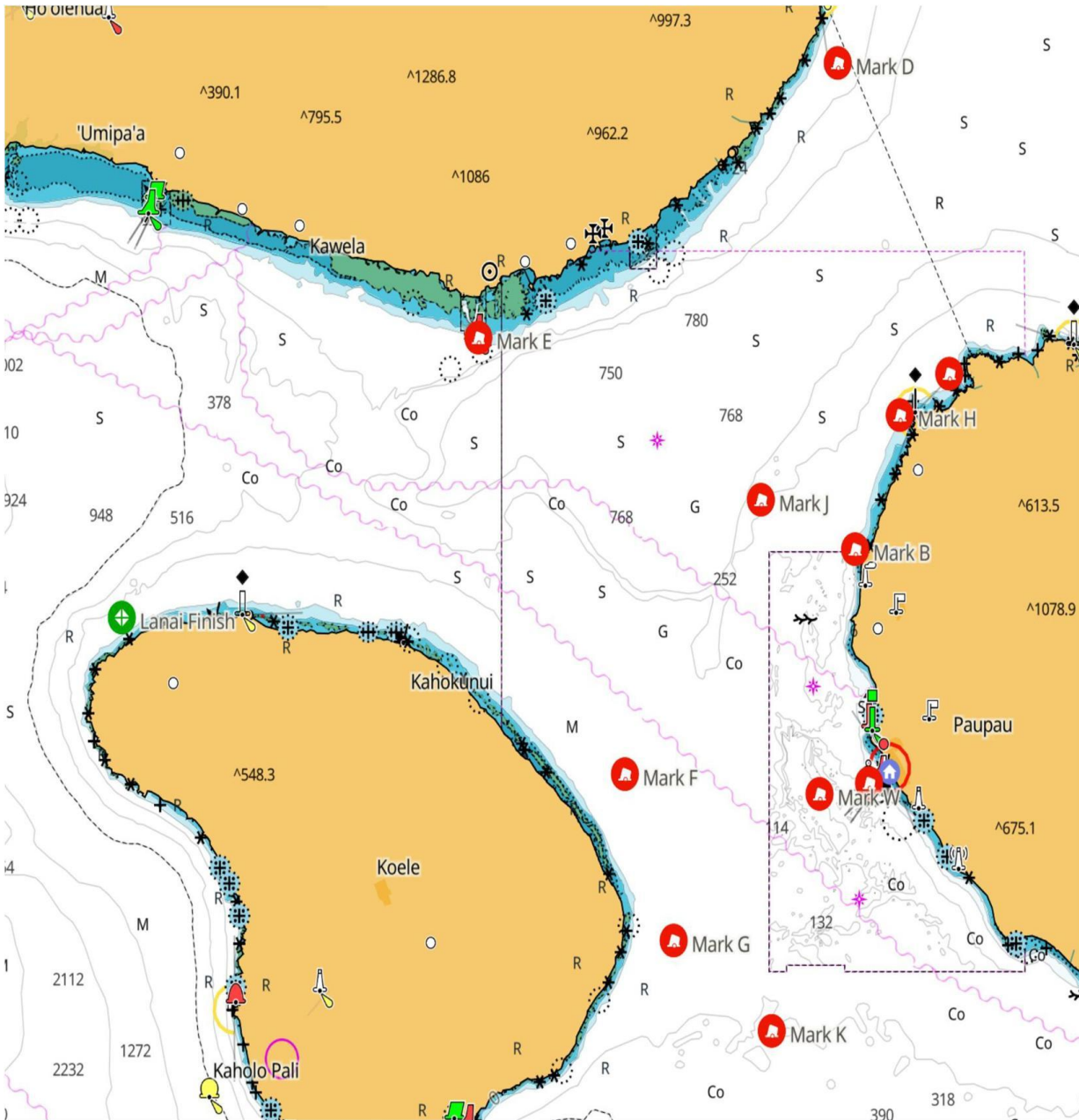
Leg	Waypoint	Distance (NM)	Bearing (°M)	TWA (°)	Rounding
1	OSM	4.11	226	-24	Port
2	OSL	2.17	123	79	Port
3	BCA	4.20	016	-173	Auto

	OSL	6.38 NM	N 20°48.239'	2:56 pm
		150 °M	W 156°43.247'	04/07/2022
	OSM	4.56 NM	N 20°49.709'	1:23 pm
		162 °M	W 156°44.958'	04/07/2022

Long Course:



Marks OSG and OSK are the same coordinates and Marks G and K in the all-offshore-waypoints. Marks OSM and OSL are she shortened marks. Round marks on the port side including the finish at the Atlantis buoy.



Mark W	20°51.76'N	156°42.72'W	Lahaina 2 mile mark
Mark K	20°46.49'N	156°44.09'W	Auau Mid Channel
Lanai Finsh	20°55.68'N	157°02.72'W	Lanai Finish
Mark A	20°52.00'N	156°41.30'W	Lahaina - Black Mooring
Mark B	20°57.20'N	156°41.70'W	Honokowai
Mark C	21°01.10'N	156°39.00'W	Honolua
Mark D	21°08.00'N	156°42.20'W	Mokuho'oniki
Mark E	21°01.90'N	156°52.50'W	Kamalo Harbor
Mark F	20°52.20'N	156°48.30'W	Lanai 1
Mark G	20°48.50'N	156°46.90'W	Lanai 2
Mark H	21°00.18'N	156°40.42'W	Haweia Pt
Mark J	20°58.30'N	156°44.40'W	Kalohi