



School's Out Regatta

May 14-15, 2022

Organizing Authority - Davis Island Youth Sailing Foundation

SAILING INSTRUCTIONS

The notation '[NP]' in a rule means that a boat may not protest another boat for breaking that rule. Penalties for these breeches may be less than disqualification if the protest committee so decides. This changes RRS 60.1(a).

1 RULES

The regatta will be governed by the *rules* as defined in *The Racing Rules of Sailing*.

2 NOTICES TO COMPETITORS

Notices to competitors will be posted on the official notice board located on the west exterior wall on the lower level of the Clubhouse.

3 CHANGES TO SAILING INSTRUCTIONS

Any change to the sailing instructions will be posted before 0830 on the day it will take effect, except that any change to the schedule of races will be posted by 2000 on the day before it will take effect.

4 SIGNALS MADE ASHORE

4.1 Signals made ashore will be displayed from the flagpole at the west end of the property.

4.2 When flag AP is displayed ashore, '1 minute' is replaced by 'not less than 45 minutes' in the race signal AP.

5 SCHEDULE OF RACES

Day	Time	
Sat	1030	First Warning – Optimist classes
	1100	First Warning – All other classes
Sun	0930	First Warning – All classes
	1500	No Warning signals after

6 CLASS FLAGS, RACING AREAS, MARKS

The class flags, racing areas, and marks are described in Attachment A.

7 THE COURSES

7.1 The diagrams in Attachment B show the courses, including the approximate angles between legs, the order in which marks are to be passed, and the side on which each mark is to be left.

7.2 No later than the warning signal, the race committee signal vessel will display the course designation on a white board.

8 THE START

8.1 The starting line will be between the course side of a staff displaying an orange flag on the race committee signal vessel at the starboard end and the course side of the port-end starting mark.

8.2 Boats whose warning signal has not been made shall avoid the starting area during the starting sequence for other races.

8.3 A boat may not start more than 5 minutes after her starting signal.

8.4 The starting sequence for each race circle is described in Attachment A.

8.5 Classes may be combined for starts.

9 RECALLS

When an individual recall is signaled, the race committee will attempt to hail the sail numbers of the boats that are OCS. The timing and order, or omission, of such hails or the failure of a boat to hear a hail will not be considered an improper action or omission of the race committee under rule 62.1.

10 CHANGE OF THE NEXT LEG OF THE COURSE

To change the next leg of the course, the race committee will move the original mark (or the finishing line) to a new position.

11 THE FINISH

The finishing line will be between a staff displaying a blue flag on a race committee vessel and the course side of the finishing mark.

12 TIME LIMITS

12.1 The time limit for the first boat in each race to sail the course and finish is 60 minutes.

12.2 Boats still racing more than 15 minutes after the first boat sails the course and finishes may be "finished in place" by the race committee.

13 PROTESTS AND REQUESTS FOR REDRESS

13.1 Add to RRS 61.1(a) "The protesting boat shall inform the Race Committee of the boat(s) being protested at the finishing line immediately after finishing."

13.2 Hearing Request forms are available at the Regatta Room. Protests and requests for redress or reopening shall be delivered there within 60 minutes after the race committee finish vessel docks. The docking time will be posted.

13.3 Notices will be posted within 15 minutes after the protest time limit to inform competitors of hearings in which they are parties or named as witnesses. Protests will be heard in the approximate order of receipt in the Regatta Room.

13.4 Notices of protests by the race committee or protest committee will be posted to inform boats under RRS 61.1(b).

14 SAFETY REGULATIONS

14.1 [NP] Prior to the warning signal for the first race each day, each boat shall sail on *starboard* tack past the stern of the race committee signal vessel, and hail her sail number until acknowledged by the race committee. Failure to comply with this instruction will result in a 20% penalty for the first race that day.

14.2 [NP] A boat retiring from a race or leaving the course before racing for the day is completed, shall

notify the race committee before leaving the course, or when that is impossible, an official at DIYC immediately after arrival ashore. Boats failing to do so may be protested by the race committee, and may result in disqualification of a boat from the day's racing.

14.3 [NP] All competitors shall wear a PFD at all times while on the water (except while effecting a change of clothing or personal gear). Flag Y will not be flown.

15 SUPPORT VESSELS, COMMUNICATIONS BY R.C.

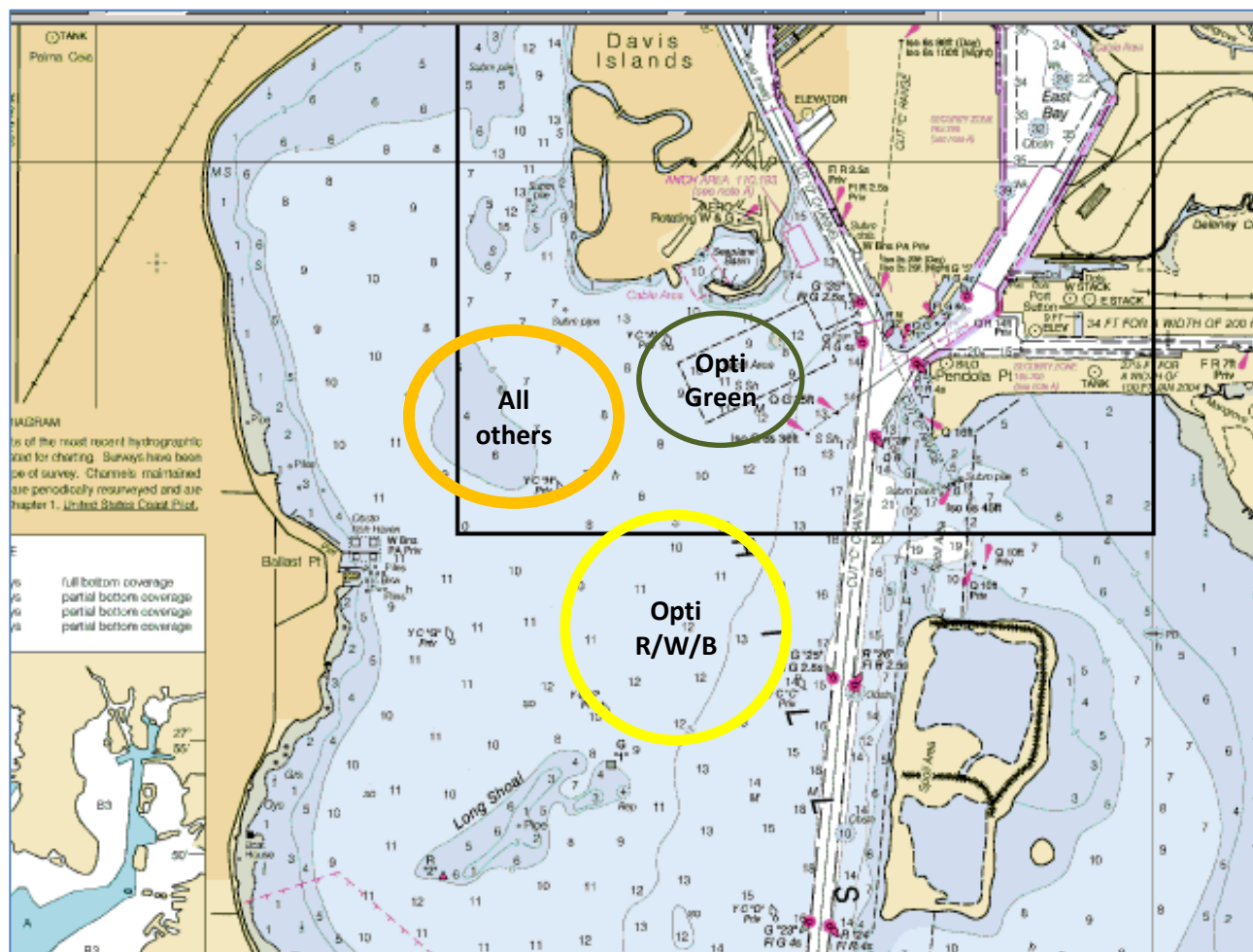
15.1 The Regatta Chair will monitor VHF channel 73. Attachment A lists the other VHF channels used.

15.2 [NP] Coaching of Opti Green fleet competitors while racing is permitted, however coaching shall be limited to skippers in the bottom half of the fleet in any given race. Coach boats shall neither create wakes nor otherwise interfere with competitors. Coaches shall provide fair and consistent support to all competitors, not just their team or sailor. Violation of this instruction may result in any penalty that the protest committee deems appropriate, up to, and including the disqualification of the coached skipper from the regatta.

15.3 Attention is called to NoR 8.3, requiring all outboard-equipped support vessels to demonstrate kill-switch compliance.

Attachment A

Racing Areas, Mark Descriptions, Class Flags, Starting Sequence



Course	VHF	Mark Descriptions	Class Flags	Starting Sequence
Opti Green	5	Marks 1, 2, & 3 – Green tetrahedrons Start/Finish – Red tetrahedron	Opti Green - White G on Green background	5 minute
Opti R/W/B	69	Marks 1, 3P, & 3P – Large yellow balls 1a – Small orange ball Start – Orange tetrahedron Finish – Small orange ball	Opti R/W/B - Opti symbol on white background	5 minute
ILCA 7, ILCA 6, ILCA 4, & C420	72	Marks 1, 3P, & 3P – Yellow tetrahedrons 1a – Small orange ball Start – Orange tetrahedron Finish – Small orange ball	ILCA 7 – red ILCA logo on white ILCA 6 - red ILCA logo on green ILCA 4 – red ILCA logo on yellow 420 – 420 on white	Appendix U – 3 minute Audible-Signal Racing System

NOTE – if one there is only one leeward mark it shall be rounded to port.

Attachment B – COURSE DIAGRAMS – All Classes except Optimist Green

Optimist R / W / B		ILCA / 420	
W1	W2	W1	WL2
Start, 1 (port), 3 (port), finish	Start, 1 (port), between 3p and 3s, 1 (port), 3s (port), finish	Start, 1 (port), 1a (port), 3 (port), finish	Start, 1 (port), 1a (port), between 3p and 3s, 1 (port), 1a (port), 3s (port), finish

Appendix B - COURSE DIAGRAMS – Optimist Green

