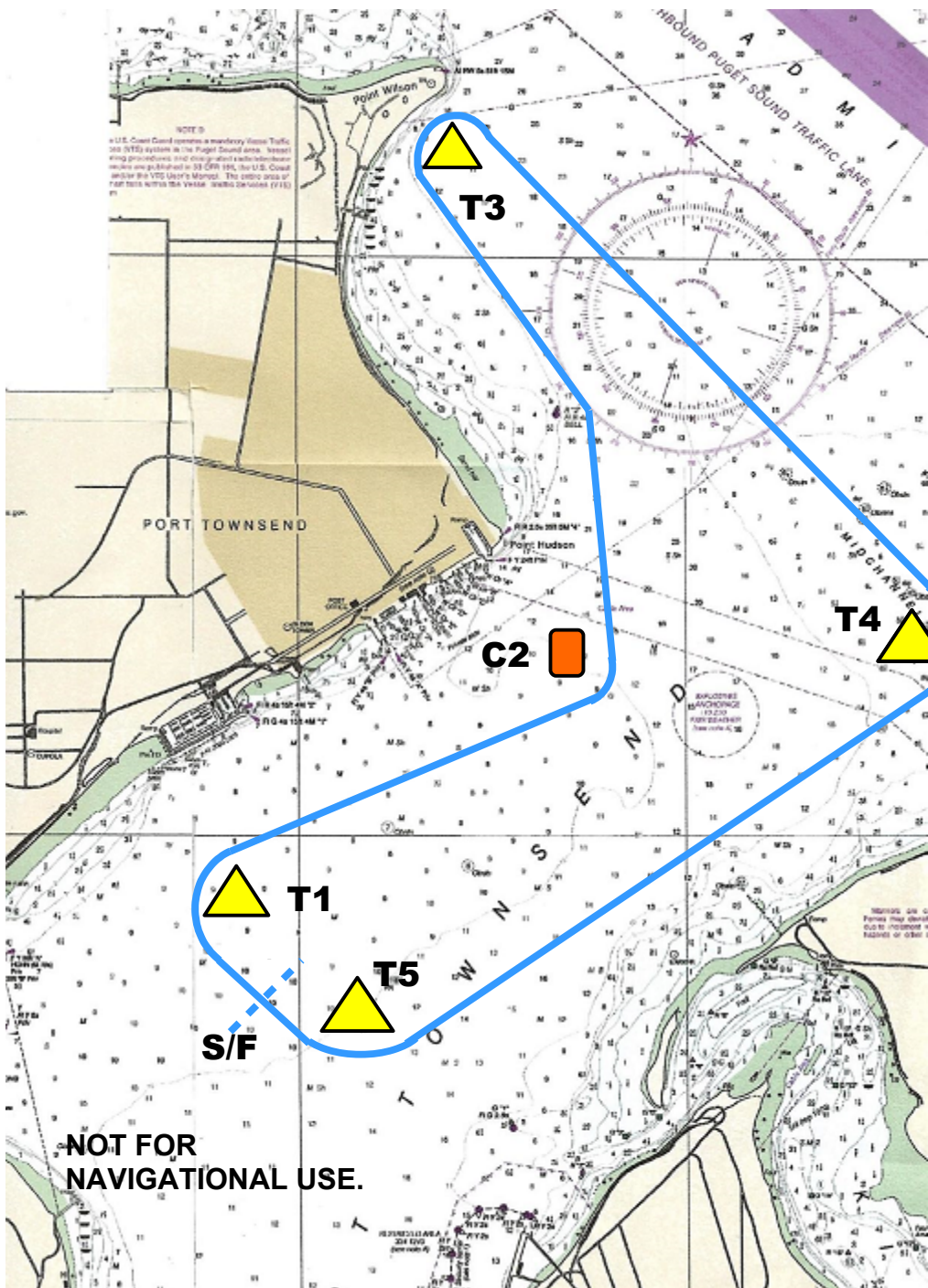


Classic Mariners Regatta 2022

Sunday Pursuit Race



The Start

Each boat will be given its own start time based on that boat's PHRF rating and the length of the course. The slowest boat starts first.

Inshore Class boats generally do not have PHRF ratings, so any inshore boats wishing to sail the course will start as a group with the first starter.

The Start/Finish line will be in the South end of the Bay and will be approximately square to the wind. Boats will start to windward. (If in doubt, for a windward start the Pin will be on your Port side.)

The first boat will be given the full start sequence. (Horns & Flags). Each subsequent boat will be given a single horn at their assigned start time, but will not be announced. See the SI's, above, for Over Early penalty.

Should the first start have to be delayed for any reason the Race Committee will announce, before recommencing, the number of minutes everyone should add to their start time.

The course

The course, diagrammed on the left, is about 9 nautical miles around.

If the wind has N component;-

Start

Yel. Tet. 1 to Stbd.

Or. Cyl. 2 to Port

Yel. Tet. 3 to Stbd.

Yel. Tet. 4 to Stbd.

Yel. Tet. 5 to Stbd.

Finish

If wind has S component;

Start

Yel. Tet. 5 to Port

Yel. Tet. 4 to Port

Yel. Tet. 3 to Port

Or. Cyl. 2 to Stbd.

Yel. Tet. 1 to Port

Finish

NOTE:The Pt Hudson Red Bell Buoy is left to Shoreward at all times.

Finish Times Will be recorded for all boats finishing..

Possible Shorter Course:-

The wind forecast may indicate a need for a shorter course. In which case the general shape of the course and the numbering and rounding order of the marks will remain the same. Mark T3 will move SE and T1 & T5 may move NE

Individual start times for both courses will be distributed at the Sunday Morning Skipper's Meeting

Time limit:- For all boats - 4 hours after the start of the first boat.