



2022 GBCA Offshore

June 3-5, 2022

Organizing Authority: Galveston Bay Cruising Association
Clear Lake Shores, TX USA

SAILING INSTRUCTIONS

1 RULES

- 1.1 The event is governed by the *rules* as defined in *The Racing Rules of Sailing (2021-2024) (Rules,RRS)*.
- 1.2 The notation “[DP]” in a rule in these Sailing Instructions means that the penalty for a breach of a rule may, at the discretion of the protest committee, be less than disqualification.
- 1.3 From sunset to sunrise, Part 2 of the Rules shall not apply and be replaced by Part B, The Steering and Sailing Rules, of the International Regulations for Preventing Collisions at Sea (COLREGS).
- 1.4 These Sailing Instructions are to accompany the Notice of Race dated April 27, 2022. In the event of a discrepancy between these SIs and the NOR, these SIs shall prevail.

2 CHANGES TO SAILING INSTRUCTIONS

- 2.1 Any change to the sailing instructions will be posted before 0800 on the day it will take effect, except that any change to the schedule of races will be posted by 2000 on the day before it will take effect.
- 2.2 Changes to a sailing instruction may be made on the water by contacting the specific class(s) affected by VHF notifying of the change.

3 COMMUNICATIONS WITH COMPETITORS

- 3.1 3.1 Notices to competitors will be posted on the Regatta Network event Notice Board; https://www.regattanetwork.com/event/24550#_newsroom
- 3.2 On the water, the race committee intends to monitor and communicate with competitors on VHF radio channel 69.
- 3.3 The following communications ***may*** be made by the race committee on VHF.
 - Race Course to be sailed
 - General Race Committee intentions

- 3.4 **Boats are encouraged to monitor VHF radio channel 13, “Bridge to Bridge”, while transiting the Galveston channel to remain aware of potential commercial traffic.**
- 3.5 [DP] While racing, except in an emergency, a boat shall not make voice or data transmissions and shall not receive voice or data communication that is not available to all boats.
- 3.6 The use of of a tracking program (like RaceQs or Yellowbrick) may be used for post-race evaluation only.

4 CODE OF CONDUCT

- 4.1 [DP] Competitors and support persons shall comply with reasonable requests from race officials.
- 4.2 [DP] Competitors and support persons shall handle any equipment provided by the organizing authority with care, seamanship, in accordance with any instructions for its use and without interfering with its functionality.

5 SIGNALS MADE ASHORE

- 5.1 Signals made ashore will be displayed via the Regatta Network event Notice Board; https://www.regattanetwork.com/event/24550#_newsroom
- 5.2 In the event of signals made ashore, the Race Committee ***may*** also notify participants via SMS text message to the number provided at registration.

6 SCHEDULE OF RACES

- 6.1 Schedule

Date	Time	Event
Friday, May 21	19:00est,	Competitors briefing, in-person at the GBCA clubhouse, in conjunction with RR#1 social.
Friday, June 3 rd	14:00	First Warning signal
Sunday, June 5 th	16:00	Time limit expires
Saturday, June 18 th	19:00 est.	Awards presentation at Rum Race #2 social.

- 6.2 To alert boats that a race or sequence of races will begin soon, the orange starting line flag will be displayed with one sound at least five minutes before a warning signal is made.

7 CLASS FLAGS

7.1 The class flags are as follows:

ORC Spin	Purple
Non-Spin	Green
Multi-Hull	Red

8 RACING AREA

8.1 SI Addendum #1 shows the location of the racing area.

9 COURSES

9.1 The diagram(s) in SI Addendum #2 show(s) the course(s), including the approximate bearings, the order in which marks are to be passed, approximate distance, and the side on which each mark is to be left.

10 MARKS

10.1 The following fixed marks may be used:

- HSC 11 - 29° 20.530N 94° 44.470W
- HSC 5A - 29° 19.639N 94° 41.272W
- Arena 102-1 - 29° 07.817N 94° 32.008W
- "Buccaneer"- FR-TX-42 - 28° 52.138N 94° 41.868W
- TABS B - 28° 58.938N 94° 53.943W
- TABS F - 28° 50.482N 94° 14.467W

11 OBSTRUCTIONS

11.1 Any commercial traffic encountered while transiting the Galveston Channel shall be treated as an obstruction. At no time does a vessel racing have right of way over commercial traffic. Any disruption of commercial traffic will be subject to disqualification without a hearing and Board review of participation in future GBCA events. This changes RRS 60.1 & 60.2.

12 THE START

12.1 Races will be started using RRS 26 with the warning signal made 5 minutes before the starting signal.

12.2 The starting line is between a staff displaying an orange flag on the shore at the starboard end, and HSC #11 as the port-end starting mark.

- 12.3 Boats whose warning signal has not been made shall avoid the starting area during the starting sequence for other races.
- 12.4 If any part of a boat's hull is on the course side of the starting line at her starting signal and she is identified, the race committee may attempt to hail her sail number. Failure to hail her number, failure of her to hear such a hail, or the order in which boats are hailed will not be grounds for a request for redress. This changes RRS 62.1(a).
- 12.5 A boat that does not start within 10 minutes after her starting signal will be scored Did Not Start without a hearing. This changes RRS A5.1 and A5.2.

13 THE FINISH

- 13.1 The finishing line is between a staff displaying an orange flag on shore and HSC #11 as a finishing mark.
- 13.2 As a boat is approaching within 1 nm of channel marker #5A, she shall call the race committee at 713-591-8115 and give notice of their position.
- 13.3 If the race committee is absent when a boat finishes, she shall report her finishing time to the race committee at the first reasonable opportunity.

14 PENALTY SYSTEM

- 14.1 The first two sentences of RRS 44.1 are changed to:

A boat may take a One-Turn Penalty when she may have broken one or more rules of Part 2 or Rule 31 in an incident while racing. However, when she may have broken one or more rules of Part 2 while in the zone around a mark other than a starting mark, her penalty shall be a Two-Turns Penalty.
- 14.2 Alternatively, a boat may accept a Scoring Penalty as described in RRS 44.3. The Scoring Penalty shall be 20% of the boats entered unless the incident occurred within the zone of any mark, in which case the scoring penalty shall be 40% of the boats entered.

15 HEARING REQUESTS

- 15.1 The protest time limit is one hour after the protesting boat is *Finished*.
- 15.2 Any boats planning on filing a hearing request shall notify the Race Committee via VHF radio or cellphone prior to leaving the finish area.
- 15.3 Paper hearing request forms are available from the GBCA clubhouse, however electronic filings using the US Sailing app are preferred by the protest committee. Please forward all filings to may.chris.w@gmail.com.
- 15.4 The protest committee will endeavour to post the notice of protests and the hearing schedule within 30 minutes after the time limit for racing expires. Notices and schedules will be posted using the Regatta Network official notice board at:
https://www.regattanetwork.com/event/24550#_newsroom

- 15.5 Notices of protests by the race committee, or protest committee will be posted to inform boats under RRS 61.1(b).
- 15.6 Breaches of Sailing Instructions 3.3, 6.2, 16.3, and 18 will not be grounds for a protest or request for redress by a boat. This changes RRS 60.1(a)
- 15.7 RRS 62.2(a) and 66.2(a) do not apply.
- 15.8 The US Sailing prescription to RRS 63.2 does not apply.

16 SCORING

- 16.1 One race is required to be completed to constitute a regatta.
- 16.2 A boat's regatta score is the total of her race scores without exclusion. This changes RRS A2.1.
- 16.3 ORC boats will be scored Time on Time using the appropriate Triple Number data per each boat's certificate. The appropriate Triple Number (All-purpose, Windward/Leeward, Predom. Upwind, Predom. Downwind) will be determined at the Race Committee's discretion by observance of the prevailing conditions over the course of the race. Prior to the warning signal for the ORC class, Race Committee will announce via VHF their intended Triple Number to be used. Race committee reserves the right to change the announced Triple Number based on observations of conditions across the Racing Area during the race.
- 16.4 PHRF and Cruising Club Handicap classes will be scored using Time on Time with the following conversion formula: $TCF=650/(550+x)$, where x equals PHRF or Cruising Club Handicap.

17 SAFETY REGULATIONS

- 17.1 Prior to the first warning signal, each boat is required to check in via respective VHF channel.
- 17.2 All boats shall have a mechanical propulsion system that is quickly available, with sufficient fuel, and capable of providing range under power of at least 75 miles.
- 17.3 All boats shall have an operative VHF/FM transceiver with Channels 9,16,13,68,71, and 72.
- 17.4 [DP] A boat that retires from a race shall notify the race committee at the first reasonable opportunity by VHF or cell phone.
- 17.5 Contacts for Race Committee: Chris May 713-591-8115

18 TRASH DISPOSAL

- 18.1 Trash shall be properly disposed of when a vessel returns to shore.

19 PRIZES

19.1 Prizes will be given for 1st through 3rd places in each class based on number of entries as follows:

- 3 entries – 1st Place
- 6 entries – 1st, 2nd Place
- 9+ entries – 1st, 2nd, and 3rd Place, etc.

19.2

19.3 The GBCA Offshore is the second of three events of the **Texas Offshore Racing Circuit (TORC)**. The results of the GBCA Offshore count twice in the calculation of the overall series results.

- The winner of the ORC Spinnaker class shall be awarded the **Marion Hayes Memorial** perpetual trophy.
- **Texas Navy Trophy**. Boats sailing in the ORC Spinnaker Class will be eligible to compete for the TORC championship trophy, the Texas Navy trophy, if they have entered all three TORC regattas in the same class.
- **S. Rhodes Fisher Trophy**. Boats sailing in the PHRF Non-Spinnaker class will be eligible for the S. Rhodes Fisher Trophy, if they have entered all three TORC regattas in the same class.

20 RISK STATEMENT

20.1 RRS 3 states: 'The responsibility for a boat's decision to participate in a race or to continue to race is hers alone.' By participating in this event each competitor agrees and acknowledges that sailing is a potentially dangerous activity with inherent risks. These risks include strong winds and rough seas, sudden changes in weather, failure of equipment, boat handling errors, poor seamanship by other boats, loss of balance on an unstable platform and fatigue resulting in increased risk of injury. **Inherent in the sport of sailing is the risk of permanent, catastrophic injury or death by drowning, trauma, hypothermia or other causes.**

21 INSURANCE

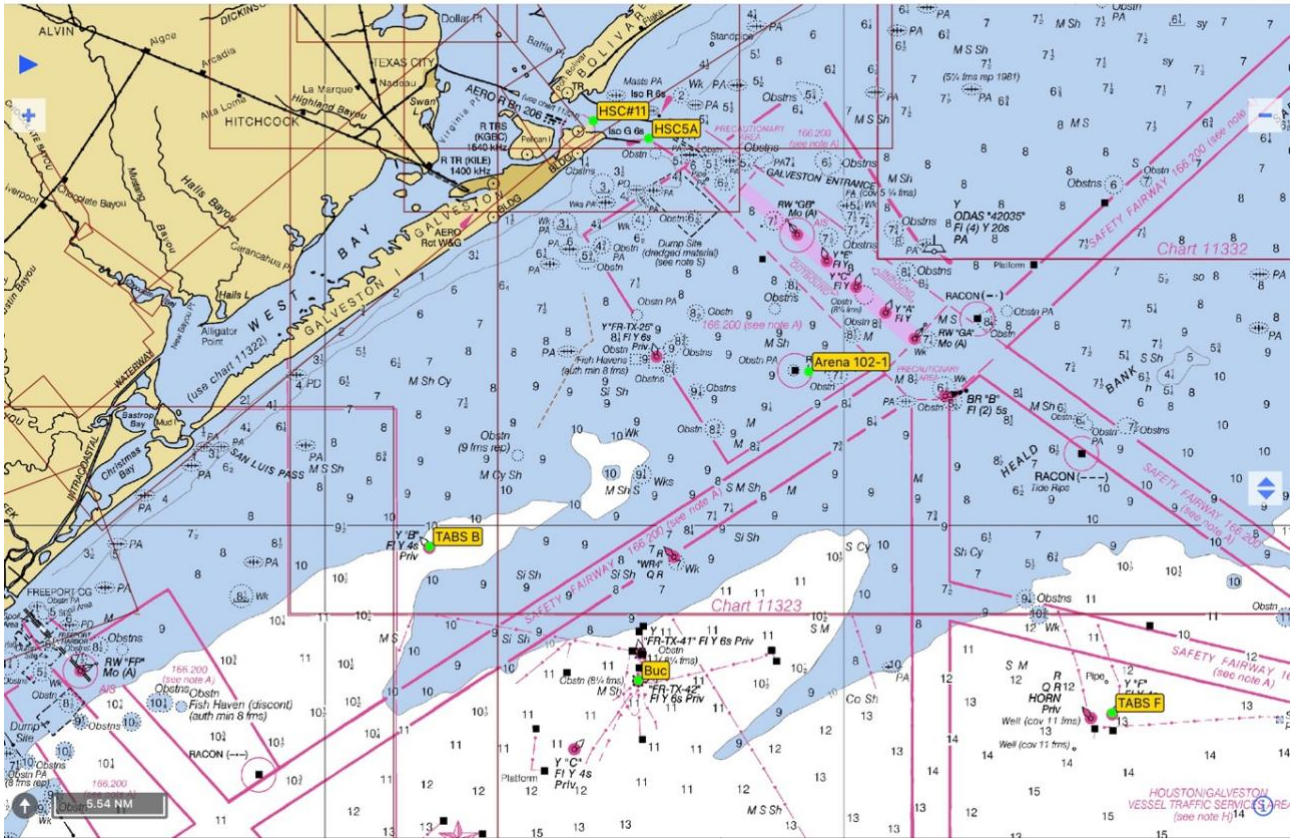
21.1 Each participating boat shall be insured with valid third-party liability insurance with a minimum cover of \$300,000 per incident or the equivalent.

SI ADDENDUM #1

Race Area

Charts

11300_1 Galveston To Rio Grande

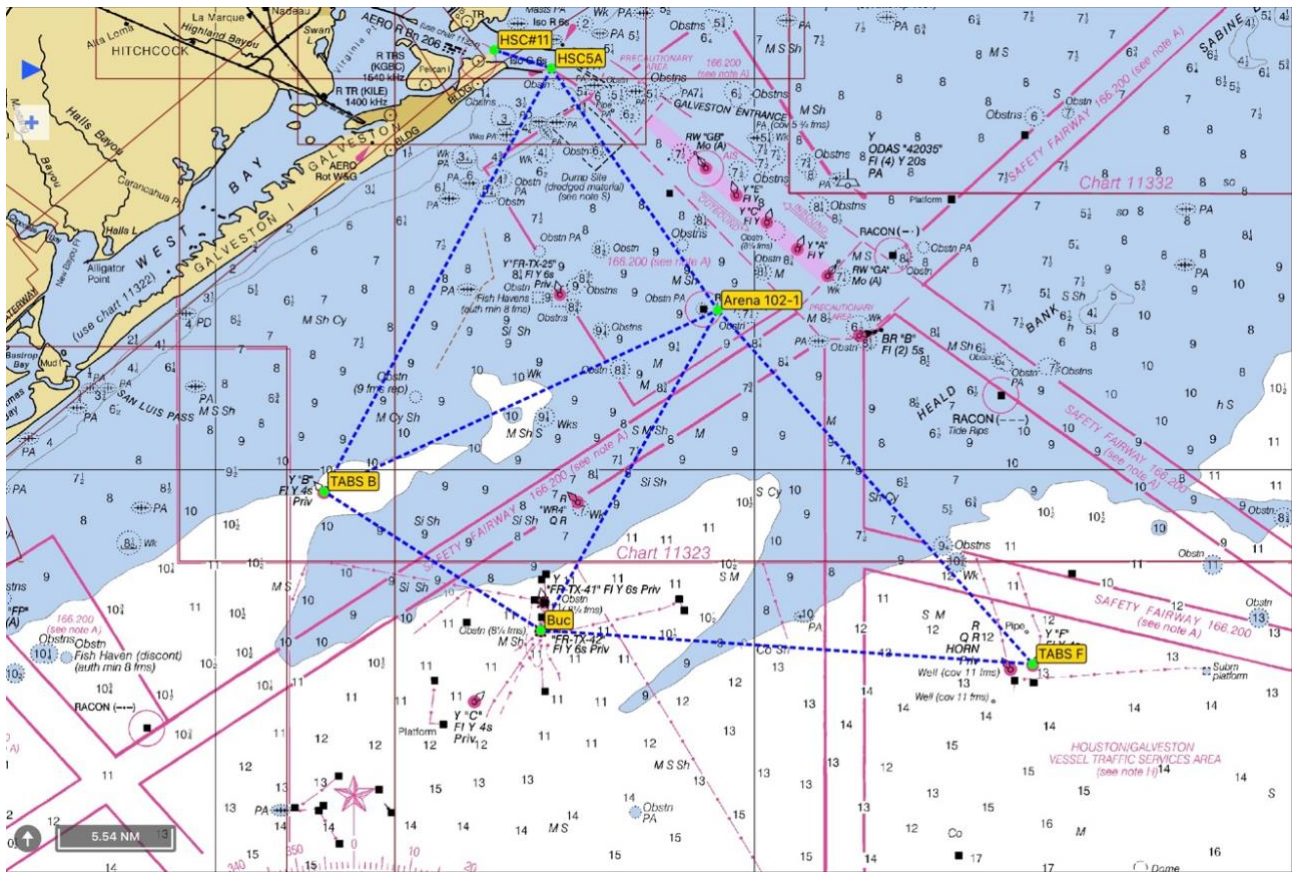


SI Addendum #2

Courses

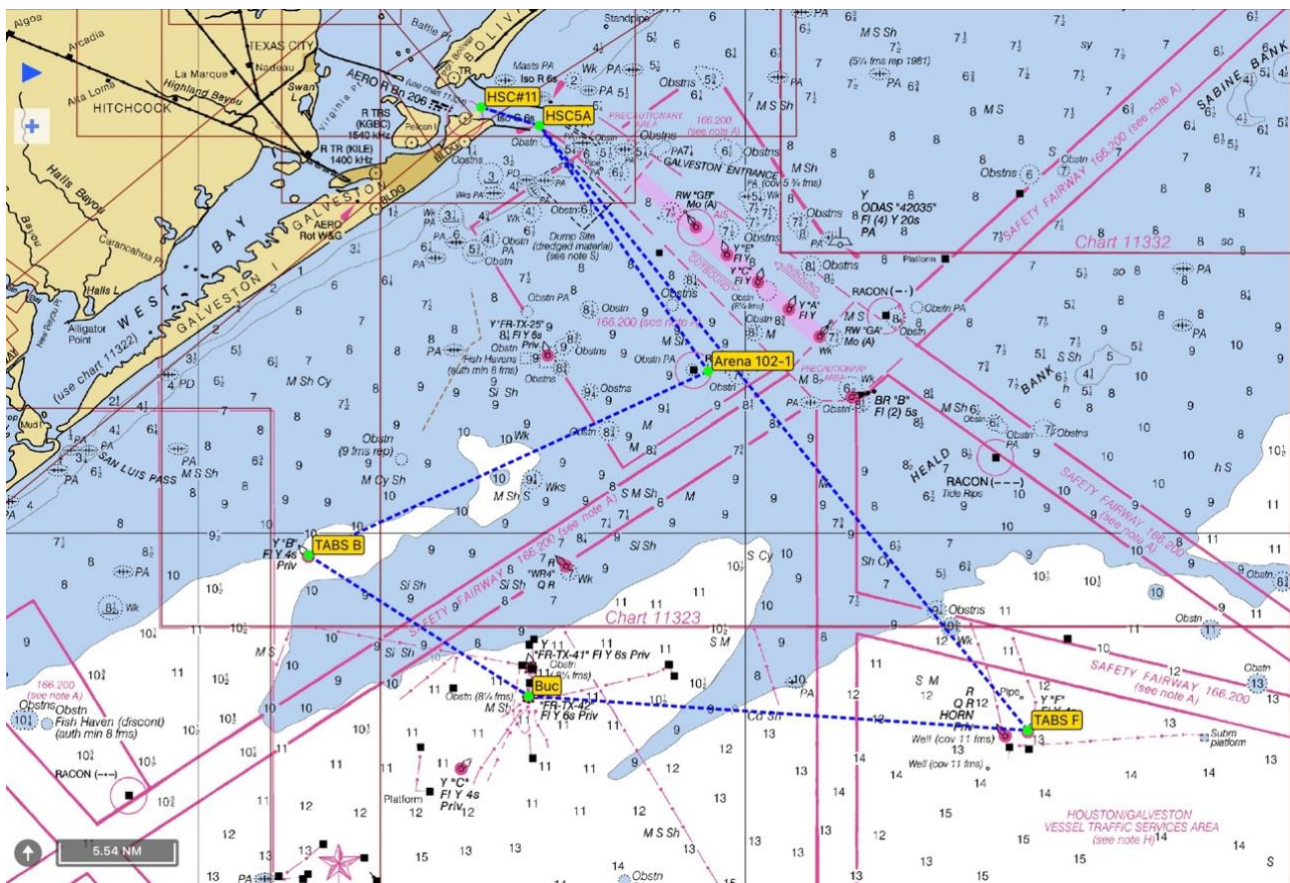
Course 1

Mark	Est. Bearing	Distance	Leave Mark to:
Start/Finish			
HSC 5A	108	2.93nm	Starboard
Arena 102-1	146	14.32nm	Starboard
Buccaneer	209	17.89nm	Starboard
TABS B	303	12.57nm	Starboard
Arena 102-1	065	21.13nm	Starboard
TABS F	138	23.15nm	Starboard
Buccaneer	274	24.06nm	Starboard
TABS B	303	12.57nm	Starboard
HSC 5A	028	23.47nm	Port
Start/Finish	288	2.93nm	
	Total Dist	155.02nm	



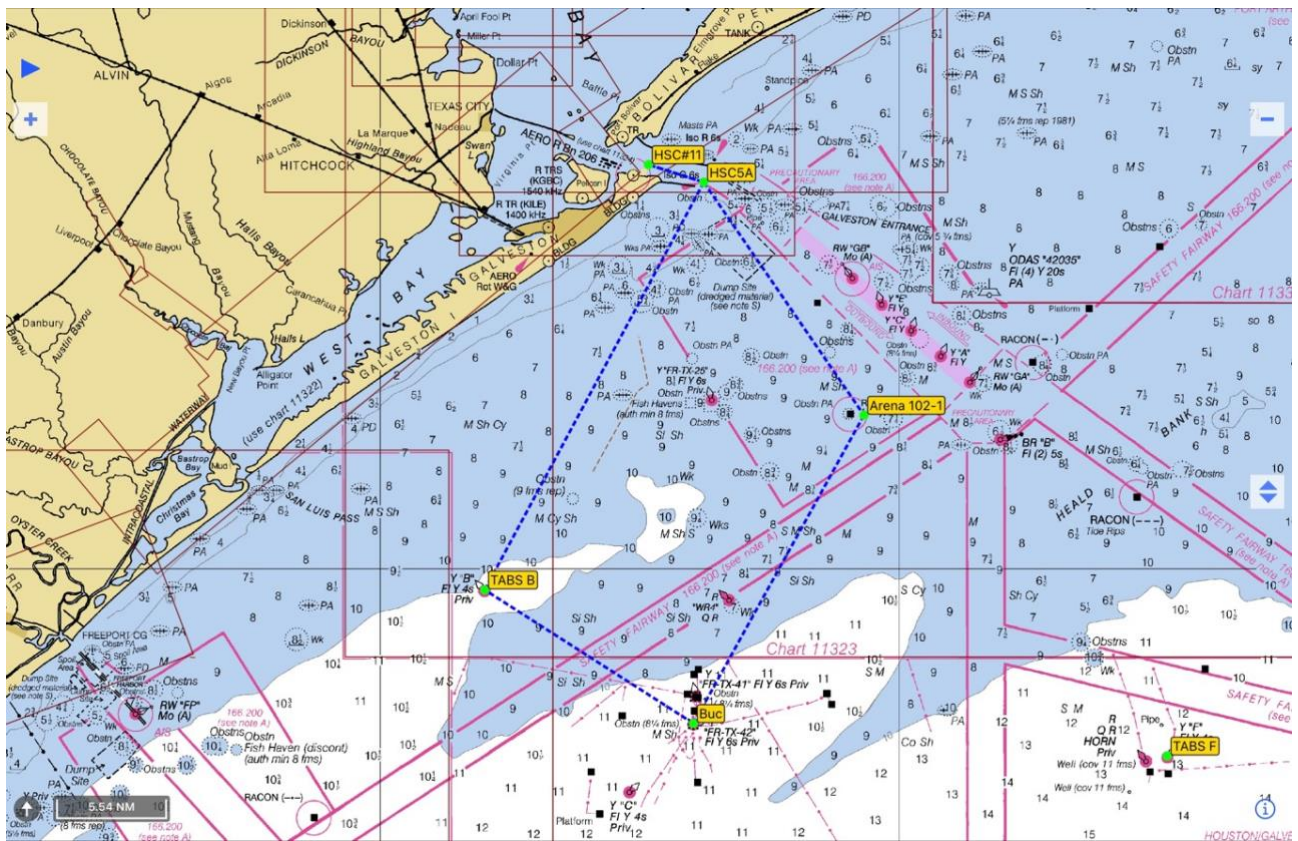
Course 2

Mark	Est. Bearing	Distance	Leave Mark to:
Start/Finish			
HSC 5A	108	2.93nm	Starboard
Arena 102-1	146	14.32nm	Starboard
TABS B	245	21.13nm	Port
Buccaneer	123	12.57nm	Starboard
TABS F	094	24.06nm	Port
HSC 5A	321	37.40nm	Port
Finish	288	2.93nm	
	Total Dist	115.34nm	



Course 3

Mark	Est. Bearing	Distance	Leave Mark to:
Start/Finish			
HSC 5A	108	2.93nm	Starboard
Arena 102-1	146	14.32nm	Starboard
Buccaneer	209	17.89nm	Starboard
TABS B	303	12.57nm	Starboard
HSC 5A	028	23.47nm	Port
Finish	288	2.93nm	
	Total Dist	74.11nm	



Thank you to our 2022 Sponsors!

GBCA 2022 SPONSORS



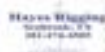
CRUZAN RUM



GOLD SPONSORS



SILVER SPONSORS



BRONZE SPONSORS



Waterline Weeks Inc.



C+C SAILMAKERS