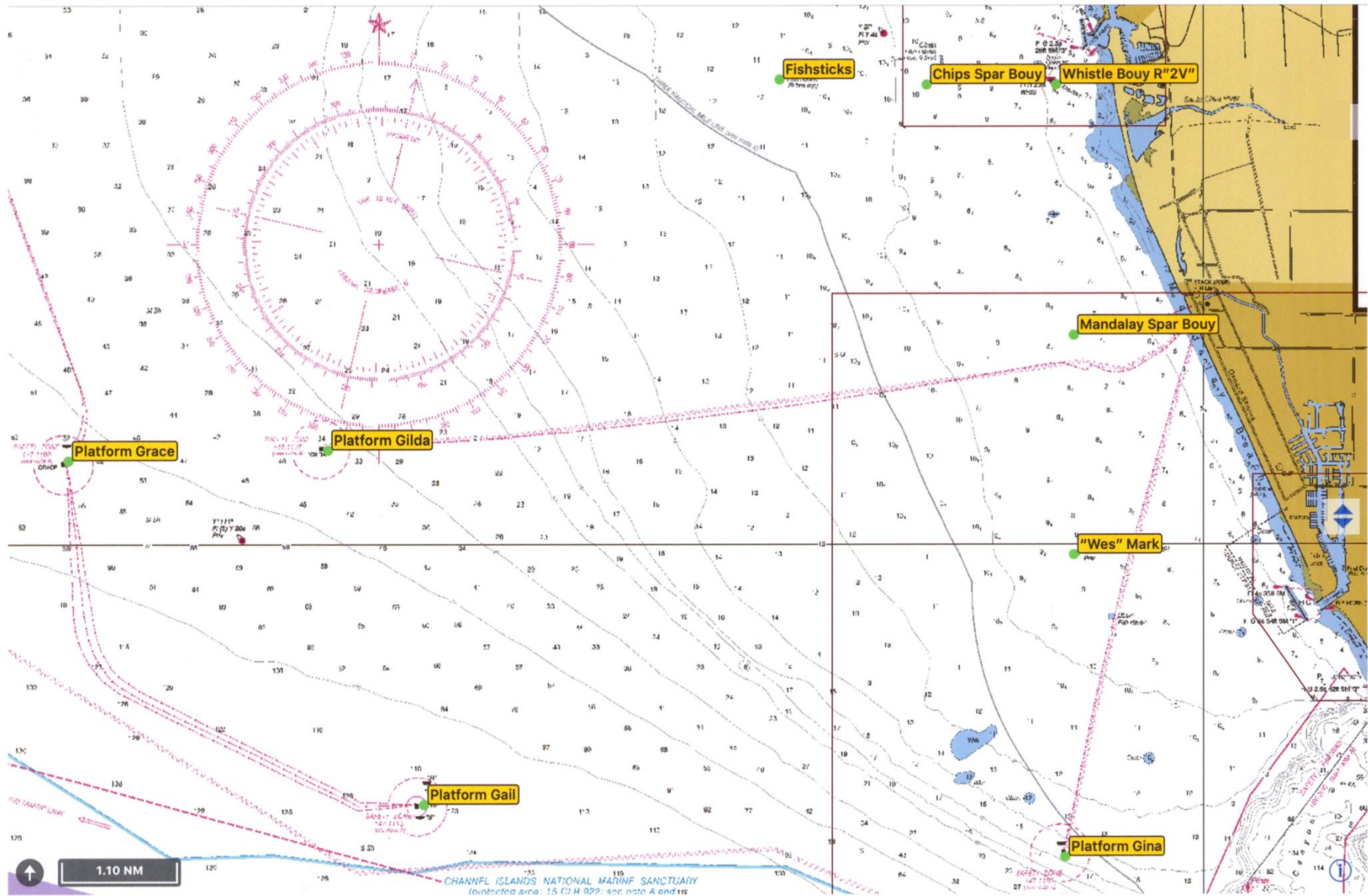




VYC Coastal Course Chart



Chartlet taken from NOAA 18725_1 Port Hueneme To Santa Barbara Not to be used for Navigation



Course 1 - 8 use an inflatable mark

#	Course	Approx. Heading	M start	R2 start
1	S Wp Mp R2s F	To be posted on R/C signal boat		
2	S Wp Ms R2s F			
3	S Wp Mp As F			
4	S Wp Ms As F			
5	S Wp Mp R2p Cp F			
6	S Wp Ms R2p Cp F			
7	S Wp Mp R2p Ap F			
8	S Wp Ms R2p Ap F			
9	S Bs R2s Ms R2s F	164	11.85	14.33
10	S Bs G1s R2s F	164	18.64	21.12
11	S Bs Mp G2s F	164	19.97	22.45
12	S Bs G4s F	164	22.44	24.92
13	S Bs R2s F	165	6.94	9.42
14	S Bs As F	165	10.34	12.82
15	S G3s As F	165	15.88	18.36
16	S G3s R2s F	167	12.79	15.27
17	S G3s Bs G3s R2s F	167	18.65	21.13
18	S G3s Cp Ap R2p Ap F	167	21.90	24.38
19	S G3s Ms G3s R2s F	167	22.76	25.24
20	S G3s G1s R2p Ap F	167	26.32	28.80
21	S G3s R2s G3s R2s F	167	27.72	30.20
22	S G1s R2s F	220	17.57	19.10
23	S G1s Cp Ap F	220	20.81	22.34
24	S G1s As Cs As F	220	21.36	22.89
25	S G1s R2p Ap F	220	22.73	24.26
26	S G1p G3p G1s R2s F	220	30.37	31.81
27	S G2s Mp R2s F	247	17.76	18.33
28	S G2s Cp Ap F	247	18.81	19.38
29	S G2s R2p Ap F	247	20.95	21.52
30	S G4s F	249	20.40	20.79
31	S G4s Cp Ap F	249	23.34	23.73
32	S G4s G2s G4s F	249	25.72	26.11
33	S G2s F	250	15.85	16.42
34	S Ap G4p F	298	22.12	20.98
35	S Ap Ms G2s F	298	23.27	22.13
36	S Ap Ms G4s F	298	27.82	26.68
37	S Ap G3p R2s F	298	19.46	18.32
38	S As F	300	6.64	5.50
39	S As R2p Cp F	300	9.08	7.95
40	S As Mp R2s F	300	10.21	9.07
41	S As R2p As F	300	11.78	10.64
42	S As Bp R2s F	300	13.94	12.80
43	S As Mp R2p As F	300	15.37	14.23
44	S R2p G2p F	341	18.87	N/A
45	S SCp R2s F	225	34.9	
46	S PRp R2s F	233	47.6	
47	S FRYs F			

MARKS		APPROXIMATE LOCATION	
A	Fish Sticks spar buoy	L: 34° 14.45'N	Lo: 119° 19.85'W
B	"Wes" Mark	L: 34° 09.9'N	Lo: 119° 16.5'W
C	Chips spar buoy	L: 34° 14.444'N	Lo: 119° 18.225'W
M	Mandalay spar buoy	L: 34° 12.0'N	Lo: 119° 16.483'W
R2	Whistle buoy R"2V"	L: 34° 14.4'N	Lo: 119° 16.7'W
F	Finish at Ventura Harbor	L: 34° 14.745'N	Lo: 119° 16.325'W
G1	Platform Gail	L: 34° 07.5'N	Lo: 119° 24.0'W
G2	Platform Gilda	L: 34° 10.9'N	Lo: 119° 25.1'W
G3	Platform Gina	L: 34° 07.0'N	Lo: 119° 16.6'W
G4	Platform Grace	L: 34° 10.8'N	Lo: 119° 28.1'W
SC	SCorpion Anch buoys (2)	L: 34° 02.98'N	Lo: 119° 33.32'W
PR	PRisoners Hbr buoy	L: 34° 01.25'N	Lo: 119° 41.12'W
W	Inflatable Buoy	.05 miles from M mark	