

THE 2022 ANNUAL PORT ARTHUR TWO-STEP REGATTA SAILING INSTRUCTIONS



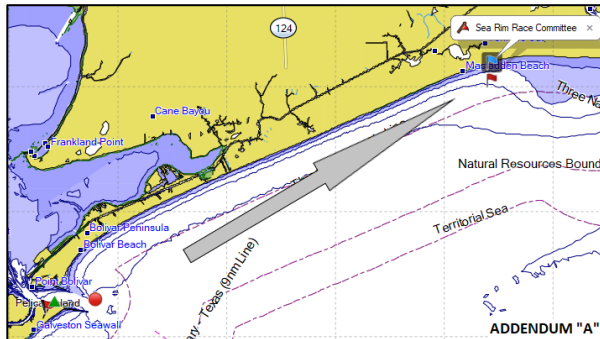
Organizing Authority: The Houston Yacht Club and Port Arthur Yacht Club
To be sailed 27 May and 29 May 2022

1. RULES - Racing will be governed by:

- 1.1. The current Racing Rules of Sailing (RRS), except as may be modified herein and/or by the Sailing Instructions. If there is one-design racing and there is a conflict between Class Rules and the RRS, Class Rules shall apply.
- 1.2. Boats equipped and rated with power winches may use same. This modifies RRS 52.
- 1.3. Boats sailing Single or Double-handed may use autopilots. This modifies RRS 52. Use of autopilots is permitted when more than 500 yards from the start line and up to 500 yards from the finish line. This changes Rule 52.
- 1.4. RRS 41 is hereby modified to allow Single or Double-handed entrants to communicate amongst themselves by VHF Radio.
- 1.5. Between the hours of sunset and sunrise, the rules of Part 2 are replaced with the International Regulations for Preventing Collisions at Sea (IRPCAS).
- 1.6. The US SAILING Prescriptions to the RRS will apply.
- 1.7. Current multihull regulations as administered by TOMA of Galveston Bay apply.
- 1.8. The current US Sailing Safety Equipment Requirements (USSER). These requirements are available at <https://www.ussailing.org/competition/offshore/safety-information/ser-world-sailing-special-regulations/>. A copy of these requirements should be kept aboard while racing. In the event of a conflict between these requirements and applicable class rules, the class rules shall apply.
- 1.9. Each boat shall carry an operating VHF radio capable of transmitting and receiving on Channels 13, 14, 16, 68, 72 and a cell phone, the number of which shall be on file with the Race Committee (via your registration).
- 1.10. All races will feature a two-hour starting window start. Finish times will be captured, elapsed times will be calculated, and handicaps will be applied to determine the winner.
- 1.11. Appendix T1 will apply.
- 1.12. Appendix T1.b is modified to read: "A Post-Race Penalty is a 20% Scoring Penalty calculated as stated in rule 44.3(c) if taken before the protest time limit expires. Otherwise, a Post-Race Penalty is a 30% Scoring Penalty calculated as stated in rule 44.3(c). However, rule 44.1(a) applies."
- 1.13. US SAILING Prescription to the RRS Appendix V Rules V1 and V2 will apply.
- 1.2. US SAILING Prescription to the RRS Appendix V Rule V2 is modified to read: "After a race, a boat that may have broken one or more rules of Part 2 or rule 31 in an incident while racing may take a Post-Race Penalty for that incident. A boat takes the penalty by delivering a written notice to the race office that identifies the race number and when and where the incident occurred. The penalty shall be a 20% Scoring Penalty, calculated as stated in rule 44.3(c) if taken before the protest time limit expires. Otherwise a 30% Scoring Penalty shall apply, calculated as stated in rule 44.3(c). However, rules 44.1(a) and (b) apply, and the penalty shall not be taken after a protest hearing involving the incident has begun.

2. NOTICES TO COMPETITORS

- 2.1. Notices to competitors will be sent to all competitors e-mail address as entered at registration on RegattaNetwork.
- 2.2. Notices to competitors will be broadcast via VHF at the start line, finish line, or announced at the official regatta party in Port Arthur as appropriate.



3. CHANGES TO SAILING INSTRUCTIONS

- 3.1. Any written changes to these sailing instructions will be distributed by e-mail no later than 9:00 a.m. Thursday 26 May.
- 3.2. Verbal changes may be made on the water and shall be communicated to each boat by VHF before they choose to start within the Starting Window.

4. SIGNALS MADE ASHORE

- 4.1. Any decision to abandon race will be announced via cell phone call to the number on record.
- 4.2. Any decision to postpone will be announced via cell phone call to the number on record.

5. SCHEDULE OF RACES

- 5.1. **Starting Window:** On Friday the Starting Window will be open between 8:00 am and 10:00 am in the Galveston Jetty area. On Sunday the Starting Window will be open between 11:00 am and 1:00 pm in the Gulf of Mexico off Sea Rim State Park
- 5.2. Each class will sail a single race each day.

6. RACING AREA

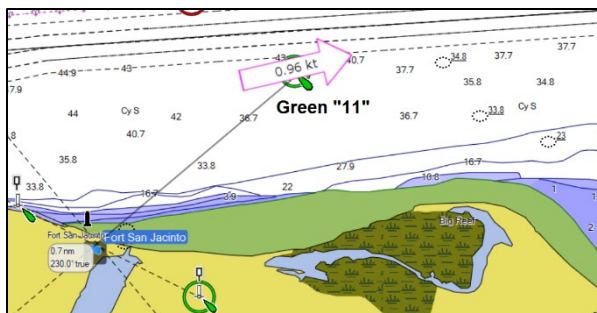
- 6.1. Addendum A shows the location of the racing areas.

7. THE COURSES

- 7.1. The diagram in **Addendum A** shows the course. On Friday, start at Green 11, sail to the end of the jetties and then a straight line between Galveston Red 6, the virtual mark at Sea Rim State Park. Sunday we sail back along the same route.
- 7.2. The courses will be **40.7** nautical miles in length.
- 7.3. On the return race, please do not set your GPS on the Galveston green 11 mark, as you must first round red 6 to safely enter the jetties.

8. MARKS

- 8.1. The starting line on Friday (and finish line on Sunday), is between the Bolivar Roads channel marker green 11 at the port end and an orange flag or banner mounted on Fort San Jacinto off your starboard quarter (bearing 230°). Fort San Jacinto is a concrete gun emplacement located at the East end of Seawall Boulevard. On the Sunday finish leg, Green 11 will be to starboard and Fort San Jacinto will be to port – bearing 230°.
- 8.2. In the absence of the Race Committee, competitors will be crossing the start /



finish lines when they look back at Fort San Jacinto at exactly 230°.

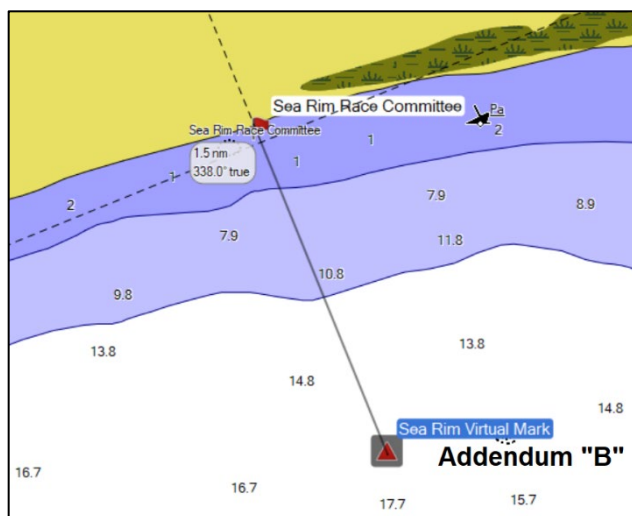
TABLE 1: USEFUL VECTORS, LOOK-BACK ANGLES, AND COORDINATES					
	Mark	Description	Coordinates	Bearing	From
Fri.	Galveston Start	Fort San Jacinto*	N29° 20.060' W94° 45.080'	230°	Green "11"
	Sea Rim Finish	The "virtual mark"	N29° 38.954' W94° 01.980'	338°	Virtual Mark
Sun.	Sea Rim Start	The "virtual mark"	N29° 38.954' W94° 01.980'	338°	Virtual Mark
	Galveston Finish	Fort San Jacinto*	N29° 20.060' W94° 45.080'	230°	Green "11"

* Do not navigate to Ft. San Jacinto which is a concrete gun emplacement on a bluff surrounded by shallow water and many sharp rocks. Coordinates provided for reference only.

- 8.3. The finish line on Friday and start line on Sunday is a line between a distant gas platform and a large orange tarp on the beach at Sea Rim State Park. The bearing will be 338° between your boat and the tarp on the beach. Please set your GPS for the "virtual mark" described in Table 1, above.

9. THE START / FINISH

- 9.1. At check in both days, all boats are to hail the race committee and check in by name and sail number via VHF. Please include the total number of souls on board including the skipper. All skippers are encouraged to send a list of crew names by email (or text message) to the race committee after all are aboard – accuracy is important.
- 9.2. Start times and finish times will be captured by the Race Committee. For both days racers are to start at a time of their choosing within the two-hour starting window. Starts made before the window opens, or after it closes will not be recorded by the Race Committee.
- 9.3. Official time is GPS time.
- 9.4. **Addendum B** illustrates the finish / start area at Sea Rim.
- 9.5. Please note that the **virtual mark** is located 1.5 nm off the beach in 15 feet of water. The purpose of this is so that the Race Committee can see your vessels' stem head as you cross the finish line.
- 9.6. All racers are encouraged to run over the virtual mark. This changes Rule 31
- 9.7. If conditions are such that the skipper feels the vessel is in danger at the virtual mark, you are to ignore the Start Finish Line description and instead simply cross the line bearing 338 degrees (the angle between the offshore platform and the Race Committee on the Sea Rim beach). This changes the RRS definition of "Rule".
- 9.8. At the finish, please check in with the Race Committee as you approach and announce your presence.



10. TIME LIMITS

- 10.1. The racing shall end at 2400 hours CDT, Friday 27 May and 2400 hours Sunday May 29 or when the last yacht finishes, whichever is earlier. Yachts which have not finished at the expiration of the time limit will be scored TLE without a hearing. This changes Rules 35, 63.1, A4 and A5.

11. PROTESTS

- 11.1. Protest forms are found in **Addendum C** to these Sailing Instructions. Completed forms are to be sent to the race Committee by email or text.
- 11.2. Competitors intending to file a protest must notify the race committee (via VHF or phone) at the first reasonable opportunity.
- 11.3. For each class, the protest deadline is 2400 hours, Sunday 29 May.
- 11.4. All notices and hearings will be negotiated with the parties involved on Monday 30 May.

12. SCORING

- 12.1. The Low-Point Scoring system, Appendix A, shall apply.
- 12.2. One race is required to be completed to constitute a series.
- 12.3. No scores shall be excluded. This changes rule A2

13. SAFETY REGULATIONS

- 13.1. Any yacht that starts, and then retires or withdraws before finishing the race shall notify the Race Committee on VHF or cell phone or if that is not possible the Houston Yacht Club office (phone number 281.471.1255).

14. COMMUNICATIONS

- 14.1. The official regatta channel shall be **VHF Channel 68**.
- 14.2. The Race Committee will also be available by telephone at 832.428.0785 (PRO)
All yachts are encouraged to monitor channel 16 when offshore and to communicate potential hazards to other racers.
- 14.3. All yachts are encouraged to monitor VHF channel 13 when in the Houston Ship Channel
- 14.4. The Event Chairman is available by email (billvanrav@gmail.com) and cell phone (832) 428-0785

15. PRIZES

- 15.1. Trophies will be awarded based on final registration volumes.
- 15.2. The race committee shall deliver owed trophies at a mutually agreeable time and place, at a later date.
- 15.3. Prizes will be awarded at the awards ceremony by the HYC pool, Monday May 30 at 1:00 pm.

16. INSURANCE

- 16.1. Each participating boat shall be insured with valid third-party liability insurance with a minimum cover of \$300,000 per incident or the equivalent.

17. USE OF ENGINES

- 17.1. Engines may be used in an emergency. After the emergency is resolved, competitors are to return to the closest point possible to where the engine was initially engaged and continue the race.
- 17.2. Engines may be used to charge batteries.

18. PROHIBITED EQUIPMENT

- 18.1. Use of a self-steering system is prohibited except as stated in section 1.2 and 1.3 above.

19. HANDICAPS

- 19.1. All TOMA Pursuit class yachts must be handicapped by the Texas Offshore Multihull Association.

ADDENDUM C: PROTEST FORM – NEXT PAGE



HEARING REQUEST

for **protests**, requests for **redress**, and **reopening**

FOR COMMITTEE USE

Time & date received _____

Rec'd by _____

Protest time limit _____

Filing # _____

Race # Day/Date of Race

Event/Series

--	--	--

Type of Hearing

Protest

Redress

Reopening

Boat or Committee Protesting or Requesting

Making allegation, claim, or request

Boat (sail # / name)

-OR- Committee

Represented by

Mobile

Email

Protestee(s) or Committee/Body

Alleged to have broken a rule, or made an improper action or omission

Boat (sail # / name)

Boat (sail # / name)

Boat (sail # / name)

Boat (sail # / name)

-OR- Committee/Body

For a protest only, informing the protestee How did you inform the other boat of your intent to protest?

If "Yes" when (for each)?

By hailing?

No Yes

Words used?

By displaying a red flag?

No Yes

Some other way?

No Yes

Where / how?

The incident

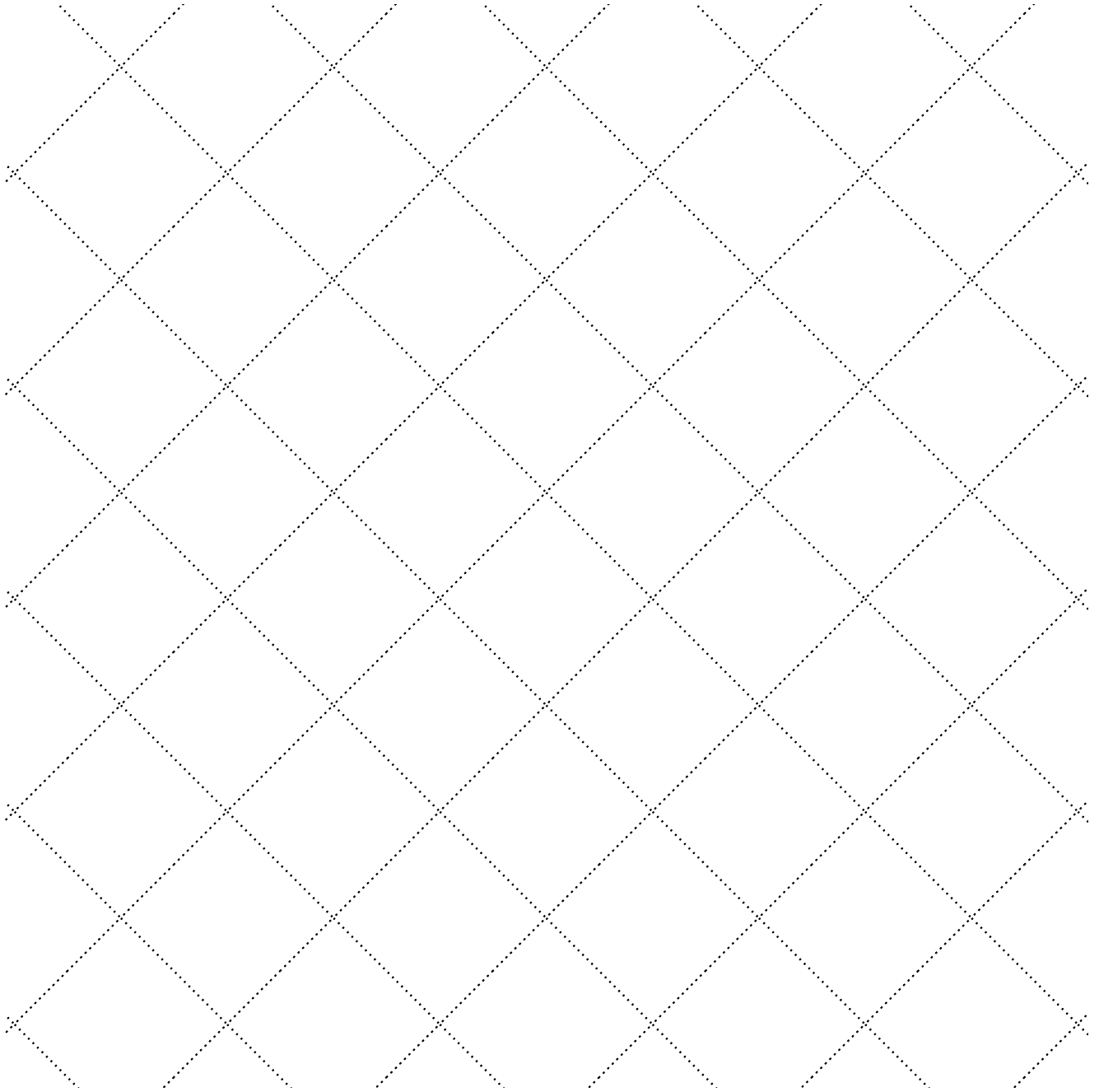
For a protest: When and where did it happen? (e.g. 1/2 way along first upwind leg, pre-start just below pin, etc.)

For protests, please describe the incident. For redress or reopening, please state the reasons.

Rules alleged to have been broken

For either a protest or a request for redress or reopening (if relevant)

Diagram Include wind and current (**or** continue the description of the incident and/or reasons)



Witnesses Please list by name

USE ONLY TO WITHDRAW FILING

I request to withdraw this filing _____
Signature of representative

Print name

Filing withdrawal approved _____
Signature of PC member

Print name