



2022 Montana Sailing Championships & Montana Cup Regatta Pacific Northwest Thistle Class Districts

North Flathead Yacht Club is pleased to announce the 45th Annual Montana Cup Regatta and the 2022 Pacific Northwest Thistle Class Districts. Come enjoy two days of racing and camaraderie at one of the best places to sail in the Northwest. We will have dinner and live music featuring Fetviet Brothers on the lawn Saturday Evening, lawn games, breakfast on Saturday and Sunday, and stories by the fire.

Once again, in addition to the PHRF and One Design Fleets, we will be having a Cruising Fleet which will race in one long distance race each day. For those who have participated the last couple years, they have found it to be a wonderful weekend of laid back racing.

The Montana Cup Regatta & State Sailing Championships was established by the Canyon Ferry Yacht Club in 1977 for the purpose of promoting and recognizing team racing in Montana, the Regatta now draws competitors from across the State & the Greater Pacific Northwest region.

North Flathead Yacht Club is committed to hosting a green regatta and we have some reusable utensils, but supply is limited; please bring your own dishes, cups and water bottles.

The Corinthian spirit is alive and well in Montana. Please do your part to be courteous to other racers, NFYC Race committee, and grounds. NFYC welcomes any volunteers from visiting clubs to help with race committee, and onshore tasks. If willing to volunteer please reach out to our VC of Racing Brian Lockwood nfycvice@gmail.com.

To get to the club from downtown Somers, turn south at Del's Bar and follow Leslie Avenue past the VFD and Classic Company Boatworks. Keep going through the gates –marked NFYC--and horsepasture. You'll find us hidden at the end of the road.

If you are transporting a boat from out of the area please ensure that it is thoroughly cleaned, drained, and dried, and be sure to stop at all watercraft check stations. Due to the heightened threat of Aquatic Invasive Species (AIS), visitors must now document AIS Inspection clearance as a prerequisite for Regatta Eligibility and use of NFYC launch and dock facilities. For questions, please refer to <https://fwp.mt.gov/conservation/aquatic-invasive-species>. The most convenient location to the club is Jesco Marine. DO NOT LAUNCH prior to showing proof of clearance.

Upon your arrival, please check in with Port Captain Jeffrey Fiftal, or his representative, for slip and trailer assignments, you may then be directed toward registration, the mast lift, the trailer extension, and an appropriate launch ramp.

On-site camping is encouraged during the Regatta, although a variety of accommodations can be found within a few minutes' drive. Club amenities include shaded picnic areas, covered grilling and dining areas, sinks, ice, Wi-Fi, fire pit, and restrooms with showers. If you plan to come early or stay late, which I strongly recommend, we will attempt to accommodate you and your boat. Pets are discouraged during this regatta.

I sincerely hope you will join us for a great weekend of racing in Northwest Montana. If you have any questions or are looking for a boat to crew on please feel free to reach out to me directly at nfycvice@gmail.com.

See you all very soon



**2022 Montana Sailing Championships &
Montana Cup Regatta
Pacific Northwest Thistle Class Districts**

August 5-7, 2022
North Flathead Yacht Club
Somers, Montana, USA

NOTICE OF RACE

Amended July 8, 2022

1. RULES

- 1.1. The event is governed by the rules as defined in *The Racing Rules of Sailing*.
- 1.2. The following prescriptions of *US Sailing* do not apply: RRS 63.1 and RRS 63.2.
- 1.3. An Aquatic Invasive Species (AIS) Inspection Certificate shall be obtained prior to launching at Flathead Lake. For more information, please refer to <https://fwp.mt.gov/conservation/aquatic-invasive-species>.

2. SAILING INSTRUCTIONS

- 2.1. The Sailing Instructions will be posted at least 24 hours prior to the event on the NFYC website at: <http://www.nfyc.org/> and will also be available at registration.

3. COMMUNICATION

- 3.1. The official notice board is located on the middle deck of the NFYC Clubhouse.
- 3.2. While racing, except in an emergency, a boat shall not make voice or data transmissions and shall not receive voice or data communication that is not available to all boats.

4. ELIGIBILITY AND ENTRY

- 4.1. The regatta is open to all boats of the Thistle class, all other boats sailing in a One-Design class of at least five (5) boats, boats sailing in the Cruising class, and boats with a valid PHRF rating.
- 4.2. The PHRF of the Northern Rockies handicap system applies to boats racing in the PHRF Classes. To obtain a rating contact Phil Healey at: Healey@montanasky.net.
- 4.3. Eligible boats may enter by registering at: https://www.regattanetwork.com/clubmgmt/applet_registration_form.php?regatta_id=24617, or by completing the form in NoR Addendum A and sending it, together with proof of insurance and the required fee.
- 4.4. Entries will not be accepted after 1900 on Friday, August 5, 2022.

5. FEES

- 5.1. Entry fees are as follows:

Postmarked or received prior to Friday, July 29, 2022	Small Crew – 2 Persons	\$120
	Thistle Class – 3 Persons	\$135
	Large Crew – 4 Persons	\$150
Post marked or received on or after Friday, July 29, 2022	Small Crew – 2 Persons	\$140
	Thistle Class – 3 Persons	\$155
	Large Crew – 4 Persons	\$170

- 5.2. The entry fee includes complimentary boat storage for the duration of the event, 1 meal ticket and beer cup per person, and breakfast on Saturday and Sunday.
- 5.3. Dinner tickets for additional persons for Saturday night are available for \$20 each.
- 5.4. Montana Cup T-Shirts will be available for pre-order and purchase at the event.

6. SCHEDULE

6.1. Registration and dates of racing for all classes:

Friday, August 5	Registration/Check In	1600 - 1800
	Competitor Meeting	1800
	Scheduled warning signal for Practice Race	1900
Saturday, August 6	Competitor Meeting	0700
	Scheduled warning signal for the first race	0800
	No warning signal will be made after	1600
	Regatta Dinner	1600 - 1900
Sunday, August 7	Scheduled warning signal for the first race	0730
	No warning signal will be made after	1300
	Awards Presentation	ASAP after racing

7. VENUE

7.1. NoR Addendum B shows the location of NFYC .

7.2. NoR Addendum C shows the location of the racing area on North Flathead Lake adjacent to NFYC.

8. COURSES

8.1. The courses to be sailed will be around marks set by the race committee and may include windward, leeward and reaching legs.

8.2. The regatta will include two (2) long distance courses for the Cruising Class(es).

9. SAFETY

9.1. A boat that retires from a race shall notify the race committee at the first reasonable opportunity.

10. SCORING

10.1. One (1) race is required to be completed to constitute a series and a maximum of twelve (12) races are scheduled for each class.

10.2. One-Design classes will be scored in order of finish.

10.3. PHRF and Cruising classes will be scored using Time-on-Time.

10.4. For the Thistle class, a boat's series score will be the total of her race scores (no excluded scores)

10.5. For all other classes:

10.5.1. When fewer than 5 races have been completed, a boat's series score will be the total of her race scores (no excluded scores).

10.5.2. When 5 or more races have been completed, a boat's series score will be the total of her race scores excluding her worst scores (one excluded scores).

11. BERTHING

11.1. [DP] Boats shall be kept in their assigned places while they are in the NFYC marina or grounds.

11.2. [DP] Unless prior arrangements have been made with NFYC, only boats and trailers participating in this regatta may park in NFYC designated areas.

12. PRIZES

12.1. Prizes will be awarded to the top three (3) boats based in each class.

12.2. The Montana Cup will be awarded per the Montana Cup Deed of Gift.

12.3. The Thistle District trophy will be awarded to the top placing Pacific Northwest Thistle.

13. DISCLAIMER OF LIABILITY & PERSONAL CONDUCT

- 13.1. Competitors participate in the regatta at their own risk. See RRS 3, Decision to Race. The organizing authority will not accept any liability for material damage or personal injury or death sustained in conjunction with or prior to, during, or after the regatta.
- 13.2. [DP] By participating in this regatta competitors, and their *support person(s)*, agree to accept the rules (RRS 4, Acceptance of the Rules). These include the *rules* published in the *Racing Rules of Sailing*, this Notice of Race, and the Sailing Instructions, including those related to safety, participation, and personal conduct. Competitors and any *Support Person* will accept full responsibility of their actions during any activity related to this event. This includes on-shore activities before, during, and after the regatta.

14. INSURANCE

- 14.1. [DP] Each participating boat shall be insured with valid third-party liability insurance with a minimum coverage of \$100,000. Proof of insurance may be required.

15. FURTHER INFORMATION

- 15.1. Club website: www.nfyc.org
- 15.2. Brian Lockwood, Vice Commodore of Racing, at nfycvice@gmail.com

ADDENDUM A



2022 Montana Sailing Championships & Pacific Northwest Thistle Class Districts Montana Cup Regatta Entry Form

Boat Name

Boat type

Sail Number

Helm person

Email

Address

City, State, Zip

Phone

Home Yacht Club

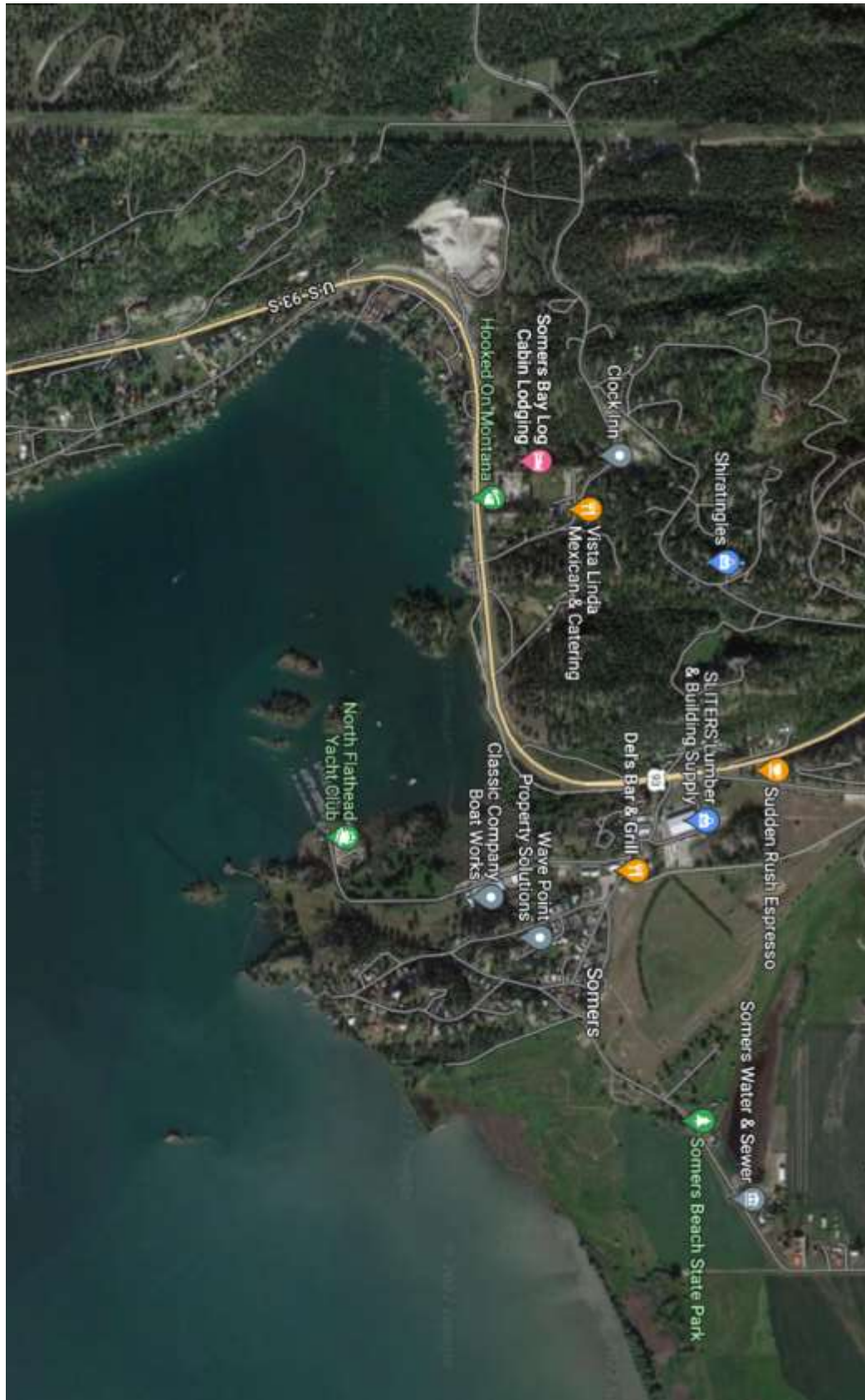
- I support NFYC's efforts to help prevent the spread of Aquatic Invasive Species (AIS) and agree to comply with pertinent State regulations. I understand that vessels traveling from outside the Flathead River Basin will be required to document AIS Inspection Clearance **prior** to use of NFYC launch and dock facilities and/or participation in the regatta. For questions, please refer to: <https://fwp.mt.gov/conservation/aquatic-invasive-species> .
- I agree to be bound by The Racing Rules of Sailing and all other rules that govern this event. I agree to hold the officers, employees and members of the organizing authority, and regatta sponsors, harmless from any liability related to this event.

Signature of boat owner: _____

	\$120	Includes two Saturday meal tickets, continental breakfast Saturday and Sunday and 2 beer cups for the weekend if received on or before Friday, July 29, 2022
	\$150	Includes four Saturday meal tickets, continental breakfast Saturday and Sunday and four beer cups if received before Friday, July 29, 2022.
	\$135	Thistle Class Entry Fee – Includes 3 Dinner Tickets, 3 Beer Cups, and Awards if received before July 29, 2022
	\$20	Late entry fee (entries received after Friday, July 29, 2022)
	\$20 ea	Additional Saturday Dinner Tickets
	\$	TOTAL

NOTICE: NFYC does **NOT** accept Credit Cards.
Cash or Check only.

ADDENDUM B



ADDENDUM C

