



2022 Wednesday Night Races

Amended 5/9/2022

Sailing Instructions

Galveston Bay Cruising Association

1500 Marina Bay Dr. Suite 1592, Building #113, Clear Lake Shores, TX 77565

I. Introduction and Rules

Wednesday Night Races are held on Clear Lake and consist of five series comprised of four races per series. Each series is followed by an “off-week” for awards. The intent of the Wednesday Night Races is fun, informal racing. Entry fees are nominal (compared to full regattas) and the operation is intended to be minimally staffed. Galveston Bay Cruising Association is the organizing authority of the series. The races are governed by the Racing Rules of Sailing 2021-2024, with the following exceptions:

- Start sequence is determined by the start board, but starts will be dictated by sound, not physical flag. This changes RRS Rule 26.
- The first two sentences of rule 44.1 are changed to: ‘A boat may take a One-Turn Penalty when she may have broken a rule of Part 2 or rule 31 while racing.’ Racers are reminded of the obligation to keep clear of other boats while doing so, and RRS 44.1 b “if the boat caused injury or serious damage or, despite taking a penalty, gained a significant advantage in the race or series by her breach her penalty shall be to retire.”

II. Registration and Fees

Series registration and notice board - <https://www.regattanetwork.com/event/24631>

All updates to the Sailing Instructions and schedule shall be announced at the notice board.

- Active GBCA Senior Members: The entry fee is \$100 for the full season of racing for all classes.
- Non-GBCA Senior Members: The entry fee is \$210 for the full season for all classes.
- The entry fee is \$50 for a single series for all classes.
- Single Race: The entry fee is \$20 for a single race for all classes

III. Communication with Competitors

Notices to competitors will be posted on the official notice board on the Regatta Network site:

<https://www.regattanetwork.com/event/24631>

Any changes to these sailing instructions will be made no later than 12:00 Noon on the day of scheduled racing. An attempt to give notice of changes **may** be made by email and/or text message to the information registered on Regatta Network. Failure to receive such notice shall not be grounds for protest or request for redress. This changes RRS 60.1.

Discussion regarding courses and race format can be made in our forums -

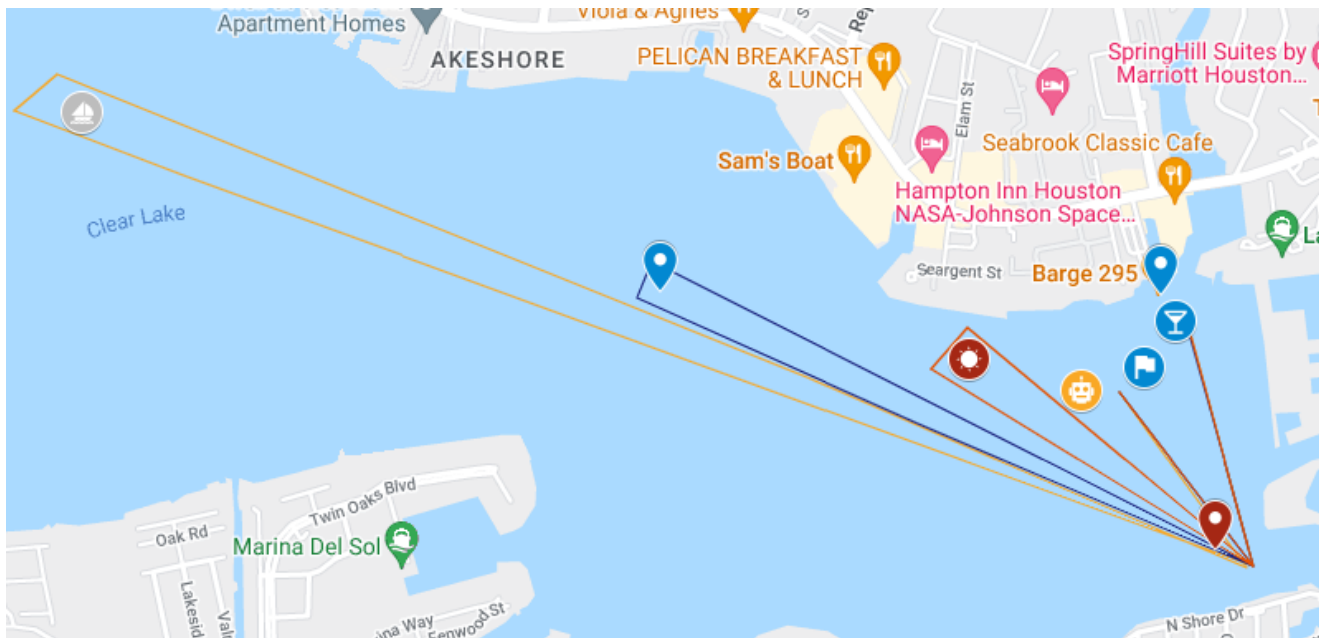
<http://discussion2.gbca.org/index.php/board,6.0.html>

IV. Schedule

The scheduled season is made up of 5 series of 4 nights of racing with a bye week after each series. One race may constitute a series. Canceled races may not be rescheduled. Cancellation may apply to only some classes. Cancellation may be for safety reasons, low water, non-competitive conditions, equipment failures, or any other reason or no reason, at the sole discretion of the Race Committee.

- Wednesday, March 30th 19:00 hours Skippers Meeting/Kick-off party at BARge
- Wednesday, April 6th 18:15 hours Series 1, Race 1, first warning signal.
- Wednesday, May 4th 19:00 hours Bye-week, no racing. Series awards at BARge.
- Wednesday, May 11th 18:15 hours Series 2, Race 1, first warning signal.
- Wednesday, June 8th 19:00 hours Bye-week, no racing. Series awards at BARge.
- Wednesday, June 15th 18:15 hours Series 3, Race 1, first warning signal.
- Wednesday, July 13th 19:00 hours Bye-week, no racing. Series awards at BARge.
- Wednesday, July 20th 18:15 hours Series 4, Race 1, first warning signal.
- Wednesday, August 17th 19:00 hours Bye-week, no racing. Series awards at BARge.
- Wednesday, August 24th 18:15 hours Series 5, Race 1, first warning signal.
- Wednesday, September 21st 19:00 hours End of Season awards at BARge.

V. Marks of the Course



<https://www.google.com/maps/d/u/0/edit?mid=1Qeav-Vhr42irDIH5-NgUkOE-8wXtJMNa&usp=sharing>



- Markbot. An orange and white autonomous boat ~1 meter in length. It will display all “flags” on a LED screen, and it will sound all start signals. Its location will vary based on wind direction, but will be approximately at:

- **Near N 29.55644, W 95.03461**



- “PVC Starting Pin”, a 2 inch pvc pipe located:
 - **N 29.55636, W 95.0364**
 - 900’ WSW of Barge295.



- “PVC Before the Shoal,” a 2 inch pvc pipe located:
 - **N 29.55816, W 95.04706**
 - 0.32 miles WSW of Sam’s Boat



- “Clear Creek Channel Buoy #14,” the red nun near the Kemah cut located
 - **N 29.55232, W 95.03262**
 - 0.1 miles W of Kemah Channel Entrance



- “Abandoned 26’ Sailboat.” This derelict boat has three anchors on it and may well be removed by Parks and Wildlife during the course of the season. If it is removed from the area, it will be temporarily replaced with an orange West Marine buoy or permanently replaced with a 2” pvc pipe. It is located near:
 - **N 29.56218, W 95.06206**
 - 1000’ SE of Clear Lake Park



- “PVC Finishing Pin,” a 2 inch pvc pipe, located:
 - **N 29.55747, W 95.03365**
 - 100’ South of Barge 295



- “Finish Flag at Barge 295,” A flag hanging off the top deck of Barge 295:
 - **N 29.55808, W 95.03407**
 - 2613 ½ E NASA Pkwy, Seabrook, TX 77586



- “Drop Mark” - Small round red ball to be used as a drop mark for new course #3. The location will vary depending on wind location, but it will be placed approximately .5 miles WNW of Clear Creek Channel Buoy #14.

VI. Start / Finish Line



The Start/Finish line will be between a fixed pvc mark (or small red round mark if pvc is missing) and mobile mark “Markus” pictured to the left. Markus will display the start sequence, race sequence countdown (in Green), sequence countdown (in Red), and start flags. In addition, Markus will sound a class theme song and horn signals. The starting line is between the base of the pvc (where it touches the water) and the 360 camera mounted on Markus.

If conditions are unsupportive for an autonomous vehicle, the start LED display, horn, and camera will be attached to “Meara,” a 26’ Shamrock.

There will not be a race committee to monitor the start line. It is up to competitors to protest any On Course Side (over early) infractions. The 360 video from Markus will be posted on youtube the day after the race, before protests begin.

Any damage to Markus is the responsibility of the boat owner. The vehicle Bill of Material cost is \$1000 and the 360 camera is \$450.

VII. Course Description

Three courses will be used for all remaining series. Note that additional courses may be added throughout the season. Courses:

<https://www.google.com/maps/d/u/0/edit?mid=1Qeav-Vhr42irDIH5-NqUkOE-8wXtJMNa&usp=sharing>

Clear Creek Park Course: Starting near Barge295, this course matches the prevailing ESE breeze. After the start, keep Clear Creek Channel Buoy #14 (red nun) to your starboard. Next is a long downwind to an abandoned 26’ white sailboat. If the sailboat goes missing, it will be temporarily replaced by an orange West Marine inflatable mark, or permanently replaced with a 2” pvc. Keep the boat on your port as you round and head back up to Clear Creek Channel Buoy #14. Head to Barge295 where you will cross between a 2” pvc pipe and a finishing flag on the upper deck of Barge295. Course length is 4.9 miles.

- Start line
- Clear Creek Channel Buoy #14 (keep to starboard)
- Abandoned 26’ Sailboat (keep to port)
- Clear Creek Channel Buoy #14 (keep to port)
- Finish between PVC finish line (keep to port) and finishing flag on Barge295 (keep to starboard).

For the first series, this course will only have one lap.

The Shoals Course: This is the same course as above, except you will round a fixed pvc mark instead of the abandoned sailboat. It is a shorter course for times when wind is reduced. Course is 2.5 miles.

- Start line
- Clear Creek Channel Buoy #14 (**starboard rounding**)
- PVC before the Shoal (**port rounding**)
- Clear Creek Channel Buoy #14 (**port rounding**)
- If more than one lap, do the following for each additional lap:
 - PVC before the Shoal (**port rounding**)
 - Clear Creek Channel Buoy #14 (**port rounding**)
- Finish between PVC finish line (keep to port) and finishing flag on Barge295 (keep to starboard).

Windward/Leeward Course: On nights with a suitable wind direction, we will set up a W/L course that will be sailed by one of the classes.

- Start line
- Clear Creek Channel Buoy #14 (**starboard rounding - FIRST LAP ONLY**)
- "Drop Mark" downwind near the starting line (port rounding)
 - This constitutes "One Lap"
- Clear Creek Channel Buoy #14 (**port rounding**)
- For each additional lap:
 - "Drop Mark" downwind near the starting line (port rounding)
 - Clear Creek Channel Buoy #14 (**port rounding**)
- Finish between PVC finish line (keep to port) and finishing flag on Barge 295 (keep to starboard)

VIII. Classes and Handicaps

The Classes are defined as follows:

- One design keelboat classes, ie nominally identical boats conforming to a set of class rules
 - TBD
- Handicap keelboats
 - JAM - Jib And Main. Non-Spin including Catalina 22s (**GREEN**)
 - SPIN - Spinnaker Keelboats (**RED**) (**Broken out as described below after Series 1**)
 - SPRD (**RED**)
 - SPPU (**PURPLE**)

Due to congestion at the starting line for the SPIN class, we have decided to split into "Red" and "Purple" fleets based on Series 1 results. Each class will have a separate start sequence as designated by the Race Committee. The Red and Purple Fleets will be changed following each series, using the most recent completed series results. The bottom two competitors in the Red fleet will be moved to the Purple Fleet for the next series, and the top two competitors in the Purple fleet will be moved to the Red. The SPIN class will continue to be scored as one class using corrected time for annual awards.

- Handicap boardboats and/or multihulls (traditionally called Portsmouth)
 - PORT - Portsmouth Dinghy, Board boats, and Multihulls (**BLUE**)
- New classes, as Multihull Distance, RS21 (one design), or other classes that meet criteria

(Minimum four boats racing for a full series and has a class captain).

IX. Starting

Each class will have a class color, which will be displayed during the sequence countdown. The sequence countdown will consist of the order number, class, course, and number of laps.

Nominally, a race sequence begins at 6:15. If a race sequence has not begun by 6:30, the races are canceled for the day. For course description see below.

An example sequence would be :

- **1 JAM S2** (Shoal course, 2 laps)
 - 6:15:00 - Class flag
 - 6:16:00 - Class and Prep flag
 - 6:17:00 - Class flag
 - 6:18:00 - Start
- **2 PORT S1** (Shoal course, 1 lap)
 - 6:18:00 - Class flag
 - 6:19:00 - Class and Prep flag
 - 6:20:00 - Class flag
 - 6:21:00 - Start
- **3 SPRD P1** (Clear Creek Park course, 1 lap)
 - 6:21:00 - Class flag
 - 6:22:00 - Class and Prep flag
 - 6:23:00 - Class flag
 - 6:24:00 - Start
- **4 SPPU M3** (Multi-leg course, 3 laps)
 - 6:24:00 - Class flag
 - 6:25:00 - Class and Prep flag
 - 6:26:00 - Class flag
 - 6:27:00 - Start

Markus indicates changes of sequence based on class color. Horn blasts indicate the following:

- Long blast - change of class/start, at the minute interval
- Three short - thirty seconds to start
- Two short - twenty seconds to start
- Five short - countdown to start

Prior to sequences, Markus will countdown time in **GREEN**. During a sequence, the countdown is **RED**.

Markus shall provide the sequence order at the start of each minute during prestart, and once during each start countdown.

IX. Insurance and Assumption of Risk

Each participating boat shall be insured with valid third-party liability insurance with a minimum cover of \$300,000 per incident or the equivalent.

Competitors participate in the regatta entirely at their own risk. See RRS 3, Decision to Race. The organizing authority, volunteers, or sponsors will not accept any liability for material damage or personal injury or death sustained in conjunction with or prior to, during, or after the regatta.

X. Protests

The spirit of WNR is fun racing amongst friends, and as such protests are discouraged. To file a protest, submit a properly completed form to the GBCA Fleet Captain at may.chris.w@gmail.com within 24 hours of completion of the race being protested. Forms can be found at <https://www.ussailing.org/resource-library/us-sailing-hearing-request-form/>. Competitors are also encouraged to use the electronic submission tool included in the US Sailing App.

XI. Scoring

One race is required to be completed to constitute a series. A boat's regatta score is the total of her race scores without exclusion.

PHRF classes will be scored using Time on Time with the following conversion formula:

$TCF = 650 / (550 + x)$, where x equals PHRF Handicap.

Portsmouth class competitors will be scored using the applicable rating from the US Sailing Portsmouth Yardstick database. An appropriate Beaufort Scale (BN) number will be applied by the Race Committee based on the observed conditions the night of an applicable race.

For SPIN classes (Red and Purple), each series will be scored in the respective classes as presented each series. For the annual awards, the SPIN class will be scored together based on corrected time.

XII. Series Awards and Social

Series awards will be presented during the bye-week party at BARge 295. An award will be presented to the 1st place competitor in each class per series. Additional awards may be given at the discretion of the race committee.

XIII. Annual Awards

Awards for the season will be given to the first and second highest scoring competitor in each class based on points per race. Only competitors registered for the entire season will be eligible for an annual award. A more detailed description of annual awards will be announced at a later date.

Questions:

Regatta Chair: Darin Keever at darin@keever.cc or

Fleet Captain: Chris May at may.chris.w@gmail.com or 713.591.8115