

Mark Roster

MARK	Description	LAT	LONG
A	R "10" Q R	39° 08.383'	76° 19.357'
B	G "7" FI G 6s	39° 06.589'	76° 18.293'
C	R "4" Q R	39° 05.651'	76° 17.894'
D	G "1UC" FI G 4s	39° 04.811'	76° 18.855'
E	RW "LP" Mo(A)	39° 02.580'	76° 20.761'
F	R "4" FI R 4s	39° 02.261'	76° 22.835'
G	R "10" FI R 2.5s	39° 04.458' †	76° 23.572'
H	R "12" FI R 4s	39° 05.179'	76° 23.572'
J	R "16" FI R 6s	39° 06.991'	76° 23.570'
K	G "23" FI G 4s	39° 09.334'	76° 25.117'
L	G "IM" Q G	39° 12.050'	76° 30.780'
M	Fixed Lt Fl 2.5s 27ft 5M (Poole's Is Bar)	39° 15.707'	76° 16.681'
N	Fixed Lt Fl 2.5s 22ft (Craighill Light)	39° 11.317'	76° 23.664'
P	G "3" FI G 4s	39° 09.136'	76° 21.135'
R	Fixed Lt Fl 6s 51ft 9M (Sandy Point Light)	39° 00.954'	76° 23.075'
T	Fixed Lt Fl 2.5s 52ft 5M (Baltimore Light)	39° 03.552'	76° 23.940'
W	G C "1"	39° 05.571'	76° 15.250'
X	R N "2"	39° 04.026'	76° 16.344'
Z	Fixed Lt Fl 6s 31ft 7M (Love Pt Light)	39° 03.423'	76° 17.020'
PP	G C "11"	39° 14.395'	76° 33.263'

† Indicates revision

Magnetic Bearings Between Marks

		Enter Chart Vertically																						
		A	B	C	D	E	F	G	H	J	K	L	M	N	P	R	T	W	X	Z	PP			
A			347	349	005	022	035	051	057	078	113	124	207	143	130	032	048	323	343	351	130	A		
B	167			353	025	037	050	074	082	107	129	131	199	150	150	045	066	305	341	354	135	B		
C	169	173			053	047	060	086	095	118	135	134	197	153	155	052	077	284	335	354	137	C		
D	185	205	233			045	062	096	107	132	144	139	200	161	169	052	084	266	303	325	142	D		
E	202	217	227	225			090	142	151	165	165		205	177	189	059	123	246	258	265	152	E		
F	215	230	240	242	270			177	180	184	177			211	187	202	019	158	252	262	267	158	F	
G	231	254	266	276	322	357			191	191	177			217	191	213	005	029	272	286	293	154	G	
H	237	262	275	287	331	000	011		191	175				218	191	217	006	021	278	293	300	152	H	
J	258	287	298	312	345	004	011	011		164	143	223	190	233	008	016	294	309	316	146	J			
K	293	309	315	324	345	357	357	355	344		133	237	221	285	001	002	307	319	325	140	K			
L	304	311	314	319					323	313					289	303		310	317	320	152	L		
M	027	019	017	020	025	031	037	038	043	057				062	039	030	036				095	M		
N	323	330	333	341	357	007	011	011	010	041	109	242			329	009	013	323	333	338	124	N		
P	310	330	335	349	009	022	033	037	053	105	122	219	149			022	033	319	335	342	130	P		
R	212	225	232	232	239	199	185	186	188	181			210	189	202		177	244	251	254	161	R		
T	228	247	257	264	303	338	209	201	196	182			216	193	213	357		265	277	283	158	T		
W	143	125	103	086	066	072	091	098	114	127	129			143	139	064	085		040	044	133	W		
X	163	161	155	123	078	082	106	113	129	139	137			153	155	071	097	220		052	139	X		
Z	171	174	174	145	085	087	113	120	136	144	140			158	162	074	103	224	232		142	Z		
PP	310	315	318	322	332	338	334	332	326	320	332	276	304	311	341	338	314	320	322			PP		
A	B	C	D	E	F	G	H	J	K	L	M	N	P	R	T	W	X	Z	PP					

Chesapeake Bay Yacht Racing Association

REGION 2 RACE MARKS

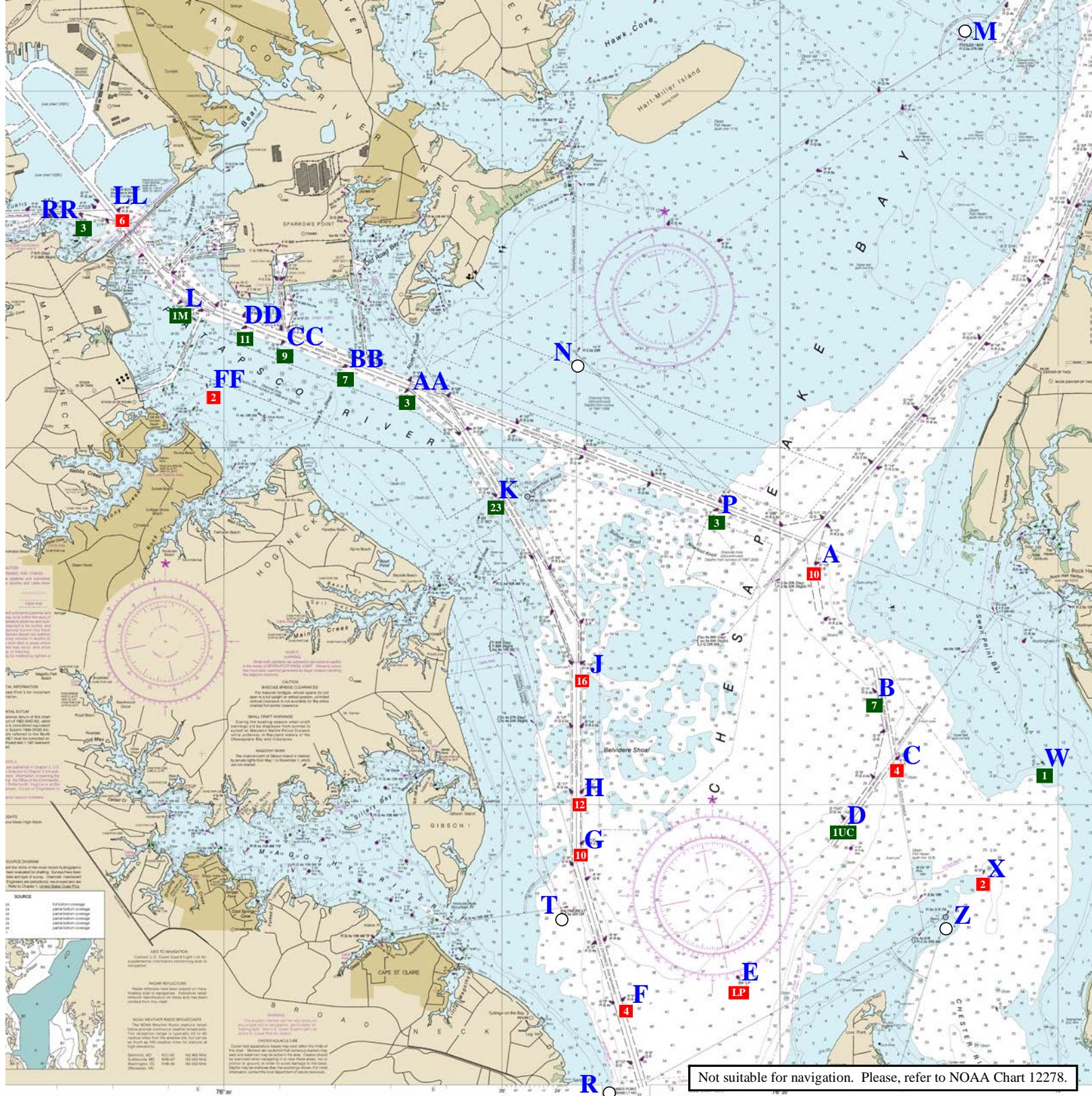
BAY
2022

Positions from:
USCG Light List Volume II Atlantic Coast 2021
LNM District 5 Week 22/22

Last updated: June 27, 2022
Computed by: Scott Kirwin

Distances Between Marks (nm)

	B	C	D	E	F	G	H	J	K	L	M	N	P	R	T	W	X	Z	PP						
A	1.98	2.96	3.60	5.91	6.69	5.11	4.58	3.55	4.57	9.59	7.62	4.45	1.57	7.98	6.00	4.25	4.95	5.28	12.35	A					
B		0.99	1.83	4.45	5.59	4.62	4.34	4.12	5.97	11.12	9.21	6.31	3.37	6.75	5.34	2.57	2.98	3.32	14.00	B					
C			1.12	3.79	5.12	4.57	4.43	4.61	6.71	11.87	10.11	7.23	4.30	6.19	5.14	2.05	2.02	2.33	14.79	C					
D				2.68	4.01	3.68	3.68	4.26	6.64	11.75	11.03	7.51	4.68	5.06	4.15	2.90	2.10	1.99	14.73	D					
E					1.64	2.88	3.40	4.92	7.56		13.51	9.03	6.57	2.43	2.65	5.22	3.72	3.03	15.29	E					
F						2.27	2.98	4.77	7.30		14.28	9.09	7.01	1.32	1.55	6.76	5.34	4.67	14.59	F					
G							0.72	2.53	5.02		12.46	6.86	5.05	3.53	0.95	6.56	5.63	5.19	12.47	G					
H								1.81	4.33			11.81	6.14	4.39	4.25	1.65	6.47	5.73	5.39	11.90	H				
J									2.63	7.55	10.23	4.33	2.86	6.05	3.45	6.61	6.35	6.21	10.56	J					
K										5.17	9.14	2.28	3.10	8.53	5.86	8.53	8.64	8.63	8.10	K					
L											5.57	8.03				13.68	13.79	13.73	3.03	L					
M												6.97	7.43			15.57	13.40		12.92	M					
N													2.93			10.38	7.77	8.70	9.25	9.43	8.05	N			
P																8.33	6.00	5.80	6.32	6.55	10.78	P			
R																	2.69	7.64	6.07	5.32	15.60	R			
T																		7.05	5.92	5.38	13.04	T			
W																			1.76	2.55	16.53	W			
X																				0.80	16.73	X			
Z																						16.72	Z		
B	C	D	E	F	G	H	J	K	L	M	N	P	R	T	W	X	Z	PP							



Chesapeake Bay Yacht Racing Association

REGION 2 RACE MARKS - BAY

Mark Roster

MARK	Description	LAT	LONG
A	R "10" Q R	39° 08.383'	76° 19.357'
B	G "7" Fl G 6s	39° 06.589'	76° 18.293'
C	R "4" Q R	39° 05.651'	76° 17.894'
D	G "1UC" Fl G 4s	39° 04.811'	76° 18.855'
E	RW "LP" Mo(A)	39° 02.580'	76° 20.761'
F	R "4" Fl R 4s	39° 02.261'	76° 22.835'
G	R "10" Fl R 2.5s	39° 04.458' †	76° 23.572'
H	R "12" Fl R 4s	39° 05.179'	76° 23.572'
J	R "16" Fl R 6s	39° 06.991'	76° 23.570'
K	G "23" Fl G 4s	39° 09.334'	76° 25.117'
L	G "1M" Q G	39° 12.050'	76° 30.780'
M	Fixed Lt Fl 2.5s 27ft 5M (Poole's Is Bar)	39° 15.707'	76° 16.681'
N	Fixed Lt Fl 2.5s 22ft (Craighill Light)	39° 11.317'	76° 23.664'
P	G "3" Fl G 4s	39° 09.136'	76° 21.135'
R	Fixed Lt Fl 6s 51ft 9M (Sandy Point Light)	39° 00.954'	76° 23.075'
T	Fixed Lt Fl 2.5s 52ft 5M (Baltimore Light)	39° 03.552'	76° 23.940'
W	G C "1"	39° 05.571'	76° 15.250'
X	R N "2"	39° 04.026'	76° 16.344'
Z	Fixed Lt Fl 6s 31ft 7M (Love Pt Light)	39° 03.423'	76° 17.020'
PP	G C "11"	39° 14.395'	76° 33.263'

† Indicates revision

Computed by: Scott Kirwin

Last updated: June 27, 2022

Chesapeake Bay Yacht Racing Association

REGION 2 RACE MARKS - BAY

Magnetic Bearings Between Marks

Enter Chart Vertically

	↓	↓	↓	↓	↓	↓	↓	↓	↓	↓	↓	↓	↓	↓	↓	↓	↓	↓	↓	↓	
	A	B	C	D	E	F	G	H	J	K	L	M	N	P	R	T	W	X	Z	PP	
A		347	349	005	022	035	051	057	078	113	124	207	143	130	032	048	323	343	351	130	A
B	167		353	025	037	050	074	082	107	129	131	199	150	150	045	066	305	341	354	135	B
C	169	173		053	047	060	086	095	118	135	134	197	153	155	052	077	284	335	354	137	C
D	185	205	233		045	062	096	107	132	144	139	200	161	169	052	084	266	303	325	142	D
E	202	217	227	225		090	142	151	165	165		205	177	189	059	123	246	258	265	152	E
F	215	230	240	242	270		177	180	184	177		211	187	202	019	158	252	262	267	158	F
G	231	254	266	276	322	357		191	191	177		217	191	213	005	029	272	286	293	154	G
H	237	262	275	287	331	000	011		191	175		218	191	217	006	021	278	293	300	152	H
J	258	287	298	312	345	004	011	011		164	143	223	190	233	008	016	294	309	316	146	J
K	293	309	315	324	345	357	357	355	344		133	237	221	285	001	002	307	319	325	140	K
L	304	311	314	319					323	313			289	303			310	317	320	152	L
M	027	019	017	020	025	031	037	038	043	057			062	039	030	036				095	M
N	323	330	333	341	357	007	011	011	010	041	109	242		329	009	013	323	333	338	124	N
P	310	330	335	349	009	022	033	037	053	105	122	219	149		022	033	319	335	342	130	P
R	212	225	232	232	239	199	185	186	188	181		210	189	202		177	244	251	254	161	R
T	228	247	257	264	303	338	209	201	196	182		216	193	213	357		265	277	283	158	T
W	143	125	103	086	066	072	091	098	114	127	129		143	139	064	085		040	044	133	W
X	163	161	155	123	078	082	106	113	129	139	137		153	155	071	097	220		052	139	X
Z	171	174	174	145	085	087	113	120	136	144	140		158	162	074	103	224	232		142	Z
PP	310	315	318	322	332	338	334	332	326	320	332	276	304	311	341	338	314	320	322		PP

Chesapeake Bay Yacht Racing Association

REGION 2 RACE MARKS - BAY

Distances Between Marks (nm)

	B	C	D	E	F	G	H	J	K	L	M	N	P	R	T	W	X	Z	PP	
A	1.98	2.96	3.60	5.91	6.69	5.11	4.58	3.55	4.57	9.59	7.62	4.45	1.57	7.98	6.00	4.25	4.95	5.28	12.35	A
B		0.99	1.83	4.45	5.59	4.62	4.34	4.12	5.97	11.12	9.21	6.31	3.37	6.75	5.34	2.57	2.98	3.32	14.00	B
C			1.12	3.79	5.12	4.57	4.43	4.61	6.71	11.87	10.11	7.23	4.30	6.19	5.14	2.05	2.02	2.33	14.79	C
D				2.68	4.01	3.68	3.68	4.26	6.64	11.75	11.03	7.51	4.68	5.06	4.15	2.90	2.10	1.99	14.73	D
E					1.64	2.88	3.40	4.92	7.56		13.51	9.03	6.57	2.43	2.65	5.22	3.72	3.03	15.29	E
F						2.27	2.98	4.77	7.30		14.28	9.09	7.01	1.32	1.55	6.76	5.34	4.67	14.59	F
G							0.72	2.53	5.02		12.46	6.86	5.05	3.53	0.95	6.56	5.63	5.19	12.47	G
H								1.81	4.33		11.81	6.14	4.39	4.25	1.65	6.47	5.73	5.39	11.90	H
J									2.63	7.55	10.23	4.33	2.86	6.05	3.45	6.61	6.35	6.21	10.56	J
K										5.17	9.14	2.28	3.10	8.53	5.86	8.53	8.64	8.63	8.10	K
L												5.57	8.03			13.68	13.79	13.73	3.03	L
M												6.97	7.43	15.57	13.40				12.92	M
N													2.93	10.38	7.77	8.70	9.25	9.43	8.05	N
P														8.33	6.00	5.80	6.32	6.55	10.78	P
R															2.69	7.64	6.07	5.32	15.60	R
T																7.05	5.92	5.38	13.04	T
W																	1.76	2.55	16.53	W
X																		0.80	16.73	X
Z																			16.72	Z

Computed by: Scott Kirwin

Last updated: June 27, 2022

Mark Roster

MARK	Description	LAT	LONG
AA	G "3" Q G	39° 10.813'	76° 26.700'
BB	G "7" Fl G 6s	39° 11.148'	76° 27.809'
CC	G "9" Fl 4s	39° 11.487'	76° 28.934'
DD	G "11" Fl 6s	39° 11.693'	76° 29.616'
FF	R N "2"	39° 10.845'	76° 30.298'
GG	R "8" Q R	39° 13.710'	76° 32.305'
HH	R "10A" Fl R 4s	39° 14.273'	76° 32.898'
JJ	RG "NH" Fl (2+1) R 6s	39° 16.214'	76° 34.570'
KK	G "5" Q G	39° 14.683'	76° 32.544'
LL	R "6" Fl R 4s	39° 13.330'	76° 31.902'
MM	G "11" Fl G 2.5s	39° 15.151'	76° 32.874'
NN	GR "FM" Fl(2+1) G 6s	39° 15.397'	76° 34.306'
OO	R "16" Q R	39° 14.943'	76° 33.607'
PP	G C "11"	39° 14.395'	76° 33.263'
RR	G "3" Fl G 2.5s	39° 13.275'	76° 32.575'
SS	G "9" Fl G 4s	39° 13.801'	76° 32.632'
TT	R "8" Fl R 2.5s	39° 15.303'	76° 33.214'
K	G "23" Fl G 4s	39° 09.334'	76° 25.117'
L	G "1M" Q G	39° 12.050'	76° 30.780'

† Indicates revision

Magnetic Bearings Between Marks

Enter Chart Vertically

	AA	BB	CC	DD	FF	GG	HH	JJ	KK	LL	MM	NN	OO	PP	RR	SS	TT	K	L
AA		123	123	123	102	135	137	143	142	133	143	139	139	136	130	134	143	332	123
BB	303		123	123	092	138	140	145	145	136	147	141	141	139	131	137	146	322	123
CC	303	303		123	070	142	143	148	150	140	151	144	145	142	134	140	150	317	123
DD	303	303	303		043	145	147	151	154	144	155	147	148	145	136	143	154	315	123
FF	282	272	250	223		163	161	160	167	165	166	157	159	158	155	160	164	302	174
GG	315	318	322	325	343		152	156	180	332	174	149	152	144	037	121	167	319	336
HH	317	320	323	327	341	332		158	225	332	192	147	152	125	357	348	178	321	335
JJ	313	325	329	331	340	336	338		326	336	320	357	341	342	344	339	322	325	336
KK	322	325	330	334	347	000	045	146		351	163	129	119	074	012	016	151	324	344
LL	313	316	320	324	345	152	152	156	171		169	149	152	147	095	141	164	319	337
MM	323	327	331	335	346	354	012	140	343	349		114	081	033	004	003	131	325	344
NN	319	321	324	327	337	329	327	177	309	329	294		321	332	339	332	288	322	332
OO	319	321	325	328	339	332	332	161	299	332	261	141		345	346	338	231	322	334
PP	316	319	322	325	338	324	305	162	254	332	213	152	165		346	332	194	320	332
RR	310	311	314	316	335	217	177	164	192	275	184	159	166	166		186	178	316	323
SS	314	317	320	323	340	301	168	159	196	321	183	152	158	152	006		175	319	332
TT	323	326	330	334	344	347	358	142	331	344	311	108	051	014	358	355		325	341
K	152	142	137	135	122	139	141	144	144	138	145	142	142	140	135	139	145		133
L	303	303	303	303	354	156	155	156	164	157	164	152	154	152	143	152	161	313	
AA	BB	CC	DD	FF	GG	HH	JJ	KK	LL	MM	NN	OO	PP	RR	SS	TT	K	L	

Distances Between Marks (nm)

	BB	CC	DD	FF	GG	HH	JJ	KK	LL	MM	NN	OO	PP	RR	SS	TT	K	L
AA	0.92	1.86	2.43	2.79	5.22	5.92	8.15	5.96	4.76	6.46	7.47	6.76	6.22	5.18	5.49	6.76	1.92	3.40
BB		0.94	1.50	1.95	4.33	5.04	7.29	5.10	3.85	5.61	6.59	5.89	5.33	4.27	4.59	5.90	2.77	2.47
CC			0.57	1.24	3.43	4.15	6.44	4.25	2.95	4.77	5.71	5.01	4.44	3.34	3.68	5.06	3.66	1.54
DD				1.00	2.90	3.62	5.93	3.75	2.41	4.28	5.19	4.49	3.91	2.79	3.15	4.56	4.21	0.97
FF					3.26	3.98	6.31	4.22	2.78	4.75	5.51	4.84	4.23	3.01	3.47	5.00	4.29	1.26
GG						0.73	3.06	0.99	0.49	1.51	2.29	1.59	1.01	0.48	0.27	1.74	7.09	2.04
HH							2.33	0.49	1.22	0.88	1.57	0.87	0.31	1.03	0.52	1.06	7.80	2.77
JJ								2.19	3.55	1.69	0.84	1.47	2.08	3.32	2.84	1.39	10.06	5.10
KK									1.44	0.53	1.54	0.86	0.63	1.41	0.89	0.81	7.86	2.97
LL										1.97	2.78	2.09	1.50	0.53	0.74	2.22	6.61	1.55
MM											1.14	0.60	0.81	1.89	1.36	0.30	8.37	3.50
NN												0.71	1.29	2.51	2.06	0.85	9.36	4.32
OO													0.61	1.85	1.37	0.47	8.65	3.63
PP														1.24	0.77	0.91	8.10	3.03
RR															0.53	2.09	7.00	1.86
SS																1.57	7.34	2.26
TT																	8.67	3.76
K																		5.17
BB	CC	DD	FF	GG	HH	JJ	KK	LL	MM	NN	OO	PP	RR	SS	TT	K	L	

Chesapeake Bay Yacht Racing Association

REGION 2 RACE MARKS

RIVER

2022

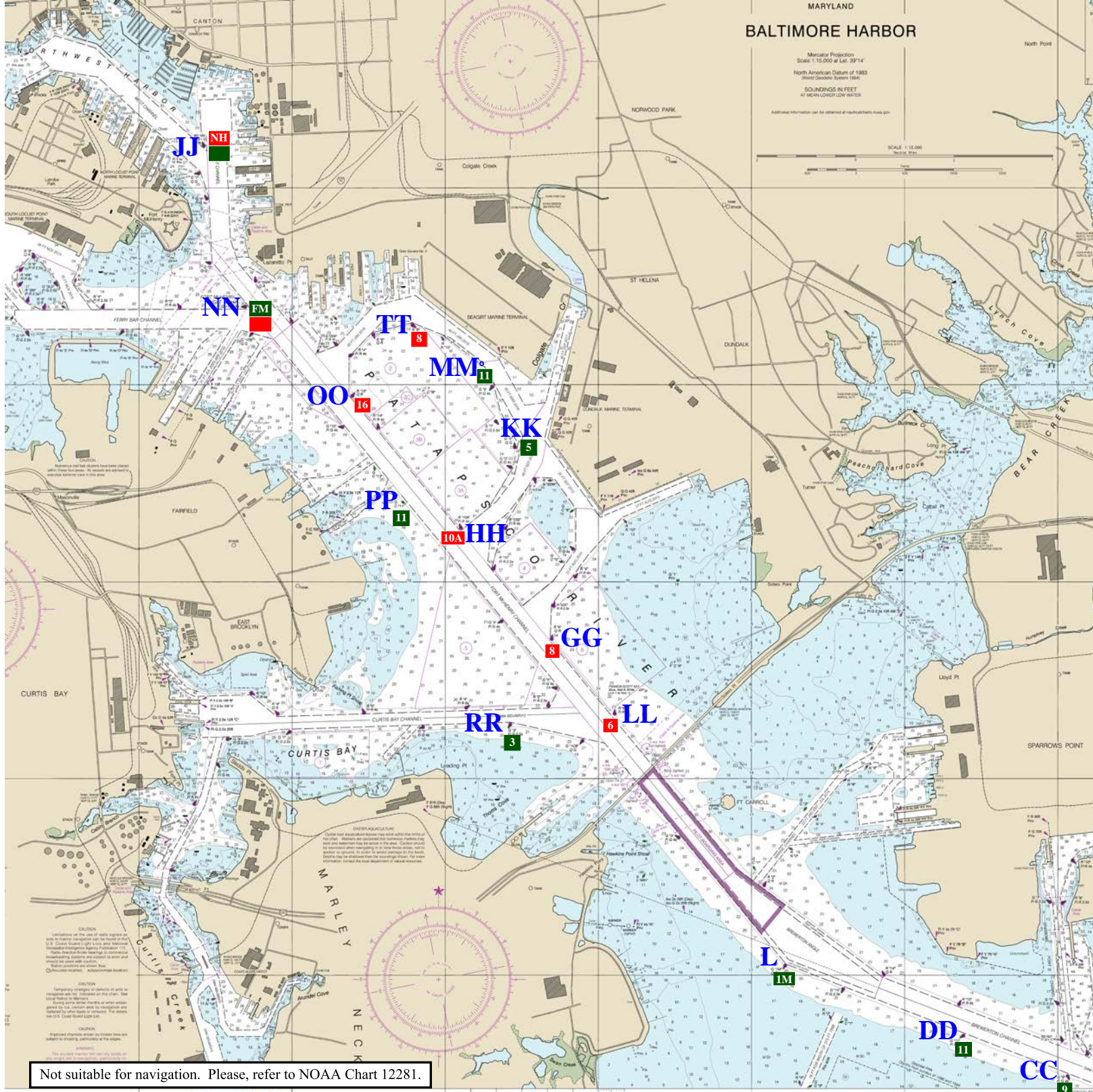
Positions from:
USCG Light List Volume II Atlantic Coast 2021
LNM District 5 Week 22/22

Last updated: June 27, 2022
Computed by: Scott Kirwin

MARYLAND BALTIMORE HARBOR

Metric Projection
Scale 1:15,000 at Lat. 39°14'
North American Datum of 1983
(World Geodetic System 1984)
SOUNDINGS IN FEET
AT MEAN LOWEST LOW WATER
Additional information can be obtained at nauticalcharts.noaa.gov.

SCALE 1:15,000
Nautical Miles



Not suitable for navigation. Please, refer to NOAA Chart 12281.

Chesapeake Bay Yacht Racing Association

REGION 2 RACE MARKS - RIVER

Mark Roster

MARK	Description	LAT	LONG
AA	G "3" Q G	39° 10.813'	76° 26.700'
BB	G "7" Fl G 6s	39° 11.148'	76° 27.809'
CC	G "9" Fl 4s	39° 11.487'	76° 28.934'
DD	G "11" Fl 6s	39° 11.693'	76° 29.616'
FF	R N "2"	39° 10.845'	76° 30.298'
GG	R "8" Q R	39° 13.710'	76° 32.305'
HH	R "10A" Fl R 4s	39° 14.273'	76° 32.898'
JJ	RG "NH" Fl (2+1) R 6s	39° 16.214'	76° 34.570'
KK	G "5" Q G	39° 14.683'	76° 32.544'
LL	R "6" Fl R 4s	39° 13.330'	76° 31.902'
MM	G "11" Fl G 2.5s	39° 15.151'	76° 32.874'
NN	GR "FM" Fl(2+1) G 6s	39° 15.397'	76° 34.306'
OO	R "16" Q R	39° 14.943'	76° 33.607'
PP	G C "11"	39° 14.395'	76° 33.263'
RR	G "3" Fl G 2.5s	39° 13.275'	76° 32.575'
SS	G "9" Fl G 4s	39° 13.801'	76° 32.632'
TT	R "8" Fl R 2.5s	39° 15.303'	76° 33.214'
K	G "23" Fl G 4s	39° 09.334'	76° 25.117'
L	G "1M" Q G	39° 12.050'	76° 30.780'

† Indicates revision

Computed by: Scott Kirwin

Last updated: June 27, 2022

Chesapeake Bay Yacht Racing Association

REGION 2 RACE MARKS - RIVER

Magnetic Bearings Between Marks

Enter Chart Vertically

	↓	↓	↓	↓	↓	↓	↓	↓	↓	↓	↓	↓	↓	↓	↓	↓	↓	↓	↓
	AA	BB	CC	DD	FF	GG	HH	JJ	KK	LL	MM	NN	OO	PP	RR	SS	TT	K	L
AA		123	123	123	102	135	137	143	142	133	143	139	139	136	130	134	143	332	123
BB	303		123	123	092	138	140	145	145	136	147	141	141	139	131	137	146	322	123
CC	303	303		123	070	142	143	148	150	140	151	144	145	142	134	140	150	317	123
DD	303	303	303		043	145	147	151	154	144	155	147	148	145	136	143	154	315	123
FF	282	272	250	223		163	161	160	167	165	166	157	159	158	155	160	164	302	174
GG	315	318	322	325	343		152	156	180	332	174	149	152	144	037	121	167	319	336
HH	317	320	323	327	341	332		158	225	332	192	147	152	125	357	348	178	321	335
JJ	323	325	329	331	340	336	338		326	336	320	357	341	342	344	339	322	325	336
KK	322	325	330	334	347	000	045	146		351	163	129	119	074	012	016	151	324	344
LL	313	316	320	324	345	152	152	156	171		169	149	152	147	095	141	164	319	337
MM	323	327	331	335	346	354	012	140	343	349		114	081	033	004	003	131	325	344
NN	319	321	324	327	337	329	327	177	309	329	294		321	332	339	332	288	322	332
OO	319	321	325	328	339	332	332	161	299	332	261	141		345	346	338	231	322	334
PP	316	319	322	325	338	324	305	162	254	327	213	152	165		346	332	194	320	332
RR	310	311	314	316	335	217	177	164	192	275	184	159	166	166		186	178	316	323
SS	314	317	320	323	340	301	168	159	196	321	183	152	158	152	006		175	319	332
TT	323	326	330	334	344	347	358	142	331	344	311	108	051	014	358	355		325	341
K	152	142	137	135	122	139	141	144	144	138	145	142	142	140	135	139	145		133
L	303	303	303	303	354	156	155	156	164	157	164	152	154	152	143	152	161	313	
	AA	BB	CC	DD	FF	GG	HH	JJ	KK	LL	MM	NN	OO	PP	RR	SS	TT	K	L

Chesapeake Bay Yacht Racing Association

REGION 2 RACE MARKS - RIVER

Distances Between Marks (nm)

	BB	CC	DD	FF	GG	HH	JJ	KK	LL	MM	NN	OO	PP	RR	SS	TT	K	L	
AA	0.92	1.86	2.43	2.79	5.22	5.92	8.15	5.96	4.76	6.46	7.47	6.76	6.22	5.18	5.49	6.76	1.92	3.40	AA
BB		0.94	1.50	1.95	4.33	5.04	7.29	5.10	3.85	5.61	6.59	5.89	5.33	4.27	4.59	5.90	2.77	2.47	BB
CC			0.57	1.24	3.43	4.15	6.44	4.25	2.95	4.77	5.71	5.01	4.44	3.34	3.68	5.06	3.66	1.54	CC
DD				1.00	2.90	3.62	5.93	3.75	2.41	4.28	5.19	4.49	3.91	2.79	3.15	4.56	4.21	0.97	DD
FF					3.26	3.98	6.31	4.22	2.78	4.75	5.51	4.84	4.23	3.01	3.47	5.00	4.29	1.26	FF
GG						0.73	3.06	0.99	0.49	1.51	2.29	1.59	1.01	0.48	0.27	1.74	7.09	2.04	GG
HH							2.33	0.49	1.22	0.88	1.57	0.87	0.31	1.03	0.52	1.06	7.80	2.77	HH
JJ								2.19	3.55	1.69	0.84	1.47	2.08	3.32	2.84	1.39	10.06	5.10	JJ
KK									1.44	0.53	1.54	0.86	0.63	1.41	0.89	0.81	7.86	2.97	KK
LL										1.97	2.78	2.09	1.50	0.53	0.74	2.22	6.61	1.55	LL
MM											1.14	0.60	0.81	1.89	1.36	0.30	8.37	3.50	MM
NN												0.71	1.29	2.51	2.06	0.85	9.36	4.32	NN
OO													0.61	1.85	1.37	0.47	8.65	3.63	OO
PP														1.24	0.77	0.91	8.10	3.03	PP
RR															0.53	2.09	7.00	1.86	RR
SS																1.57	7.34	2.26	SS
TT																	8.67	3.76	TT
K																		5.17	K
	BB	CC	DD	FF	GG	HH	JJ	KK	LL	MM	NN	OO	PP	RR	SS	TT	K	L	

Computed by: Scott Kirwin

Last updated: June 27, 2022