

## 2022 ANNUAL DAVE IREY REGATTA

JUNE 4-5

### SAILING INSTRUCTIONS

#### 1 RULES

- 1.1 The regatta will be governed by the rules as defined in The Racing Rules of Sailing.

#### 2.1 NOTICE TO COMPETITORS

- 2.1 Notices to competitors will be posted on the official notice board located on the East window of the WRSC clubhouse

#### 3 SIGNALS MADE ASHORE

- 3.1 Signals made ashore will be displayed from the flagpole located at WRSC. When flag AP is displayed ashore, '1 minute' is replaced with 'not less than 1 hour' in the race signal AP. This text is appended to the meaning of the flag AP in the RRS Race Signals.

#### 4 SCHEDULE OF EVENTS

##### 4.1 Saturday

|      |   |
|------|---|
| 0915 | Registration closed                                     |
| 0930 | Competitors' meeting (at flagpole or inside if raining) |

First Warning Signal:  
1100 First Warning Signal

The Race Committee (RC) will announce the order of starts for the first race at the competitors' meeting.

##### 4.2 Sunday

|      |                                     |
|------|-------------------------------------|
| 1030 | First warning signal                |
| 1500 | No races will start after this time |

Awards will follow racing.

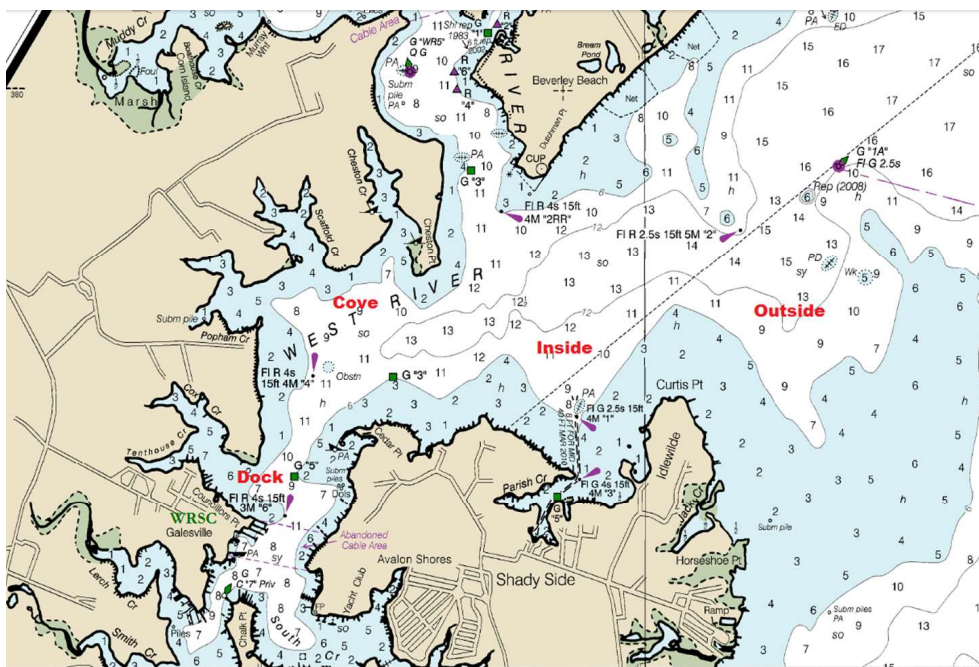
- 4.3 Number of Races: There is no limit to the number of races. The committee will attempt to maximize racing for the conditions available.

#### 5 RACING AREA

- 5.1 The venue shall be finalized by the RC on race day. WRSC typically races this event on the inside course, as shown in the map below.

# 2022 DAVE IREY REGATTA SI's

6.1



## 6 THE COURSES

6.1 The course will be as shown in Appendix B.

## 7 MARKS

7.1 The marks will be as described in Appendix B.

## 8 THE START

8.1 Classes will use a fixed starting line which will be between a staff displaying a yellow flag on the RC signal boat and the course side of the port-end starting mark to be left to port.

8.2 Boats whose warning signal has not been made shall avoid the starting area during the starting sequence for other races.

8.3 Note that the order of the starts may not be constant.

## 9 THE FINISH

9.1 The finishing line will be between a staff displaying a blue flag on the RC signal boat and the course side of the finishing mark.

## 10 TIME LIMITS

10.1 The first boat must finish within 60 minutes

10.2 Boats failing to finish within 30 minutes after the first boat sails the course and finishes will be scored DNF. This changes RRS 35.

## 11 PENALTY SYSTEM

11.1 For the Multihull classes RRS 44.1 is changed so that the Two-Turns Penalty is replaced by the One-Turn Penalty.

# 2022 DAVE IREY REGATTA SI's

## 12 PROTESTS AND REQUESTS FOR REDRESS

- 12.1 Protest Forms are available at the bar. Protests and requests for redress or reopening shall be delivered to the PRO within one hour after the RC returns to the dock. This changes the time limit in RRS 61.3. The list of protests and requests received will be posted on the notice board. Hearings will be held as soon as possible after racing each day in the clubhouse boardroom.

## 13 SCORING

- 13.1 One (1) race is required to be completed to constitute a series
- a When fewer than 5 races have been completed, a boat's series score will be the total of her race scores.
  - b When from 5 to 11 races have been completed, a boat's series score will be the total of her race scores excluding her worst score.
  - c When 12 or more races have been completed, a boat's series score will be the total of her race scores excluding her two worst scores.

## 14 SAFETY REGULATIONS

- 14.1 Before starting their first race of the day, all competitors' boats shall sail astern the signal boat, give their sail number and be acknowledged by the race committee.
- 14.2 A boat that retires from a race shall notify the race committee as soon as possible.

## 15 SUPPORT BOATS

- 15.1 Support boats shall be marked with the letters WRSC or as described at the competitor's meeting.

## 16 RADIO COMMUNICATION

- 16.1 Except in an emergency, a boat that is racing shall not make voice or data transmissions and shall not receive voice or data communications that are not available to all boats. This restriction also applies to mobile telephones but does not apply to communications to notify the RC that a competitor is leaving the race area.

## 17 PRIZES

- 17.1 For each class, prizes will be given to the first-place finisher in classes with three or fewer entries, the first two finishers in classes with four to six entries, and the first three finishers in classes with seven or more entries.
- 17.2 The Dave Irey Memorial perpetual trophy will be awarded to first place finisher in the class with the largest number of registered competitors.

## 18 DISCLAIMER OF LIABILITY

- 18.1 Competitors participate in the regatta entirely at their own risk. See RRS 4, Acceptance of the Rules. The organizing authority will not accept any liability for material damage or personal injury or death sustained in conjunction with or prior to, during, or after the regatta.

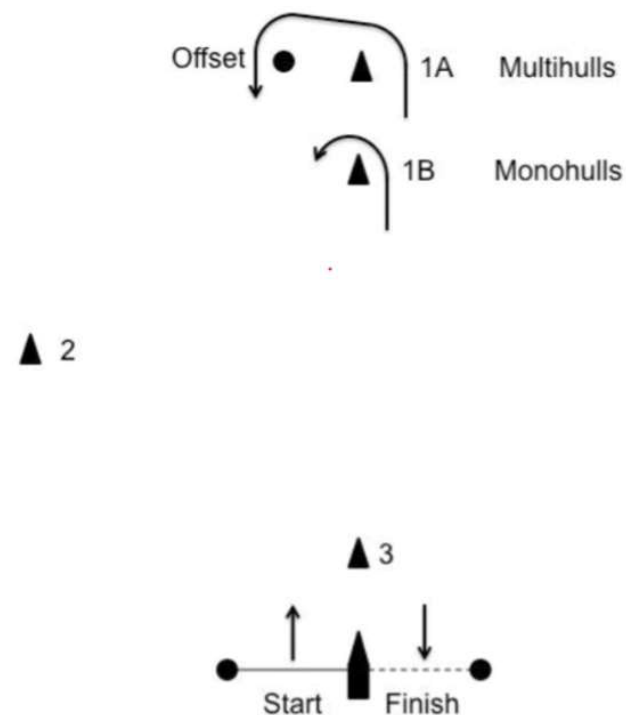
## APPENDIX B

### 1 COURSE

- 1.1 Courses will be Windward-Leeward or Triangle-Windward-Leeward designated by a letter "W" or "O" (respectively) posted on the starboard side of the signal boat. The number of legs will be designated after the letter (i.e. "W4" indicates windward, leeward, windward, then finish to leeward). The course will be posted prior to the Preparatory signal. This changes RRS 27.1.
- 1.2 The race committee can change Mark 3 to a gate, this will be announced at the competitor's meeting.

### 2.1 MARKS

- 2.1 Small round red/orange marks will be used for the offset, starting, and finish pins. Yellow cylinders will be used as the windward and leeward marks. An orange trapezoid shall be used as the change of course mark.
- 2.2 The marks shall be as described above unless otherwise described at the competitor's meeting.



**Courses For Monohulls:**

"W2": Start-1B-Finish  
 "W4": Start-1B-3-1B-Finish  
 "O5": Start-1B-2-3-1B-Finish

**Courses For Multihulls:**

"W2": Start-1A-Offset-Finish  
 "W4": Start-1A-Offset-3-1A-Offset-Finish  
 "W6": Start-1A-Offset-3-1A-Offset-3-1A-Offset-Finish