



NOTICE OF RACE
2022 FLEUR DE LIS REGATTA
June 4, 2022



The event is co-sponsored by Lake Pontchartrain Women's Sailing Association and New Orleans Yacht Club (NOYC). The Organizing Authority is the Lake Pontchartrain Women's Sailing Association. The regatta is to be held on the South Shore of Lake Pontchartrain and hosted by New Orleans Yacht Club.

1. RULES

- 1.1 The Regatta will be governed by the rules as defined in The 2021-2024 Racing Rules of Sailing (RRS).
- 1.2 The US Sailing prescriptions will apply.

2. SAILING INSTRUCTIONS

- 2.1 Sailing instructions are available online at the https://d282wvk2qi4wzk.cloudfront.net/3BZ7Uv6lZC_doc_1646950543838 and paper copies will be available after 0830 on June 4, 2022 at New Orleans Yacht Club. Two races are scheduled. One race will constitute a series. The sailing instructions will consist of the instructions in New Orleans Yacht Club General Sailing Instructions, and supplementary sailing instructions, if any, that will be on the official notice board located at New Orleans Yacht Club.

3. COMMUNICATION

- 3.1 The online official notice board is located at https://www.regattanetwork.com/event/24737_-_newsroom
- 3.2 All boats shall carry a VHF radio capable of communication on channel 69-71.
- 3.3 On the water, the race committee will make courtesy broadcasts to competitors on VHF radio. The channel will be stated in the SIs.

4. ELIGIBILITY AND ENTRY

- 4.1 The event is open to all boats with a current, valid GYA PHRF Certificates. Boats without a current GYA PHRF Certificate may be assigned a PHRF rating at the discretion of the Race Committee. This assigned rating may not be protested.
- 4.2 Fleets may be divided into classes based upon participation. Three boats will be needed to make a fleet or class.

- 4.3 Eligible boats may enter the event by registering online at https://www.regattanetwork.com/clubmgmt/applet_registration_form.php?regatta_id=24737
- 4.4 To be considered an entry in the event, a boat shall complete all registration requirements and pay all fees by June 4, 2022 1000hrs.

5. FEES

- 5.1 The entry fee for each participating yacht is \$25.00. There is a \$5.00 deduction for current LPWSA members.

6. CREW LIMITATIONS

- 6.1 The following crew limitations apply. All boats must have a female at the helm and 50% of crew members must be female over the age 12 years prior to June 4, 2022. In the event of an odd number of crew, the odd number crew may be male or female. Participants do not need to belong to a yacht club, although membership in LPWSA is highly encouraged.

7. SCHEDULE (tentative)

- 7.1 Registration and Event Check-in at NOYC:

Date	From	To
June 3, 2022	1800	2000
June 4, 2022	0830	1000

- 7.2 Skippers' meeting at NOYC:

Date	From	To
June 3, 2022	1800	1830

- 7.2 Dates of racing:

Date	From	To
June 4, 2022	1100	1530

- 7.3 Two races are scheduled. One race will constitute a series.
- 7.4 On the scheduled day of racing no warning signal will be made after 1400 hrs.
- 7.5 Trophy presentation will occur at NOYC one hour after RC docks.

8. COURSES

- 8.1 Course options to be sailed are outlined in Addendum A

8.2 Addendum B shows the location of the racing area and racing marks that may be used.

9. PENALTY SYSTEM

9.1 For all classes RRS 44.1 is changed so that the Two-Turns Penalty is replaced by the One-Turn Penalty.

9.2 The right of appeal from a protest committee decision is denied as provided in RRS 70.5 [(a)(b)(c)].

10. SCORING

10.1 The scoring system is as follows: the Low Point System of RRS Appendix A will apply. There will be no throwouts, this changes A2.

10.2 Two races are scheduled. One race is required to be completed to constitute a series.

11.3 A boat's series score shall be the total of her race scores.

11. PRIZES

11.1 Prizes will be given as follows: First, second, and third place for both spinnaker and non-spinnaker classes. A LPWSA Fleur de Lis Perpetual Trophy will be awarded to the boat finishing with the lowest score for the regatta in both Spinnaker and Nonspinnaker classes.

12. FURTHER INFORMATION

12.1 For further information please contact, Fleur de Lis Regatta Chair, Laurie Wood (lw70001@gmail.com). Host Yacht Club: New Orleans Yacht Club (NOYC), 403 N Roadway, New Orleans, LA 504-288-4200.

ADDENDUM A Course Options

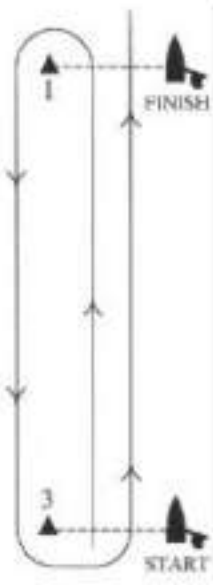
1. WEDNESDAY NIGHT COURSE

1. The course shall use fixed marks. The Race Committee will post the course on the Committee Boat. See noyc.org/images/chart.pdf on the NOYC website for the fixed mark names, their position, bearing and distances. If the course includes "J-H-A" or "J-H-B", for that portion of the course, boats shall round the offset after rounding the "J" mark, and if the course is not shortened at "H", boats may pass "H" on either side. If the "J" mark is used in a different course, the offset is not part of the course. If "J" mark or its offset are missing, round the remaining mark.
2. If a course designation is followed by a numeral, the course shall be sailed as laps equal to the numeral. The course may be changed or shortened at any mark of the course. Distances are not subject to protest.
3. All mark roundings of the course shall be to port. If the course to be sailed requires that the marks to be rounded to starboard, the Race Committee shall indicate such by displaying a green flag prior to the Warning Signal for each class to start.
4. When shortening the race course, race committee will attempt to notify competitors via VHF channel 69.

2. BIG WHEEL COURSE This course will only be sailed if the Notice of Regatta so states.

The Race Committee will post the course on the Committee Boat. The Committee Boat will be on station at the T mark. The course will round the marks A through H shown on the NOYC standard chart. For example, if the course is ET2, all boats shall, after starting between T and the Committee Boat, proceed to E and round to port, then proceed around the circle of marks in a counterclockwise direction two times. After two rounds, the initial mark will be passed to port again before proceeding to the finish line between T and the Committee Boat. The course will not be changed or shortened. All marks rounding's of the course shall be to port. Missing marks will be replaced with temporary RED marks.

3. WINDWARD-LEEWARD COURSE "W1.5"



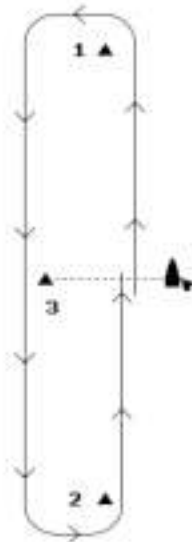
1. All regattas will be sailed using the US Sailing Prescriptions Appendix T – alternative procedures for dispute resolution. US Sailing prescriptions T1, T2, and T4.2 apply.
2. Protests may be filed with the PRO, scorer, or at the bar no later than forty-five minutes (45) after the Race Committee boat docks.

17. SCORING - *(Changes Rule A2)*

1. The Low Point scoring system of Appendix A will apply, except that no score will be excluded unless three (3) races are held. One race constitutes a series.
2. PHRF Scoring will be time over distance with distance rounded to the nearest 0.01 nm. Portsmouth Yardstick will be scored using wind handicapping. The distance is not subject to protest.

18. SAFETY REGULATIONS - *(Changes Rule 40, Flag Y)*

1. Life jackets of USCG-approved design shall be worn by the crews of all single-handed and trapeze boats at all times while racing. On all other boats it is the responsibility of the skipper and crew to determine when life jackets will be worn. The meaning of Race Signal Y is changed to, "Comply with RRS 1.2".
2. All classes of PHRF boats and any other classes as designated must carry a VHF radio and monitor channel 69.
3. If the race starts or finishes after dark, including all Wednesday night races, all boats shall have working running lights. Boats 7 meters or less in length shall have the running lights required for boats of 8 meters. Boats not otherwise required to have a VHF, must have a working VHF.
4. A boat withdrawing must notify the race committee as soon as possible, and if unable to contact the race committee then must inform the bar or club

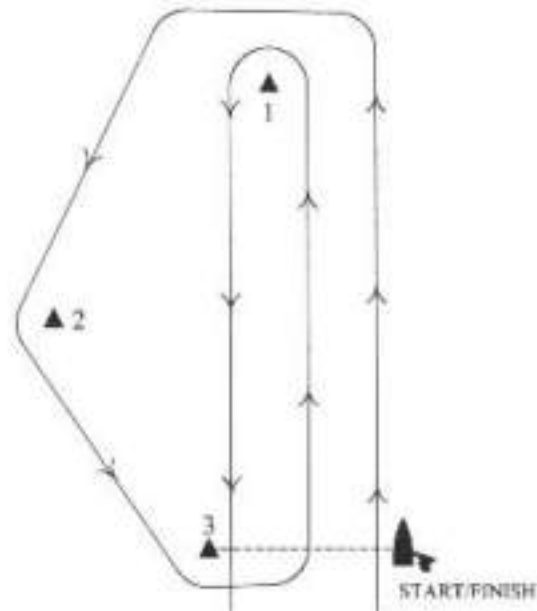


Options for this course may include:

- increasing or decreasing the number of legs;
- sailing multiple rounds of the course;
- finishing at Mark 1, 2 or 3;
- finishing to port or starboard of the finishing mark depending on the location of the RC boat.

Temporary	Fixed	Description
W	m1 m3	1 round, 2 legs, start - 1 - finish
W1.5	m1 m3 1.5	1.5 rounds, 3 legs, start-1-3-finish
W 2	m1 m3 2	2 rounds, 4 legs, start-1-3-1-finish
W 2.5	m1 m3 2.5	2.5 rounds, 5 legs, start-1-3-1-3-finish
W 3	m1 m3 3	3 rounds, 6 legs, start-1-3-1-3-1-finish

5. TRIANGLE COURSE "G"

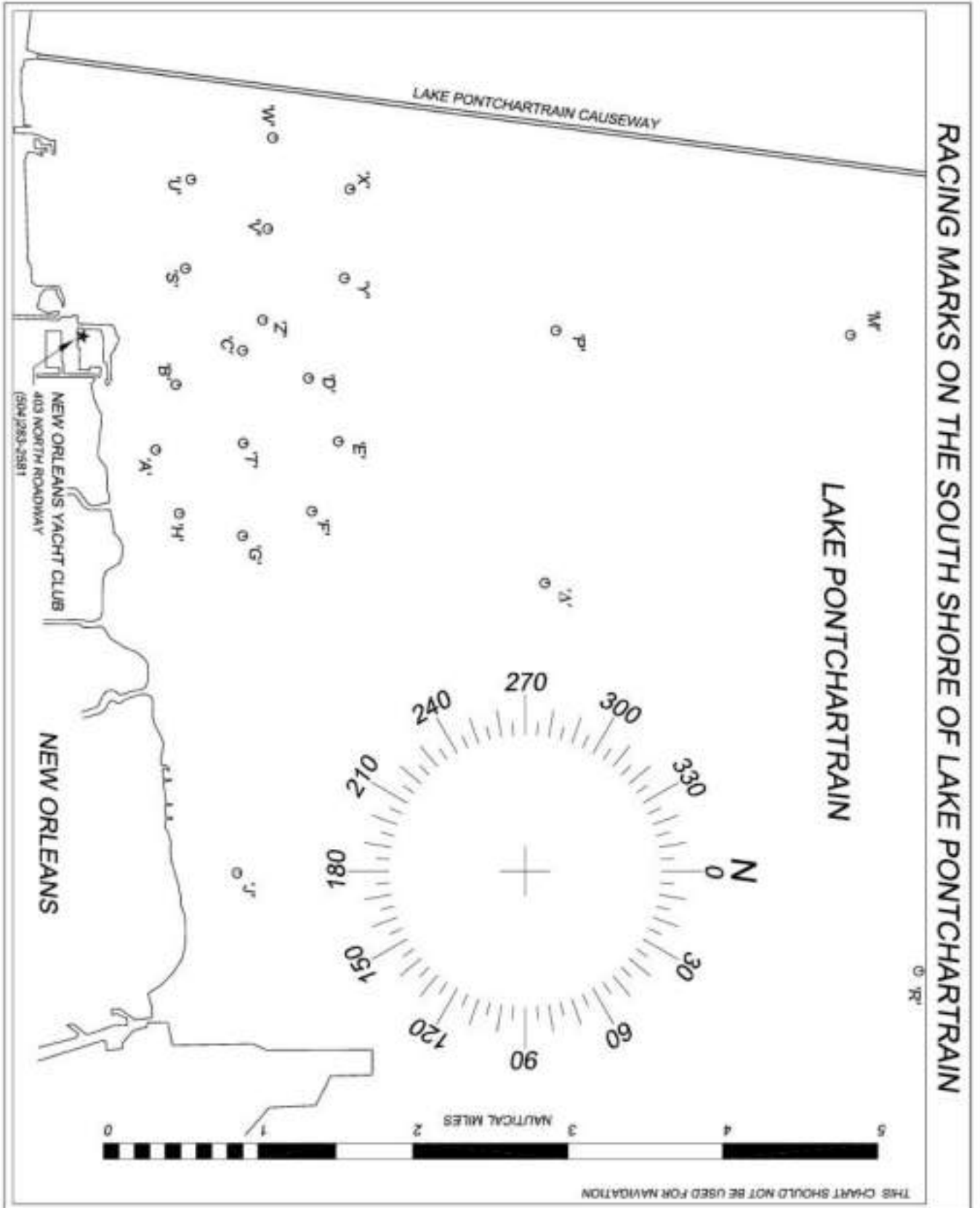


Options for this course may include:

- a. . increasing or decreasing the number of legs;
- b. sailing multiple rounds of the course;
- c. finishing at Mark 1, 2 or 3;
- c. finishing to port or starboard of the finishing mark depending on the location of the RC boat;

Temporary	Fixed	Description
T	m1 m2 m3	1 round, 3 legs, start-1-2- finish
T 2	m1 m2 m3 2	2 rounds, 6 legs, start-1-2- 3-1-2-finish
T W	m1 m2 m3 T W	triangle-windward, 4 legs, start-1-2-3-finish
G or GC	m1 m2 m3 GC	Gold Cup, 5 legs, start-1- 2-3-1-finish

ADDENDUM B Racing Area and Racing Marks





GO TO MARK

FROM MARK

A	B	C	D	E	F	G	H	T	J	Δ	P	S	M	U	V	W	X	Y	Z	LATITUDE	LONGITUDE
A	292°	315°	338°	000°	022°	045°	068°	000°	079°	019°	343°	286°	351°	281°	300°	293°	308°	319°	313°	N 30° 2000'	W 90° 6200'
B	046	085	111	120	111	085	046	060	273	265	271	124	456	181	170	222	221	178	122	N 30° 2176'	W 90° 6690'
C	135°	158°		023°	045°	067°	090°	112°	090°	092°	038°	365°	246°	358°	258°	286°	303°	322°	308°	N 30° 2600'	W 90° 6893'
D	085	046		046	085	111	120	111	060	329	240	201	065	390	120	090	147	137	093	N 30° 3024'	W 90° 6690'
E	180°	203°	225°	247°		113°	135°	157°	180°	105°	034°	331°	234°	348°	244°	266°	261°	275°	248°	N 30° 3200'	W 90° 6200'
F	203°	225°	248°	270°	293°		157°	180°	225°	103°	017°	323°	247°	342°	253°	265°	279°	281°	262°	N 30° 3024'	W 90° 5710'
G	225°	248°	270°	293°	315°	337°		202°	270°	093°	008°	325°	262°	341°	264°	277°	276°	288°	293°	N 30° 2600'	W 90° 5507'
H	085	111	120	111	085	046		046	060	209	192	243	181	412	238	209	266	246	192	N 30° 2176'	W 90° 5710'
I	269°	284°	272°	280°	285°	283°	273°	262°	272°		318°	301°	268°	320°	268°	275°	274°	281°	282°	N 30° 2500'	W 90° 3100'
J	273	312	329	315	277	232	209	228	269		270	405	398	525	446	417	474	451	394	N 30° 2500'	W 90° 3100'
K	199°	209°	218°	221°	214°	197°	188°	191°	204°	138°		273°	224°	322°	231°	235°	241°	246°	240°	N 30° 4500'	W 90° 5200'
L	265	266	240	196	156	154	192	237	209	270		165	299	255	340	286	334	285	234	N 30° 4500'	W 90° 5200'
M	163°	172°	175°	167°	151°	143°	145°	154°	159°	121°	093°		190°	002°	204°	202°	218°	197°	184°	N 30° 4600'	W 90° 7100'
N	271	245	201	162	160	198	243	271	215	405	185		230	190	246	189	215	158	132	N 30° 4600'	W 90° 7100'
O	106°	102°	066°	048°	054°	067°	082°	096°	078°	088°	044°	010°		007°	271°	332°	352°	332°	001°	N 30° 2337'	W 90° 7581'
P	124	079	065	103	147	176	181	163	122	388	299	230		419	058	058	100	116	100	N 30° 2337'	W 90° 7581'
Q	171°	176°	178°	175°	168°	162°	161°	165°	170°	140°	142°	182°	187°	194°	192°	200°	198°	188°	183°	N 30° 6500'	W 90° 7027'
R	456	433	390	349	338	366	412	447	397	525	255	190	419	428	373	388	331	319	367	N 30° 6500'	W 90° 7027'
S	101°	097°	078°	063°	064°	073°	084°	095°	082°	088°	051°	024°	091°	014°		031°	001°	031°	061°	N 30° 2351'	W 90° 8246'
T	181	136	120	151	196	230	238	220	179	446	340	246	058	428	058	058	100	116	100	N 30° 2351'	W 90° 8246'
U	120°	123°	105°	080°	076°	085°	097°	109°	099°	095°	022°	152°	012°	211°		271°	332°	031°	091°	N 30° 2845'	W 90° 7900'
V	170	124	090	106	151	190	209	201	149	417	286	189	058	373	058	058	058	058	058	N 30° 2845'	W 90° 7900'
W	113°	113°	100°	084°	081°	086°	096°	105°	097°	094°	061°	036°	121°	020°	151°	091°		031°	061°	N 30° 2859'	W 90° 8565'
X	222	176	147	163	208	248	266	256	206	474	334	215	100	388	058	058	058	058	100	N 30° 2859'	W 90° 8565'
Y	128°	132°	123°	104°	095°	099°	108°	118°	113°	101°	066°	038°	152°	018°	181°	152°	211°		091°	N 30° 3353'	W 90° 8218'
Z	221	177	137	136	175	220	246	247	190	451	295	158	116	331	100	058	058		058	N 30° 3353'	W 90° 8218'
A	139°	147°	142°	113°	097°	101°	113°	126°	122°	102°	060°	017°	181°	008°	211°	211°	241°	271°	151°	N 30° 3339'	W 90° 7653'
B	178	138	093	081	118	163	192	197	138	394	234	132	100	319	116	058	100	058		N 30° 3339'	W 90° 7653'
C	133°	144°	128°	068°	068°	082°	099°	116°	104°	095°	047°	004°	211°	003°	241°	271°	271°	302°	331°	N 30° 2831'	W 90° 7234'
D	122	081	037	051	097	133	151	147	092	359	243	177	058	367	100	058	115	100	058	N 30° 2831'	W 90° 7234'

New Orleans Yacht Club

Top number is compass bearing.
Bottom number is distance in nautical miles.

(Positions subject to variation)
Revision 1, April 2014