



Weta North American Championship



November 3-6, 2022

Hosted by Charlotte Harbor Regatta, Inc.
Port Charlotte, FL

SAILING INSTRUCTIONS

1. RULES

- 1.1. The regatta will be governed by the rules as defined in the current The Racing Rules of Sailing.
- 1.2. The notation '[DP]' in a rule means that the penalty for a breach of the rule may, at the discretion of the protest committee, be less than disqualification.

2. NOTICES TO COMPETITORS

- 2.1. Notices to competitors will be posted on the official notice board located in the patio area of the nearby house.

3. CHANGES TO SAILING INSTRUCTIONS

- 3.1. Any change to the sailing instructions will be posted within 30 minutes after the Skipper's meeting. Thereafter, changes will be posted before racing begins for the day.
- 3.2. For oral changes to the sailing instructions on the water the following process will be used: The "L" flag with TWO sounds before the warning signal will be used to signal a change to the sailing instructions. Boats will come to the RC boat and receive verbal instructions for the change. The "L" flag will stay up for at least two minutes and then will be dropped with one sound. The next signal will be made one minute later. This does not change the definition of the "L" flag in RRS Race Signals.

4. SIGNALS MADE ASHORE

- 4.1. Signals made ashore will be displayed on Flagpole to the South of the boat ramp.
- 4.2. When flag AP is displayed ashore, '1 minute' is replaced with 'not less than 45 minutes' in race signal AP.

5. CLASS FLAGS

- 5.1. The Weta Class flags will be the Warning signal for each Division.
 - 5.1.1. Single-Handed Division – Class Flag with One "W" logo.
 - 5.1.2. Double-Handed Division – Class Flag with Two "W" logos.



2022 Weta North American Championship

Sailing Instructions

6. RACING AREAS

- 5.2. The racing areas will be south of Charlotte County Beach Park on the waters of the Peace River. See Attachment One.

7. THE COURSES

- 7.1. Please see course described on the attached course sheet, Attachment Two.
- 7.2. The course number will be displayed at the stern of the Signal Boat.
- 7.3. If the change mark is used for the weather mark the offset will not be used.
- 7.4. If a mark is missing from the gate, all boats will round the remaining mark to port.

8. MARKS

- 8.1. The windward mark will be a yellow inflatable.
- 8.2. The offset mark will be a small orange inflatable.
- 8.3. The leeward marks 2S and 2P will be red cone inflatables.
- 8.4. The start and finish mark will be a small orange inflatable.
- 8.5. The change mark will be a red cone inflatable.
- 8.6. The Race Committee Signal boat is a mark at the start line and at the finish line.

9. THE START

- 9.1. Races will be started by using RRS 26.
- 9.2. The starting line will be between a staff displaying an ORANGE flag on the race committee boat and the course side of the starting mark.
- 9.3. Five (5) or more registered Double-Handed Division entries will qualify for a separate start. Otherwise, the Double-Handed Division will start with the Single-Handed Division.

10. THE FINISH

- 10.1. The finishing line is between a staff displaying a BLUE flag on the race committee boat and the course side of the finishing mark.

11. PENALTIES

- 11.1. PENALTIES AT THE TIME OF THE INCIDENT - RRS 44.1 is changed so that the Two-Turns Penalty is replaced by the One-Turn Penalty.
- 11.2. PENALTIES TAKEN AFTER A RACE - RRS Appendix V2 applies.

12. TIME LIMITS

- 12.1. The time limit for the first boat to finish each race is 60 minutes.
- 12.2. Boats failing to finish within 20 minutes after the first boat in each Division sails the course and finishes will be scored Time Limit Expired (TLE) without a hearing. The scoring abbreviation TLE is added to A10.
- 12.3. All boats who are scored TLE will received a score equal to the number of boats that have finished plus two (2), but no more than DNF. This changes RRS 35, A5.1 and A5.2.
- 12.4. If a boat in last place in a race is delaying the start of another race, the race committee may terminate the race and score that boat in the place she would have finished.

2022 Weta North American Championship Sailing Instructions

13. PROTESTS AND REQUESTS FOR REDRESS

- 13.1. A boat intending to protest shall notify the Race Committee of its intention and the identity of the protested boat(s) immediately after finishing. This changes RRS 61.
- 13.2. Protest forms and Post-Race Penalty forms are available from the Race Committee. Protests shall be delivered to the Protest Committee desk within the protest time limit.
- 13.3. The protest time limit is 60 minutes after the Committee Boat has docked for the day. The same protest time limit applies to all protests by the race committee and protest committee and requests for redress.
- 13.4. Notices of scheduled protest or requests for redress hearings will be posted within 10 minutes of the protest time limit to inform competitors of hearings in which they are parties or may be parties affected by a request for redress.
- 13.5. Hearings will be held in a nearby location. The specific location will be posted on the Notice Board with the schedule of the hearings.
- 13.6. Notices of protests by the race committee, protest committee or technical committee will be posted on the official notice board to inform boats under rule 61.1(b) and 61.1(c).
- 13.7. Only the RC or PC may protest a boat under SI Rule 14. This is an addition to rule 60.

14. SAFETY REGULATIONS

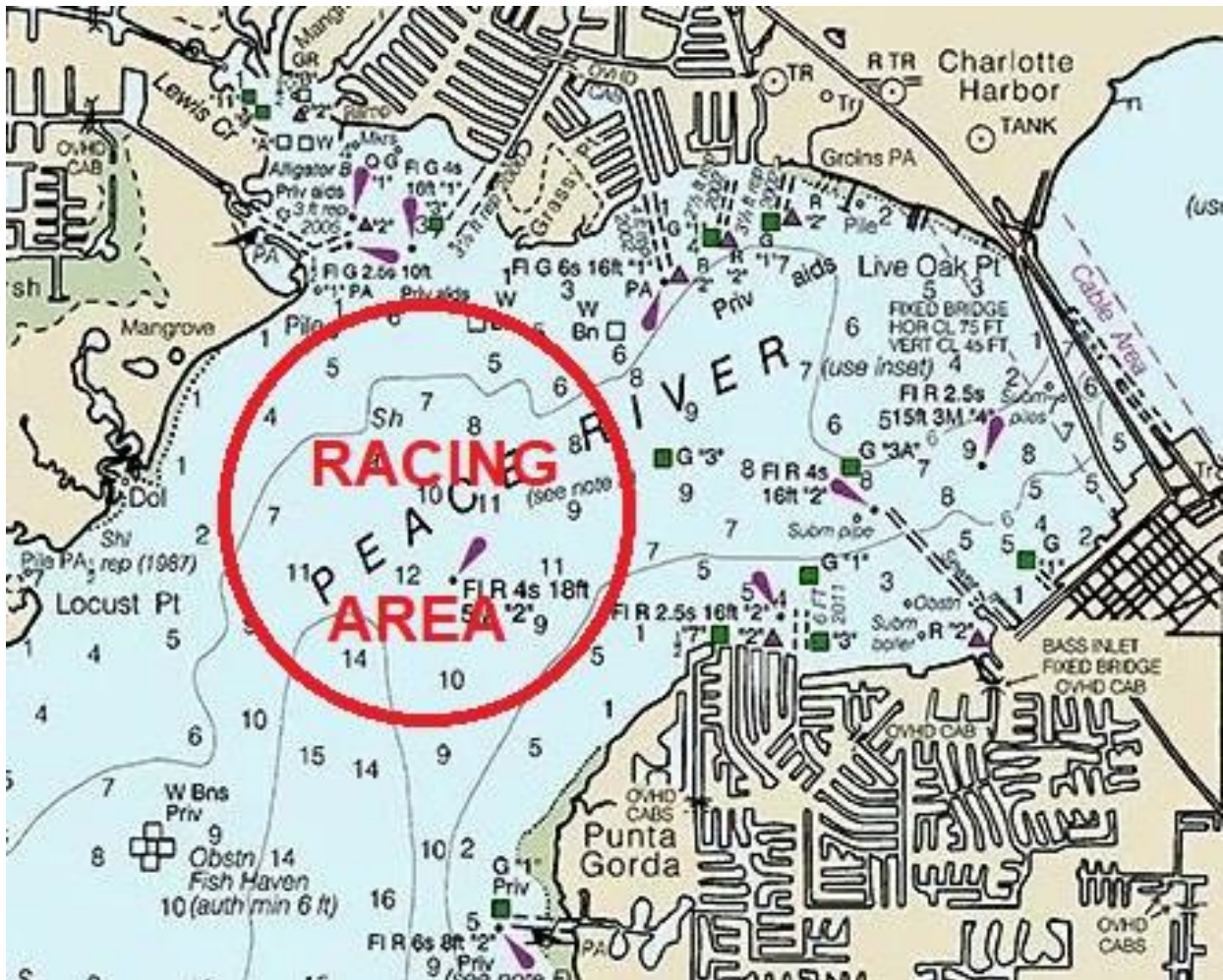
- 14.1. All boats shall check in with the Race Committee signal boat prior to the first warning of the day. [DP]
- 14.2. A boat that retires from a race shall notify the race committee as soon as possible. [DP]
- 14.3. Commercial Shipping traffic has right-of-way and is a privileged vessel. [DP]

15. RADIO COMMUNICATIONS

- 15.1. Radio communications to competitors will be on VHF channel 71.
- 15.2. Radio communications from racing boats to any Race Committee boat shall be limited to emergencies and notification of retirement from racing.

2022 Weta North American Championship
Sailing Instructions

Attachment One
Weta North American Championship
SAILING AREA

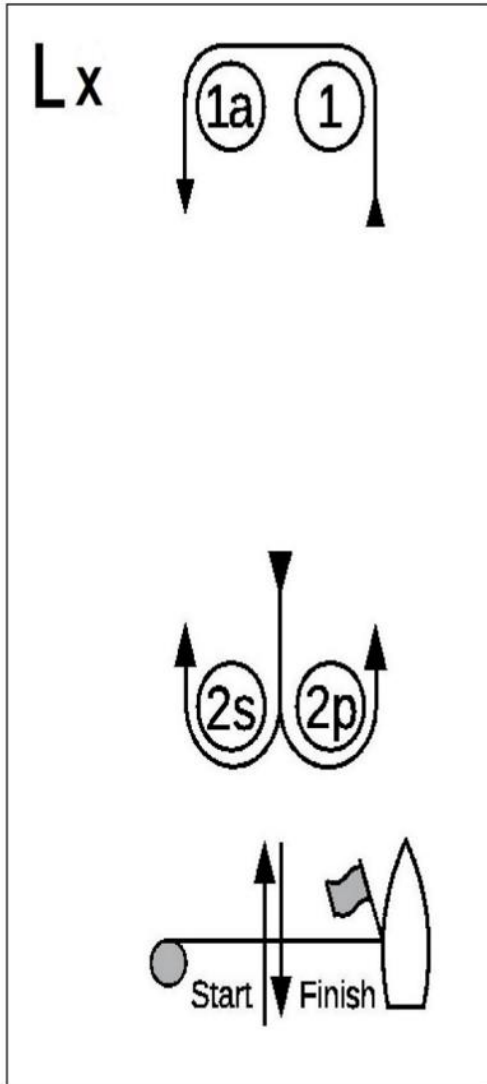


Circle locations are approximate, and this chart is intended for reference use only, not navigation.

2022 Weta North American Championship
Sailing Instructions

Attachment Two

Weta North American Championship
Course Diagram



Course L x – Windward/Leeward with Offset Mark, Leeward Finish	
<i>Signal</i>	<i>Mark Rounding Order</i>
L 2	Start – 1 – 1a – 2s/2p – 1 – 1a – Finish
L 3	Start – 1 – 1a – 2s/2p – 1 – 1a – 2s/2p – 1 – 1a – Finish
L 4	Start – 1 – 1a – 2s/2p – 1 – 1a – 2s/2p – 1 – 1a – 2s/2p – 1 – 1a – Finish