

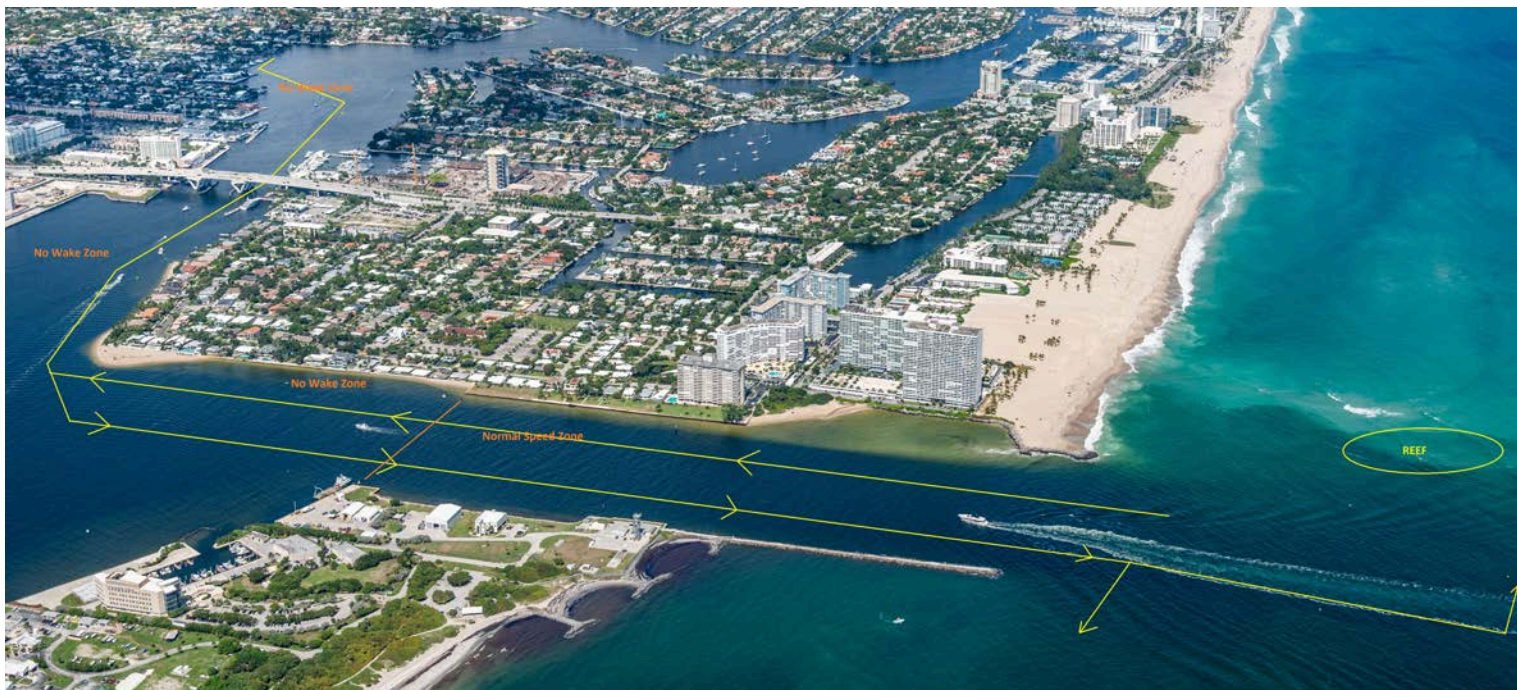


Mandatory Safety Notice

The Race Committee or Protest Committee, but not another competitor, may protest for violations of these regulations.

1. Sailing or Towing to the Racecourse:

- a. The entire area in front of LYC, the bridge, the fuel dock, and inlet is a “no wake zone”. There are a pair of signs halfway out the inlet indicating when it is allowable to “resume normal safe operation”. When returning from the ocean, you must slow to idle/no wake speed when approaching these signs. Law Enforcement in South Florida considers any boat operating on or near plane to be violating a no wake zone. You must operate a coach or support boat at idle at all times when transiting through the inlet to and from the race course.
- b. There is a shoal to the East of the club’s docks, stay near the east docks as you sail or tow south towards the bridge. Once you get to the south end of the docks, you may go out the well-marked LYC access channel to the Intracoastal Waterway channel. The water to the south of the LYC channel is sufficient for safe sailing.
- c. Before you get to the bridge, you must cross the Intracoastal and go through the **East span** of the bridge as you head south. Under no circumstances are you to go through the West span: it is against Homeland Security rules and Law Enforcement has the ability to “terminate your voyage” and patrols the prohibited zone 24 hours/day. The center span is heavily trafficked and not advised.
- d. **When heading south after the inlet:** When you turn east again to head out to the inlet, we recommend that you cross early to the south side of the inlet. It is imperative that you stay out of the center of the Port Everglades Channel at all times, except when safely crossing the channel in the absence of ship and boat traffic.
- e. **When heading north after the inlet.** When you turn east to head out the inlet, stay along the north side of the channel. Proceed past the end of the jetties, past marker “4” and head toward buoy “2”. To the north there is an unlit stake shoal marker. Stay in the channel, approach buoy “2” until east of this marker, then turn left and stay offshore of the stake marker.



2. Other Safety and Courtesy Concerns:

- a. When you reach the Atlantic Ocean, be aware of dive flags. A diver down flag is a flag used on the water indicating that there is a diver below. It is red with a white stripe from the upper left corner to the lower right corner. Florida Law requires that boaters must make reasonable efforts to stay 300 feet/100 yards away from diver-down flags. Divers also swim from the beach, with small kayaks or without vessels, so please take care to be aware of divers.
- b. There are a series of white dive balls anchored north and south approximately 1/2 mile offshore and running from the inlet to the race area. It is suggested that you avoid this area.
- c. Stay out of the way of the cruise ships, water taxis, commercial fishing boats, and pilot boats.
- d. All competitors shall at all times carry a towline according to Nacra 15 Class rules (15 meters in length, 8 mm minimum diameter).

3. Environmental Concerns: Anchoring of event vessels on Coral Reefs, Hardbottom or Sea grass is prohibited under Florida Law. Spectator, support and/or coach vessels are prohibited from anchoring anywhere in the vicinity of the event. If you encounter any Manatees, Sea Turtles or Sawfish during your sailing, they deserve special attention, and you must avoid any collision or contact. Please read and observe the local and federal rules governing our Florida Treasures. Additionally, special provisions are in effect for the protection of, including but not limited to Manatee, Sea Turtle & Sawfish, as well as critical habitat, including but not limited to Johnson Sea Grass, Stag horn and Elkhorn Corals.

4. VHF. All support and spectator boats must monitor the designated VHF channel for requests from the Race Committee to assist with fleet safety and to receive information relative to the intentions of the Race Committee. Emergency VHF channel is 16, and the shipping channel is 14.