



**74th Annual Labor Day Regatta
September 3rd – 4th, 2022**



Sarasota Sailing Squadron & Sarasota Youth Sailing

**RED, WHITE AND BLUE FLEET
SAILING INSTRUCTIONS Amendment II 8:14am
VHF Ch 5**

1 RULES

- 1.1 The regatta will be governed by the rules as defined in The Racing Rules of Sailing
- 1.2 SI breaches for which a discretionary penalty may be applied by the protest committee are designated by “[DP]” Discretionary Penalty.

2 NOTICES TO COMPETITORS

Notices to competitors will be posted on the official notice board located at the Squadron Pavilion.

3 CHANGES TO SAILING INSTRUCTIONS

Any change to the sailing instructions will be posted before 0900 on the day it will take effect, except that any change to the schedule of races will be posted by 1800 on the day before it will take effect.

4 SIGNALS MADE ASHORE

- 4.1 Signals made ashore will be displayed ashore from the Squadron flagpole.
- 4.2 When flag AP is displayed ashore, ‘1 minute’ is replaced with ‘not less than 60 minutes’ in the race signal AP.


5 SCHEDULE OF RACES

- 5.1 To alert boats that a race or sequence of races will begin soon, the orange starting line flag will be displayed with one sound at least 1 minute before a warning signal is made.
- 5.2 As many races as possible are scheduled. One race will constitute a regatta.
- 5.3 Flag A displayed with no sound while boats are finishing means no more racing today.
- 5.4 Races are scheduled as follows: No warning will be made after 1400 on the last day.

Friday Sept. 2nd	1600 – 1800	Check In
Saturday Sept. 3rd	0800-0900	Check In
	930	Skippers Meeting
	1045	First Warning
Sunday Sept. 4th	1000	First Warning

6 CLASS FLAG

Class flag is as follows:

OPTI RWB Fleet	OPTI Logo on a white flag	
----------------	---------------------------	---

7 THE COURSES

- 7.1 The course diagrams are on the pages following SI 16. They show the courses, the order in which marks are to be passed, and the side on which each mark is to be left.
- 7.2 No later than the warning signal, the race committee signal vessel will display the course designation.
- 7.3 A 10-degree allowable mark adjustment during a race without any change signal or mark change.

8 MARKS

- 8.1 Original rounding marks will be ~~Yellow~~ **Orange** inflatable tetrahedrons. New marks as provided in SI 10 will be Green inflatable tetrahedrons. There will be no Offset Mark 1a with a new Mark 1 on Courses W1 or W2.
- 8.2 Offset and Finish Marks will be a small ball type mark.

9 THE START

- 9.1 Races will be started by using RRS 26 with the warning signal made 5 minutes before the starting signal.
- 9.2 The starting line will be between a staff displaying an orange flag on the race committee vessel on one end of the starting line and the staff displaying an orange flag on an anchored race committee vessel on the opposite end of the starting line.
- 9.3 Race Committee will not hail the sail numbers of the boats OCS or subject to starting penalties.
- 9.4 A boat that does not start within 4 minutes after her starting signal will be scored Did Not Start without a hearing. This changes RRS A5.1

10 CHANGE OF THE NEXT LEG OF THE COURSE

To change the next leg of the course, the race committee will lay a new mark (or move the finishing line) and remove the original mark as soon as practicable. When in a subsequent change a new mark is replaced, it will be replaced by an original mark.

11 THE FINISH

The finishing line will be between a staff displaying a blue flag on the race committee vessel and the course side of the finishing mark.

12 TIME LIMITS

12.1 The following time limits will apply:

Race Time Limit Is 40 minutes	Time limit for the first boat to sail the course and finish.
Finishing Window is 15 minutes	Time limit for boats to finish after the first boat sails the course and finishes.

12.2 Any boat that starts and does not finish within the Finish Window will be scored TLE and given points equal to two more than the last boat to finish within the Finish Window. This changes RRS 35,63.1 and A5.

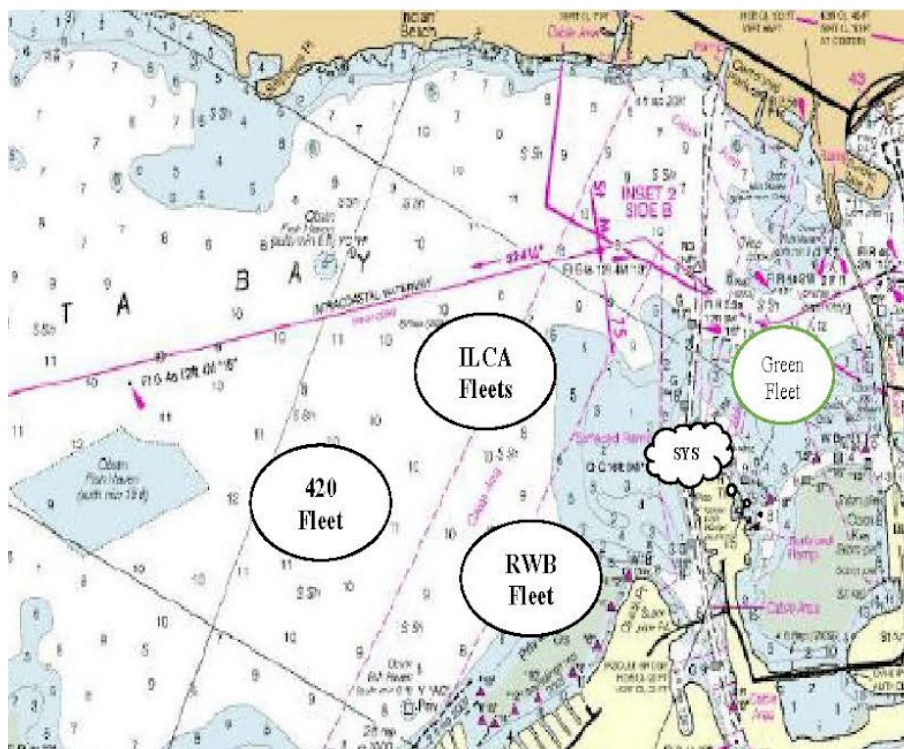
13 PROTESTS AND REQUESTS FOR REDRESS

- 13.1 Protest forms are available at the race office. Protests and requests for redress or reopening shall be delivered there within the appropriate time limit.
- 13.2 The protest time limit is 60 minutes after the last boat has finished the last race of the day or the race committee signals no more racing today whichever is later. The time will be posted on the notice board.
- 13.3 Notices will be posted no later than 10 minutes after the protest time limit to inform

competitors of hearings in which they are parties or named as witnesses and where the hearings will be held. Hearings may be a mix of in-person and videoconference.

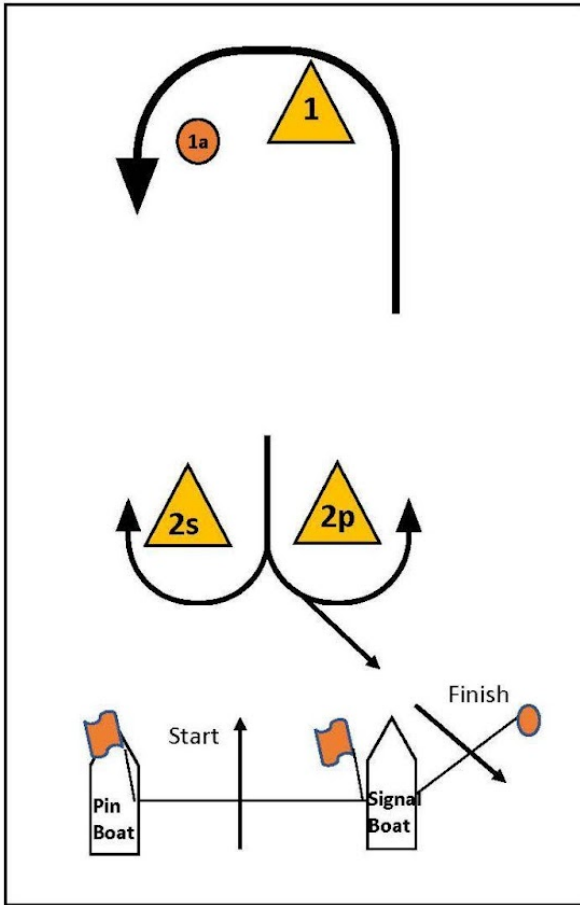
- 13.4 Notices of protests by the race committee, technical committee or protest committee will be posted to inform boats under RRS 61.1(b).
 - 13.5 On the last scheduled day of racing a request for redress based on a protest committee decision shall be delivered no later than 30 minutes after the decision was posted. This changes RRS 62.2.
- 14 SAFETY REGULATIONS**
- 14.1 Check-In with the Signal Boat before the initial warning signal of the first race of each day by sailing near the Signal Boats stern on a starboard tack and hailing your sail number until acknowledged by the Signal Boat. Failure to check in may result in a penalty. [DP]
 - 14.2 A boat retiring from the race shall notify a Race Committee vessel before leaving the course, or, when that is not possible, notify the Race Office immediately upon arriving ashore. [DP]
 - 14.3 [DP] All competitors shall always wear personal floatation devices while afloat, except briefly while changing or adjusting clothing and personal equipment. Flag Y will not be displayed.
- 15 SUPPORT BOATS**
- 15.1 Support vessels shall monitor VHF Channel # 5
 - 15.2 All support boats equipped with an emergency cutoff switch, the operator shall always wear the associated lanyard when in the vicinity of competitors, the sailing area, and the Squadron. [DP].
 - 15.3 Team leaders, coaches, and other support persons shall stay outside areas where boats are racing from the time of the preparatory signal for the first class to start until all boats have finished or retired or the race committee signal postponement or abandonment. [DP]
 - 15.4 All coach boats and other support boats shall come to the aid of any competitor in distress or requesting assistance. [DP]
 - 15.5 All support boats shall comply with US Coast Guard regulations. [DP]
- 16 PRIZES**
- Prizes will be given as stated in the NOR.

RACING AREA



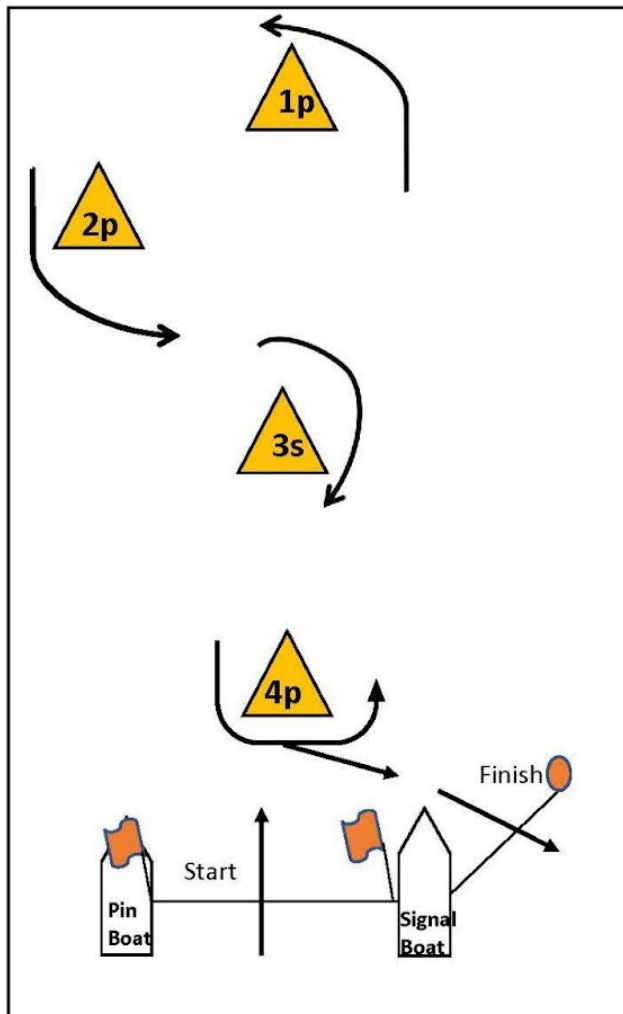
COURSE DIAGRAM

Windward-Leeward, Leeward Finish



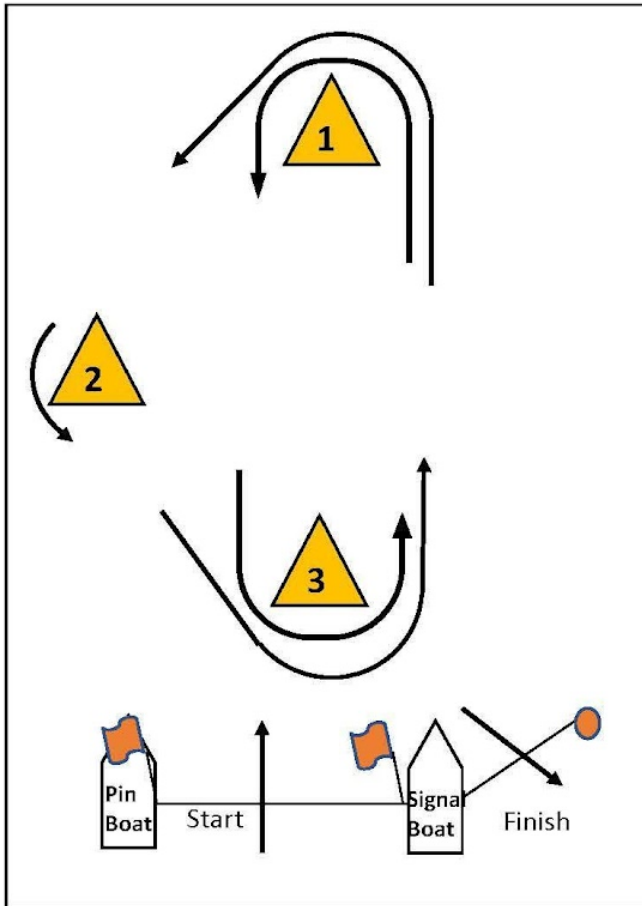
Course W – Windward/Leeward with Offset Mark, Reach Finish	
Signal	Mark Rounding Order
W1	Start – 1- 1a – 2P - Finish
W2	Start – 1- 1a – 2S/2P – 1 – 1a – 2P - Finish

COURSE DIAGRAM



Course P – Windward/Reach/Gybe Mark to starboard/Leeward/ Reach Finish	
Signal	Mark Rounding Order
P1	Start – 1- 2 – 3s – 4 -Finish
P2	Start – 1- 2 – 3s – 4 - 1- 2 – 3s – 4 - Finish

COURSE DIAGRAM



Course T – Triangle, Reach Finish	
Signal	Mark Rounding Order
T1	Start – 1- 2 -3 – Finish
T2	Start – 1- 2 – 3 – 1 – 3 - Finish