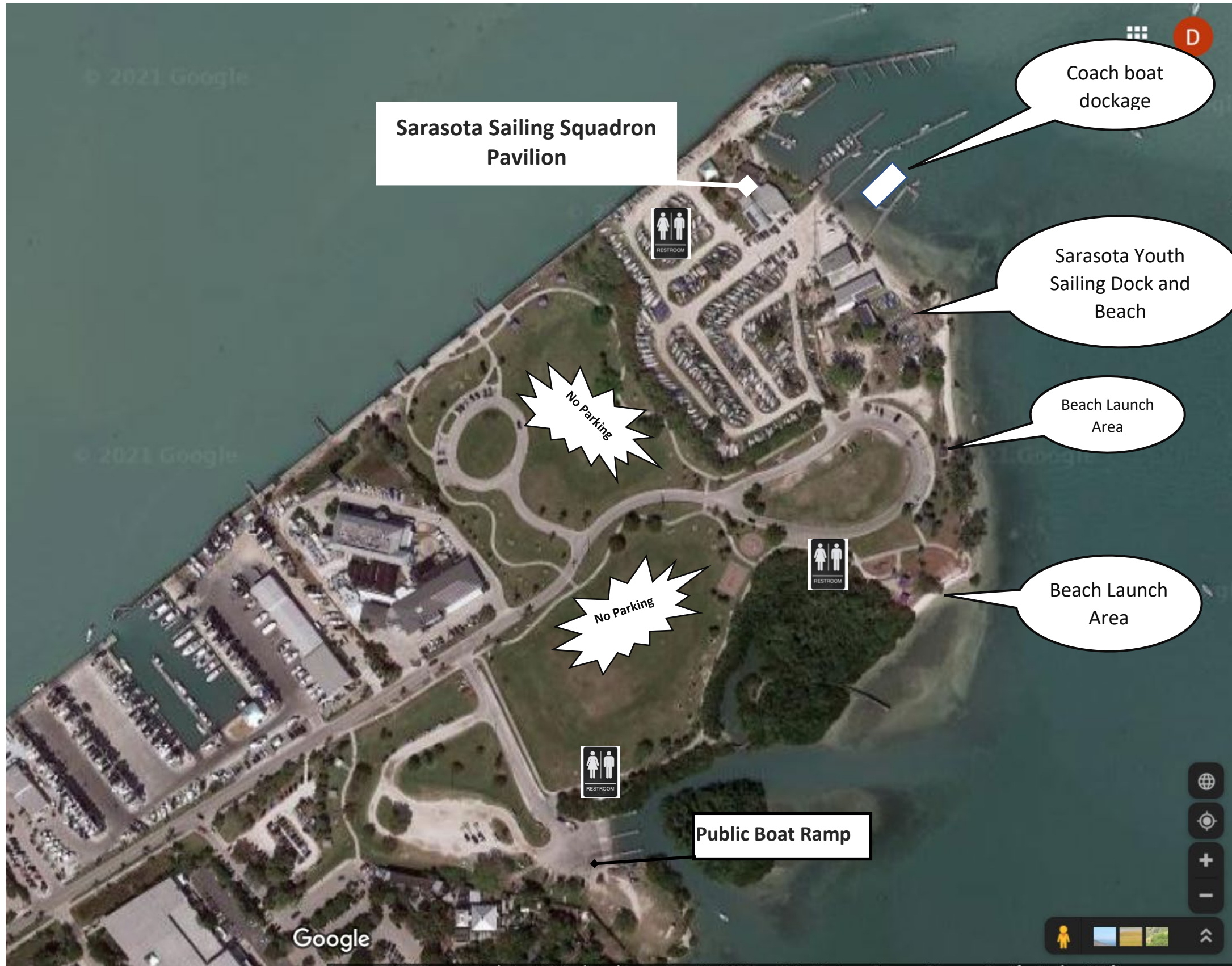


Overall View

Including Boat Ramps, Beach Launch Area and Approximate Race Course Areas



Ken Thompson Park View

Please do not park on sidewalks, use parking spots when available.

Please use the public boat ramp to launch power boats.

There is no parking inside the gates of the Club.



Ken Thompson Park is a public park for Sarasota County and City residents, we share it with many other enthusiasts of Sarasota Bay.

We have found if we keep a lane clear in the center grass area, we can accommodate more vehicles. There is plenty of room to beach launch.

The 'Team' Areas are not assigned. They are suggested areas for your team to set up and launch from.

Vendors
Breaking Waves Coffee
Dinner -Walt's Seafood Market

Sarasota Sailing Squadron Pavilion

Food Trucks/Vendors

Food Trucks/Vendors

Coach boat dockage only

Coach boats can only be docked or rafted up between the two most - southern docks. We cannot accommodate spectator boats on our docks.

Sarasota Youth Sailing Dock and Beach

Sarasota Sailing Squadron Pavilion
Check In
Official Notice Board
Saturday Night Dinner
Sunday Awards

No Parking

