



TAMPA YACHT & COUNTRY CLUB

Gasparilla Regatta

Tampa Yacht & Country Club

14-15 Jan 2023

1. RULES

The regatta will be governed by the rules as defined in *The Racing Rules of Sailing and the IODA Class Rules*.

2. NOTICES TO COMPETITORS

Notices to competitors will be posted on the official notice board located at the Sailing Office.

3. CHANGES TO SAILING INSTRUCTIONS

Any change to the sailing instructions will be posted before 0800 on the day it will take effect, any change to the schedule of races will be posted by 2000 on the day before it will take effect.

4. SIGNALS MADE ASHORE

1. Signals made ashore will be displayed at the club flagpole.
2. When flag AP is displayed ashore, '1 minute' is replaced with 'not less than 45 minutes' in the race signal AP.

5. SCHEDULE OF RACES

Saturday 14 th		Sunday 15 th	
Check in	0800		
Skippers Meeting	0900		
First signal RWB/BIC/420/Laser	1000	First signal	0930
First Signal Green	1030	First signal Green	1000
		Last signal	1400

7. THE COURSE

1. Appendix A shows the location of the racing areas.
2. The diagrams in Appendix B show the courses for each Fleet, including the approximate angles between legs, the order in which marks are to be passed, and the side on which each mark is to be left.
3. Courses will not be shortened. This changes RRS 32.
4. Legs of the course will not be changed after the preparatory signal. This changes RRS 33.

8. THE START

1. Races will be started by using RRS 26.

2. The starting line will be between a staff displaying an orange flag on the committee boat and the course side of the port-end starting mark.
3. A boat may not start more than 4 minutes after her starting signal.

9. THE FINISH

1. The Finishing line will be between a staff displaying an Orange Flag and the course side of the port end finishing mark.

10. TIME LIMITS AND TARGET TIMES

1. The target time for RWB/420/Bic races will be 30 minutes
2. The Target time for Green Fleet races will be 25 minutes.
3. Boats failing to finish within 20 minutes after the first boat sails the course and finishes will be scored in place.

11. PROTESTS AND REQUESTS FOR REDRESS

1. Protest forms are available at the sailing office. Protests and requests for redress or reopening shall be delivered there within the appropriate time limit.
2. The protest time limit is 30 minutes after the Race Committee returns to the dock. The protest time limit will be posted on the official notice board.
3. Notices will be posted no later than 30 minutes after the protest time limit to inform competitors of hearings in which they are parties or named as witnesses. Hearings will be held in the protest room, located at the Dockmaster's office.

12. SCORING

1. 1 race shall constitute a series.
2. When fewer than 6 races have been completed, a boat's series score will be the total of her race scores. When from 6 to 10 races have been completed, a boat's series score will be the total of her race scores excluding her worst score. When 11 or more races have been completed, a boat's series score will be the total of her race scores excluding her two worst scores.

13. SAFETY REGULATIONS

1. Prior to the first warning signal each day competitors shall sail past the stern of the race committee on starboard tack and hail her sail number.
2. All competitors shall wear a PFD at all times while racing (except while changing clothes or gear).

14. SUPPORT BOATS

1. Coaches shall be permitted to coach the back half of the Green fleet.
2. Boats may be stored on F dock, the southernmost dock in the TYCC Marina.
3. Power vessel operators must wear their Kill Cord.

15. TRASH DISPOSAL

1. Trash may be disposed of aboard any TYCC vessel.
2. Competitors shall not litter in the bay, any sailor caught littering will be disqualified.

16. PRIZES

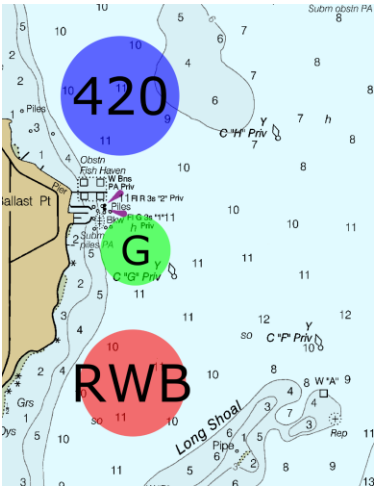
Prizes will be awarded as follows:

RWB Overall	1 st , 2 nd , 3 rd
Red, White and Blue	1 st
Bic	1 st
C420	1 st , 2 nd , 3 rd

17. DISCLAIMER OF LIABILITY

Competitors participate in the regatta entirely at their own risk. See RRS 3, Decision to Race. The organizing authority will not accept any liability for material damage or personal injury or death sustained in conjunction with or prior to, during, or after the regatta.

Appendix A: course Areas



Appendix B: Courses

RWB/BIC/Laser/420	Green
A diagram showing a course layout with two loops. Loop 1 is a small loop at the top. Loop 2 is a larger loop below it. A dashed blue line labeled 'Start/Finish' runs horizontally across the bottom, ending at a grey archway. A red dot marks the start of the line.	A diagram showing a course layout with three loops. Loop 1 is a small loop at the top. Loop 2 is a larger loop in the middle. Loop 3 is a smaller loop at the bottom. A dashed blue line labeled 'Start/Finish' runs horizontally across the middle, ending at a grey archway. A red dot marks the start of the line.
W1 Start-1-2-Finish	T Start-1-2-3-Finish
W2 Start-1-2-1-2-Finish	