



NOTICE OF RACE
GULF COAST SPORTBOAT CHAMPIONSHIP
GYA US Sailing Adult Championship Qualifier
BAY-WAVELAND YACHT CLUB
Bay St. Louis, MS
August 13-14, 2022



1. RULES

- a. The event will be governed by the rules as defined in *The Racing Rules of Sailing* (RRS).
- b. Appendix V will apply.

2. NOTICE TO COMPETITORS

- a. Notice to competitors will be posted on Regatta Network and/or the official notice board.
- b. At the end of the day, RC will post docking time, reported protests and any boats not scored in their finishing positions.
- c. The official notice board will be located upstairs.
- d. Race Committee will be communicating on VHF 72.

3. CHANGES TO SAILING INSTRUCTIONS

- a. Any change to the sailing instructions will be posted before 1200 on the day it will take effect.
- b. Any change to the schedule of races will be posted by 1900 on the day before it will take effect.

4. SIGNALS MADE ASHORE

- a. Signals made ashore will be displayed on the flagpole located on the front lawn.
- b. The warning signal for the next race will be made not less than fifteen (15) minutes after "AP" is lowered.

5. SCHEDULE OF RACES

- a. Ten (10) races are scheduled.
- b. Saturday
 - 5.2.1 0930-1025 Check-In and Late Registration
 - 5.2.2 1100 Competitors' Meeting
 - 5.2.3 1300 First Warning Signal of the Day
- c. Sunday
 - 5.3.1 1100 First Warning Signal of the Day
 - 5.3.2 1600 No race will Start after this Time
 - 5.3.3 Trophy Ceremony following all races
- d. To alert boats that a race will begin soon, the orange starting line flag will be displayed with one sound at least one (1) minutes before a warning signal is made.

6. CLASS FLAGS

- a. Class Flag will be shown at Competitors' Meeting.

7. COURSES

- a. Sport Boat: Windward-Leeward Twice Around (4 legs) per the diagram. Course will not be posted/displayed from the Race Committee boat. This changes Standard Sailing Instructions.

8. MARKS

- a. Windward mark will be orange tetrahedron with orange offset ball.
- b. Leeward mark will be a gate with orange tetrahedrons.
- c. Start/Finish line mark will be a large orange ball or RC vessel flying the appropriate flag.
- d. New marks will be yellow tetrahedrons.

9. THE START

- a. Races will be started using RRS 26.
- b. The starting line will be between a staff displaying an orange flag on the race committee vessel and the course side of the starting mark.

10. CHANGE OF THE NEXT LEG OF THE COURSE

a. To change the next leg of the course, the race committee will lay a new mark or move the finishing line and remove the original mark as soon as practicable. When in a subsequent change a new mark is replaced, it will be replaced by an original mark.

11. THE FINISH

a. The finishing line will be between an orange staff displaying a blue flag on the race committee vessel and the course side of the finishing mark.

9. RECALLS

a. In an addition the race committee will hail the boat's sail number and or bow number on VHF 72. The delay of such a hail or the failure of a competitor to hear such a hail shall not be grounds for redress. This changes Rule 62.1(a).

10. CHANGE OF THE NEXT LEG OF THE COURSE

a. To change the next leg of the course, the RC will lay a new mark (or move the finish line) and remove the original mark as soon as practicable. When in a subsequent change a new mark is replaced, it shall be replaced by an original mark.

11. TIME LIMIT

a. Race Time limit to the first windward mark will be 30 minutes.
b. Race Time limit will be 1.5 hours. Boats failing to finish within 20 minutes after the first boat sails the course finish will be scored TLE (+2).

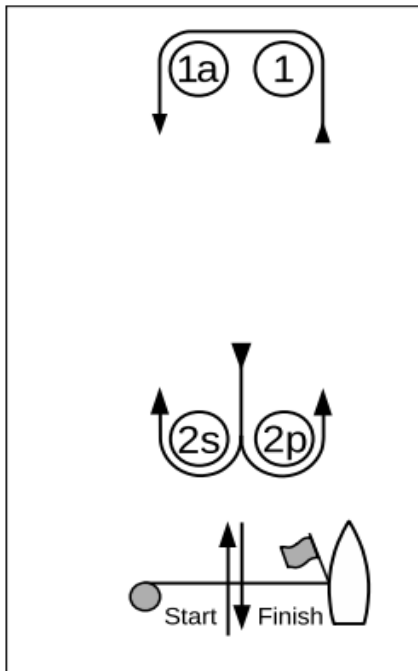
12. PROTESTS AND REQUEST FOR REDRESS

a. A protesting boat shall notify the Race Committee of its intent protest at the finish of the race or unable to finish as soon as possible by informing the Race Committee of Protesting Boat and Protested Boat.

13. SCORING

a. Scoring will be the low point system of Appendix A. A competitor will be allowed to discard one (1) race, if seven (7) or more races are scored.

Course Diagram



Course LA – Windward/Leeward with Offset Mark, Leeward Finish	
Signal	Mark Rounding Order
	Start – 1 – 1a – 2s/2p – 1 – 1a – Finish