

# STINGRAY POINT REGATTA

September 2<sup>nd</sup> - 4th 2022

Fishing Bay Yacht Club, Deltaville, VA

## Sailing Instructions

### 1. RULES

**1.1** The regatta will be governed by *The Racing Rules of Sailing, 2021- 2024*.

**1.2** If there are any discrepancies between the Notice of Race and the Sailing Instructions, the Sailing Instructions shall take precedence.

**1.3** US Sailing Prescriptions to 63.2, and 63.4 are deleted.

### 2. OFFICIAL NOTICES

**2.1** The Official Notice Board will be located on the front porch of the main FBYC clubhouse.

**2.2** Notices affecting the day's races will be posted by 1000 on the day they take effect. Notices affecting the schedule will be posted by 1800 on the day before they take effect.

**2.3** If a notice is posted, Code Flag "L" will be displayed on the RC Signal Boat, *Mr Roberts*, at her berth on the center dock in Jackson Creek.

**2.4** S.I.s will be available at Registration as well as posted on [www.regattanetwork.com](http://www.regattanetwork.com).

### 3. SIGNALS MADE ASHORE

**3.1** Signals made ashore will be displayed from *Mr Roberts*.

**3.2** Flag "AP" displayed with two sounds indicates "Racing is postponed" and that the Warning Signal will be made no earlier than 60 minutes after Code Flag "AP" is lowered with one sound. This changes RRS Race Signals "AP".

**3.3** Announcements regarding postponement ashore or relocation of racing will be made on Fleet Channel, **VHF-72**, approximately 90 minutes prior to scheduled Warning and repeated for as long as the RC feels is appropriate.

### 4. RADIO USE

**4.1** The RC will make courtesy announcements via **VHF-72**. Such announcements may include such things as courses to be sailed, timing information, reasons for unexpected delays, etc. These broadcasts are made as a courtesy only and in no way relieve competitors of their responsibility to monitor and respond to RC displays, flags and signals.

**4.2** The RC will only acknowledge transmissions regarding retirements, protests, or emergencies.

## 5. SCHEDULE

### Friday, September 2

0900 Check-In for Friday's Distance race (Main Clubhouse)  
1100 Skippers Meeting for Distance Race (Parking Lot Near Mr. Roberts)  
1300 Warning Signal for Distance Race (Piankatank River Fl Gr "3")  
1600-1745 Boat check-in for Stingray Point Regatta (Main Clubhouse)  
1800 Skippers Meeting for Saturday/Sunday racing (Main Clubhouse)  
1830 Distance Race Awards/Welcome Party, food, drink, music.

\*\* The Friday Distance Race will be scored separately from the races held Saturday and Sunday and will not be counted towards the Brent Halsey, Jr. Memorial Trophy

### Saturday, September 3

1100 Warning Signal  
1700-1830 Reception  
1830-2230 Dinner

### Sunday, September 4

1100 Warning Signal  
Approx. 1530 Reception & Awards  
Evening

\*\* Multiple races will be attempted Saturday & Sunday, wind & weather permitting.

\*\* Flag "A" displayed w/ no sound while boats are finishing means "No more racing today"

## 6. RACING AREA

**6.1** Racing will be conducted in the general area of Piankatank River Gr Fl "3". (Green Dolphin)

**6.2** If conditions warrant, at its own discretion, the RC may move racing inside Fishing Bay.

## 7. CLASSES, CLASS FLAGS & ORDER OF STARTS

**7.1** An official Scratch Sheet & intended Order of Starts will be posted on RegattaNetwork.

**7.2** The PHRF Cruising Class will be sailed and rated for non-spinnaker only and will sail courses from Appendix A.

**7.3** The Preliminary Class Flags are:

Fleet	Class Flag on RC	Backstay
A1	Pink	Pink
A2	Light Blue	Light Blue
B	Purple	Purple
C	Yellow	Yellow
Cruising	Green	Green

**\*\* Class flags/streamers shall be displayed from a boat's backstay while racing.**

**8. COURSES** The courses to be sailed Friday will be as per **S.I. Appendix A**. Courses to be sailed Saturday and Sunday will be as per **S.I. Appendix S** for PHRF-Spinnaker fleets and **S.I Appendix A** will be used for the PHRF-Cruising fleet.

**8.1** Two weather marks will be used. The short mark will be set approx. 0.25 nm below the long mark.

**8.2** A Leeward Gate maybe used.

- The gate will be to weather of the Start Line.
- The angle of the gate may be adjusted at any time without signal.
- Should only one leeward mark be in place, boats shall round it to PORT.

**8.3** Courses to be sailed will be displayed from the RC Signal Boat prior to Warning.

- Top line = Fleets racing
- Second line = Course each fleet will race
- Third line = Magnetic bearing & distance to the long weather mark.
- The short weather mark will be downwind of the long weather mark.

**8.4**

**Example:**

<b>1</b>	<b>2</b>	<b>3</b>	<b>4</b>
<b>WL4</b>	<b>W4</b>	<b>W4</b>	<b>A</b>
<b>300</b> <b>1.1</b>			

**8.5** Courses for the Cruising Class will be started from the same starting line as the rest of the fleets. Government marks will be used and the course will be selected from the courses listed in Appendix A below.

**\*\* Refer to Appendix S for descriptions and course diagram**

## **9. MARKS**

**9.1** The **long weather mark** will be an orange tetrahedron.

**9.2** The **short weather mark** will be a 3' orange tomato.

**9.3** The **change mark** will be a yellow inflatable.

**9.4** The **gate marks** will be orange cylinders.

**9.5** The **starting mark** will be a yellow inflatable.

**10. CHECK-IN** Prior to the Warning Signal for her first race of each day, each boat shall pass by the stern of the RC Signal Boat and hail her name and/or sail number until acknowledged by the RC.

## **11. THE START**

**11.1** Races will be started in accordance with RRS 26 as modified in Instruction 11.2 below.

**11.2** Approximately one (1) minute prior to the beginning of a starting sequence, the RC will make an Attention Signal consisting of a series of short sounds. This is not a timed signal.

**11.3** The starting line will be between the staff displaying an orange flag on the RC Signal Boat at the starboard end of the line and an inflatable mark at the port end.

**11.4** A boat starting more than five (5) minutes after her starting signal shall be scored Did Not Finish

(DNF) without a hearing. This changes RRS A4 and A5.

**11.5** Friday Distance Race – The start line will be between a staff displaying an orange flag on the RC Signal boat on the starboard end and government mark FL G 19 ft. 4M “3” (FBYC “C”).

## **12. RECALLS**

**12.1** Individual recalls will be signaled in accordance with RRS 29.1. Additionally, the RC will attempt to hail premature starters via **VHF-72**.

**12.2** Failure of this transmission to be made or received, promptness of the notification, or the position of a boat in the sequence of notifications, will not be grounds for granting redress. This changes RRS 61.1(a)

## **13. COURSE CHANGE AFTER START**

**13.1** To change the next leg of the course, the RC will set one change mark for all racers and remove the original marks as soon as practicable.

**13.2** The direction of the change will be signaled in accordance with RRS 33(a)(2), i.e. a red pennant indicates the change is to PORT or a green pennant indicates it is to STARBOARD.

## **14. THE FINISH**

**14.1** Saturday/Sunday Races - The finish line will be between the staff displaying a BLUE flag on the RC Boat and the starting mark.

**14.2** Friday Distance Race – The finish line will be between a staff displaying a blue flag on the RC Signal Boat and government mark Q G 15 ft. 4M “5” (FBYC “A”).

## **15. PENALTIES**

**15.1** RRS 44.1 and 44.2 apply. No RRS 44.3 (Scoring Penalty) is available.

**15.2** If any boat collides with an RC boat and causes injury or serious damage on either vessel, her penalty is to retire immediately.

## **16. TIME LIMITS**

**16.1** The time limit for the Friday distance race is **3hrs** for the first boat in each fleet to sail the course and finish. Boats still racing but not finished within **1 hour** after the first boat in their fleet sails the course and finishes will be scored Time Limit Expired (TLE) without a hearing and scored one (1) point more than the number of boats who sailed the course and finished within the time limit. This changes RRS 35, A4 and A5.

**16.2** For PHRF-Spinnaker, the time limit for the Saturday/Sunday races is **2hrs** for the first boat in each fleet to sail the course and finish. Boats still racing but not finished within **45 minutes** after the first boat in their fleet sails the course and finishes will be scored Time Limit Expired (TLE) without a hearing and scored one (1) point more than the number of boats who sailed the course and finished within the time limit. This changes RRS 35, A4 and A5.

**16.3** For PHRF-Cruising, the time limit for the Saturday/Sunday races is **3hrs** for the first boat in each fleet to sail the course and finish. Boats still racing but not finished within **1 hour** after the first boat in their fleet sails the course and finishes will be scored Time Limit Expired (TLE) without a hearing and

scored one (1) point more than the number of boats who sailed the course and finished within the time limit. This changes RRS 35, A4 and A5.

**16.4** To facilitate sailing additional races or to complete daily scoring in a timely manner, a boat still racing whose finishing position can be reasonably determined may be called in by the RC. Such boat will be scored as finished and placed in a finish position. If another race is to be run, such boat shall proceed to the starting area as expeditiously as possible.

**17. RETIREMENTS** A boat that retires from a race or goes in between races shall immediately notify the RC and be acknowledged before leaving the racing area. This may be done via **VHF-72**.

## **18. PROTESTS**

**18.1** A boat intending to protest another boat or request redress for an incident occurring while racing shall so notify the RC Signal Boat immediately upon finishing or retiring. This notification must include the name and/or sail number of all boats being protested or the nature of the redress request and must be continued until acknowledged by the RC. This may be done via **VHF-72** or by passing close aboard the Signal Boat and hailing the information.

**18.2** Protests must be filed in writing with the Protest Committee within **60 minutes** of *Mr. Roberts* docking at FBYC. The Protest Time Limit will be posted on the Official Notice Board which will be located on the front porch of the main FBYC clubhouse. Protest forms will be available at the Official Notice Board and protests will be heard on the second floor of the main FBYC clubhouse. Protests received and time of hearing will be posted on the Notice Board/ Protest Drop Box located on the front porch of the Clubhouse within 15 minutes after the posted deadline.

**18.3** If the RC posts a list of boats scored OCS or ZFP prior to the Protest Time Limit, a request for redress based on the posted list shall be made no more than **15 minutes** after Protest Time. This changes RRS 62.2.

**18.4** A notice of protests filed and approximate hearing times will be posted within 15 minutes after the end of protest time. Such posting constitutes the notice for Race Committee or Protest Committee Protests required under RRS 61.1(b)

**18.5** No party may request re-opening of a hearing. This changes RRS66.

**18.6** On Sunday, a request for redress from a jury decision must be delivered no later than 20 minutes after the decision was posted. This changes RRS 62.2.

**18.7** US Sailing Prescriptions to RRS 63.2 and 63.4 are deleted.

**18.8** Protests received and time of hearing will be posted on the Official Notice Board within 15 minutes after the posted deadline. The protest hearings will be in the upstairs of the Main Clubhouse and will not start before the posted time but may start later. If parties are not present at the posted time, the hearing will start based upon the written protest form.

## 19. SCORING

**19.1** The regatta will be scored as per the Low Point Scoring System of RRS Appendix A, except that there shall be no throw-outs. A boat's score shall be the total of all her scores on Saturday & Sunday. This changes RRS A2.

**19.2** The completion of at least one race in a class constitutes a regatta.

**19.3** Time on time scoring shall be used.

**19.4** The Friday Distance Race will be scored separately from the races held Saturday and Sunday and will not be counted towards the Brent Halsey, Jr. Memorial Trophy.

**19.5** The Friday Distance Race will be scored using the 'Random Course' ratings.

**20. HAUL-OUT RESTRICTION** Boats shall remain in the water throughout the regatta, unless hauled with prior written approval from the PRO.

## 21. CREW LIMITS

**21.1** Class crew limits are in effect. There will be no weigh-in.

**21.2** Crew substitutions are allowed in all classes.

## 22. DISCLAIMER OF LIABILITY

Sailing is an activity that carries with it an inherent risk of damage and injury. Competitors participate in this regatta entirely at their own risk and are reminded to pay special attention to RRS 4, Decision to Race. The race organizers include the Organizing Authority, The Fishing Bay Yacht Club, Race Committee, Protest Committee, sponsors, volunteers, or any other affiliated organization or official who will not be responsible for damage to any boat or other property or the injury to any competitor, including death, sustained as a result of practice for or participation in this event during shore side or on-the-water activities. By participating in this event, each competitor agrees to release the race organizers from any and all liability associated with such competitor's participation in this event to the fullest extent permitted by law.

## 22. CONTACTS:

- |                          |                 |                |                    |
|--------------------------|-----------------|----------------|--------------------|
| - Event Chairman         | Elizabeth Staas | (804) 337-3694 | estaas@comcast.net |
| - Principal Race Officer | Mike Toms       | (540)748-0714  | mtoms@aol.com      |

## 23. AWARDS

**23.1** Overall results will be given for first, second, and third in each fleet, with all races considered separately.

**23.2** The Brent Halsey Jr. Memorial Trophy will be presented to the class winner based on the following:

- *Halsey Trophy Score* = (Class Score/Average Starters) times (Minimum Races/Class Races)

*Class Score* = total low point score of Class Winner as per S.I.s

*Average Starters* = average number of boats that started in that class

*Minimum Races* = number of races completed by class with fewest races completed

*Class Races* = number of races completed in class being scored

- \* Eligible class winners shall be the winners of classes that have been given a separate start and have had at least five (5) boats starting in every race.
- \* The intended purpose of the formula is to identify the class winner who has been most competitive as measured by the degree to which it has consistently been at the top of his class and the number of boats against which he has competed.

Sportsmanship Award. This award shall be given to a boat, individual, or other entity whose crew exhibits the highest degree of sportsmanship and spirit of Corinthian competition during the regatta

**STINGRAY POINT REGATTA**  
**APPENDIX A**  
**DISTANCE COURSES**  
**FOR FRIDAY'S Distance Race**  
**And**  
**PHRF-Cruising Class on Sat/Sun**

**COURSE A – APPROX. 17 NM**

<i><b>Marks of Course</b></i>	<i><b>Leave to</b></i>
Starting Line	
Piankatank R. G "1R" FI G 6s (FBYC "G")	Port
Rappahannock R "6R" FI R 4s (FBYC "K")	Port
Piankatank G "1P" FI G 2.5s (FBYC "E")	Starboard
Finish Line	

**COURSE B – APPROX. 14 NM**

<i><b>Marks of Course</b></i>	<i><b>Leave to</b></i>
Starting Line	
Piankatank G "1P" FI G 2.5s (FBYC "E")	Starboard
Chesapeake GC "41A" (FBYC "L")	Starboard
Piankatank R. G "3" FI G 4s (FBYC "C")	Port
Finish Line	

**COURSE C – APPROX. 12 NM**

<i><b>Marks of Course</b></i>	<i><b>Leave to</b></i>
Starting Line	
Rappahannock N"2R" (FBYC "H")	Starboard
Piankatank R. G "1R" FI G 6s (FBYC "G")	Starboard
Piankatank R. G "3" FI G 4s (FBYC "C")	Port
Finish Line	

**COURSE D – APPROX. 10 NM**

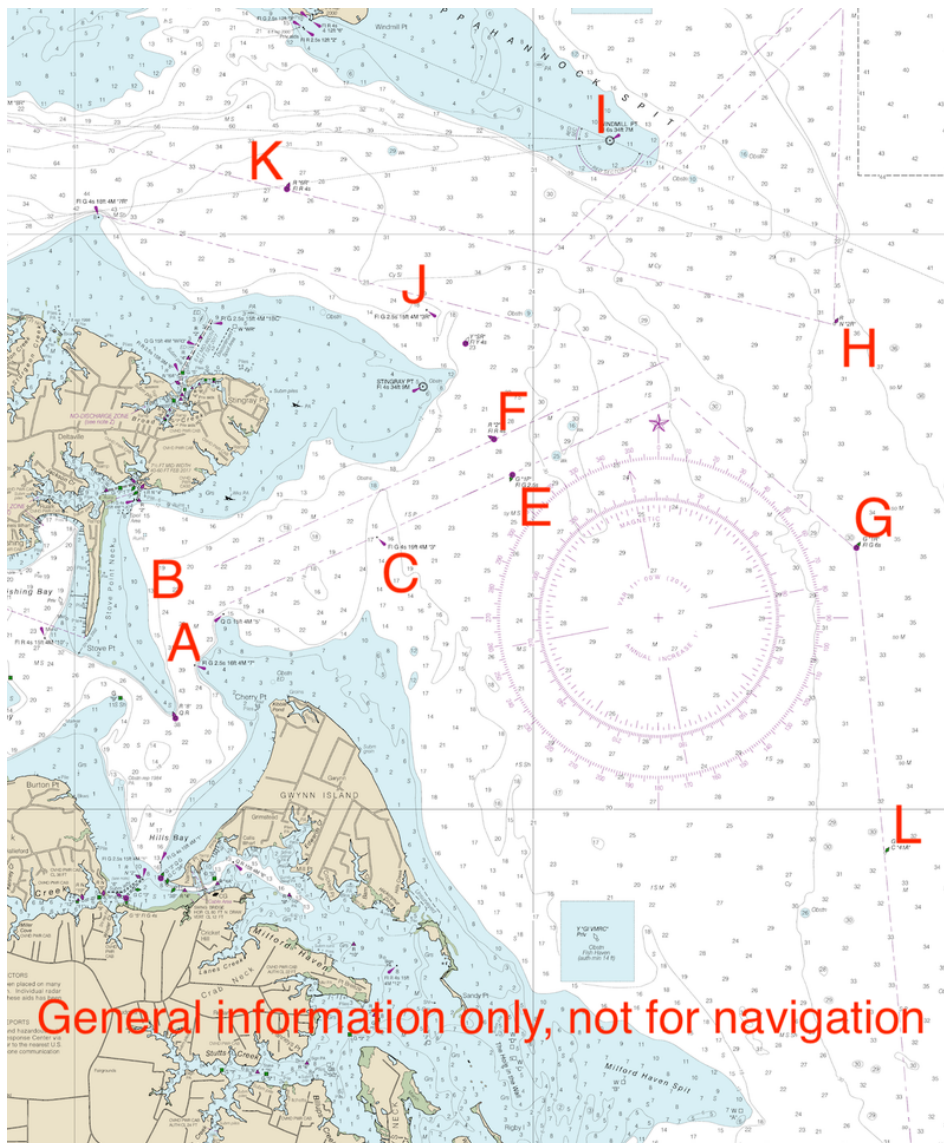
<i><b>Marks of Course</b></i>	<i><b>Leave to</b></i>
Starting Line	
Piankatank G "1P" FI G 2.5s (FBYC "E")	Starboard
Piankatank R. G "1R" FI G 6s (FBYC "G")	Starboard
Piankatank R. G "3" FI G 4s (FBYC "C")	Port
Finish Line	

**\*\* The course cannot be changed, but may be shortened at any rounding mark.**



### Marks of the Distance Courses

Letter	Location	Latitude	Long.	Label on Chart
A	Piankatank R.	37 31.698	76 18.376	Q G 15ft 4M "5"
C	Piankatank R.	37 32.367	76 16.703	FI G 4s 19ft 4M "3"
E	Piankatank R.	37 32.908	76 15.229	G "1P" FI G 2.5s
F	Piankatank R	37 33.224	76.15.421	R "2" FI R 4s
G	Rappahannock R	37 32.271	76 11.481	G "1R" FI G 6s
H	Rappahannock R	37 34.221	76 11.728	R N "2R"
I	Windmill Pt. Light	37 35.815	76 14.164	FI 6s 34ft 7M
J	Rappahannock R	37 34.509	76 19.164	FI G 2.5s 15ft 4M "3R"
K	Rappahannock R	37 35.398	76 17.676	R "6R" FI R 4s
L	Chesapeake Bay	37 29.613	76 11.185	G C "41A"



STINGRAY POINT REGATTA  
APPENDIX S  
(SATURDAY/SUNDAY COURSES)

\*\*The course to be sailed will be posted on RC Signal Boat prior to Warning



Long Weather Mark



Short Weather Mark



Leeward Gate



Start/Finish Line

\*\* The course to be sailed will be posted on the RC Signal Boat prior to Warning.  
Course Designations will be:

WL4 = Start - Mark 1 - Gate - Mark 1 - Finish (4 legs)

W4 = Start - Mark 2 - Gate - Mark 2 - Finish (4 legs)

\*\* All marks (except the Gate) shall be left to PORT

\*\* If the course is changed after the start, only one change mark will be set.

All boats shall use the one change mark.