



NOTICE OF RACE
Pensacola Yacht Club
2022 Couples Regatta (i.e., Double Handed)
A Really Fun Regatta
Saturday – August 20, 2022

1. RULES

- 1.1 This regatta shall be governed by rules as defined in the *Racing Rules of Sailing* (RRS).
- 1.2 The race(s) will be sailed under the current Pensacola Bay General Sailing Instructions (PBGSi) available online at: [Pensacola Yacht Club Racing Page](#).
- 1.3 Supplemental Sailing Instructions will be available online no later than 1800 on Friday, Aug. 19.

2. ELIGIBILITY, ENTRY AND FEE

- 2.1 Open to all PHRF and One Design boats with a minimum length of 19'.
- 2.2 Online Registration at <https://www.regattanetwork.com/html/calendar.php#>. Scroll down to the date of the event to find the link to the registration form.
- 2.3 Boats not registered before 1700 on Friday, August 19, are not eligible for entry into the regatta and will not be scored.
- 2.4 PHRF entries must have a valid PHRF Rating Certificate or accept a temporary, provisional rating as assigned by the RC.
- 2.5 Boats are restricted to 2 sailors (Double Handed Racing) on board.
- 2.6 Entry fee for all classes: \$35/Boat.

3. CLASSES

- 3.1 Classes may include PHRF and One-Design Classes (such as Vipers and Fish Class). Each class must have no less than 3 started boats to compete as a class. Any PHRF class with more than 8 boats may be divided into sub-classes at the discretion of the Race Committee (RC).
- 3.2 PHRF Spinnaker and Non-Spinnaker classes will be sailed under GYA PHRF handicapping.

4. NOTICES TO COMPETITORS.

- 4.1 Notices to Competitors will be posted on the Official Notice Board (ONB) on the Blue Porch. Competitors will be informed by text or email (indicated in the registration form) when a Notice to competitors is posted on the ONB.
- 4.2 Changes to the rules will be posted on the ONB before 0830am on the day it will take effect, except that any change to the schedule of races will be posted no later than 2000 on the day before it will take effect.
- 4.3 For an on the water change to the sailing instructions: "L" flag shall be displayed. The change will be announced on the designated VHF channel. (This changes RRS Race Signals)

5. SIGNALS MADE ASHORE

- 5.1 Signals made ashore will be displayed from a flagpole in the Pensacola Yacht Club lawn.
- 5.2 When flag AP is displayed ashore, '1 minute' is replaced with 'not less than 30 minutes' in the race signal AP. (This changes RRS Race Signals)

6 COMMUNICATION

- 6.1 [DP] All boats shall carry a VHF radio capable of communicating on channel 72. Channels 68, 69, and 71 may be used. (This changes Class Rule C5.2 (3))
- 6.2 On the water, the Race Committee (RC) will make courtesy broadcasts to competitors on VHF radio channel 72.
- 6.3 [DP] From the first warning signal until the end of the last race of the day, except in an emergency or as required by a rule, a boat shall not make voice nor data transmissions and shall not receive voice nor data communication that is not available to all boats.
- 6.4 The RC may broadcast the course, bearing and distance information before the warning signal, start times, starting infractions, and information important to racing. Failure of the transmission, failure of any boat to receive or properly interpret this information, or any errors or omissions on the part of the hailed messages shall not constitute grounds for granting redress. (This changes RRS 62.1(a))
- 6.5 Individual recalls and boats penalized under RRS 30.2 or RRS 30.3 may be broadcast on the designated VHF channel using bow/sail numbers. (This changes RRS 29.1, 30.2 and 30.3)
- 6.6 Failure of the RC to make any broadcast or to time it accurately will not be grounds for a request for redress. (This changes RRS 62.1(a))
- 6.7 The RC may broadcast any course changes over the designated VHF channel. Failure of a boat to hear such notification or failure to broadcast will not be grounds for redress. (This changes RRS 62.1(a))

7. SCHEDULE

Saturday, August 20, 2022

0945: Competitors Meeting at PYC on the Blue Porch.

1155: Warning Signal for First Race.

ASAP Following racing: Scoring will be announced at the bar in PYC. Awards for winners will be presented.

8. VENUE AND COURSES

- 8.1 The sailing area will be Pensacola Bay approximately south of the Bayou Chico Channel entrance.
- 8.2 The courses sailed will be harbor courses as described in Attachment A.

9 TIME LIMIT

- 9.1 The time limit for the first boat to sail the course and finish a race will be 2.5 hours after her start.
- 9.2 Boats failing to finish within 60 minutes after the first boat sails the course and finishes, and not thereafter retiring, being penalized, or given redress, will be scored TLE (Time Limit Expired, see Scoring). (This changes RRS 35, A5.1, A5.2 and A10)

10. PENALTY SYSTEM

- 10.1 The Scoring Penalty, Rule 44.3, will apply.

11. SCORING

- 11.1 The low-point scoring system of RRS Appendix A shall be used except there will be no discarded races. This changes RRS A2.
- 11.2 A boat scored TLE shall be scored points for her finishing place 2 more than the points scored by the last boat that finished according to NoR 9.2 but no more than equal to DSQ.

12. PRIZES

- 12.1 Award Presentations will be at Pensacola Yacht Club.

- 12.2 Trophies will be awarded as follows:

1st place and 2nd Place Spinnaker

1st place and 2nd Place Non-Spinnaker

Oldest couple (combined ages) sailing

Youngest couple (combined ages) Sailing

Couple with the least racing experience; having only raced one time.

Couple with the most racing experience; having won at least 5 races.

Couple married the longest of all married couples competing.

Couple finishing last.

13. FURTHER INFORMATION


PYC Fleet Captain: Hal Smith: hal_smith@mindspring.com


PRO: Mike Stewart: svbreeze@gmail.com


Race Committee Chair: Chase Munro: chase.munro@gmail.com





Attachment A HARBOUR RACE


 COURSE #3 (North Long)		
Marks	Rounded to	Distance
START	Signal Vessel	
A	Starboard	1.75
C	Starboard	1.91
H	Port	1.96
K	Port	2.10
I	Port	1.73
C	Port	2.33
FINISH	Signal Vessel	2.75
TOTAL DISTANCE		14.53

 COURSE #4 (North Short)		
Marks	Rounded to	Distance
START	Signal Vessel	
A	Starboard	1.75
D	Starboard	1.08
I	Port	1.50
J	Port	0.81
I	Starboard	0.81
D	Port	1.50
FINISH	Signal Vessel	2.25
TOTAL DISTANCE		9.70

 COURSE #5 (South Long)		
Marks	Rounded to	Distance
START	Signal Vessel	
K	Port	2.60
M	Starboard	3.88
P	Starboard	4.62
J	Port	1.90
FINISH	Signal Vessel	1.25
TOTAL DISTANCE		14.25


 COURSE #6 (South Short)		
Marks	Rounded to	Distance
START	Signal Vessel	
K	Port	2.60
N	Starboard	0.82
R	Starboard	2.44
J	Port	2.76
FINISH	Signal Vessel	1.25
TOTAL DISTANCE		9.87

 COURSE #7 (East Long)		
Marks	Rounded to	Distance
START	Signal Vessel	
L	Port	3.75
M	Starboard	0.83
N	Starboard	3.39
H	Starboard	2.29
D	Port	1.28
J	Port	2.30
FINISH	Signal Vessel	1.50
TOTAL DISTANCE		15.34

 COURSE #8 (East Short)		
Marks	Rounded to	Distance
START	Signal Vessel	
I	Starboard	0.75
C	Starboard	2.33
I	Port	2.33
K	Port	1.73
J	Starboard	0.93
FINISH	Signal Vessel	1.50
TOTAL DISTANCE		9.57



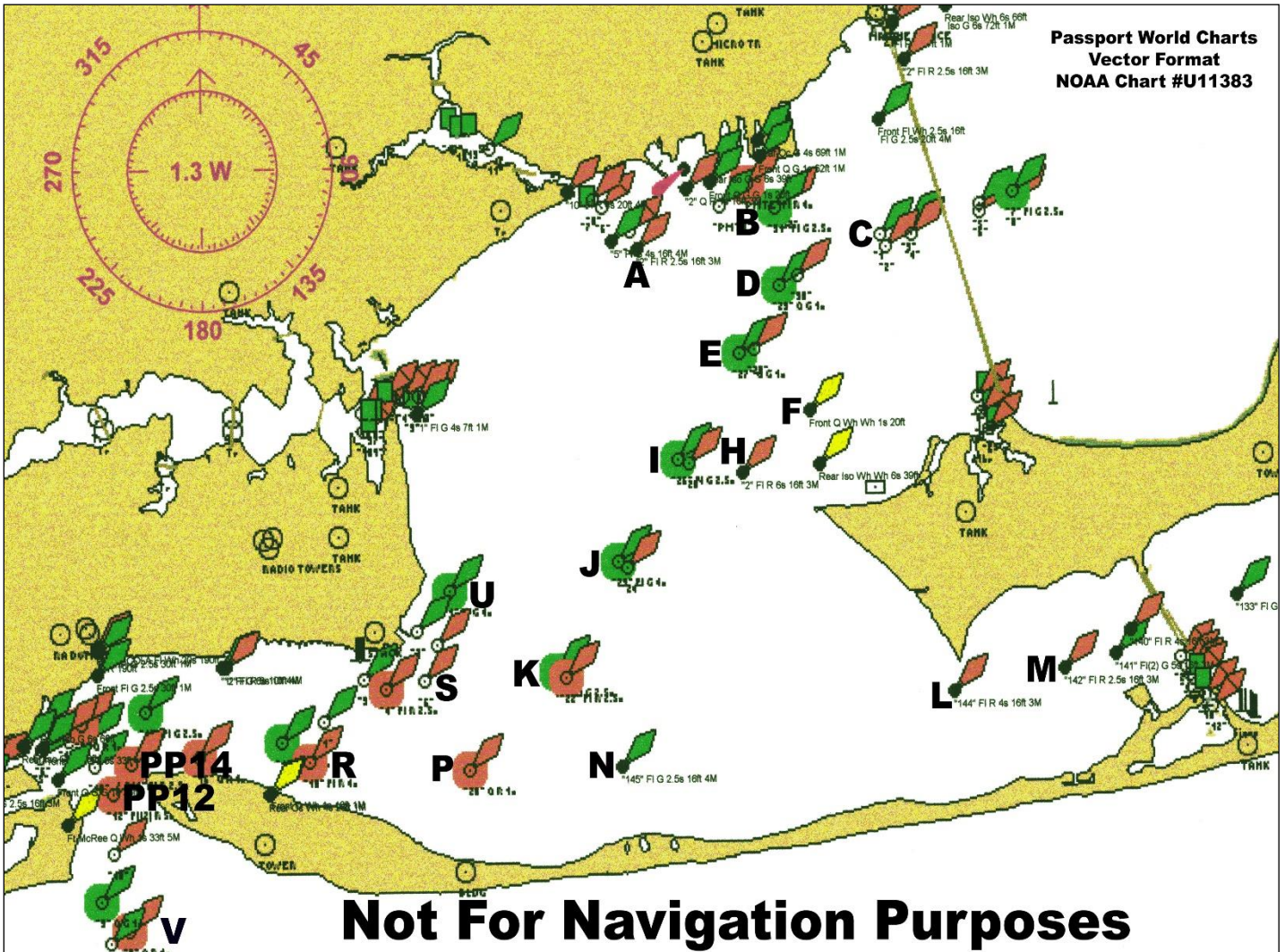
Attachment A HARBOUR RACE

 Marks	COURSE #1 (Sea Buoy)	
	Rounded to	Distance
START	Signal Vessel	Near entrance to Bayou Chico Channel
S (R6)	Starboard	3.5
PP 14 (R14)	Port	2.25
PP 12 (R12)	Port	0.26
X (G1, Entrance)	Port	3.47
PP 12 (R12)	Starboard	3.47
PP 14 (R14)	Starboard	0.26
S (R6)	Port	2.25
FINISH	Signal Vessel Near A	3.5
	TOTAL DISTANCE	19 nm



Attachment A HARBOUR RACE

Refer to NOAA Nautical Chart #11378 for details



Mark Letter	Used in Course	Chart Label	Description	Latitude (N)	Longitude (W)
A	3, 4	FI R 2.5s 17ft 3M "2"	Beginning of Bayou Chico Channel	30 ° 23.531 ' E	87 ° 13.729 ' W
B		G "31" FI G 2.5s	Close to Municipal Auditorium	30 ° 23.759 ' E	87 ° 12.574 ' W
C	3, 8	G C "1"	Three Mile Bridge Channel Marker	30 ° 23.557 ' E	87 ° 11.658 ' W
D	4, 7	G "29" Q G	Bay Channel "29"	30 ° 23.211 ' E	87 ° 12.551 ' W
E		G "27" Q G	Bay Channel "27"	30 ° 22.726 ' E	87 ° 12.878 ' W
F		Q 20ft	Forward Range Marker for East Channel	30 ° 22.383 ' E	87 ° 12.233 ' W
G		FI 2.5s 18 ft	Bay Channel Range Marker at NW end 3 Mile Bridge	30 ° 24.357 ' E	87 ° 11.351 ' W
H	3, 7	FI R 6s 17ft 3M "2"	Fair Point	30 ° 21.952 ' E	87 ° 12.819 ' W
I	3, 4, 8	G "25" FI G 2.5s	Bay Channel "25"	30 ° 21.989 ' E	87 ° 13.456 ' W
J	4, 5, 6, 7, 8	G "23" FI G 4s	Bay Channel "23"	30 ° 21.282 ' E	87 ° 13.979 ' W
K	3, 5, 6, 8	G "21" FI G 2.5s	Bay Channel "21"	30 ° 20.509 ' E	87 ° 14.537 ' W
L	7	FI R 4s 17 ft 3M "144"	Deer Point	30 ° 20.397 ' E	87 ° 10.947 ' W
M	5, 7	FI R 2.5s 17ft 3M "142"	Between Deer Point and Pensacola Beach Bridge	30 ° 20.549 ' E	87 ° 10.013 ' W
N	6, 7	FI G 2.5s 17ft 4M "145"	Pensacola Bay off Santa Rosa Island	30 ° 19.893 ' E	87 ° 13.891 ' W
P	5	R "20" FI R 4s BELL	Pensacola Bay off Santa Rosa Island	30 ° 19.821 ' E	87 ° 15.305 ' W
R	6	R "18" FI R 4s	Pensacola Bay off Santa Rosa Island	30 ° 19.888 ' E	87 ° 16.692 ' W
S		R N "6"	Turning Basin East of Naval Air Station Dock	30 ° 20.450 ' E	87 ° 15.719 ' W
U		FI G 4s "1"	Approx. 0.6 nm northeast of Naval Air Station Docks	30 ° 21.075 ' E	87 ° 15.460 ' W
V		R "8" Q R BELL	Caucus Channel (gulf entry channel) Buoy 8	30 ° 18.715 ' E	87 ° 18.300 ' W
X		G "1" FI G 2.5 s GONG	Pensacola Pass Sea Buoy	30 ° 16.262 ' E	87 ° 17.546 ' W
PP12		R "12" FI (2) R 5s	Pensacola Pass "12"	30 ° 19.685 ' E	87 ° 18.417 ' W
PP14		R "14" FI R 2.5s	Pensacola Pass "14"	30 ° 19.891 ' E	87 ° 18.280 ' W

The above positions are approximate. While every care has been taken in the preparation of the above list, no Request for Redress and/or liability can be accepted for any loss or damage arising from any error or inaccuracy. Lat/Long data source NOAA ENC#11383, 07AUG03 update. These marks and characteristics contained herein were current 2/06/03. "The Notice to Mariners" should be referred to as any of these marks could be subject to change in approximate position and characteristics. The individual Race Committees shall endeavor to note and post any changes that may affect this table. **Ultimately, it is the responsibility of the competitors to navigate the given course properly.**