



San Diego – Ensenada 58th International Yacht Race

“The Little Ensenada”

San Diego, CA
Friday, September 30, 2022
Southwestern Yacht Club



Sailing Instructions

1 RULES

- 1.1 Add new rule 41(e): (e) help to recover from the water and return on board a crew member, provided the return on board is at the approximate location of the recovery.
- 1.2 If the Race Committee boat is damaged because of a boat breaking a rule, that boat shall pay for the repairs.

2 CHANGES TO THE SAILING INSTRUCTIONS

- 2.1 Any change to the sailing instructions will be posted before 0900 on the day it will take effect, except that any change to the schedule of racing will be posted by 2000 on the day before it will take effect.
- 2.2 In accordance with RRS 90.2 (c), oral changes to the Sailing Instructions may be made on the water. Any change in the sailing instructions made afloat will be communicated via VHF Channel 68.

3 COMMUNICATIONS WITH COMPETITORS

- 3.1 Official notices will be available online through the [EVENT NOTICE](#) BOARD on this event's page through the [SWYC](#) website.
- 3.2 On the water, the RC will monitor and communicate with competitors on VHF radio channel 68.
- 3.3 SWYC Race Headquarters in Ensenada will be established at the Hotel Coral. The WiFi account at the Hotel Coral is *Coral Guest* and the password is **coralmarina**. Contact the SWYC RC Chair, *Keith Robertson*, via email: keith@johnsonandjennings.com, or cell: (619)955-3626.
Contact the SWYC RC Scorer on “WhatsApp” through *Shelly Raming*.
- 3.4 The Mexican Navy will monitor channels 16 and 71.
- 3.5 **In the event of an on-the-water emergency, contact the US Coast Guard or the Mexican Navy on VHF Channel 16 directly and immediately.**

4 CODE OF CONDUCT

- 4.1 [DP] Competitors and support persons shall comply with reasonable requests from race officials.

5 SCHEDULE OF RACING

- 5.1 The first warning is scheduled for 1050 September 30, 2022.

6 CLASS FLAGS, START ORDER & CHECK IN

- 6.1 Class Assignments, Class Flags and Starting Order will be established and posted on the regatta website no later than 1200 Thursday, September 29, 2022, and shall be considered an amendment to the sailing instructions.
- 6.2 Numeral pennants designating class will be displayed from the yacht's backstay. Yachts without a backstay shall display their pennants in a prominent manner on the stern.
- 6.3 [DP] All yachts shall check in with the RC boat at least one minute prior to the warning signal for their class. Check-In will commence when the "L" flag is hoisted.
- 6.4 No check-in will occur after one minute before or during a starting sequence for any class. Yachts checking in shall pass the RC boat to starboard and hail with sail number, class, and the *number of souls on board*. Check-in will be complete only when the RC responds with that information. ***THERE WILL BE NO RADIO CHECK-IN.***

7 RACING AREA

- 7.1 The racing area will be the Pacific Ocean from the Coronado Roads to Ensenada, Mexico.

8 THE COURSE

- 8.1 The starting area will be in the Coronado Roads, in the vicinity of TG-1 federal mooring buoy.
- 8.2 The race will proceed from the starting line to Mark 1 (weather mark), approximately 1 nm upwind from the start, leaving Mark 1 to port, then to the finish line.
- 8.3 The finish is west of the Hotel Coral Marina breakwater, approximately at position 31° 51.746' N / 116° 41.492' W.
- 8.4 The distance is approximately 58 nautical miles.

9 MARKS

- 9.1 Mark 1 is a yellow tetrahedron located approximately 1nm upwind of the start line.

10 THE START

- 10.1 The starting line will be between a staff displaying an orange flag on the RC boat and a yellow inflatable buoy near the RC boat.
- 10.2 A distance buoy may be streamed aft of the RC boat and if present shall be considered part of the RC boat.
- 10.3 [DP] Boats whose Class Warning Signals have not been made shall keep clear of the starting area and vessels attempting to start.
- 10.4 The RC may eliminate or combine starts without prior notice, depending on entries. Class pennants will indicate combined starts. The RC may announce any

such changes on VHF Channel 68. Failure to announce will not be grounds for a request for redress.

- 10.5 All classes will be started in accordance with RRS 26. To signal a class start, one minute prior to the warning the RC will sound 4 long horn blasts as a courtesy. It is the intention of the RC that classes start **5 to 10 minutes apart**, or more, dependent upon the prevailing conditions.

11 RECALLS

- 11.1 If any part of a boat's hull is on the course side of the starting line at her starting signal and she is identified, the RC will hail her sail number as soon as possible over a loud hailer and/or on VHF 68. It is the responsibility of each boat to start properly.
- 11.2 Failure to hail her number, failure of her to hear such a hail, or the order in which boats are hailed will not be grounds for a boat's redress for request. This changes RRS 62.1(a).
- 11.3 Premature starters failing to return and start properly will be penalized by having thirty (30) minutes added to their corrected times, as defined in NoR 1.8.

12 THE FINISH

- 12.1 The finish line is located off the Hotel Coral Marina breakwater, approximately at position 31° 51.746' N / 116° 41.492' W. See Attachment A for finish line approximate location.
- 12.2 Finish will be between two yellow tetrahedrons. A proper finish leaves the nearshore tetrahedron to port. An effort will be made to light the finish marks during hours of darkness. Failure of RC to light finish marks will not be grounds for redress.
- 12.3 Each boat, when an estimated 30 minutes from finishing, shall contact race committee on VHF Channel 68, providing approximate distance from finish line, and receive RC acknowledgement. The boat will continue to monitor VHF Channel 68 until she crosses the finish. Upon crossing the finish, the boat will hail RC on VHF Channel 68, provide their GPS finish time, and receive RC acknowledgement. Each boat shall take her own GPS time when that boat crosses the finish and keep photographic evidence of position and time at finishes or screen shots of GPS apps (see also SailFreeGPS) in case that evidence is needed. Take note of the boats finishing immediately before and after your boat.
- 12.4 In the case of radio communication failure, finish times shall be reported to the SWYC RC Scorer, *Shelly Raming*, at shelly.raming@gmail.com or on **WhatsApp**, or reported in person to Race Headquarters at the Hotel Coral. Deadline for reporting finish time is 1300 on Saturday, October 1, 2022.
- 12.5 Cruising Classes: Engines shall be off at least 500 yards (0.25 nautical miles) before the finish line.

13 PENALTY SYSTEM

- 13.1 RRS 44.1 is in effect with NO modifications.

14 TIME LIMIT & WITHDRAWALS

- 14.1 Any boat failing to finish by 1300 on October 1, 2022, and not subsequently retiring, penalized, or given redress, will be scored Time Limit Expired (TLE) without a hearing. A boat scored TLE shall be scored points for the finishing place one more than the points scored by the last boat that finished within the time limit. This changes RRS 35, A5.1, A5.2 and A10.
- 14.2 Boats that start and then drop out (DNF), or exceed the time limit (TLE), shall report either to the Race Headquarters at the Hotel Coral in person or email the SWYC RC Scorer, *Shelly Raming*, at shelly.raming@gmail.com or contact her on **WhatsApp**.
- 14.3 Failure to notify SWYC RC may result in loss of racing privileges in future SWYC events and may cause a search party to be sent out to look for you.
THIS IS A SAFETY ISSUE. ESPECIALLY SINCE THIS IS AN OCEAN RACE, PLEASE COMPLY!!!
- 14.4 Boats that DNF will be considered by U.S. Customs and Border Patrol (CBP) to have landed in foreign waters, and therefore, must clear U.S. CBP upon return to U.S. soil.

15 CRUISING CLASSES ENGINE TIME LOG

- 15.1 Total engine propulsion time may not exceed four (4) hours for the entire race.
- 15.2 Engine in-gear time is restricted to between 1800 hours and 0600 hours during the race.
- 15.3 The Engine Time Log must be completed for each Cruising Class participant, even if the engine is not used. See Attachment B.
- 15.4 File your Engine Time Log with Race Headquarters at the *Hotel Coral* as soon as practical after finishing, but no later than the filing deadline of 1300 hours on Saturday, October 1, 2022. A drop box will be provided at the front counter of the hotel or with the RC representative at the table at Race Headquarters.
- 15.5 Boats finishing between 1200 and 1300 hours may radio in the Engine Time Log to the Race Committee for provisional scoring. In this case, the Engine Time Log must be filed with Race Headquarters as soon as practical after finishing.
- 15.6 [DP] The RC may score a yacht as DNF for incomplete and/or late submission of the Engine Time Log. This changes RRS A5.

16 HEARING REQUESTS

- 16.1 Protests must be in writing and hand delivered to a RC representative at the Race Headquarters no later than 1300 hours on Saturday, October 1, 2022.
- 16.2 Protests will be heard in the approximate order of receipt, commencing at 1200 hours, at the Hotel Coral, on Saturday, October 1, 2022.

17 SCORING

- 17.1 All scoring will be based on Time-on-Time.
- 17.2 PHRF scoring will utilize the PHRF-SD OWC rating, or Chief Handicapper ratings provided for this race.

- 17.3 Dual-scoring for boats with ORR certificates will be provided. The ORR Offshore Offwind rating will be utilized. Perpetual trophies are PHRF-based.

18 SAFETY

- 18.1 Non-emergency vessel assistance in Mexican waters is practically non-existent until entering Todos Santos Bay. At that time, commercial assistance may be obtained by calling *Baja Naval* or *Juanitos* on **VHF Channel 16**.
- 18.2 A boat that retires from a race, exceeds the time limit, or chooses not to compete after checking in, must comply with SI 14.2. Failure to do this may result in rejection of entry from future races.

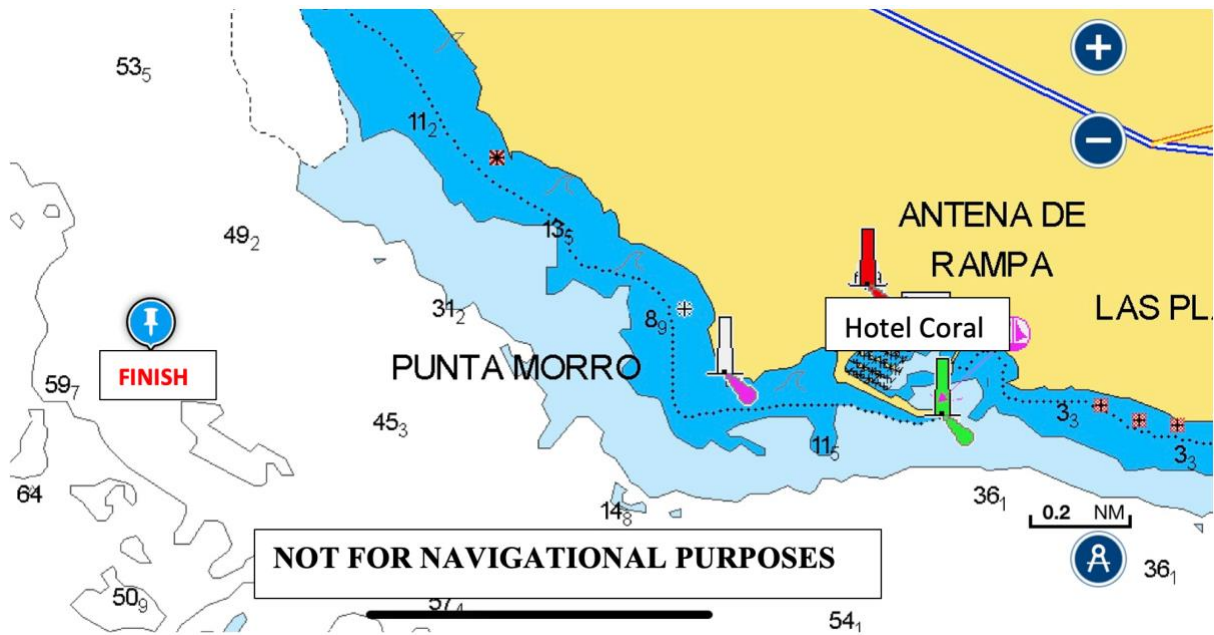
THIS IS A SAFETY ISSUE. ESPECIALLY SINCE THIS IS AN OCEAN RACE, PLEASE COMPLY!!!

- 18.3 Notwithstanding any safety requirements, the ultimate safety of a boat and her crew is the sole and inescapable responsibility of the owner or charterer. He/she must do his/her best to ensure that the boat is fully sound, thoroughly seaworthy and manned by an experienced crew who are physically fit to face bad weather. He/she must be satisfied as to the soundness of hull, spars, rigging, sails and all gear. He/she must ensure that all safety equipment is properly maintained and stowed, and that crewmembers know where it is stowed and how it is used.

19 DISCLAIMER OF LIABILITY

Sailing is an activity that has an inherent risk of damage and injury. Competitors in this event participate entirely at their own risk. See RRS 3, *Decision to Race*. The race organizers (SWYC, race committee, protest committee, host club, sponsors, or any other organization or official) will not be responsible for damage to any boat or other property or the injury to any competitor, including death, sustained as a result of participation in this event. As a condition of their participation in this regatta, competitors release all claims they may have against SWYC and its officers, directors, members, committees and employees for damage to property, personal injury or death sustained in conjunction with or prior to, during or after the regatta. Competitors shall be responsible for damage or injury caused by their breach of The Racing Rules of Sailing or applicable governmental rules for the avoidance of collision.

Attachment A



Attachment B

2022 San Diego to Ensenada International Yacht Race Cruising Class Engine Time Log

Yacht Name: _____

Sail Number: _____

1. LIMITATIONS

- 1.1. Total engine propulsion time may not exceed four (4) hours for the entire race.
- 1.2. Engine in-gear time is restricted to between 1800 hours and 0600 hours during the race.
- 1.3. The engine must be turned off at least 500 yards (0.25 nautical miles) before the finish line.
- 1.4. A yacht may not exceed its hull speed using engine propulsion.

2. RECORDING

- 2.1. **Record the total time in MINUTES** that your engine is running and in gear.
- 2.2. Record a minimum of 30 minutes for each time the engine is placed in gear.
- 2.3. Complete the form even if you did NOT use any engine propulsion time.

3. FILING

- 3.1. **File your Engine Time Log with Race Headquarters at the Hotel Coral as soon as practical after finishing, but no later than the filing deadline of 1300 hours on Saturday, October 1, 2022.** A drop box will be provided at the front of the hotel if the Race Sales Table is not open.
- 3.2. Boats finishing between 1200 and 1400 hours may radio in the Engine Time Log to the Race Committee for provisional scoring.
- 3.3. All Cruising Class participants are required to file an Engine Time Log.
- 3.4. The Race Committee will enter Did Not Finish (DNF) for incomplete and/or late submission of the Engine Time Log.

Time (hour)	1800	1900	2000	2100	2200	2300	0000	0100	0200	0300	0400	0500	Total
Min.													

Race Total: _____

Printed Name of Skipper: _____

Signature: _____

