



60th ANNUAL - OPEN ORANGE BOWL REGATTA

Coconut Grove Sailing Club - Miami, FL December 27-30, 2022

SAILING INSTRUCTIONS

1. RULES

- 1.1 The 2022 CGSC Open Orange Bowl Regatta will be governed by the “The Rules” as defined in the current Racing Rules of Sailing (RRS).
- 1.2 Only the following prescriptions of US Sailing will apply: RRS 61.4, Appendix R, Appendix V1, and prescriptions to RRS 60.3, 67, 70.5(a), and 76.1. They will be posted on the official on-line notice board.
- 1.3 RRS 40.1 (Personal Flotation Devices) applies at all times while afloat.
- 1.4 In the event of conflict between the Notice of Race (NoR) and these Sailing Instructions (SIs), these SIs and any amendments to these SIs will prevail. *This changes RRS 63.7.* If there is a conflict between a class rule and these SIs, the SIs will take precedence to the extent allowed by the class rules.
- 1.5 The special procedures of Appendix P5 will apply. In particular, the attention of participating 29ers and I-420s is drawn to 29er CR C1.1 (b) and I-420 CR C.1.1.1 which modify RRS 42 under certain conditions. In this regard, the RC will display Race Signals as provided in RRS P5.
- 1.6 All boats shall check in with the RC Signal Vessel prior to the Warning Signal of the first race each day by sailing past the stern of the Signal Vessel on starboard tack and hailing her sail number until acknowledged by the Race Committee. Failure to comply with this instruction will result in a 20% penalty (calculated in accordance with RRS 44.3(c)) in the first race that day without a hearing. *This changes RRS 63.1 and A5.1.*

2. COMMUNICATION WITH COMPETITORS

- 2.1 Notices to competitors will be posted on the Official Notice Board (ONB) at Regatta Network and by email to all competing boats affected by this notice. The URL for the ONB is https://www.regattanetwork.com/event/25261#_newsroom. Failure of a boat to receive or read any such emails and notices will not be grounds for redress. *This changes RRS 62.1(a).*
- 2.2 On Tuesday, December 27th, at 0900, there will be a briefing for competitors and coaches at Regatta Park.
- 2.3 Race Results will be on Regatta Network, at https://www.regattanetwork.com/event/25261#_newsroom

3. CHANGES TO SAILING INSTRUCTIONS

- 3.1 Written changes will be posted by 1000 on Tuesday, December 27th, and thereafter by 0830 on the day they will take effect. However, any changes in the Schedule of Races will be posted by 1000 on Tuesday, December 27, or by 1900 or the protest time limit (whichever is later) on the day before they take effect.
- 3.2 Changes to the Sailing Instructions may be made on the water in accordance with RRS 90.2(c). The RC Signal Vessel shall display Code Flag "L" (with one sound) and Competitors shall approach the Signal Vessel and orally receive the change or read the change on a board posted on the Signal Vessel.

4. SIGNALS MADE ASHORE

- 4.1 Signals made ashore will be displayed from the CGSC flagpole and posted to the ONB.
- 4.2 When Code Flag "L" is displayed ashore, a notice to competitors has been posted on the Official Notice Board, and notification will be sent to competing boats by email.
- 4.3 When Code Flag "AP" is displayed ashore, "1 minute" is replaced with "not less than 60 minutes" in the race signal AP. *This changes RRS Race Signals AP.*

5. SCHEDULE

- 5.1 The schedule for the regatta will be as follows:

Monday, Dec. 26	
Equipment Arrival & Staging	0830 - Dark
Competitor and coach registration and check-in at CGSC	1500 - 1700
Tuesday, Dec. 27	
Competitor and coach registration and check-in at CGSC	0800 - 0900
Competitor's meeting at Regatta Park	0900
1st warning signal: I-420s. 29ers and Flying Scots to follow	1100
Wednesday, Dec.28	
1st warning signal: I-420s. 29ers, Nacras 15s, and Flying Scots to follow	1100
Thursday, Dec. 29	
Finn and Waszp registration and check-in at CGSC	0800 - 0900
1st warning signal: I-420s. 29ers, Nacra 15s, and Finns to follow	1100
First warning signal:Waszps	1130
Friday, Dec. 30	
First warning signal: I-420ss. 29ers, Nacra 15s, and Finns to follow	1100
First warning signal:Waszps	1130
No warning after this time	1330
Awards Ceremony	ASAP After Racing

- 5.2 Eleven (11) races are scheduled for the I-420 and 29er classes.
- 5.3 Ten (10) races are scheduled for the Waszp class.
- 5.4 Eight (8) races are scheduled for the Nacra 15 classes.
- 5.5 Five (5) races are scheduled for the Flying Scot and Finn classes.
- 5.6 The Race Committee Finishing Vessel will display Code Flag "A" without a sound signal, while boats are finishing indicating there will be no more racing that day. If Code Flag "A" is not displayed, boats should return to the starting area in anticipation of another race.
- 5.7 On the final day of the regatta, no warning signal will be made later than 1330 hours.

6. CLASS FLAGS

- 6.1 The class flags are as follows:
 - I-420 - Blue i420 logo on red and blue field
 - 29er - Red 29er logo on a green field
 - Nacra 15 - White Nacra 15 logo on a purple field
 - Flying Scot - White Flying Scot logo on a red field
 - Finn - Blue Finn logo on a white field
- 6.2 The Waszp class flag will be announced at the competitors meeting and posted on the ONB.

7. RACING AREA

- 7.1 All racing will be on Biscayne Bay in an area approximately 2.1 miles on a bearing of 170° from the John A. Brennan Channel Marker "1" (Fl.G 5sec 8ft). See Addendum No. 2 - Race Areas.
- 7.2 The I420s, 29ers, Nacras Flying Scots, and Finns will race on the circle identified as "CGSC - Open Orange Bowl" on Addendum No. 2.
- 7.3 The Waszps will race on the circle identified as "Waszp" on Addendum No. 2.

8. COURSES

- 8.1 The diagrams in Addendum No. 1 show the courses, including the approximate angles between legs, the order in which marks are to be passed, and the side on which each mark is to be left.
- 8.2 No later than the warning signal, the race committee signal vessel will display the approximate compass bearing and length of the first leg.
- 8.3 **A shorter distance Mark 1 will be set for the Flying Scot and Finn classes only (see SI 9.2).**

9. MARKS

- 9.1 Marks 1, 2, 3P/3S (the outer gate), and 4P/4S (the inner gate) will be orange inflatable marks.
- 9.2 The shorter distance Mark 1 will be a yellow inflatable mark (see SI 8.3).
- 9.3 Mark 1A (the offset mark) will be a 3 ft. (0.9m) mini-cylinder mark.
- 9.4 If one gate mark is missing, the remaining gate mark shall be left to port.
- 9.5 Starting and Finishing Marks are as provided in SI 10.1 and 12.1, respectively.

10. THE START

- 10.1 The starting line will be between a staff displaying an orange flag on the RC Signal Vessel and a staff displaying an orange flag on a port end Line Vessel or the course side of a yellow inflatable mark.
- 10.2 A boat starting later than four (4) minutes after her starting signal will be scored Did Not Start (DNS) without a hearing. (*This changes RRS A5.1 and A5.2*).

11. CHANGE OF THE NEXT LEG OF THE COURSE

- 11.1 To change the next leg of the course, the Race Committee will move the original mark (or the finishing line) to a new position.
- 11.2 If Mark 1 is moved during a race, Mark 1A (the offset) will not be used for the remainder of that race.

12. THE FINISH

- 12.1 The finish line will be between a staff displaying a blue flag on the RC Finish or Signal Vessel and a staff displaying a blue flag on a nearby RC Mark Vessel, or the course side of a yellow inflatable mark.

13. TIME LIMITS

13.1 The time limit and target time for each class (in minutes) are as follows:

Class:	First Mark	Race	Target Time
I-420	30	90	45
29er	15	60	28
Nacra 15	15	60	28
Finn	20	80	40
Flying Scot	20	80	40
Waszp	To be announced	To be announced	To be announced

13.2 If no boat has passed the first mark within the Mark 1 Time Limit, the race shall be abandoned.

13.3 Boats failing to finish within the 15 minutes of the first boat in her class and not subsequently retiring, penalized or given redress, will be scored Did Not Finish without a hearing. *This changes RRS 35, A5.1 & A5.2.*

13.4 Failure to meet the target time will not be grounds for redress. *This changes RRS 62.1(a).*

14. ALTERNATIVE PENALTIES

14.1 A boat that has taken penalty turns is encouraged to notify the Protest Committee by completing the online Penalty Acknowledgement form [here](#).

14.2 For the 29er and Nacra 15 classes, RRS 44.1 and Appendix V1 are changed so that the Two-Turns Penalty is replaced by the One-Turn penalty.

14.3 After a race, a boat that may have broken one or more rules of Part 2 or RRS 31 in an incident while racing may request to take a Post-Race Penalty for that incident. A boat takes the penalty by completing the online Penalty Acknowledgement form [here](#). The penalty shall be a 25% Scoring Penalty, calculated in accordance with RRS 44.3(c). However, RRS 44.1(a) and (b) apply, and the penalty shall not be taken after a protest hearing involving the incident has begun.

15. PROTEST AND REDRESS REQUESTS — THIS NEEDS WORK

15.1 Scoring inquiries, **including potential redress requests relating to a starting penalty**, should be initiated by filling out the online Scoring Inquiry form [here](#). Alternatively, a completed Scoring Inquiry form may be photographed and emailed to ScoringInquiry@cgsc.org. Also, questions about the status of scoring inquiries can be emailed to ScoringInquiry@cgsc.org. The RC will investigate, get back to you, and attempt to resolve the issue. If the scoring inquiry turns into a redress request, then the redress time limit will have been satisfied if the Scoring Inquiry form was submitted before the redress time limit expired and the request is made within 30 minutes after the inquiry has been answered.

15.2 Protests **and requests for redress unrelated to a starting penalty** should be initiated by filling out the online Protest form [here](#). Additionally, if a diagram is required, it should be photographed and emailed to Protest@cgsc.org. Alternatively, a completed Protest form may be photographed and emailed to Protest@cgsc.org. Also, questions about the status of protests and redress requests can be emailed to Protest@cgsc.org. Protests and requests for redress shall be emailed within the protest time limit, which is one (1) hour after the RC Signal Vessel docks and which will be posted on the regatta website notice board.. Parties to hearings, and their witnesses, should report to the protest desk by the time scheduled. The protest desk is at Coral Reef Yacht Club, on the second floor of the boat house (white building) at the bayside end.

15.3 It is a boat's sole responsibility to check the ONB at [Regatta Network](#) or its email promptly after the end of the protest filing time to see if she is cited in a protest.

15.4 The Race Committee will post to the ONB a list of penalties being assigned by the race committee and protests reported to the race committee prior to the end of the protest time limit. The deadline for requesting redress based on these scores will be either 30 minutes

after posting of the penalty notice or the protest time limit, whichever is later. *This changes RRS 62.2.*

- 15.5 In a protest decision, the protest committee may impose suitable penalties, other than disqualifications, for violations of non-Part 2 rules, RRS 31 or for rules with no penalty specified in accordance with RRS 64.2.

16. SCORING

- 16.1 A minimum of three (3) races must be completed to constitute a Regatta for the I-420 29er, and Nacra 15 fleets. A minimum of one (1) race must be completed to constitute a regatta for the Flying Scot, and Finn fleets.
- 16.2 In accordance with RRS A2.1, a boat's series score shall be the total of her race scores excluding her worst score after six (6) races have been completed.

17. PRIZES

- 17.1 Trophies will be awarded to the top five finishers in any fleet with 15 or more entries, to the top three boats in any class with 10 to 14 entries, to the top two boats in any class with 5 to 9 entries, and to the top boat in other classes. In addition, for the I-420, 29er and Nacra 15 classes, the top junior team (skipper and crew not yet age 17 on December 31, 2022) will receive prizes.

18. SAFETY REQUIREMENTS

- 18.1 A boat that retires from a race or does not intend to start a scheduled race shall promptly report this to the Race Committee via hailing and receive acknowledgement. If this is not possible, once back to shore, the skipper shall email RaceCommittee@cgsc.org.
- 18.2 Coach and support vessels are required by the Race Committee to monitor Race Committee VHF channel **73** for the I420, 29ers and Nacra 15s, Flying Scots, Finns, and Race Committee VHF channel **69** for the Waszps. In addition, they shall provide assistance to any competitor in danger, if notified to do so by the Race Committee.

19. COACH VESSEL & SUPPORT VESSEL (PARENT & SPECTATOR)

- 19.1 Coach Vessels shall register with CGSC during Registration, receive a flag, and sign a credit card authorization. Upon request, a mooring ball will be assigned for overnight use. The vessel will be charged \$80 USD if the flag is not returned at the end of the regatta. No coach vessel will be allowed on the course without a flag.
- 19.2 Except when rendering aid, team leaders, coaches and other support persons shall stay 100 meters away from all competitors and outside the trapezoid from the time of the preparatory signal for the first class to start until all boats have finished or retired or the race committee signals a postponement, general recall or abandonment.
- 19.3 Launching of coach vessels not already in the water will be permitted at the Coconut Grove Sailing Club facilities or as directed by host staff. There is no dockage available for non-CGSC coach or support vessels. Non-CGSC coach vessels shall not dock at any time, except they may touch and go on the north and south dock (if the coach remains with the boat). Other non-CGSC support vessels shall not dock at any time. If a non-CGSC coach or support vessel is left unattended on any dock, then this violation of the rules may result in penalties up to and including expulsion of the vessel from the regatta.
- 19.4 A hearing may be called if a coach or support vessel fails to comply with the requirements of SI 20. The penalty for failing to comply with these requirements or the oral instructions of the Race Committee or Protest Committee will be at the discretion of the Protest Committee. **The penalty may be imposed on any or all boats associated with the support or coach vessel.**

20. RADIO COMMUNICATION

- 20.1 While racing, a boat shall neither make radio transmissions nor receive radio communication not available to all boats. This restriction also applies to mobile phones, cell phone calls and text messages.

21. VENUE AND TRASH DISPOSAL

- 21.1 All 420s, 29er and Nacra 15s and out of town Finns will be launched, hauled and stored at Regatta Park.
- 21.2 Boats from Biscayne Bay Clubs other than CGSC may launch from and return to their own clubs. However, sailors of those boats must notify CGSC by no later than 1700 on December 26, 2022 whether they will launch, haul and store at Regatta Park.
- 21.3 Each boat on the Regatta Park premises shall have a marked dolly with name.
- 21.4 Flying Scots will be kept at CGSC in the Strip trailer storage area and, if necessary, in the adjacent section of the parking lot.
- 21.5 Vehicle parking inside the CGSC entrance gate is reserved for Members ONLY. Offsite (paid) parking is available nearby on the circle just outside the CGSC Main Gate, in the underground public parking garage a half block up McFarlane, or elsewhere nearby.
- 21.6 There are three docks at CGSC, two floating and one fixed. A public boat ramp facility is located north of and adjacent to CGSC. For the CGSC Open Orange Bowl Regatta, CGSC's launching facilities will be configured so as to provide one hoist and two launch ramps.
- 21.7 All trailer unloading, loading and staging at Regatta Park and/or CGSC will be done as instructed by the organizers or host staff. Trailers will be parked off site at the designated Orange Bowl trailer parking area at Dinner Key Marina/Regatta Park.
- 21.8 All skippers and crews must properly dispose of trash while ashore at CGSC or afloat. Trash left on the ground will not be tolerated.
- 21.9 Refuse may be given to any RC vessel between races.

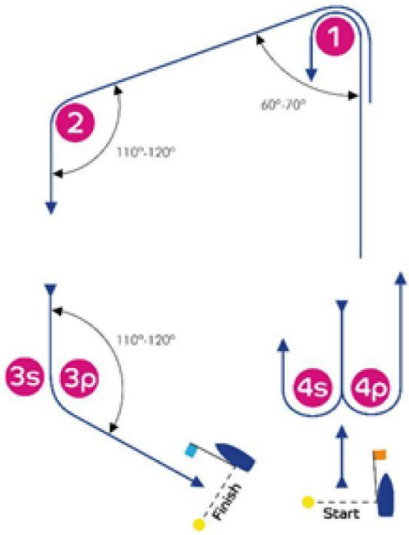
22. RISK STATEMENT

- 22.1 RRS 3 states: 'The responsibility for a boat's decision to participate in a race or to continue to race is hers alone.' By participating in this event each competitor agrees and acknowledges that sailing is a potentially dangerous activity with inherent risks. These risks include strong winds and rough seas, sudden changes in weather, failure of equipment, boat handling errors, poor seamanship by other boats, loss of balance on an unstable platform and fatigue resulting in increased risk of injury. **Inherent in the sport of sailing is the risk of permanent, catastrophic injury or death by drowning, trauma, hypothermia or other causes.**

CGSC MANAGER Lauren Simpson, laurensimpson@cgsc.org
DOCKMASTER Eric Lindeman, dockmaster@cgsc.org
RACE COMMITTEE CHAIR Susan Walcutt, walcutts@bellsouth.net
REGATTA CHAIR Andi Hoffman, CGSCrace@gmail.com
PRO Matt Bounds, mbounds@comcast.net
CHIEF JUDGE Rick Mallinson

ADDENDUM No. 1 COURSE ILLUSTRATIONS

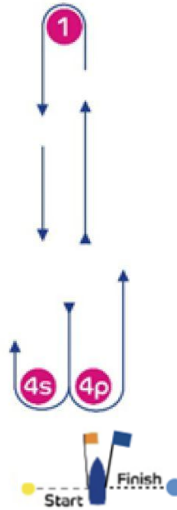
I



Course: Inner Trapezoid

Signal	Mark Rounding Order
I2	Start - 1 - 4s/4p - 1 - 2 - 3p - Finish
I3	Start - 1 - 4s/4p - 1 - 4s/4p - 1 - 2 - 3p - Finish
I4	Start - 1 - 4s/4p - 1 - 4s/4p - 1 - 4s/4p - 1 - 2 - 3p - Finish

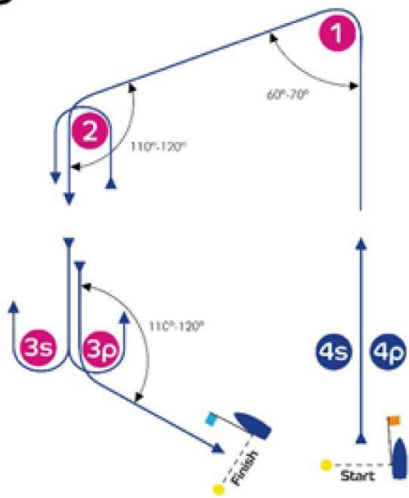
L



Course: Windward/Leeward

Signal	Mark Rounding Order
L2	Start - 1 - 4s/4p - 1 - Finish
L3	Start - 1 - 4s/4p - 1 - 4s/4p - 1 - Finish
L4	Start - 1 - 4s/4p - 1 - 4s/4p - 1 - 4s/4p - 1 - Finish

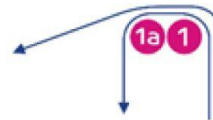
O



Course: Outer Trapezoid

Signal	Mark Rounding Order
O2	Start - 1 - 2 - 3s/3p - 2 - 3p - Finish
O3	Start - 1 - 2 - 3s/3p - 2 - 3s/3p - 2 - 3p - Finish
O4	Start - 1 - 2 - 3s/3p - 2 - 3s/3p - 2 - 3s/3p - 2 - 3p - Finish

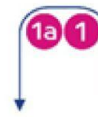
IA



Course: Same as Course I except with Offset Mark 1A

Signal	Mark Rounding Order
IA2	Start - 1 - 1a - 4s/4p - 1 - 1a - 2 - 3p - Finish
IA3	Start - 1 - 1a - 4s/4p - 1 - 1a - 4s/4p - 1 - 1a - 2 - 3p - Finish
IA4	Start - 1 - 1a - 4s/4p - 1 - 1a - 4s/4p - 1 - 1a - 4s/4p - 1 - 1a - 2 - 3p - Finish

LA



Course: Same as Course L except with Offset Mark 1A

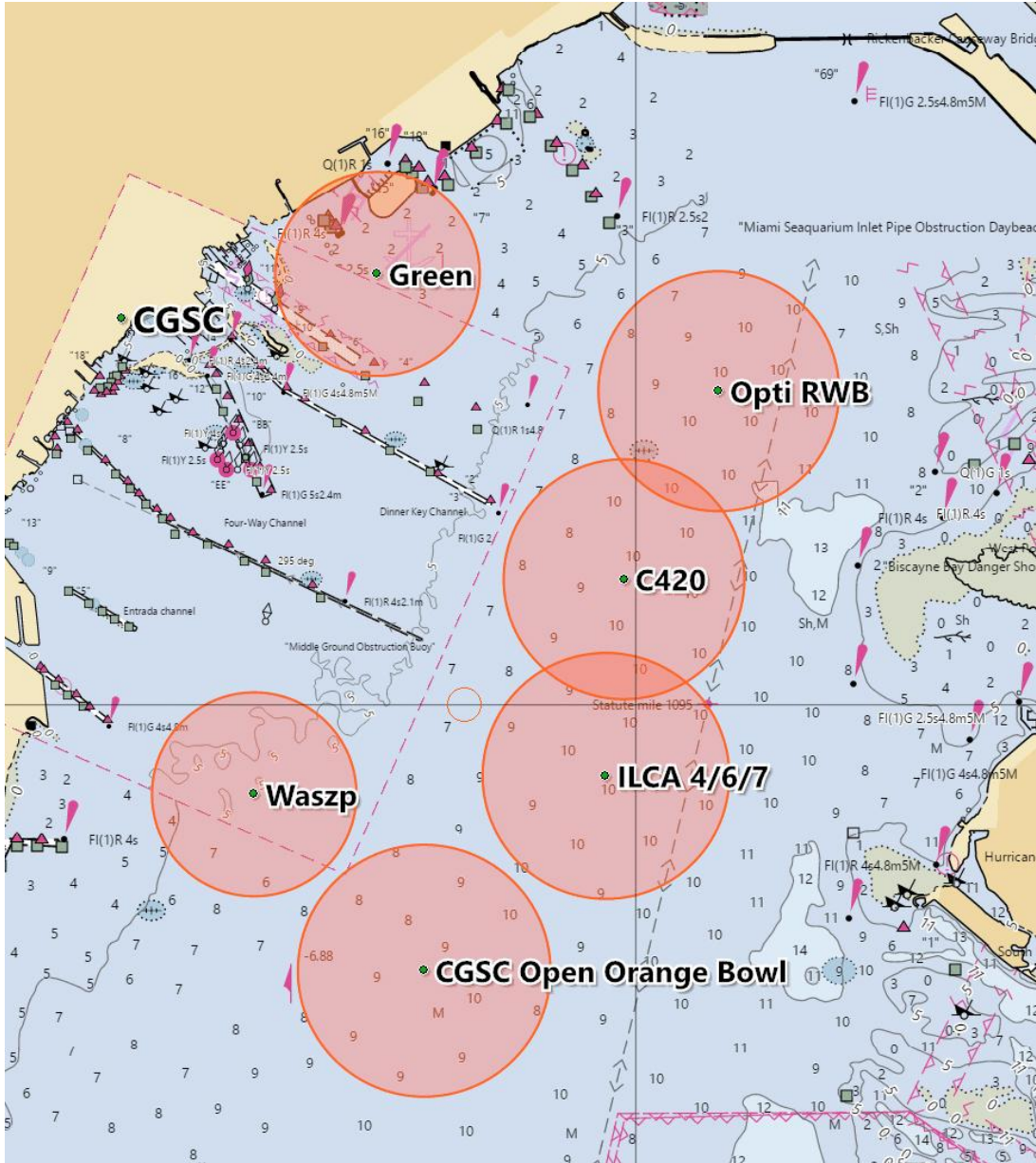
Signal	Mark Rounding Order
LA2	Start - 1 - 1a - 4s/4p - 1 - 1a - Finish
LA3	Start - 1 - 1a - 4s/4p - 1 - 1a - 4s/4p - 1 - 1a - Finish
LA4	Start - 1 - 1a - 4s/4p - 1 - 1a - 4s/4p - 1 - 1a - 4s/4p - 1 - 1a - 4s/4p - 1 - 1a - Finish

If a gate mark is missing, the remaining mark shall be left to port
 Note that on courses L and LA, marks 4S and 4P are not marks of the course on the final leg.
A shorter distance Mark 1 will be set for the Flying Scot and Finn classes only.

ADDENDUM No. 2

RACE AREAS

(Including Orange Bowl Regatta Race Circles)



Circle	VHF	Diameter (nm)	Center - Lat/Long - Degrees, decimal minutes
Opti RWB	71	1.00	N25°43.311 W080°11.619
ILCA 4/6/7	74	1.25	N25°41.703 W080°12.138
C420	77	1.00	N25°42.525 W080°12.055
Opti Green	78	0.85	N25°43.801 W080°13.189
Waszp	69	0.85	N25°41.626 W080°13.756
CGSC OOB	73	1.25	N25°40.889 W080°12.974