



LOS ANGELES YACHT CLUB®

Around Catalina Island Races, #2, 2022

SAILING INSTRUCTIONS AMENDMENT #1 for race 2 Saturday October 8th, 2022

The 2022 Around Catalina Island Races will both be presented by Los Angeles Yacht Club®. LAYC is the Organizing Authority. The club is located at 285 Whaler's Walk, San Pedro, California 90731. The LAYC® telephone number is (310) 831-1203, and the web address is LAYC.org.

1 Course format

The second race (October 8th) will be scored as PHRF TOD overall and will include prizes for the three separate legs using the low point system, as well as overall awards. The race will start inside Los Angeles Harbor as described in the Sailing Instructions and the first leg will finish at the west end of Catalina Island at Eagle Rock Gate. The second leg will start at Eagle Rock Gate and finish at the east end of Catalina Island at Church Rock Gate. The third leg will start at Church Rock Gate and proceed to Angel's Gate, for the finish. See details, below in ¶3.

2 Start

The start will be inside the harbor. Email images of GPS positions confirming the three times to the PRO after finishing at Angel's Gate.

3 Course details.

START inside Los Angeles harbor to Eagle Rock Gate: 24.51 NM leg 1

Eagle Rock Gate: to Church Rock Gate: 19.14 NM leg 2

Church Rock Gate to Angel's Gate: 26.72 NM leg 3

FINISH: The finish line will be between the Angel's Gate Light and the light on the detached breakwater. Competitors shall take their own finish time and the position of other competitors ahead and astern of them as they round the Angel's Gate light and email this to davidcollins@mindspring.com

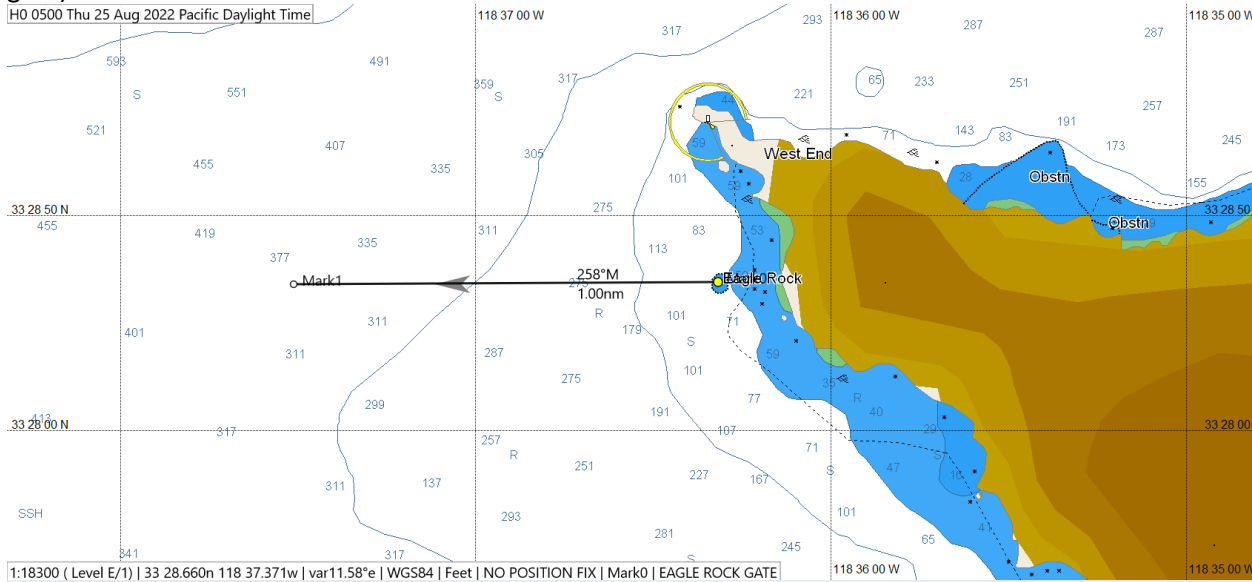
Total distance, 70.37 NM

4 Charts to show the two gates

4.1 Eagle Rock Gate extends one mile due west (true) of Eagle Rock.

Finish leg by passing between the two following scoring gate ends:

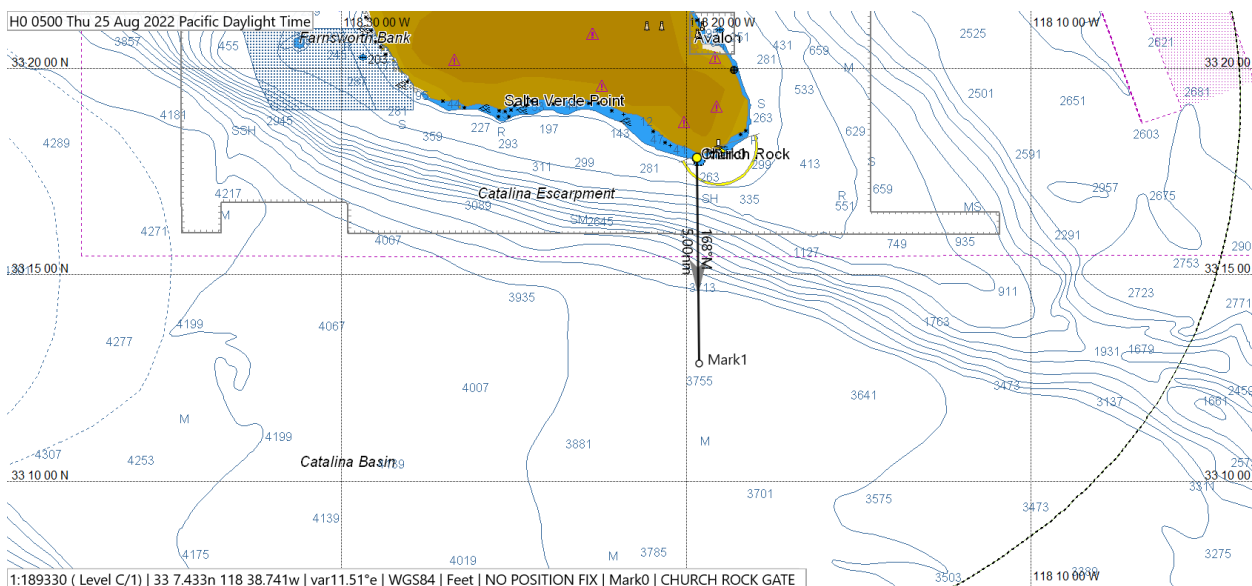
33 28.343n 118 36.315w (Approximate location of Eagle Rock) – 33 28.338n 118 37.510w (Location of Westerly end of gate).



4.2 Church Rock Gate extends five miles due south (true) of Church Rock.

Finish leg by passing between the two following scoring gate ends:

33 17.823n 118 19.654w (Approximate location of Church Rock) – 33 12.828n 118 19.595w (Location of Southerly end of gate).



5 Scoring

It is intended to provide separate prizes for each of the three legs and overall prizes for the race using PHRF TOD with Random Leg Rating. This modifies RRS Appendix A and the NOR. The Santa Catalina Island Trophy will also be awarded. All awards will be presented at a later date.

Race Committee Chairman

Kenneth Corry (714)-357-1079 Racing@LAYC.org

Principal Race Officer

David Collins (310)-310-4914 davidcollins@mindspring.com