



2022 Fall Frostbite Series
Chicago Yacht Club (OA)
October 1 – November 5, 2022
Belmont Station, Chicago, IL

Sailing Instructions (SIs)

ABBREVIATIONS

[NP] Rules that are not grounds for a protest or request for redress by a boat. **This changes RRS 60.1(a).**

1 RULES

- 1.1 The event is governed by the rules as defined in *The Racing Rules of Sailing*.
- 1.2 Appendices T and V1 shall apply.
- 1.3 **[NP]** All applicable governmental regulations regarding health, safety and infectious disease control shall be strictly followed by all competitors.
- 1.4 **[NP]** Based on any public health consideration, competitors agree to follow Centres for Disease Control and Prevention (CDC), State of Illinois and City of Chicago, and the Chicago Yacht Club's policies regarding coronavirus, COVID-19, that are in effect at the time of the event.

2 CHANGES TO SAILING INSTRUCTIONS

- 2.1 Any change to the Sailing Instructions will be posted before 0900 on the day it will take effect, except that any change to the schedule of races will be posted by 2000 on the day before it will take effect.
- 2.2 Changes to sailing instructions may be made on the water: Oral changes may be given on the water per RRS 90.2(c) using the following procedure:
 - a) The signal boat will hoist Code Flag Lima (L) with one sound
 - b) Boats shall come within hailing distance of the signal boat
 - c) Oral changes will be made via VHF on channel 73.
 - d) Any changes that will affect future races in the series will be posted once ashore.

3 COMMUNICATIONS WITH COMPETITORS

- 3.1 Notices to competitors will be posted on the official notice board online at <https://www.regattanetwork.com/event/25351>
- 3.2 On the water, the Race Committee intends to monitor and communicate with competitors via VHF radio on channel 73.
- 3.3 **[DP]** While racing, except in an emergency, a boat shall not make voice or data transmissions and shall not receive voice or data communication that is not available to all boats.

4 CODE OF CONDUCT

[DP] Competitors and support persons shall comply with reasonable requests from race officials.

5 SIGNALS MADE ASHORE

- 5.1 **[NP]** Signals made ashore will be displayed from the main flagpole at the east end of the Belmont Station. In addition, signals made ashore will be distributed, as a courtesy, to the email or text address listed in a boat's entry form. Failure to receive courtesy electronic communications shall not be grounds for a request for redress. **This changes RRS 62.1(a).**
- 5.2 When flag AP is displayed ashore, '1 minute' is replaced with 'not less than 30 minutes' in Race Signals AP.



6 SCHEDULE OF RACES

- 6.1 Onsite registration will be held each day of racing from 0800 to 0845 for the AM session and 1200 to 1245 for the PM session.
- 6.2 There will be two sessions of racing based on the table below. The scheduled time of the first warning for the AM session is 0955. The scheduled time of the first warning for the PM session is 1325.

Date	AM Session			PM Session	
	Laser	V15	Sonar	Sonar	J/70
10/1/22	x	x	x	x	x
10/8/22	x	x	x	x	x
10/15/22	x	x	x	x	x
10/22/22	x	x	x	x	x
10/30/22*	x	x	x	x	x
11/5/22	x	x	x	x	x

*Sunday

- 6.3 The Race Committee will attempt to run as many races as practical.
- 6.4 There will be no warning signal after 1130 for the AM session and no warning signal after 1500 for the PM session.

7 CLASS FLAGS

Class flags will be flags bearing the class insignias.

8 RACING AREA

- 8.1 The racing area will be in the open waters of Lake Michigan approximately one-half mile east of Belmont Harbor.
- 8.2 At the discretion of the Race Committee, racing may take place inside the waters of Belmont Harbor for any reason.

9 COURSES

- 9.1 The diagrams in Addendum A show the courses, the order in which the marks are to be passed, and the side on which each mark is to be left.
- 9.2 For windward/leeward courses (W/L) the course will be displayed as W/L + the number of legs.
- 9.3 For W/L courses, Mark 2 will be a gate. If the gate is not in place, the single leeward Mark 2 shall be left to port.
- 9.4 For W/L courses, Mark 1 may have an offset. If the offset is not in place, the single windward mark shall be left to port.
- 9.5 For the Modified Olympic course (**Course TL**), the course will be displayed as TL + the number of W/L legs to be completed in the triangle.
- 9.6 No later than the warning signal, the Race Committee signal vessel will display the course and approximate compass bearing of the first leg.

10 MARKS

- 10.1 Original marks will be orange inflatable or robotic mark.
- 10.2 New marks, as provided in SI 13, will be yellow shapes for the first change. Subsequent changes will alternate orange and yellow shapes. Offset marks will not be set for a change of course.
- 10.3 The starting mark will be an orange inflatable or robotic mark.
- 10.4 The gate marks, if shown in Appendix A, will be orange inflatable or robotic marks.
- 10.4 The finishing mark will be a shape as defined in Addendum A – Courses.



- 10.5 Routine movement of robotic marks will not be grounds for redress. This includes marks returning to station after having been pushed away by a boat or competitor and collisions with marks that do not cause damage. RRS 31 still applies.
- 11 THE START**
- 11.1 Races will be started using Appendix U, Sound-Signal Starting System. The starting order will be announced on the water.
- 11.2 The starting line will be between a staff displaying an orange flag on the signal boat at the starboard end and the course side of the port-end starting mark.
- 11.3 **[DP]** A boat whose warning signal has not been made shall keep clear of the starting area, defined as the area extending approximately 50 feet to windward, leeward, and either end of the starting line.
- 11.4 Flag K, if displayed before the warning, means CYC Owned Boats shall sail with jib and main only.
- 11.5 If any part of a boat's hull is on the course side of the starting line at her starting signal and she is identified, the Race Committee will attempt to hail her sail number. **[NP]** Failure to hail her number, failure of her to hear such a hail, or the order in which boats are hailed will not be grounds for a redress for request. ***This changes RRS 62.1(a).***
- 11.6 The Race Committee may combine classes for a start by displaying both class flags at the warning.
- 12 CHANGE OF THE NEXT LEG OF THE COURSE**
- 12.1 To change the next leg of the course, the Race Committee will lay a new mark (or move the finishing line) and remove the original mark as soon as practicable. When in a subsequent change a new mark is replaced, it will be replaced by an original mark.
- 12.2 A course change of 15 degrees or less will not be signalled by the Race Committee. The course change will continue to use the active mark. ***This changes RRS 33(a).***
- 13 THE FINISH**
- 13.1 The finishing line is between a staff displaying a blue flag on the signal vessel and the course side of the finishing mark.
- 13.2 Flag A displayed, with no sound signal, while boats are finishing means "No more racing today."
- 14 PENALTY SYSTEM**
- Appendices T and V1 shall apply.
- 15 HEARING REQUESTS**
- 15.1 Protests and requests for redress shall be filed in person at the protest desk at Chicago Yacht Club Belmont Station within the appropriate time limit.
- 15.2 Alternatively, hearing requests forms are available from the US Sailing RRS mobile app and can be submitted to regattamanager@chicagoyachtclub.org within the appropriate time limit.
- 15.3 A boat's protest time limit is 30 minutes from the docking time of the Signal Boat.
- 15.4 Hearings will be held in person at Belmont Station immediately following the racing.
- 16 SCORING**
- 16.1 The Low Point System of RRS Appendix A will apply.
- 16.2 9 races are required to be completed to constitute a series.
- 16.3 Once a series has been completed, each boat may exclude one race for every 5 sailed, for the entire series.
- 16.5 Rule A5.3 applies.
- 16.6 Scoring inquiries shall be emailed to regattamanager@chicagoyachtclub.org.
- 17 SAFETY REGULATIONS**



- 17.1 Each boat shall check in by sailing past the Race Committee signal boat, hailing or displaying her sail number, and receiving an acknowledgement from the Race Committee prior to her first race on each day of racing. A boat found to have broken SI 19.1 may receive a scoring penalty for her first race that day equal to 20% of the number of competitors registered in her class.
- 17.2 A boat that retires from a race shall notify the Race Committee either before leaving the course or, if that is impracticable, immediately after arriving ashore. A boat may notify the Race Committee using the designated VHF hailing channel. A boat found to have broken SI 19.2 may receive a scoring penalty in every race that day equal to 20 percent of the number of competitors registered in her class. ***This changes RRS 63.1.***

18 BERTHING

Boats may be stored at no charge on the north dinghy docks at Chicago Yacht Club Belmont Station for the duration of the series (limited to dinghies). Boats stored on the Belmont Station premises for this event shall be removed by November 13, 2022 at 1800.

19 RISK STATEMENT

Competitors participate in the regatta entirely at their own risk. See RRS 3, Decision to Race. The organizing authority will not accept any liability for material damage, personal injury, or death sustained in conjunction with or prior to, during, or after the regatta.

20 PRIZES

Prizes will be awarded in accordance with the NoR.

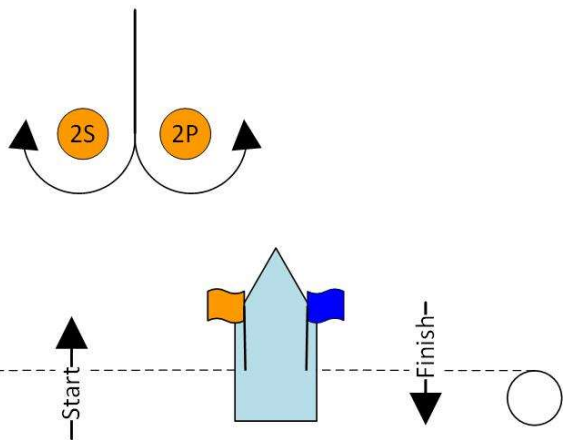
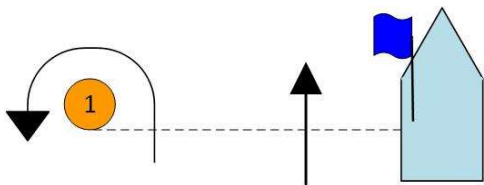
21 FURTHER INFORMATION

Regatta Manager
Chicago Yacht Club
400 E Monroe St, Chicago, IL 60603
312-861-7777, Ext. 5562 (o)
312-617-2279 (m)
regattamanager@chicagoyachtclub.org

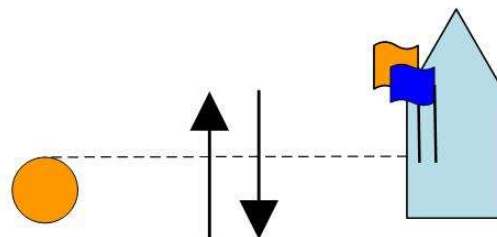
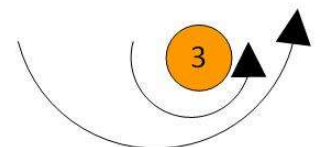
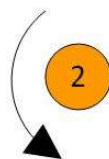
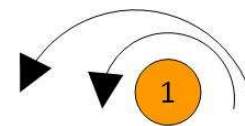


ADDENDUM A COURSES

Course W – Windward/Leeward	
Signal	Mark Rounding Order
W4	Start - 1 - 2 - 1 - Finish
W5	Start - 1 - 2 - 1 - 2 - Finish
W6	Start - 1 - 2 - 1 - 2 - 1 - Finish



Course TL – Windward/Leeward	
Signal	Mark Rounding Order
TL2	Start - 1 - 2 - 3 - 1 - Finish
TL3	Start - 1 - 2 - 3 - 1 - 3 - 1 - Finish
TL4	Start - 1 - 2 - 3 - 1 - 3 - 1 - 3 - 1 - Finish





Course W – Windward/Leeward	
Signal	Mark Rounding Order
W4	Start - 1 - 2 - 1 - Finish
W5	Start - 1 - 2 - 1 - 2 - Finish
W6	Start - 1 - 2 - 1 - 2 - 1 - Finish

Course B – Windward/Leeward	
Signal	Mark Rounding Order
B4	Start - 1 - 2 - 1 - Finish
B6	Start - 1 - 2 - 1 - 2 - 1 - Finish

