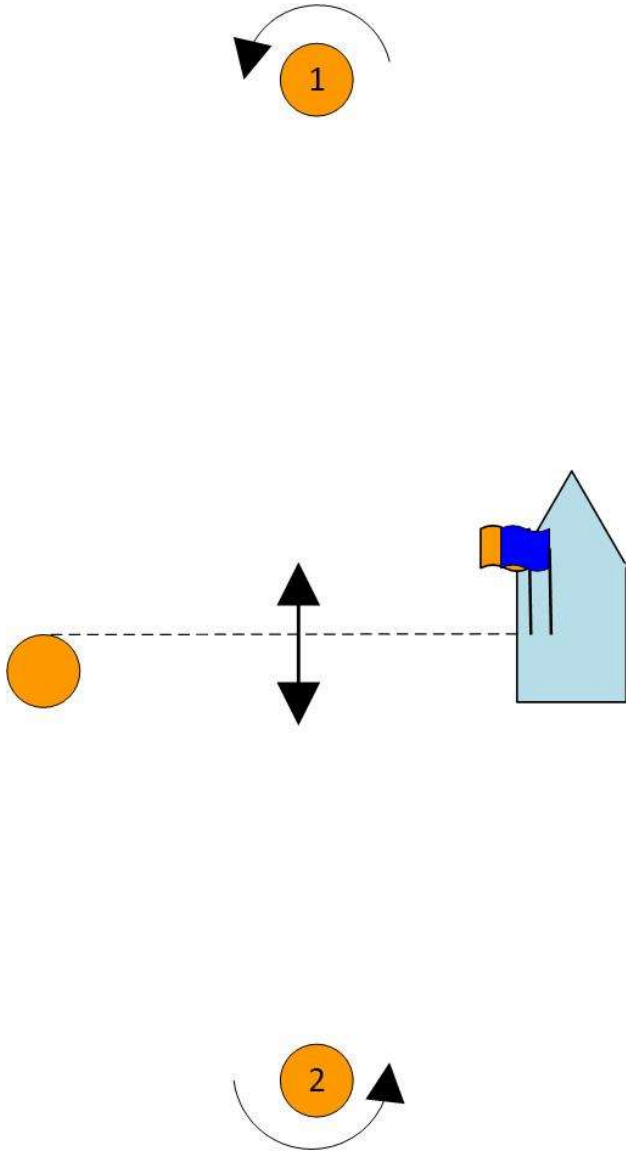


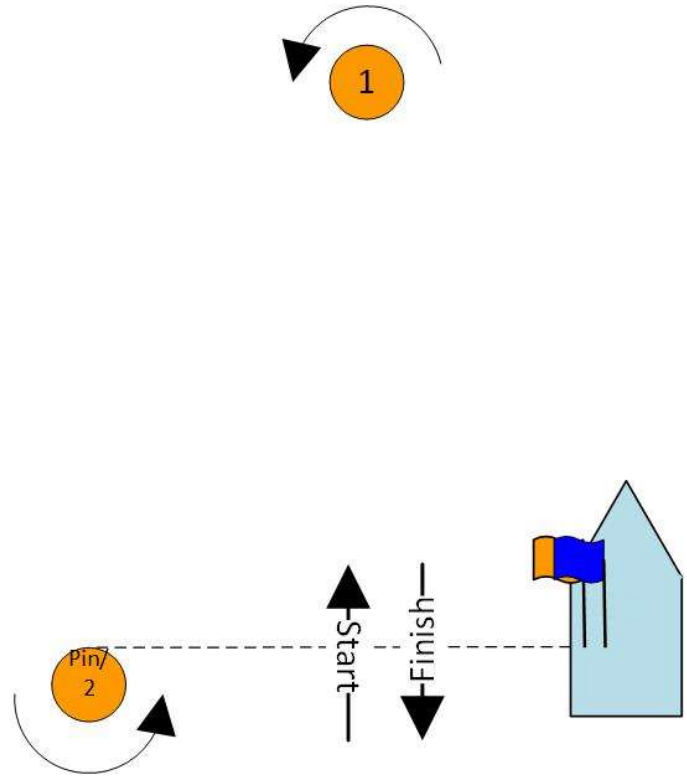


ADDENDUM B COURSES

Course M – Windward/Leeward	
<i>Signal</i>	<i>Mark Rounding Order</i>
M3	Start – 1 – 2 - Finish
M4	Start - 1 - 2 - 1 - Finish
M5	Start - 1 - 2 - 1 - 2 - Finish
M6	Start - 1 - 2 - 1 - 2 - 1 - Finish



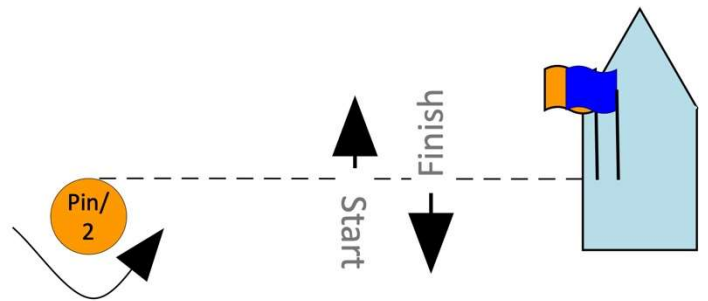
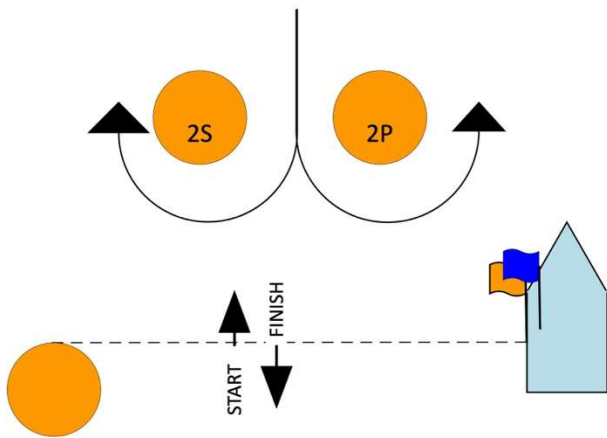
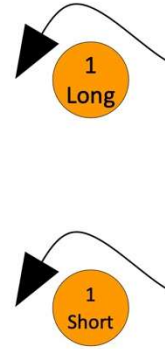
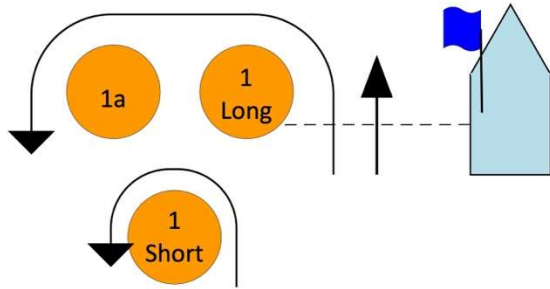
Course B – Windward/Leeward	
<i>Signal</i>	<i>Mark Rounding Order</i>
B4	Start - 1 - 2 - 1 - Finish
B6	Start - 1 - 2 - 1 - 2 - 1 - Finish





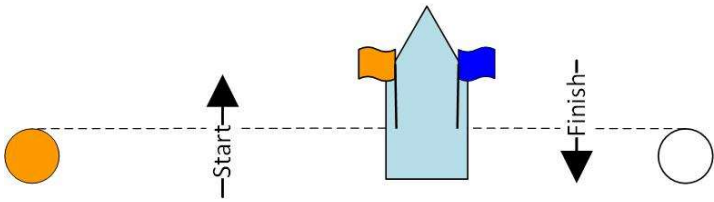
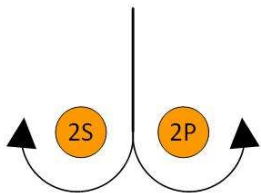
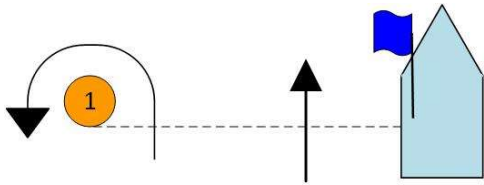
Course WS – Windward/Leeward	
Signal	Mark Rounding Order
WS4	Start - 1 - 2 - 1 - Finish
WS5	Start - 1 - 2 - 1 - 2 - Finish
WS6	Start - 1 - 2 - 1 - 2 - 1 - Finish

Course BS – Windward/Leeward	
Signal	Mark Rounding Order
BS4	Start - 1 - 2 - 1 - Finish
BS6	Start - 1 - 2 - 1 - 2 - 1 - Finish

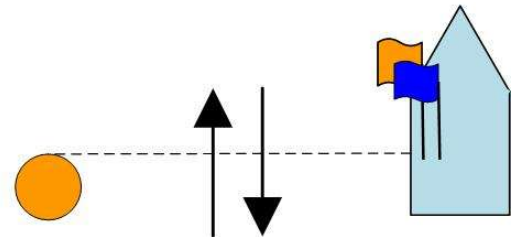
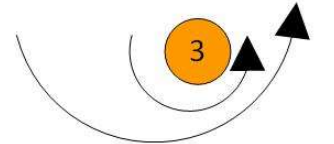
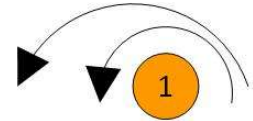




Course W – Windward/Leeward	
Signal	Mark Rounding Order
W4	Start - 1 - 2 - 1 - Finish
W5	Start - 1 - 2 - 1 - 2 - Finish
W6	Start - 1 - 2 - 1 - 2 - 1 - Finish



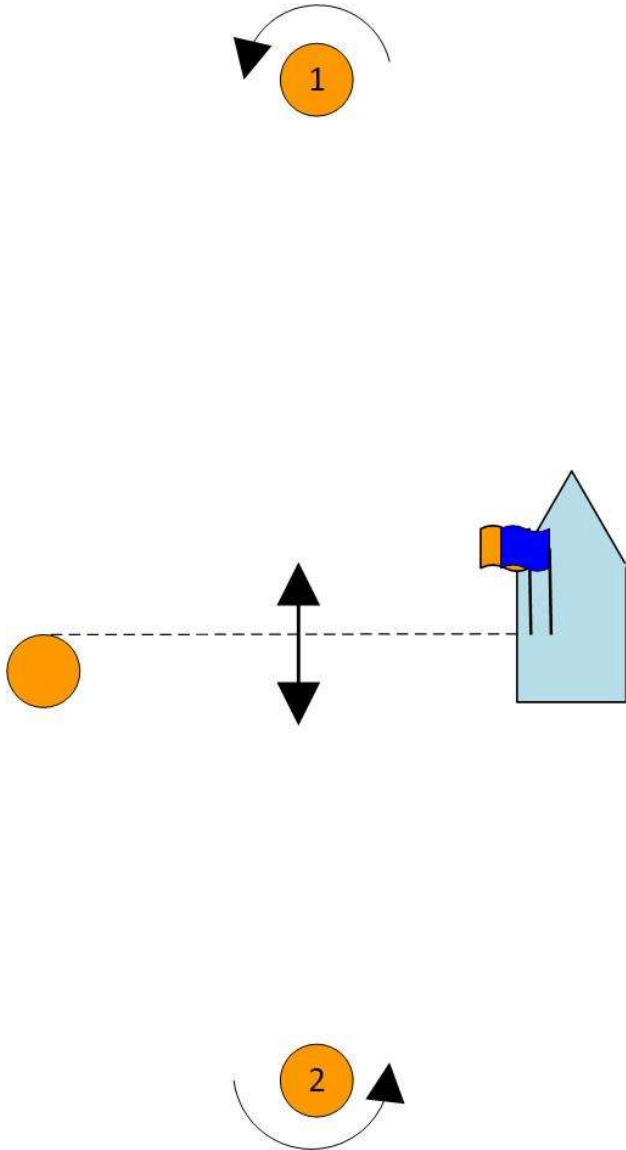
Course TL – Windward/Leeward	
Signal	Mark Rounding Order
TL2	Start - 1 - 2 - 3 - 1 - Finish
TL3	Start - 1 - 2 - 3 - 1 - 3 - 1 - Finish
TL4	Start - 1 - 2 - 3 - 1 - 3 - 1 - 3 - 1 - Finish



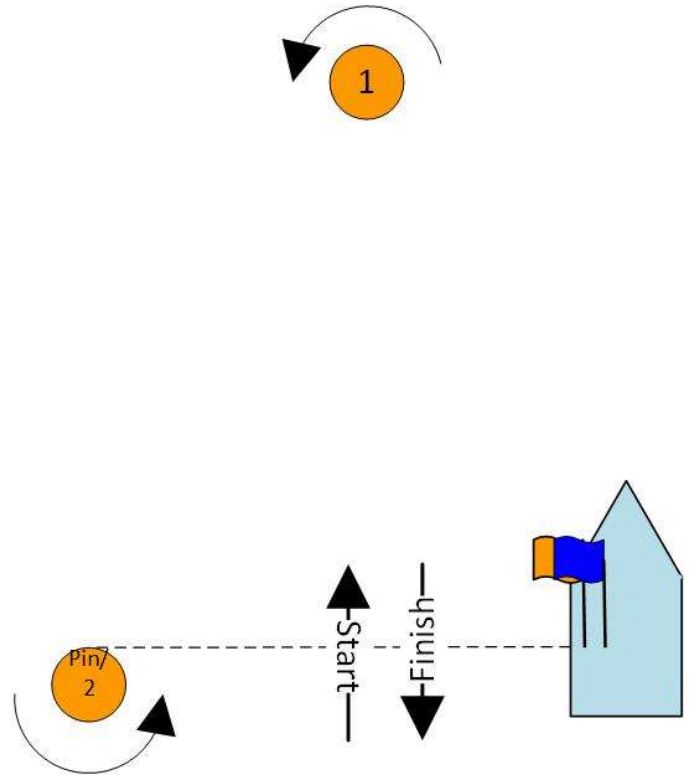


ADDENDUM B COURSES

Course M – Windward/Leeward	
<i>Signal</i>	<i>Mark Rounding Order</i>
M3	Start – 1 – 2 - Finish
M4	Start - 1 - 2 - 1 - Finish
M5	Start - 1 - 2 - 1 - 2 - Finish
M6	Start - 1 - 2 - 1 - 2 - 1 - Finish



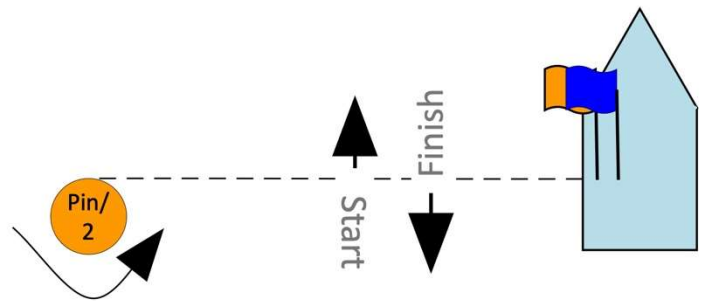
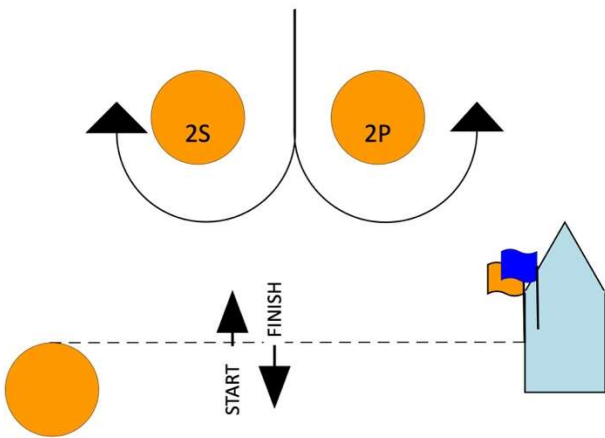
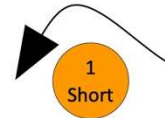
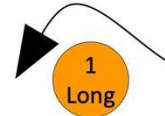
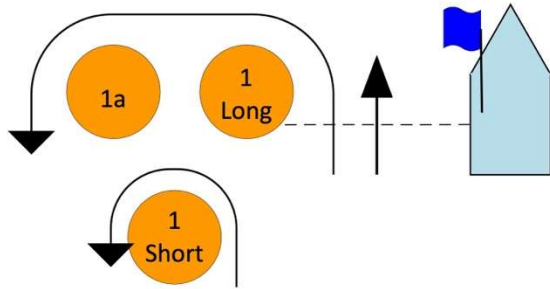
Course B – Windward/Leeward	
<i>Signal</i>	<i>Mark Rounding Order</i>
B4	Start - 1 - 2 - 1 - Finish
B6	Start - 1 - 2 - 1 - 2 - 1 - Finish





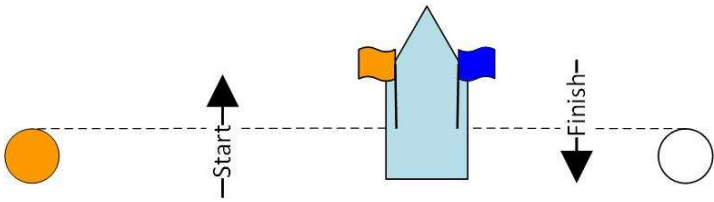
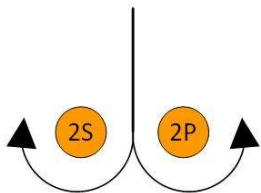
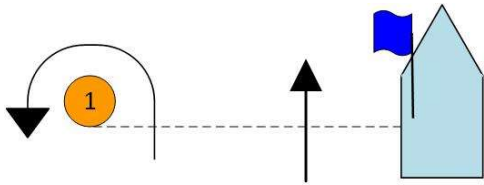
Course WS – Windward/Leeward	
Signal	Mark Rounding Order
WS4	Start - 1 - 2 - 1 - Finish
WS5	Start - 1 - 2 - 1 - 2 - Finish
WS6	Start - 1 - 2 - 1 - 2 - 1 - Finish

Course BS – Windward/Leeward	
Signal	Mark Rounding Order
BS4	Start - 1 - 2 - 1 - Finish
BS6	Start - 1 - 2 - 1 - 2 - 1 - Finish

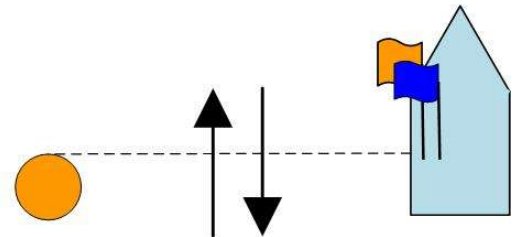
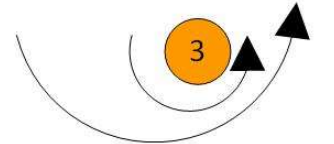
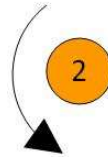
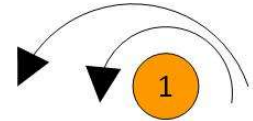




Course W – Windward/Leeward	
Signal	Mark Rounding Order
W4	Start - 1 - 2 - 1 - Finish
W5	Start - 1 - 2 - 1 - 2 - Finish
W6	Start - 1 - 2 - 1 - 2 - 1 - Finish



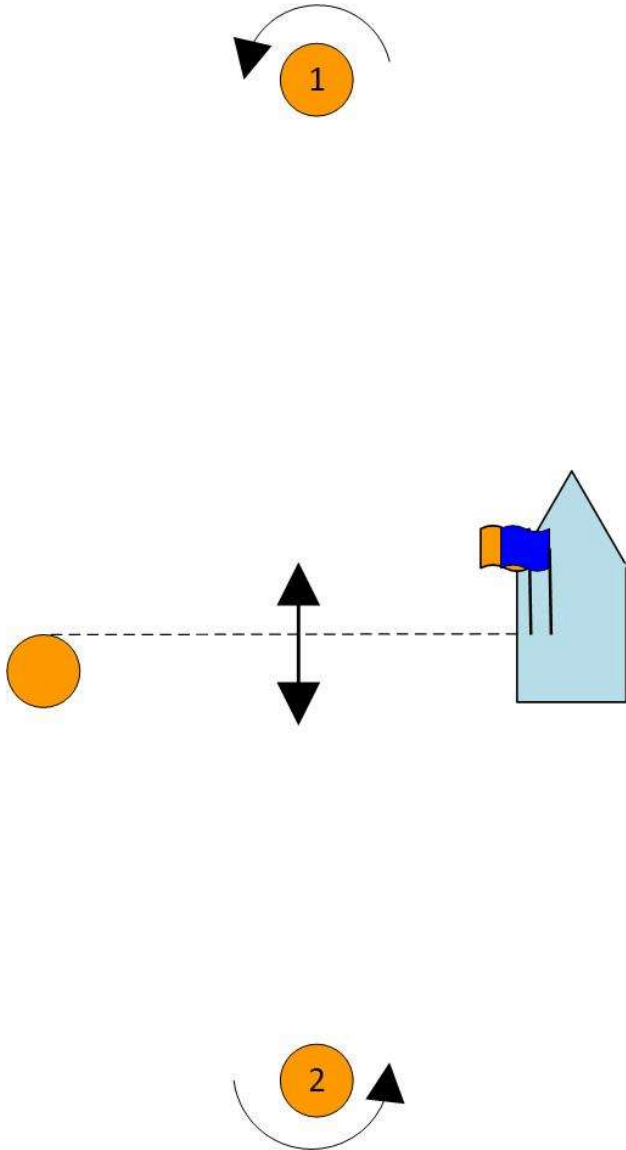
Course TL – Windward/Leeward	
Signal	Mark Rounding Order
TL2	Start - 1 - 2 - 3 - 1 - Finish
TL3	Start - 1 - 2 - 3 - 1 - 3 - 1 - Finish
TL4	Start - 1 - 2 - 3 - 1 - 3 - 1 - 3 - 1 - Finish



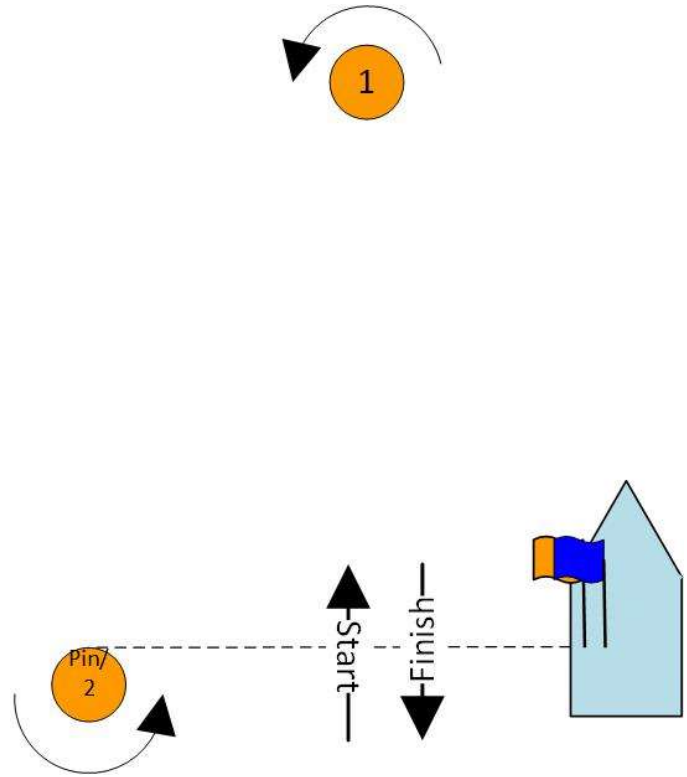


ADDENDUM B COURSES

Course M – Windward/Leeward	
<i>Signal</i>	<i>Mark Rounding Order</i>
M3	Start – 1 – 2 – Finish
M4	Start - 1 - 2 - 1 - Finish
M5	Start - 1 - 2 - 1 - 2 - Finish
M6	Start - 1 - 2 - 1 - 2 - 1 - Finish



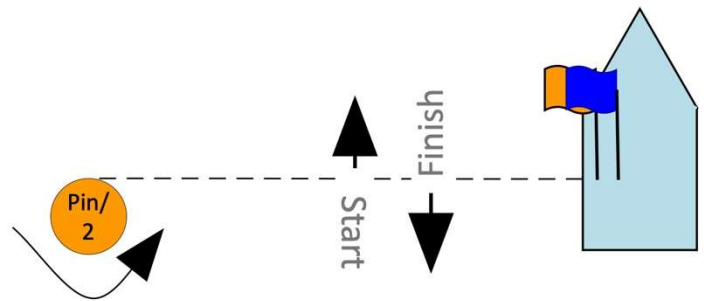
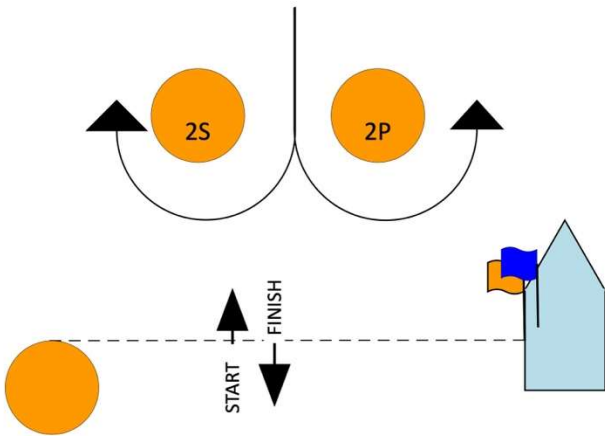
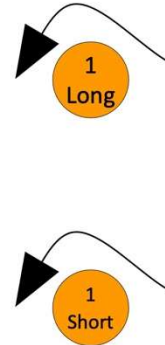
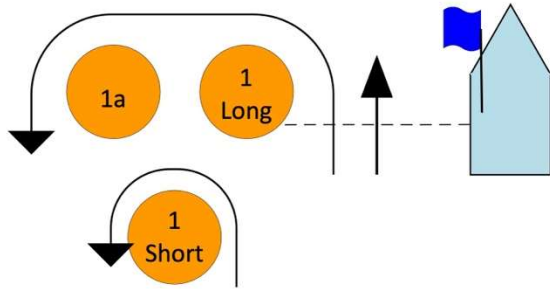
Course B – Windward/Leeward	
<i>Signal</i>	<i>Mark Rounding Order</i>
B4	Start - 1 - 2 - 1 - Finish
B6	Start - 1 - 2 - 1 - 2 - 1 - Finish





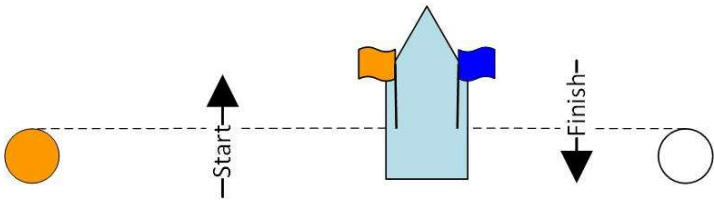
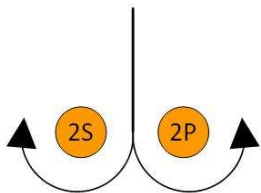
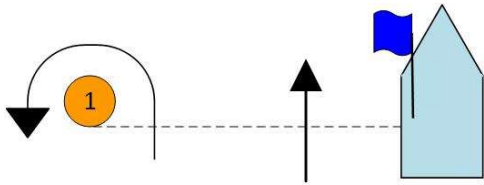
Course WS – Windward/Leeward	
Signal	Mark Rounding Order
WS4	Start - 1 - 2 - 1 - Finish
WS5	Start - 1 - 2 - 1 - 2 - Finish
WS6	Start - 1 - 2 - 1 - 2 - 1 - Finish

Course BS – Windward/Leeward	
Signal	Mark Rounding Order
BS4	Start - 1 - 2 - 1 - Finish
BS6	Start - 1 - 2 - 1 - 2 - 1 - Finish





Course W – Windward/Leeward	
Signal	Mark Rounding Order
W4	Start - 1 - 2 - 1 - Finish
W5	Start - 1 - 2 - 1 - 2 - Finish
W6	Start - 1 - 2 - 1 - 2 - 1 - Finish



Course TL – Windward/Leeward	
Signal	Mark Rounding Order
TL2	Start - 1 - 2 - 3 - 1 - Finish
TL3	Start - 1 - 2 - 3 - 1 - 3 - 1 - Finish
TL4	Start - 1 - 2 - 3 - 1 - 3 - 1 - 3 - 1 - Finish

