



TAMPA YACHT & COUNTRY CLUB

TYCC Wednesday Night Portsmouth Series

NOR

Each Wednesday from March 15th – October 25th

1 RULES

- 1.1 The regatta will be governed by the rules as defined in *The Racing Rules of Sailing* and the *Portsmouth Yardstick*.

2 ELIGIBILITY AND ENTRY

- 2.1 The regatta is open to all centreboard classes and keel boats 19 feet and under that have registered. The entry fee is \$5.
- 2.2 Eligible boats may register online at <https://www.regattanetwork.com/event/25465>

3 SCHEDULE

- 3.1 Racing will be held Wednesdays during daylight saving time. Two races are scheduled each Wednesday. There will be a rest week after each series.

3.2

| | |
|--|---|
| Spring A March 15 March 22 March 29 April 5 April 12 | Spring B April 26 May 3 May 10 May 17 May 24 |
| Summer A May 31 June 7 June 14 June 21 June 28 | Summer B July 12 July 19 July 26 Aug 2 Aug 9 |
| Fall A August 16 August 23 August 30 September 6 September 13 | Fall B September 27 October 4 October 11 October 18 October 25 |

4

SAILING INSTRUCTIONS

The sailing instructions will be available online at www.tampayacht.com on the 9th of March.

5

SAILING AREA

5.1 Attachment A shows the location of the racing areas.

6 THE COURSES

The diagrams in Attachment B show the courses, including the approximate angles between legs, the order in which marks are to be passed, and the side on which each mark is to be left. The approximate course length will be 25 minutes.

7 SCORING

- 7.1 Each boat's finishing place shall be determined using the Portsmouth Yardstick
- 7.2 Boats without a RYA PY number will race using an Experimental PY number generated from their DPN. Adjustments to Experimental PY numbers will be made between series using the RYA PY online returns system.
- 7.3 The Series will use the low points scoring system.
- 7.4 1 race is required to be completed to constitute a series.
- 7.5
 - (a) When fewer than 5 races have been completed, a boat's series score will be the total of her race scores.
 - (b) When 6 or more races have been completed, a boat's series score will be the total of her race scores excluding worst score.
 - (c) When 8 or more races have been completed a boat's series score will be the total of her race scores excluding her two worst scores.
- 7.6 Season Scoring
 - (a) To qualify for a series a competitor must complete at least 50% of that series' races.
 - (b) The Season will be scored using a boat's 3 best series scores
 - (c) Boats must Qualify in at least 2 series to be eligible for the season.
- 7.7 Competitors undertaking race committee duties may claim average points for 1 race per series.

8 PRIZES

Prizes shall be awarded at the discretion of the Race Committee.

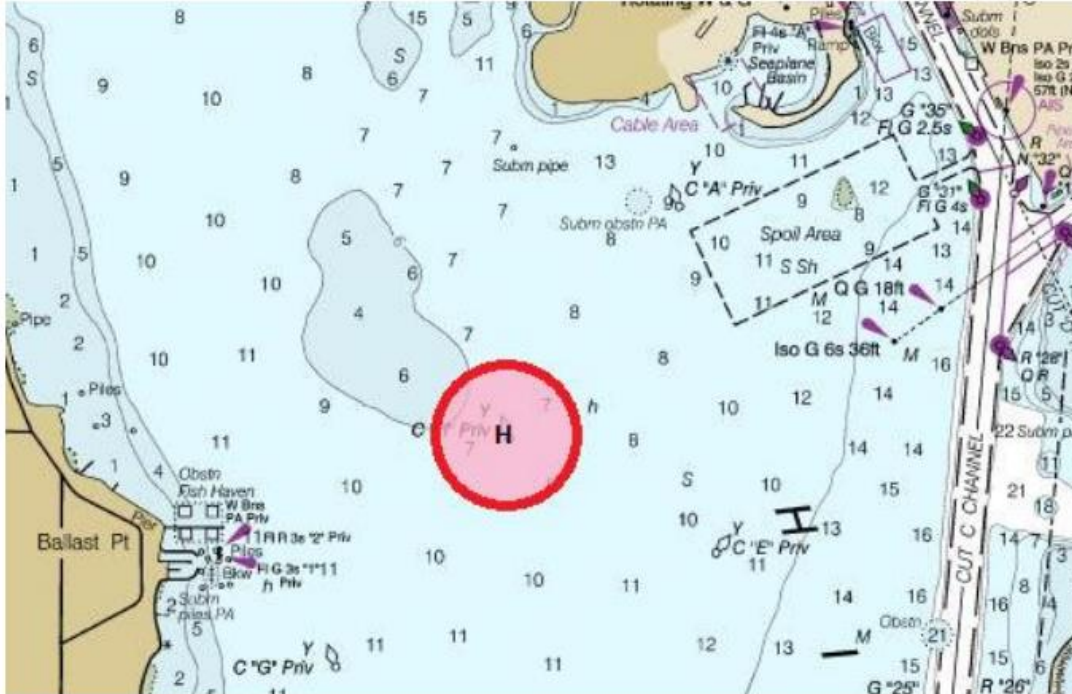
9 DISCLAIMER OF LIABILITY

Competitors participate in the regatta entirely at their own risk. See RRS 3, Decision to Race. The organizing authority will not accept any liability for material damage or personal injury or death sustained in conjunction with or prior to, during, or after the regatta. Participants will be required to sign a waiver to register.

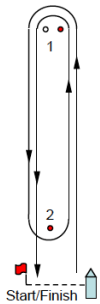
10 FURTHER INFORMATION

For further information please contact Kit Fortescue waterfront@tampayacht.com or visit tampayacht.com

A RACING AREA



B COURSE



W1: Start-1-Finish W2: Start-1-2-1-Finish