

Florida Sunfish Regional Championship
February 11-12, 2023
Sarasota Sailing Squadron

SAILING INSTRUCTIONS (SIs)

The notation '[NP]' in a rule of the sailing instructions (SIs) means that a boat may not protest another boat for breaking that rule. This changes RRS 60.1(a).

The notation '[DP]' in a rule of the sailing instructions (SIs) means that the penalty for breaking a non-Part 2 shall be at the discretion of the Protest Committee. This changes RRS 64.2.

1 RULES

- 1.1 The event is governed by the rules as defined in *The Racing Rules of Sailing*.
- 1.2 RRS 40.1 is applicable to this event.
- 1.3 Only the following U.S. Sailing prescriptions will apply: the prescriptions to RRS 60.3, 61.4, 67, 70.5, 76.1, and Appendix R.
- 1.4 RRS 32, 34, 35, 44.1, 60.1, 64.2, A5.1, A5.2, A10, and Race Signals are changed in these SIs.

2 CHANGES TO SAILING INSTRUCTIONS

- 2.1 Any change to the sailing instructions will be posted before 0900 on the day it will take effect, except that any change to the schedule of races will be posted by 2000 on the day before it will take effect.

3 COMMUNICATIONS WITH COMPETITORS

- 3.1 Notices to competitors will be posted on the official notice board located at <https://www.regattanetwork.com/event/25480>. Notices may also be posted on the unofficial notice board located at the SSS Pavilion.
- 3.2 The race office is located in the Sarasota Sailing Squadron office.
- 3.3 [DP] While racing, except in an emergency, a boat shall not make voice or data transmissions and shall not receive voice or data communication that is not available to all boats.

4 CODE OF CONDUCT

- 4.1 [DP] Competitors and support persons shall comply with reasonable requests from race officials.

5 SIGNALS MADE ASHORE

- 5.1 Signals made ashore will be displayed at the flagpole located east of the

SSS clubhouse.

- 5.2 When flag AP is displayed ashore, '1 minute' is replaced with 'not less than 60 minutes' in Race Signals AP. This changes RRS Race Signals.
- 5.3 [DP] When flags AP over H are displayed ashore, it means 'boats shall not leave the dock or shore while this signal is displayed.' The warning signal will not be made less than 60 minutes after AP over H is lowered. This changes RRS Race Signals.

6 SCHEDULE OF RACES

- 6.1 Four races are scheduled on Saturday and three races are scheduled on Sunday. If four races are not completed on Saturday, one extra race may be sailed on Sunday subject to 6.4 below.
- 6.2 The scheduled time of the warning signal for the first race on Saturday is 1055 and on Sunday is 0955.
- 6.3 To alert boats that a race or sequence of races will begin soon, the orange starting line flag will be displayed with one sound at least five minutes before a warning signal is made, and the race committee may signal an alert consisting of multiple sounds one minute before the warning signal is made.
- 6.4 On the last scheduled day of racing no warning signal will be made after 1400.

7 CLASS FLAGS

- 7.1 The Class flag is white with the Sunfish class insignia.

8 RACING AREA

- 8.1 The racing area is Sarasota Bay NNW of New Pass Channel, as shown in SI Addendum A.

9 COURSES

- 9.1 The diagram in SI Addendum B show(s) the course, including the approximate angles between legs, the order in which marks are to be passed, and the side on which each mark is to be rounded.
- 9.2 Mark 2p is a mark of the course on the second downwind leg and must be passed to port.
- 9.3 If the offset mark is missing, competitors need only to round the windward mark. This changes RRS 34.
- 9.4 If one of the two gate marks is missing, the remaining gate mark shall be rounded to port. This changes RRS 34.
- 9.5 No later than the warning signal, the race committee signal vessel will display the approximate compass bearing of the first leg.
- 9.6 Courses will not be shortened to less than two legs. This changes RRS 32.

10 MARKS

10.1 Mark(s) 1, 2s and 2p are orange tetrahedrons; mark 1a is an orange ball.

10.2 New marks, as provided in SI 12, will be yellow tetrahedrons.

11 THE START

11.1 Races will be started using RRS 26 with the warning signal made five minutes before the starting signal.

11.2 The starting line is between a staff displaying an orange flag on the signal vessel at the starboard end and a staff displaying an orange flag on the RC boat at the port end.

11.3 A boat that does not start within five minutes after her starting signal will be scored Did Not Start without a hearing. This changes RRS A5.1 and A5.2.

12 CHANGE OF THE NEXT LEG OF THE COURSE

12.1 To change the next leg of the course, the race committee will lay a new mark and remove the original mark as soon as practicable. When in a subsequent change a new mark is replaced, it will be replaced by the original mark.

13 THE FINISH

13.1 The finishing line is between a staff displaying a blue flag on the signal vessel at the starboard end and a staff displaying a blue flag on the RC boat or an orange ball at the port end.

14 PENALTY SYSTEM

14.1 RRS 44.1 is changed so that the Two-Turns Penalty is replaced by the One-Turn Penalty other than with respect to incidents within the zone. This changes RRS 44.1.

15 TIME LIMITS

15.1 The Mark 1 Time Limit, Race Time Limit (see RRS 35), and the Finishing Window are shown in the table below.

Mark 1 Time Limit	Race Time Limit	Finishing Window
<i>30 minutes</i>	<i>90 minutes</i>	<i>15 minutes</i>

15.2 If no boat has passed the first mark within the Mark 1 Time Limit, the race will be abandoned.

15.3 The Finishing Window is the time for boats to finish after the first boat sails the course and finishes. Boats failing to finish within the Finishing Window, and not subsequently retiring, penalized or given redress, will

be scored Time Limit Expired (TLE) without a hearing. A boat scored TLE shall be scored points for the finishing place two more than the points scored by the last boat that finished within the Finishing Window. This changes RRS 35, A5.1, A5.2 and A10.

16 HEARING REQUESTS

- 16.1 The protest time limit is 2 hours after the last boat finishes the last race of the day or the race committee signals no more racing today, whichever is later. The time will be posted on the official notice board.
- 16.2 Hearing request forms are available from the race office.
- 16.3 Notices will be posted no later than 30 minutes after the protest time limit to inform competitors of hearings in which they are parties or named as witnesses. Hearings will be held in the protest room, located in the race office.

17 SCORING

- 17.1 The scoring system in RRS Appendix A shall be used, except that boat's series score is the total of her race scores unless, when five or more races have been completed, a boat's series score is the total of her race scores excluding her worst score.
- 17.2 One race is required to be completed to constitute a series.
- 17.3 Rule A5.3 applies.

18 SAFETY REGULATIONS

- 18.1 [DP] Each boat shall check in with the race committee no later than 10 minutes before the scheduled first warning on each day of racing by sailing past the stern of the signal vessel and hailing her sail number until acknowledged.
- 18.2 [DP] A boat that retires from a race or leaves the racing area shall notify the race committee at the first reasonable opportunity.

19 REPLACEMENT OF CREW OR EQUIPMENT

- 19.1 [DP] Substitution of damaged or lost equipment is not allowed unless authorized in writing by the race committee. Requests for substitution shall be made to the race committee at the first reasonable opportunity, which may be after the race.

20 EQUIPMENT AND MEASUREMENT CHECKS

- 20.1 A boat or equipment may be inspected at any time for compliance with the class rules, notice of race and sailing instructions.

21 SUPPORT TEAMS

- 21.1 [DP] Coaches and other support persons shall stay outside areas where boats are racing from the time of the warning signal for the first start until all boats have finished or retired or the race committee signals a postponement or abandonment.

- 21.2 Support person vessels shall identify themselves while in the vicinity of the racing area by displaying a flag which will be supplied by the Organizing Authority.
- 21.3 Each support vessel shall carry a VHF radio, shall monitor the race committee channel, and shall perform the functions of a safety boat upon the request of the race committee.

22 TRASH DISPOSAL

- 22.1 Trash may be placed aboard any official vessel other than the signal vessel.

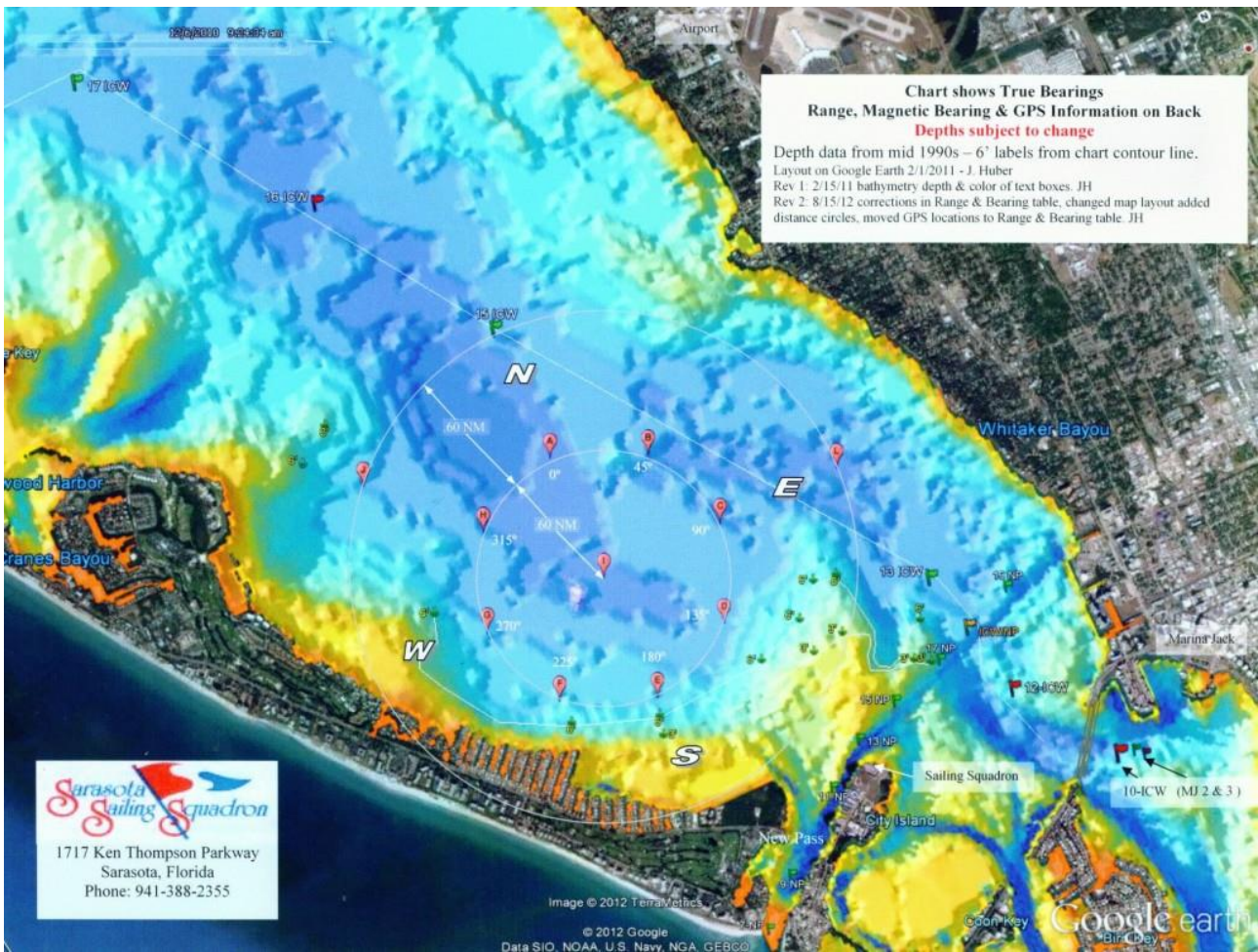
23 PRIZES

- 23.1 Prizes will be given to the top three competitors, the top female competitor and the top youth competitor.

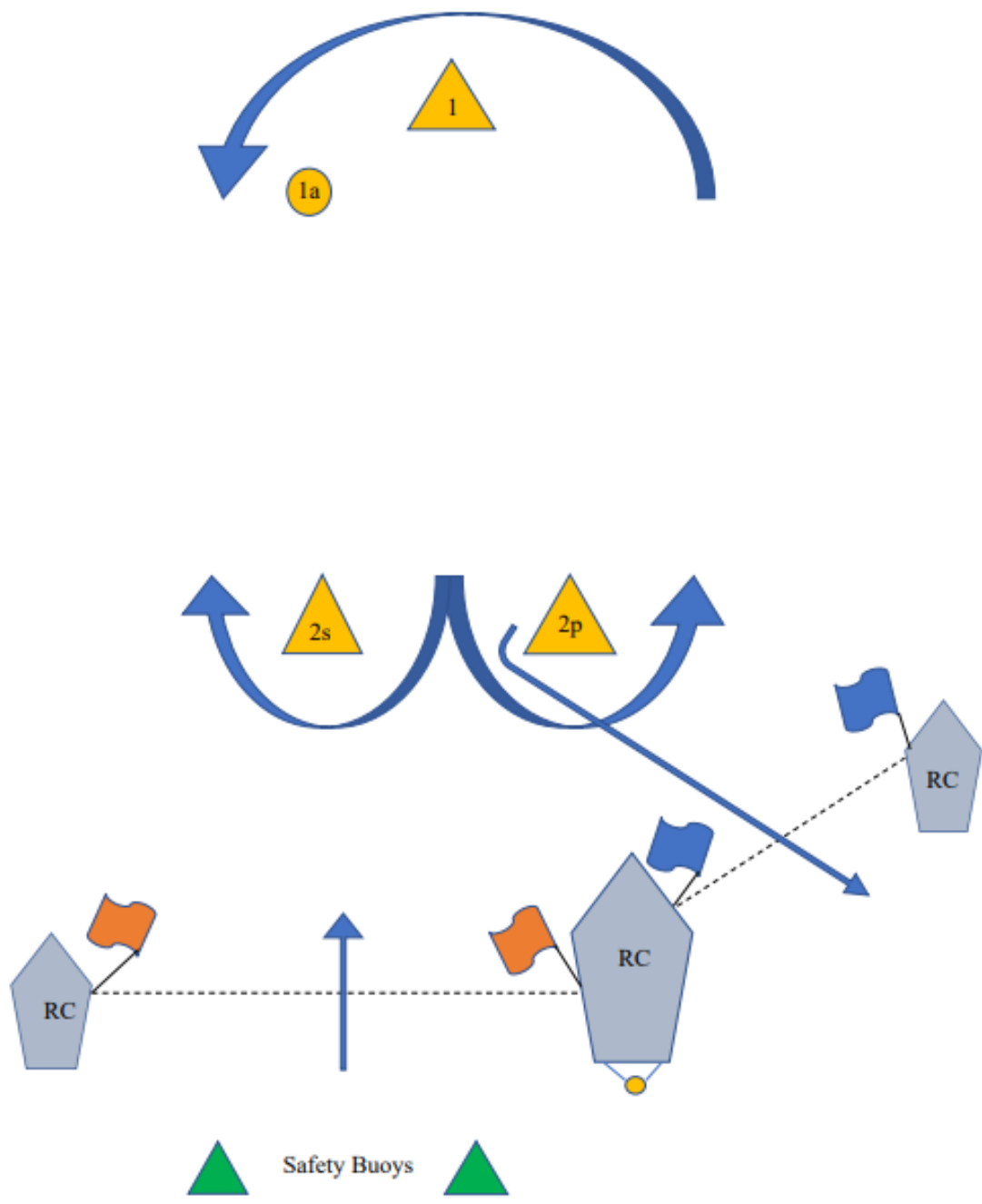
24 RISK STATEMENT

- 24.1 RRS 3 states: 'The responsibility for a boat's decision to participate in a race or to continue to race is hers alone.' By participating in this event each competitor agrees and acknowledges that sailing is a potentially dangerous activity with inherent risks. These risks include strong winds and rough seas, sudden changes in weather, failure of equipment, boat handling errors, poor seamanship by other boats, loss of balance on an unstable platform and fatigue resulting in increased risk of injury.
- Inherent in the sport of sailing is the risk of permanent, catastrophic injury or death by drowning, trauma, hypothermia or other causes.**

Addendum A - Racing Area



Addendum B – Course Diagram



COURSE
Start – 1 – 1a – 2s/2p – 1 – 1a – 2p - Finish