



# **William Berger & William Stein Series Race 1—Malibu/Topanga & Return**

***Jan. 7, 2023***

**Del Rey Yacht Club**

**13900 Palawan Way, Marina del Rey, CA 90292 (310) 823-4664**

## **SAILING INSTRUCTIONS**

### **1 RULES**

- 1.1 The event is governed by the rules as defined in the *Racing Rules of Sailing* (RRS).
- 1.2 [DP] Competitors are reminded that RRS Appendix G1.2 requires “sail letters and numbers shall be of a contrasting colour (sic) to the body of the sail”.

### **2 CHANGES TO SAILING INSTRUCTIONS**

- 2.1 Any changes to the SIs will be posted before 0900 on the day of the race.
- 2.2 Changes to a SI may be made on the water by the RC transmitting the changes on VHF radio channel 68.

### **3 COMMUNICATION WITH COMPETITORS**

- 3.1 Notices to competitors will be posted on the official notice board located at dryc.org.
- 3.2 On the water the RC intends to monitor and communicate with competitors on VHF radio channel 68. Check-in will be on VHF channel 69, see SI 4.1.

### **4 SCHEDULE & CLASS FLAGS**

- 4.1 The day of the race each boat shall check-in with the RC on VHF channel **69** via this process:
  - The RC will conduct three (3) roll calls at approximately 1100, 1120, and 1140. Boats that do not respond by name during one roll call shall respond when hailed during the next roll call. Boats must not initiate checking in before or after roll calls; the RC will not respond.
  - Names of boats not yet checked in will be hailed by the RC in alphabetical order.
  - Boats must respond immediately after hearing their name hailed by the RC.
  - The RC will immediately confirm receipt of a boat’s transmission.
  - A boat is not checked in until the RC has confirmed her transmission. A boat that fails to check in, but sails the course and finishes, shall have ten minutes added to her finishing time. This changes RRS 63.1 and A5.
- 4.2 The scheduled time of the first warning is 1155. Multiple sounds may be made approximately one minute before the first warning.
- 4.3 Classes, Flags and scheduled warning times are shown in NoR Addendum A, which will be posted no later than 1700 Friday Jan 6.

## 5 COURSES & MARKS

5.1 From the starting line sail the course signaled by the RC

5.2 **MALIBU:** 22nm, signal flag E (Echo). Proceed to the Malibu Coast Guard Buoy located at approximately 34° 02.087' N, 118° 40.222' W. This buoy is a white ball with a blue stripe and "CG" in black letters; Round this mark leaving it to port and proceed to SI 5.5



5.3 **BIG ROCK:** 17nm, signal flag F (Foxtrot). Proceed to the inflatable mark located at approximately 34° 01.896' N, 118° 36.839' W. Round this mark leaving it to port and proceed to SI 5.5.



5.4 **TOPANGA:** 13nm, signal flag G (Golf). Proceed to the inflatable mark at approximately 34° 01.800' N, 118° 33.804' W. Round this mark leaving it to port and proceed to SI 5.5.



5.5 Proceed to the inflatable mark near the south end of the detached MdR breakwater (see the diagram in SI 7). Round this mark to port and proceed to the finishing line, SI 7.1

## 6 THE START

6.1 The starting area is in the vicinity of the Marina Del Rey "H" Mark.

6.2 The starting line will be between the course side of an inflatable mark and the staff of an orange flag on the RC signal boat.

6.3 The RC will attempt to hail the sail numbers and/or names of OCS boats. Failure to hear a hail shall not be grounds for redress.

6.4 A boat that does not start within 10 minutes after her starting signal will be scored Did Not Start without a hearing. This changes RRS A5.1 and 5.2.

## 7 THE FINISH

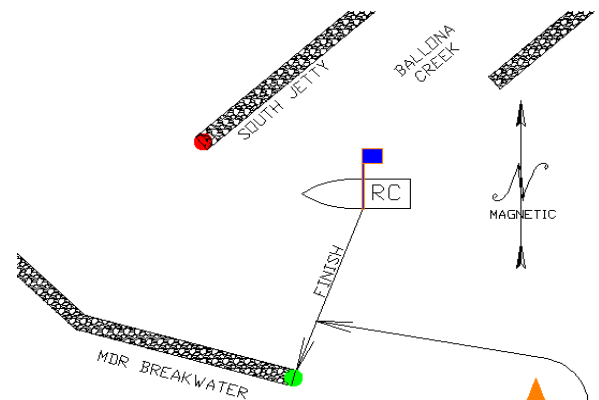
7.1 The finishing line is between a blue flag on the RC boat and the green light on the MdR detached breakwater.

7.2 **PHRF AA** boats shall hail the RC on VHF channel 68 when they are approximately five minutes from finishing.

7.3 After sunset, boats shall illuminate their sail numbers to make them visible to the RC.

7.4 [DP]The RC intends to be on station until 2000. If the RC is absent when a boat finishes she shall take her finish time when the green light on the detached breakwater bears 200°m. Within 30 minutes after finishing enter your sail number and finish time on the subject line of an email and send it to [racers@dryc.org](mailto:racers@dryc.org)

7.5 [DP] All finishers shall record their finishing time, the boat ahead, and the boat behind. If requested, this information shall be given to the RC.



Inflatable Mark approx. location.

33° 57.352 N

118° 27.582 W

May be illuminated

## 8 TIME LIMITS

- 8.1 If no boat in a class finishes by 2000, the race for that class will be abandoned.
- 8.2 The time limit (TL) for finishing is 2200. Boats not finishing before the TL will be scored Time Limit Expired (TLE) without a hearing. A boat scored TLE shall be scored points for the finishing place one more than the points scored by the last boat that finished before the time limit. This changes RRS 35, A5.1, A5.2, and A10.

## 9 HEARING REQUESTS

- 9.1 The protest time limit is one hour after a boat finishes or retires. Protests shall be submitted by emailing to [racers@dryc.org](mailto:racers@dryc.org), or dropped off at DRYC's front desk. For email submittals, the subject line shall be your sail number followed by the word protest. The time the email was sent will be the submittal time.
- 9.2 Hearing request forms are available from US Sailing: [https://www.ussailing.org/wp-content/uploads/2022/01/US\\_Sailing\\_Hearing\\_Request\\_Form\\_20210301\\_Fillable.pdf](https://www.ussailing.org/wp-content/uploads/2022/01/US_Sailing_Hearing_Request_Form_20210301_Fillable.pdf) .
- 9.3 Parties to the protest will be notified of the time and place of the hearing.

## 10 SAFETY REGULATIONS

- 10.1 [DP] A boat that retires shall notify the RC at the first reasonable opportunity on VHF Chn 68.
- 10.2 [DP] No more than 30 minutes after retiring an email must be sent to [racers@dryc.org](mailto:racers@dryc.org) with the subject line to include: boat's sail number retired time of retirement.
- 10.3 A boat failing to notify the RC of its retirement may be banned from entering DRYC races

## 11 REPLACEMENT of EQUIPMENT/SAILS

[DP] Should a boat use a sail with a different number than what is on its entry form, the RC shall be notified via email to [racers@dryc.org](mailto:racers@dryc.org) before 0900 the day of the race. The subject of the email shall be: "SAIL # CHANGE" and the email shall include: 1) Sail Number on entry 2) Boat name, 3) Sail number that will be used in the race. Scoring errors caused by a failure to notify the RC of a sail number change will not be grounds for redress.

## 12 RISK STATEMENT

RRS 3 states: "The responsibility for a boat's decision to participate in a race or to continue to race is hers alone." By participating in this event each competitor agrees and acknowledges that sailing is a potentially dangerous activity with inherent risks. These risks include strong winds and rough seas, sudden changes in weather, failure of equipment, boat handling errors, poor seamanship by other boats, loss of balance on an unstable platform and fatigue resulting in increased risk of injury. Inherent in the sport of sailing is the risk of permanent, catastrophic injury or death by drowning, trauma, hypothermia or other causes.

## 13 CONTACT INFORMATION

DRYC Event Chair: Brendan Huffman [racers@dryc.org](mailto:racers@dryc.org)  
PRO: Harlan Holmes [racers@dryc.org](mailto:racers@dryc.org)  
DRYC office: (310) 823-4664