



**Pensacola Yacht Club  
Notice of Race  
Santa Claus Regatta  
Saturday, December 10, 2022**



**1. RULES**

- 1.1 This regatta shall be governed by rules as defined in the Racing Rules of Sailing (RRS) 2021 - 2024.
- 1.2 The race(s) will be sailed under the current Pensacola Bay General Sailing Instructions (PBGSI) available online at: [Pensacola Bay General Sailing Instructions from the PYC Racing Page](#)
- 1.3 Supplemental Sailing Instructions will be available online no later than 1800 on Friday, Dec. 9th.

**2. ELIGIBILITY, ENTRY AND FEE**

- 2.1 Open to all PHRF and One Design boats with a minimum length of 19'.
- 2.2 Online Registration no later than 10:00 am Saturday December 10<sup>th</sup> at <https://www.regattanetwork.com/html/calendar.php#>. Scroll down to the date of the event to find the link to the registration form.
- 2.3 PHRF entries must have a valid PHRF Rating Certificate or accept a temporary, provisional rating as assigned by the RC.
- 2.4 Entry fee for all classes: \$25/Boat.

**3. SCHEDULE**

- |      |  |
|------|--|
| 1000 | Online Registration Closes   |
| 1155 | Warning Signal for Start of Racing   |
| 1500 | Nauti Santa Awards Party at PYC<br>With Heavy Hors D'Oeuvres and Holiday Libations |
| 1700 | Sailors are encouraged to join the PYC Progressive Marina Party.                   |

**4. PRIZES from NAUTI SANTA**

- 4.1 Prizes will be awarded to the top five (5) finishing boats, as follows:
  - a) The skippers will be numbered in reverse order of finish. The fifth place finisher based on corrected time will be Skipper #1, fourth place finisher will be Skipper #2, and so on. Non-Spinnaker boats will be interleaved into the Spinnaker fleet based on corrected time. If the skipper is not present, a crew member from the boat may represent the skipper.
  - b) Skipper #1 picks a prize and opens it, shows it around, models it, demos it, etc.
  - c) Skipper #2 is next and can either select another unchosen prize or take the prize #1 had chosen.
  - d) If #2 takes #1's prize, #1 must select another unchosen or unopened prize.
  - e) Next, it is #3's turn. #3 has two choices. #3 could select a new unchosen prize or take an already chosen prize (#1's prize or #2's prize).
  - f) Then, if #3 were to select #2's prize, #2 has two choices. #2 could select another unchosen prize or select #1's prize. However, a prize cannot bounce back and forth between two players without someone else taking possession of the prize in between. So, #2 cannot select #3's prize because it was just previously taken from #2.
  - g) **Prizes are retired after being stolen twice and cannot be subsequently selected by another skipper.**

**FOR ADDITIONAL INFORMATION CONTACT:**

**PYC Fleet Captain:**

Hal Smith: [hal\\_smith@mindspring.com](mailto:hal_smith@mindspring.com)

**PRO:**


John Domagala: [john@domagala.us](mailto:john@domagala.us)


**Race Committee Chair:**


Chase Munro: [chase.munro@gmail.com](mailto:chase.munro@gmail.com)





# Attachment C HARBOUR RACE


 <b>COURSE #3 (North Long)</b>		
	Rounded to	Distance
Marks	Signal Vessel	
START		
A	Starboard	1.75
C	Starboard	1.91
H	Port	1.96
K	Starboard	2.10
I	Port	1.73
C	Port	2.33
FINISH	Signal Vessel	2.75
<b>TOTAL DISTANCE</b>		<b>14.53</b>

 <b>COURSE #4 (North Short)</b>		
	Rounded to	Distance
Marks	Signal Vessel	
START		
A	Starboard	1.75
D	Starboard	1.08
I	Port	1.50
J	Port	0.81
I	Port	0.81
D	Port	1.50
FINISH	Signal Vessel	2.25
<b>TOTAL DISTANCE</b>		<b>9.70</b>

 <b>COURSE #5 (South Long)</b>		
	Rounded to	Distance
Marks	Signal Vessel	
START		
K	Port	2.60
M	Starboard	3.88
P	Starboard	4.62
J	Port	1.90
FINISH	Signal Vessel	1.25
<b>TOTAL DISTANCE</b>		<b>14.25</b>


 <b>COURSE #6 (South Short)</b>		
	Rounded to	Distance
Marks	Signal Vessel	
START		
K	Port	2.60
N	Starboard	0.82
R	Starboard	2.44
J	Port	2.76
FINISH	Signal Vessel	1.25
<b>TOTAL DISTANCE</b>		<b>9.87</b>

 <b>COURSE #7 (East Long)</b>		
	Rounded to	Distance
Marks	Signal Vessel	
START		
L	Port	3.75
M	Starboard	0.83
N	Starboard	3.39
H	Starboard	2.29
D	Port	1.28
J	Starboard	2.30
FINISH	Signal Vessel	1.50
<b>TOTAL DISTANCE</b>		<b>15.34</b>

 <b>COURSE #8 (East Short)</b>		
	Rounded to	Distance
Marks	Signal Vessel	
START		
I	Port	0.75
C	Starboard	2.33
I	Starboard	2.33
K	Starboard	1.73
J	Port	0.93
FINISH	Signal Vessel	1.50
<b>TOTAL DISTANCE</b>		<b>9.57</b>



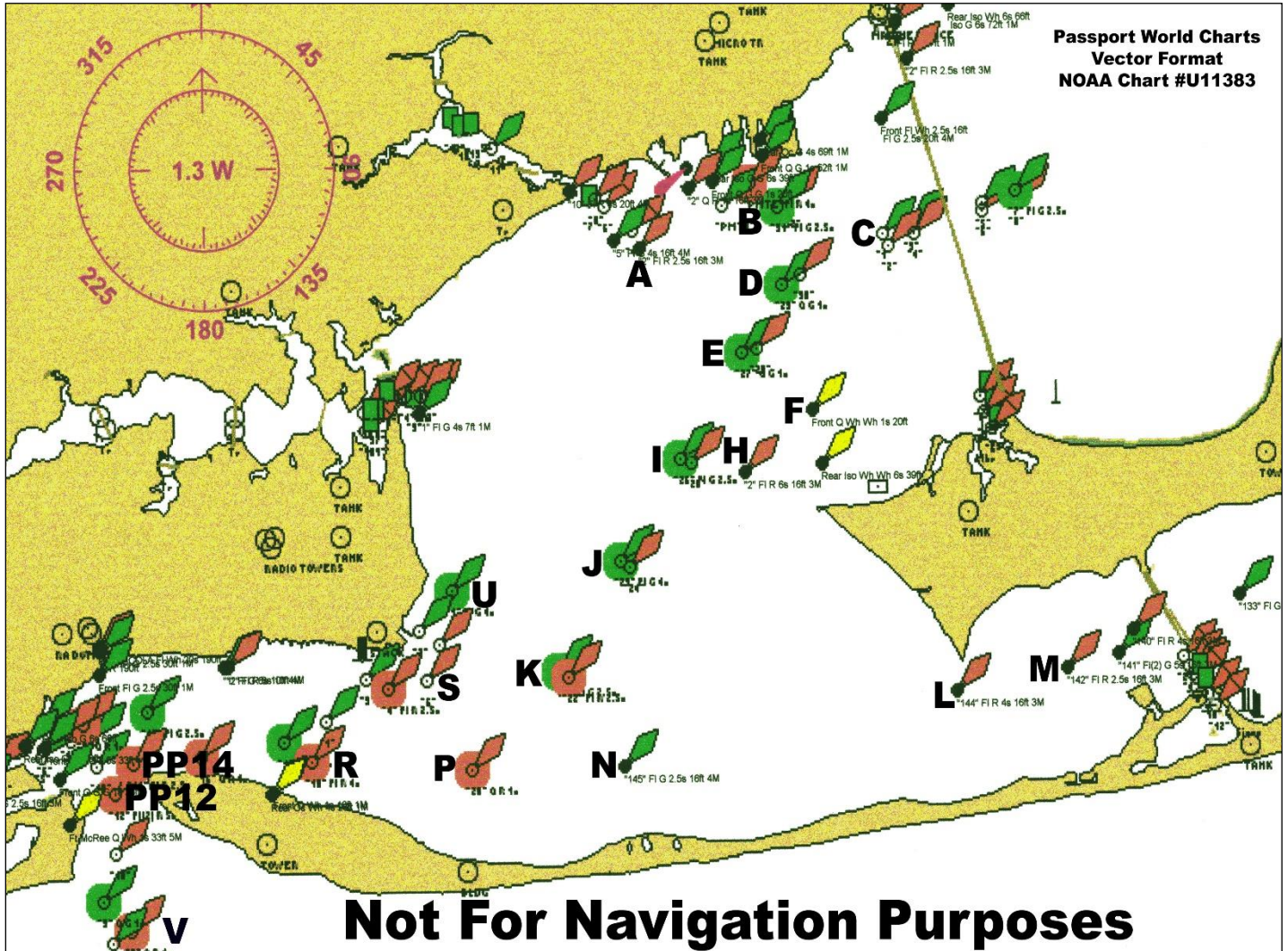
# Attachment C HARBOUR RACE

 Marks	COURSE #1 (Sea Buoy)	
	Rounded to	Distance
START	Signal Vessel	Near entrance to Bayou Chico Channel
S (R6)	Starboard	3.5
PP 14 (R14)	Port	2.25
PP 12 (R12)	Port	0.26
X (G1, Entrance)	Port	3.47
PP 12 (R12)	Starboard	3.47
PP 14 (R14)	Starboard	0.26
S (R6)	Port	2.25
FINISH	Signal Vessel Near A	3.5
	<b>TOTAL DISTANCE</b>	<b>19 nm</b>



# Attachment C HARBOUR RACE

Refer to NOAA Nautical Chart #11378 for details



Mark Letter	Used in Course	Chart Label	Description	Latitude (N)	Longitude (W)
A	3, 4	FI R 2.5s 17ft 3M "2"	Beginning of Bayou Chico Channel	30 ° 23.531 ' E	87 ° 13.729 ' W
B		G "31" FI G 2.5s	Close to Municipal Auditorium	30 ° 23.759 ' E	87 ° 12.574 ' W
C	3, 8	G C "1"	Three Mile Bridge Channel Marker	30 ° 23.557 ' E	87 ° 11.658 ' W
D	4, 7	G "29" Q G	Bay Channel "29"	30 ° 23.211 ' E	87 ° 12.551 ' W
E		G "27" Q G	Bay Channel "27"	30 ° 22.726 ' E	87 ° 12.878 ' W
F		Q 20ft	Forward Range Marker for East Channel	30 ° 22.383 ' E	87 ° 12.233 ' W
G		FI 2.5s 18 ft	Bay Channel Range Marker at NW end 3 Mile Bridge	30 ° 24.357 ' E	87 ° 11.351 ' W
H	3, 7	FI R 6s 17ft 3M "2"	Fair Point	30 ° 21.952 ' E	87 ° 12.819 ' W
I	3, 4, 8	G "25" FI G 2.5s	Bay Channel "25"	30 ° 21.989 ' E	87 ° 13.456 ' W
J	4, 5, 6, 7, 8	G "23" FI G 4s	Bay Channel "23"	30 ° 21.282 ' E	87 ° 13.979 ' W
K	3, 5, 6, 8	G "21" FI G 2.5s	Bay Channel "21"	30 ° 20.509 ' E	87 ° 14.537 ' W
L	7	FI R 4s 17 ft 3M "144"	Deer Point	30 ° 20.397 ' E	87 ° 10.947 ' W
M	5, 7	FI R 2.5s 17ft 3M "142"	Between Deer Point and Pensacola Beach Bridge	30 ° 20.549 ' E	87 ° 10.013 ' W
N	6, 7	FI G 2.5s 17ft 4M "145"	Pensacola Bay off Santa Rosa Island	30 ° 19.893 ' E	87 ° 13.891 ' W
P	5	R "20" FI R 4s BELL	Pensacola Bay off Santa Rosa Island	30 ° 19.821 ' E	87 ° 15.305 ' W
R	6	R "18" FI R 4s	Pensacola Bay off Santa Rosa Island	30 ° 19.888 ' E	87 ° 16.692 ' W
S		R N "6"	Turning Basin East of Naval Air Station Dock	30 ° 20.450 ' E	87 ° 15.719 ' W
U		FI G 4s "1"	Approx. 0.6 nm northeast of Naval Air Station Docks	30 ° 21.075 ' E	87 ° 15.460 ' W
V		R "8" Q R BELL	Caucus Channel (gulf entry channel) Buoy 8	30 ° 18.715 ' E	87 ° 18.300 ' W
X		G "1" FI G 2.5 s GONG	Pensacola Pass Sea Buoy	30 ° 16.262 ' E	87 ° 17.546 ' W
PP12		R "12" FI (2) R 5s	Pensacola Pass "12"	30 ° 19.685 ' E	87 ° 18.417 ' W
PP14		R "14" FI R 2.5s	Pensacola Pass "14"	30 ° 19.891 ' E	87 ° 18.280 ' W

The above positions are approximate. While every care has been taken in the preparation of the above list, no Request for Redress and/or liability can be accepted for any loss or damage arising from any error or inaccuracy. Lat/Long data source NOAA ENC#11383, 07AUG03 update.

These marks and characteristics contained herein were current 2/06/03. "The Notice to Mariners" should be referred to as any of these marks could be subject to change in approximate position and characteristics. The individual Race Committees shall endeavor to note and post any changes that may affect this table. **Ultimately, it is the responsibility of the competitors to navigate the given course properly.**