

66th NORTH CAROLINA GOVERNOR'S CUP REGATTA

June 16-18, 2023

Carolina Sailing Club

Henderson Point Recreation Area, North Carolina

SAILING INSTRUCTIONS

1 RULES

1.1 The event is governed by the rules as defined in *The Racing Rules of Sailing*.

2 CHANGES TO SAILING INSTRUCTIONS

2.1 Any change to the sailing instructions will be posted immediately following the competitors' meeting on Saturday and before 0830 on Sunday, except that any change to the schedule of races will be posted by 2000 on the day before it will take effect.

2.2 Changes to the sailing instructions may be made on the water. Race Committee will display Race Signal L and all boats shall come within hail. Notification of the changes will be given to, and acknowledgement received from, each boat.

3 COMMUNICATIONS WITH COMPETITORS

3.1 Notices to competitors will be posted on the Official Notice Board located by the flagpole outside the front of the Glass House.

4 SIGNALS MADE ASHORE

4.1 Signals made ashore will be displayed from the flagpole at the Glass House.

4.2 When flag AP is displayed ashore, '1 minute' is replaced with 'not less than 30 minutes' in Race Signals AP.

5 SCHEDULE OF RACES

5.1 The scheduled time of the warning signal for the first race each day is shown in the table below.

Saturday, June 18	Competitors' Meeting	1030
	1 st Warning for Race #1 Subsequent races to follow.	1230
Sunday, June 19	1 st Warning for 1 st race on Sunday Subsequent races to follow. No warning signal after 1300.	1000

5.2 Five races are scheduled. Any number of races may be sailed each day.

5.3 Signal flag A displayed with no sound while boats are finishing means "No more racing today."

6 CLASS FLAGS

6.1 The class flags will be announced at the competitors' meetings and posted on the Official Notice Board.

6.2 The order of class starts is at the discretion of the Principal Race Officer. Class starts may be combined.

7 RACING AREA

7.1 Racing is on Kerr Lake off Henderson Point as depicted in Attachment 1.

8 COURSES

8.1 The diagram(s) in Attachment 2 show(s) the course(s), including the approximate angles between legs, the order in which marks are to be passed, and the side on which each mark is to be left. The course length will be based on the sailing conditions.

8.2 No later than the warning signal, the course will be displayed from the rear of the Race Committee signal vessel.

9 MARKS

9.1 Mark 1 (windward mark) is an orange tetrahedron. Mark 2 (windward mark) is a yellow tetrahedron.

9.2 Marks 1a and 2a (windward offset) are small red tetrahedrons.

9.3 Mark 3 (leeward mark) is an orange tetrahedron.

9.4 The starting marks are white cylinders.

9.5 The finishing mark on the NORTH COURSE is a red cylinder and on the SOUTH COURSE a white cylinder.

10 THE START

10.1 The starting line will be between a staff displaying an orange flag on the Race Committee signal vessel at the starboard and a starting mark at the port end.

10.2 [DP] Boats whose warning signal has not been made shall avoid the starting area during the starting sequence for other races.

10.3 A boat that does not start within 5 minutes after her starting signal will be scored Did Not Start (DNS) without a hearing. This changes RRS A5.1 and A5.2.

11 THE FINISH

11.1 NORTH COURSE - The finishing line will be between a staff displaying a blue flag on the Race Committee finish vessel at the leeward end of the line and the course side of the windward end finishing mark.

11.2 SOUTH COURSE - The finishing line will be between a staff displaying a blue flag on the Race Committee vessel at the starboard end of the line and the course side of the finishing mark.

12 PENALTY SYSTEM

12.1 Appendix V1 applies.

13 TIME LIMITS

13.1 If no boat in a class has rounded the windward mark 30 minutes after the starting signal, that class's race is abandoned.

13.2 The time limit for the first boat of a class to sail the course and finish is 120 minutes. If no boat meets the time limit, the race will be abandoned.

13.3 Race committee may finish in place boats who are still racing but not finished, provided their finish position can be determined in a reasonable manner.

14 HEARING REQUESTS

14.1 For each class, the protest time limit is 30 minutes after the Race Committee signal vessel for the appropriate course docks and sounds a horn signal following the last race of the day. The time limit for both the North and South Courses will be posted on the Official Notice Board.

14.2 Request for Hearing forms will be available at the Official Notice Board.

14.3 Request for Hearing forms will be collected by a Jury Representative at the Official Notice Board.

14.4 Notices will be posted on the Official Notice Board no later than 15 minutes after the protest time limit to inform competitors of hearings in which they are parties or named as witnesses. Hearings will be held in the Glass House.

15 SAFETY REGULATIONS

15.1 A Personal Floatation Device is required to be worn by all junior sailors (under age 21) on the docks and on the water at all times. This adds to RRS 1.2.

15.2 [DP] Prior to the first warning signal of each day, each boat shall sail by the stern of the Race Committee signal vessel and hail her sail number until acknowledged by the Race Committee by repeating the boat's sail number.

15.3 [DP] Substitution of competitors or changes of sail numbers shall be reported to the appropriate course Race Committee.

15.4 [DP] A boat that retires from a race or leaves the course before racing for the day is completed shall notify a race committee vessel as soon as possible.

15.5 North Course Race Committee and the Coast Guard Auxiliary may be hailed on VHF 72 in response to a safety issue. South Course Race Committee and the Coast Guard Auxiliary may be hailed on VHF 68 in response to a safety issue.

16 OFFICIAL VESSELS

16.1 The Race Committee signal, finish, and mark vessels will display a RC flag.

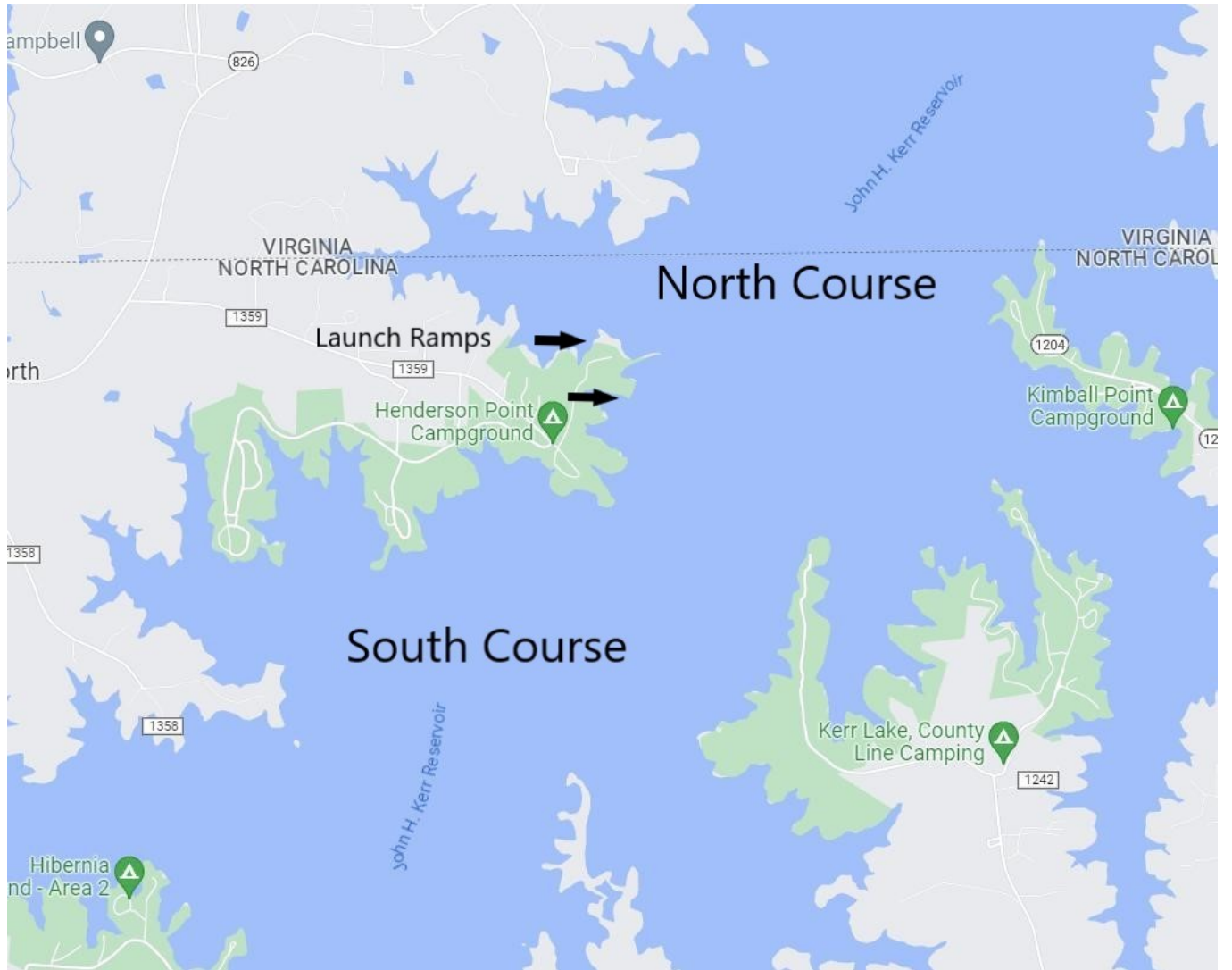
17 TRASH DISPOSAL

17.1 Trash may be placed aboard official vessels.

18 RISK STATEMENT

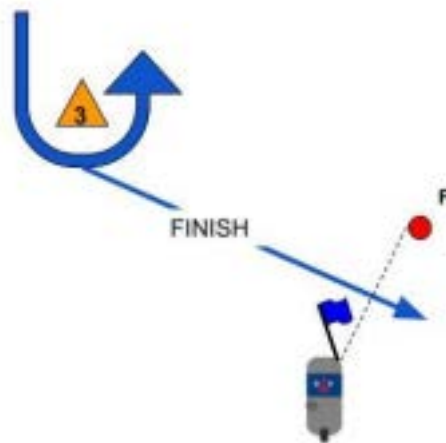
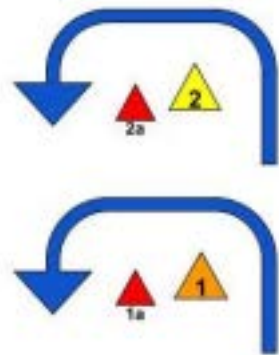
18.1 30.1 RRS 3 states: 'The responsibility for a boat's decision to participate in a race or to continue to race is hers alone.' By participating in this event each competitor agrees and acknowledges that sailing is a potentially dangerous activity with inherent risks. These risks include strong winds and rough seas, sudden changes in weather, failure of equipment, boat handling errors, poor seamanship by other boats, loss of balance on an unstable platform and fatigue resulting in increased risk of injury. **Inherent in the sport of sailing is the risk of permanent, catastrophic injury or death by drowning, trauma, hypothermia or other causes.**

Attachment 1



Attachment 2

North Course



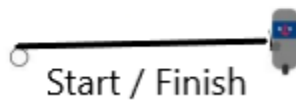
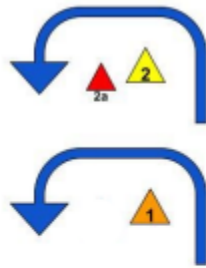
Course	Mark Rounding Order (all rounding marks left to port)
WDR	Start – 1 or 2 – 1a or 2a – 3 – 1 or 2 – 1a or 2a – 3 - Finish
WDR2	Start – 1 or 2 – 1a or 2a – 3 – 1 or 2 – 1a or 2a – 3 – 1 or 2 – 1a or 2a – 3 – Finish

The following classes will round Windward Mark 2 (Yellow Tetrahedron):
Thistle, Flying Scot, Buccaneer, Wayfarer.

The following classes will round Windward Mark 1 (Orange Tetrahedron):
Vanguard 15, ILCA 7.

Attachment 2

South Course



Course	Mark Rounding Order (all rounding marks left to port)
WDR	Start – 1 or 2 – 2a – 3 – 1 or 2 – 2a – Finish
WDR2	Start – 1 or 2 – 2a – 3 – 1 or 2 – 2a – 3 – 1 or 2 – 2a – Finish

The following classes will round Windward Mark 2 (Yellow Tetrahedron):
Weta, Isotope, Open Multi-Hull.

The following classes will round Windward Mark 1 (Orange Tetrahedron):
Open Mono-Hull. NOTE: there is no offset mark for Windward Mark 1.