



# 2023 WINDJAMMER REGATTA

Venice Yacht Club & Venice Sailing Squadron



January 28 & 29, 2023

An SBYA “Boat of The Year” Event

## Sailing Instructions (includes Amendment #1)

1. **RULES:** The regatta shall be governed by the 2021-2024 US Sailing Racing Rules of Sailing (RRS); the current Class Rules of West Florida PHRF (WFPHRF); The Sarasota Bay Yachting Association (SBYA) “Boat of the Year” Notice of Series; this Notice of Race and the Sailing Instructions. In the event of a conflict, the Sailing Instructions shall prevail (this changes RRS 63.7). This event will be a WFPHRF Category 4 event, and all boats must have a functioning GPS and VHF radio.

Oral changes may be made to the Sailing Instructions on the water by the race committee. The race committee will make any changes by VHF transmission to all boats.

2. **NOTICES TO COMPETITORS:** Notices to competitors will be posted on the official notice board at the Venice Yacht Club (VYC) and on the event website on Regatta Network. (<https://www.regattanetwork.com/event/25563>).
3. **CHANGES TO SAILING INSTRUCTIONS:** Changes to the sailing instructions will be posted before 8:00 am on the day they will take effect, except that any change to the schedule of races will be posted by 8:00 pm on the day before it will take effect.
4. **SIGNALS MADE ASHORE:** There will be no signals made ashore.
5. **SCHEDULE OF RACES:** The dates and times of racing are as follows:

Saturday January 28, 2023 (Longboat Key inlet to Venice Inlet): The warning signal for the first class or division to start will be at 10:30 am.

Sunday January 29, 2023 (buoy races off Venice Inlet): The warning signal for the first class or division to start will be at 9:30am. Up to two races may be conducted. No starts will take place after 12:00pm.

6. **CLASSES, DIVISIONS AND FLAGS:** Boats may be assigned to divisions by the organizing authority. Division assignments shall not be cause for redress.

The Class Flags for the starts will be as follows. Boats need not fly their class flag.

Multi	GREEN FLAG
Cruiser	YELLOW FLAG
Pocket Cruiser <u>and</u> Non-spinnaker	PURPLE FLAG

7. **RACING AREAS:**

Saturday January 28, 2023 (Longboat Key inlet to Venice Inlet): The racing area will be on the Gulf between Longboat Key inlet and Venice Inlet.

Sunday, January 29, 2023 (buoy races off Venice inlet): The racing area will be approximately 2 nm west of the Venice inlet.

8. **COURSES:** The course descriptions for the Saturday, January 28 and Sunday, January 29 races are included in attachments A and B respectively.

For Saturday, 28 January 2023: The course will be from the starting line in the vicinity of the Long Boat Key Inlet Safe Water Mark "A" to the finishing line approximately 0.5nm west of Venice Inlet.

For Sunday, January 29, 2023: The courses will consist of buoy races off the Venice Inlet. The PRO will select the specific course to be sailed for each race. The course name will be posted on the RC boat and the PRO will announce over VHF the specific location of the RC boat and the course to be sailed approximately 30 minutes before the start of the first race. The course selection by the PRO and/or failure by a boat to copy the VHF transmission shall not be cause for redress.

9. **MARKS:** The marks for the course will be orange inflatable or yellow floating marks. The approximate GPS coordinates of the marks is included in Attachments A and B.

The race committee vessel may have a floating mark tied behind her stern. The vessel itself, that mark, and the space between that mark and the vessel shall collectively be the race committee vessel.

In the event a mark is missing at its designated position, including the start mark, finishing mark, and race committee vessel, the race committee is to be informed via VHF immediately and the missing mark's designated GPS coordinates shall be used as a virtual mark. If the missing mark is a start or finishing mark, the corresponding line shall be a line perpendicular to the last leg of the course. If the race committee vessel is not present, boats shall record their time of crossing and report it to the race committee as soon as possible after finishing by emailing the race committee at [racing@venicesailingsquadron.org](mailto:racing@venicesailingsquadron.org). This amends the definition of "mark" in the Rules.

For the Saturday race to Venice ONLY: The race committee has also defined a series of virtual marks by GPS positions. The virtual marks are marks of the course located on the rhumb-line to Venice. They may be left on either side. Their purpose is to allow the Race Committee to shorten the course, in which case a finishing mark and the race committee vessel will be repositioned to the location of the virtual mark to become the Finishing Line.

10. **CHECK-IN PROCEDURES:** No later than ten minutes before the first warning signal on both racing days, boats must check-in with the race committee either by passing close to the stern of the race committee vessel and hailing their name and sail number, or via VHF. (DP)

11. **START:** For both racing days, the starting line will be between a staff displaying an orange flag on the race committee vessel and the course side of the starting mark.

The race committee vessel may attempt to hail premature starters either audibly or by VHF. Failure to hail, the order or timing of the hail, or the failure to hear the hail shall not be grounds for redress.

Boats in classes or divisions not scheduled to start (within five minutes of their starting time) shall avoid the starting area. (DP)

12. **FINISH:** For both racing days, the finishing line will be between a staff displaying an orange flag on the race committee vessel and the course side of the finishing mark.

13. **TIME LIMITS:** Time limits are as follows:

For Saturday, 28 January 2023: Boats must finish before 5pm. Boats failing to finish before 5pm shall be scored Did Not Finish without a hearing. This changes RRS 35.

For Sunday, 29 January 2023: Boats failing to finish within 30 minutes after the first boat in their class or division sails the course and finishes shall be scored Did Not Finish without a hearing. This changes RRS 35.

14. **PENALTY SYSTEM:** RRS Rule 44.3 (Scoring Penalty) shall not apply.

15. **PROTESTS AND REQUESTS FOR REDRESS:** Boats intending to file a hearing request shall inform the race committee on VHF immediately after finishing the relevant race.

Hearing requests shall be delivered to the race committee via email at [racing@venicesailingsquadron.org](mailto:racing@venicesailingsquadron.org) within two hours of the last boat finishing racing for the day. Hearings will be scheduled as soon as practicable.

16. **RADIO COMMUNICATIONS:** The race committee will use VHF channel 69 for all communications with boats. If the communication channel is unusable for any reason, the race committee will designate an alternate channel on channel 16.

A boat that retires from a race shall notify the race committee via VHF as soon as possible and advise their intentions. (DP)

Except in an emergency, a boat that is racing shall not make voice or data transmissions and shall not receive voice or data communication that is not available to all boats. (DP)

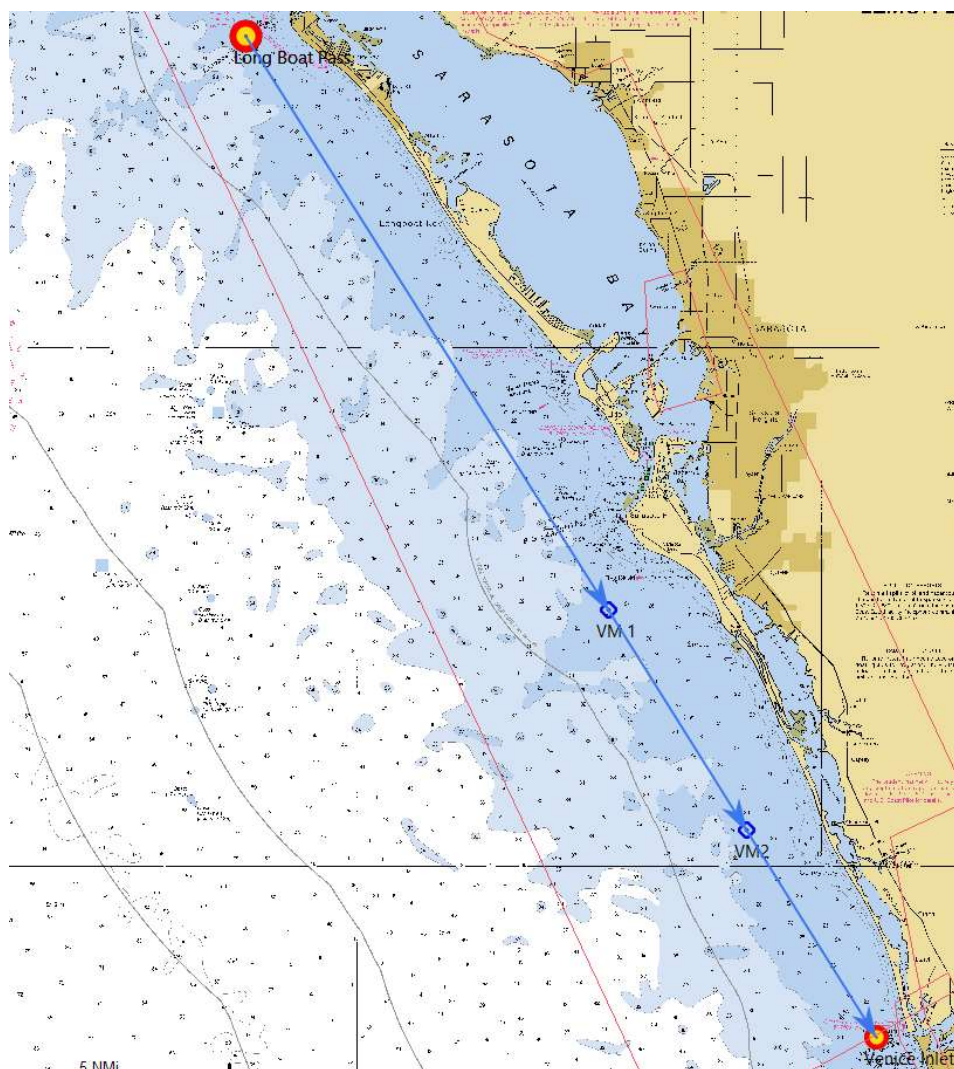
**(DP)** The notation (DP) in a rule in the Sailing Instructions means that the penalty for a breach of this rule may, at the discretion of the protest committee, be less than disqualification.

## ATTACHMENT A: COURSE FOR SATURDAY, 28 JANUARY 2023

### Course: Start – Virtual Mark 1 – Virtual Mark 2 – Finish

Virtual marks are rounding marks of the course and may be passed on either side.

### Course overview – NOT FOR NAVIGATION



### Approximate mark coordinates:

Mark name	Position (N)	Position (W)	Distance from start (nm)
Start	27 deg 26.0 min N	82 deg 42.4 min W	0.0
Virtual Mark 1	27 deg 15.0 min N	82 deg 34.6 min W	13.0
Virtual Mark 2	27 deg 10.7 min N	82 deg 31.6 min W	18.1
Finish	27 deg 06.7 min N	82 deg 28.8 min W	22.8

## ATTACHMENT B: COURSES FOR SUNDAY, 28 JANUARY 2023

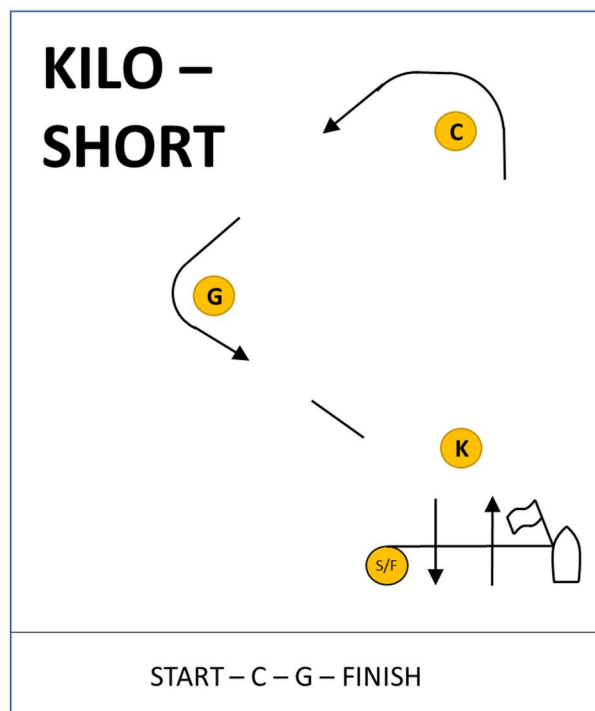
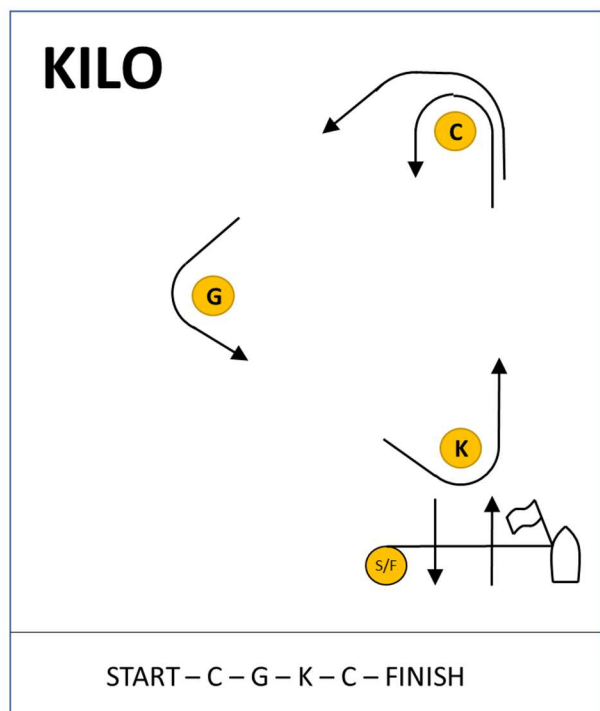
### Courses (7.50 nm)

Course name	Mark sequence	Start	Heading deg T	Next mark	Heading deg T	Next mark	Heading deg T	Next mark	Heading deg T	Next mark	Heading deg T	Finish
ALPHA	SF E I A E SF	SF	300	E	180	I	60	A	300	E	120	SF
BRAVO	SF F J B F SF	SF	270	F	150	J	30	B	270	F	90	SF
CHARLIE	SF G K C G SF	SF	240	G	120	K	0	C	240	G	60	SF
DELTA	SF H L D H SF	SF	210	H	90	L	330	D	210	H	30	SF
ECHO	SF I A E I SF	SF	180	I	60	A	300	E	180	I	0	SF
FOXTROT	SF J B F J SF	SF	150	J	30	B	270	F	150	J	330	SF
GOLF	SF K C G K SF	SF	120	K	0	C	240	G	120	K	300	SF
HOTEL	SF L D H L SF	SF	90	L	330	D	210	H	90	L	270	SF
INDIA	SF A E I A SF	SF	60	A	300	E	180	I	60	A	240	SF
JULIET	SF B F J B SF	SF	30	B	270	F	150	J	30	B	210	SF
KILO	SF C G K C SF	SF	0	C	240	G	120	K	0	C	180	SF
LIMA	SF D H L D SF	SF	330	D	210	H	90	L	330	D	150	SF

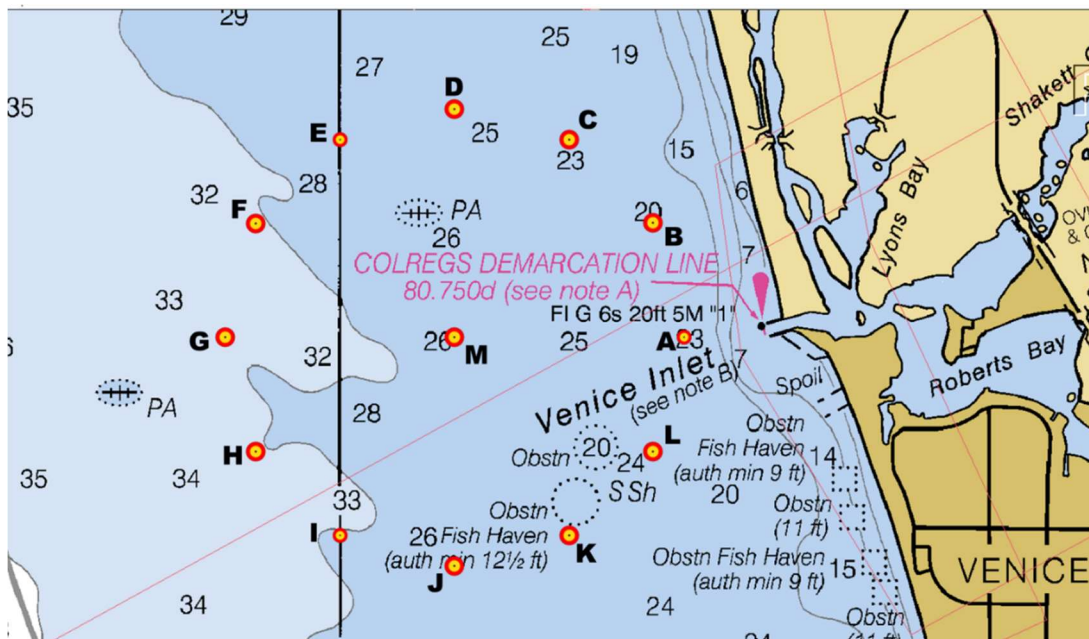
#### Notes:

- (1) The first mark in the mark sequence is the Starting Mark.
- (2) The last mark in the sequence is the Finishing Mark.
- (3) All marks are to be left to Port.
- (4) In the event the short course (three legs, 4.50nm) is used:
  - The designation will be "Course name - SHORT" (e.g., KILO-SHORT)
  - The last two legs are not part of the course.
  - The Finishing mark will be same as the Starting Mark

#### Sample courses



**Mark Locations diagram - NOT FOR NAVIGATION**



**Approximate GPS coordinates of marks**

Mark Name	North		West	
	Degrees	Minutes	Degrees	Minutes
A	27	6.720	82	28.540
B	27	7.153	82	28.670
C	27	7.470	82	29.026
D	27	7.586	82	29.513
E	27	7.470	82	29.999
F	27	7.153	82	30.356
G	27	6.720	82	30.486
H	27	6.287	82	30.356
I	27	5.970	82	29.999
J	27	5.854	82	29.513
K	27	5.970	82	29.026
L	27	6.287	82	28.670
M	27	6.720	82	29.513