



RANDOM LEG SAILING INSTRUCTIONS

SCYA 93rd Midwinter Regatta

Saturday, ~~March 4~~ and Sunday, ~~February 25~~ and 26, 2023

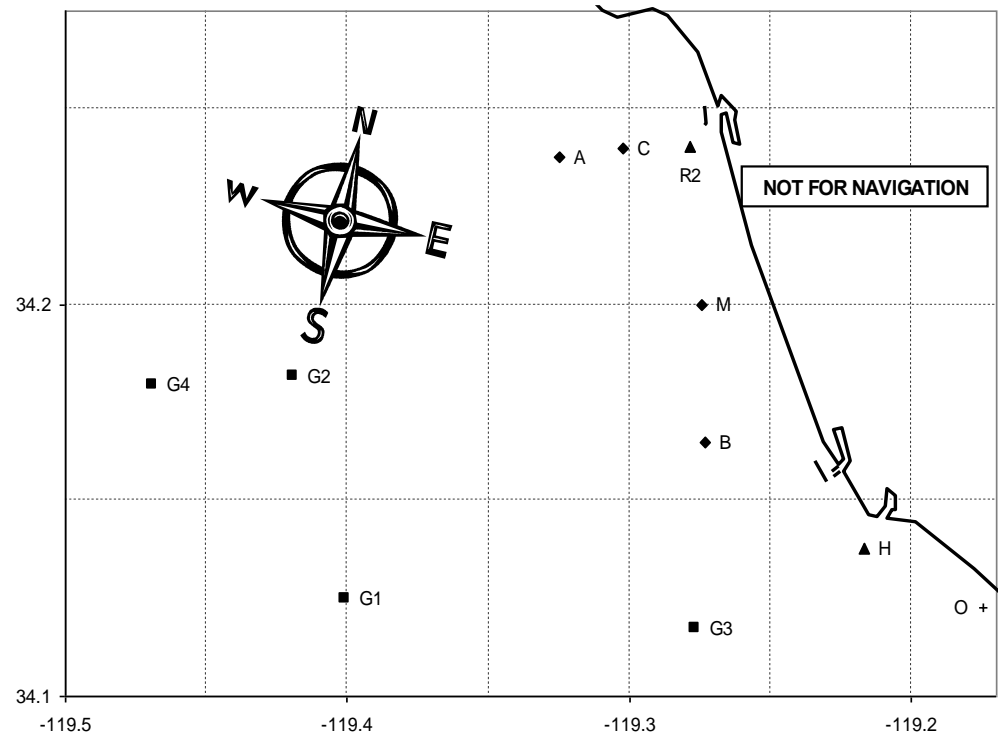
Organizing Authorities: Southern California Yachting Association and Channel Islands Yacht Club

4100 Harbor Blvd, Oxnard, CA 93035 (805) 985-2492

1. **RULES** - The Regatta will be governed by the rules as defined in *The Racing Rules of Sailing (RRS)*. Written changes to the Sailing Instructions will be posted online by 0930 on the day of the event at <https://www.regattanetwork.com/event/25583>. On the water, changes to a sailing instruction may only be made by hailing all competitors on VHF Channel 68 and/or displaying Signal Flag L, informing them of the change, and receiving confirmation from each competitor that they have heard and understood the change.
2. **SCHEDULE OF RACES** – Each day the first start for the Random Leg Fleet is planned for **1100**. (This precedes the first start for the Windward/Leeward Fleet at 1115 in the same area.) At least 1 race is required to complete the regatta for the Random Leg fleet.
3. **CLASS FLAGS** - The following Class Flags will be employed:
 - Pennant #1 – PHRF Spinnaker
 - Pennant #2 – Non Spinnaker
4. **RACING AREA, COURSES, AND MARKS** - The racing area will be the coastal waters of Ventura County, and the courses will be chosen from the CIYC 2023 Random Leg Course Chart, which includes course distances between 4 and 25nm. When an oil platform is a mark of the course, its associated mooring buoys are also marks of the course.
5. **THE START** - Races will be started according to *Rule 26*. The port end of the starting line is the Mandalay spar buoy and the starboard end is an **orange flag** at the stern of the Race Committee (RC) boat. Boats whose warning signal has not been made shall avoid the starting area. Although not required to do so, the RC *may* attempt to hail a boat if it is On Course Side (OCS) at its starting signal. Any boat that suspects it is OCS should exonerate itself without waiting for a recall flag or to be hailed.
6. **THE FINISH** - The finish line will be the reverse of the start line, ie, the Mandalay spar buoy defines the starboard end, and the **orange flag** near the stern of the RC boat defines the port end. If the RC is not present, each finishing boat will approach within 3 boat-lengths shoreside of the Mandalay buoy. The crew will record her finish time at the moment when her bow crosses the line between the Mandalay race buoy and the stack of the Mandalay Power Plant at a bearing of 72°T (59°M) and will relay the time to the PRO as soon as practical after finishing.
7. **SCORING** –Area random leg ratings will be used for PHRF class scoring. Each boat's series score will be the sum of her scores for both races with no throw-outs or exclusions; this modifies *RRS A2.1*.
8. **COMMUNICATIONS** - All boats shall carry a radio capable of transmitting and receiving on **VHF Channels 16 and 68** and shall check in with the RC at the beginning of each race day by VHF or by sailing past the stern of the RC. A boat that retires from a race shall notify the RC as soon as possible by VHF or phone (PRO 415.518.4046).
9. **SAFETY EQUIPMENT** -- Each skipper is responsible for compliance with applicable US Sailing Safety Equipment Requirements for Nearshore
10. **HOSPITALITY AND AWARDS** – Skippers and Crew are invited to CIYC after racing each day for hot food and no-host bar with specialty drinks. ~~Interim Results should be available by 1700 Saturday, February 25,~~ and final Race Awards will be presented at approximately **1700, Saturday, March 4** ~~1800, Sunday, February 26.~~

Channel Islands Yacht Club – 2023 Random Leg Course Chart
Start and Finish: Mandalay Race Buoy

Course	nm	Waypoints (see Codes below)	Approx Bearing to 1 st Mark
1	9.34	Sm Hp Fm	143°T (130°M)
2	10.03	Sm Hs Bs Fm	143°T (130°M)
3	12.80	Sm Hs G3s Fm	143°T (130°M)
4	4.20	Sm Bp Fm	179°T (166°M)
5	10.03	Sm Bp Hp Fm	179°T (166°M)
6	12.80	Sm Bp G3p Hp Fm	179°T (166°M)
7	16.55	Sm Bs G3s As Fm	179°T (166°M)
8	9.90	Sm G3p Fm	181°T (168°M)
9	12.80	Sm G3p Hp Fm	181°T (168°M)
10	18.74	Sm G3s G1s Fm	181°T (168°M)
11	15.33	Sm G1p Fm	234°T (221°M)
12	18.74	Sm G1p G3p Fm	234°T (221°M)
13	21.64	Sm G1p G3p Hp Fm	234°T (221°M)
14	14.40	Sm G2p Fm	261°T (248°M)
15	16.57	Sm G2s As Fm	261°T (248°M)
16	20.15	Sm G2p G3p Fm	261°T (248°M)
17	19.34	Sm G4p Fm	263°T (250°M)
18	22.14	Sm G4p G1p Fm	263°T (250°M)
19	24.92	Sm G4p G3p Fm	263°T (250°M)
20	7.40	Sm Ap Fm	313°T (300°M)
21	11.15	Sm Ap Bp Fm	313°T (300°M)
22	16.55	Sm Ap G3p Fm	313°T (300°M)
23	5.56	Sm Cp Fm	330°T (317°M)
24	9.60	Sm Cp Bp Fm	330°T (317°M)
25	6.41	Sm R2Vp Cp Fm	355°T (342°M)
26	8.66	Sm R2Vp Ap Fm	355°T (342°M)
27	14.76	Sm R2Vp G3p Fm	355°T (342°M)



Code	Marks	Approximate Location
A	Fish Sticks spar buoy	34° 14.5' N 119° 19.8' W
B	Wes Mark spar buoy	34° 09.9' N 119° 16.4' W
C	Chips spar buoy	34° 14.4' N 119° 18.2' W
H	Hueneme buoy	34° 08.3' N 119° 13.0' W
Sm/Fm	Mandalay spar buoy	34° 12.0' N 119° 16.5' W
R2	Ventura R2 whistle buoy	34° 14.4' N 119° 16.7' W
G1	Platform Gail	34° 07.5' N 119° 24.0' W
G2	Platform Gilda	34° 10.9' N 119° 25.1' W
G3	Platform Gina	34° 07.0' N 119° 16.6' W
G4	Platform Grace	34° 10.8' N 119° 28.2' W