



# LOS ANGELES YACHT CLUB®

## 2023 Opening Day Race

### NOTICE OF RACE

Saturday, January 28<sup>th</sup>, 2023

The 2023 Opening Day Race will be presented by Los Angeles Yacht Club®. The Organizing Authority (OA) is the Los Angeles Yacht Club® located at 285 Whaler's Walk, San Pedro, California 90731. The LAYC® telephone number is 310-831-1203, and the web address is LAYC.org.

#### 1. Rules.

- 1.1. This series will be governed by the "rules" as defined in The Racing Rules of Sailing (RRS), and the [US Safety Equipment Requirements, \(USSER\)](#), US Nearshore Race level, except as modified by this notice of race and sailing instructions.
- 1.2. RRS 52 is modified to allow the use of winches operated using stored power.
- 1.3. RRS 55 is modified by adding the following sentence to the rule: "However, discarding biodegradable sail stops when setting a sail is permitted."
- 1.4. All competitors are asked to observe USCG Navigational Rule 9, which in part reads "A sailing vessel shall not impede the passage of a vessel which can safely navigate only within a narrow channel or fairway."
- 1.5. Further, USCG Navigational Rule 34, in part reads "...When vessels in sight of one another... is in doubt whether sufficient action is being taken by the other to avoid collision, the vessel in doubt shall immediately indicate such doubt by giving at least five short and rapid blasts on the (horn)." *Any boat participating in an LAYC race that is identified in any complaint from the Coast Guard, Harbor, Pilot or a Commercial Vessel Captain that has warned that participating boat by sounding five horns will be presumed to have infringed this instruction. **RRS 60.2, 63.1 and A5 are modified to add that the Protest Committee may disqualify a yacht infringing this instruction without a hearing.***

2. **Eligibility and Entries.** This race is open to yachts possessing a current Southern California PHRF handicap. The Area C Random Leg rating will apply. Cruising class or Wooden Hull class yachts which possess a SoCal PHRF certificate will use their applicable PHRF rating, Area C, Random Leg. A minimum of four entries will be required to establish a class. Entry fees shall be \$50.00 and all entries must be accompanied by a current PHRF certificate. Entries must be received by 1800 hours **Thursday, January 26<sup>th</sup>, 2023**. Late entries will only be accepted with the approval of the Race Committee Chairman. Late entries will not be considered without a current

PHRF certificate, completed necessary entry forms and entry fees. Entries shall be made by completing an LAYC Race Entry form through Regatta Network.

**Cruising Class.** Entries in the Cruising Class will be allowed for any yacht with a valid PHRF rating. Cruising Class yachts are subject to additional rules as set forth in the Sailing Instructions. A minimum of four entries will be required to establish a Cruising Class.

3. **Schedule of Race.** The warning signal for the first class will be at 1255. Subsequent starts if required will follow the first start.
4. **Racing Area.** The racing area will be in the vicinity of Los Angeles Harbor, with the starting area (*SF1 on course chart 2014 attached*) approximately 1.5 nautical miles NE of the Los Angeles Harbor Entrance inside the middle breakwater area. The finish will also be in the same area SF1.
5. **Sailing Instructions.** The Sailing Instructions will be available by 1000 hours on **Wednesday, January 25<sup>th</sup>, 2023**. All related race documents including Cruising Class Worksheets and Race Entry Forms will also be available on the LAYC website at [www.LAYC.org](http://www.LAYC.org).
6. **Skippers Meeting.** There is no skippers meeting planned.
7. **Scoring.** The Low Point system of Appendix A will apply.
8. **Trophies.** Trophies will be presented as possible after the completion of racing. Take home trophies for the event will be awarded in each class on the following basis: up to 4 entries-1 trophy; 5 to 7 entries, 2 trophies; 8 or more entries, 3 trophies for corrected time finishes.  
Perpetual trophies to be awarded are as follows:
  1. ***The Keating Coffey Flagship Trophy will be awarded to the highest finishing present Commodore or representative Flag Officer who helms the entered boat for at least 75% of the measured distance of the race, including the start, each mark rounding, and the finish. Only those entries indicating “Present Commodore / Flag Officer Driver” on their entry form, or indicating such status to the Race Committee prior to 1150 hrs. on the day of the race will be eligible for the Keating Coffey Flagship Trophy. Boats competing for this trophy will sail the course with the code flag “one” and their yacht club burgee visible on the backstay.***
  2. ***The Craig Trophy will be awarded to the highest LAYC finisher who did not also win the Keating Coffey Flagship Trophy.***
  3. ***The Vanderbilt Trophy will be awarded to the highest non-LAYC finisher who did not also win the Keating Coffey Flagship Trophy.***
9. **Social Events and Hospitality.** The Opening Day Race is sailed on the day prior to the Los Angeles Yacht Club Opening Day ceremonies. All competitors are cordially invited to participate in all the scheduled events. Information about the Opening Day events may be obtained from the LAYC office or the [LAYC club website](#) There will be an awards presentation at the LAYC clubhouse following the conclusion of the race.

The Angels Gate Bar will be open (no host), and complimentary hors d'oeuvres will be served.

**10. Berthing.** Los Angeles Yacht Club can assist with limited berthing. For further information please contact the club office.

**11. Disclaimer of Liability.** Sailing is an activity that has an inherent risk of damage and injury.

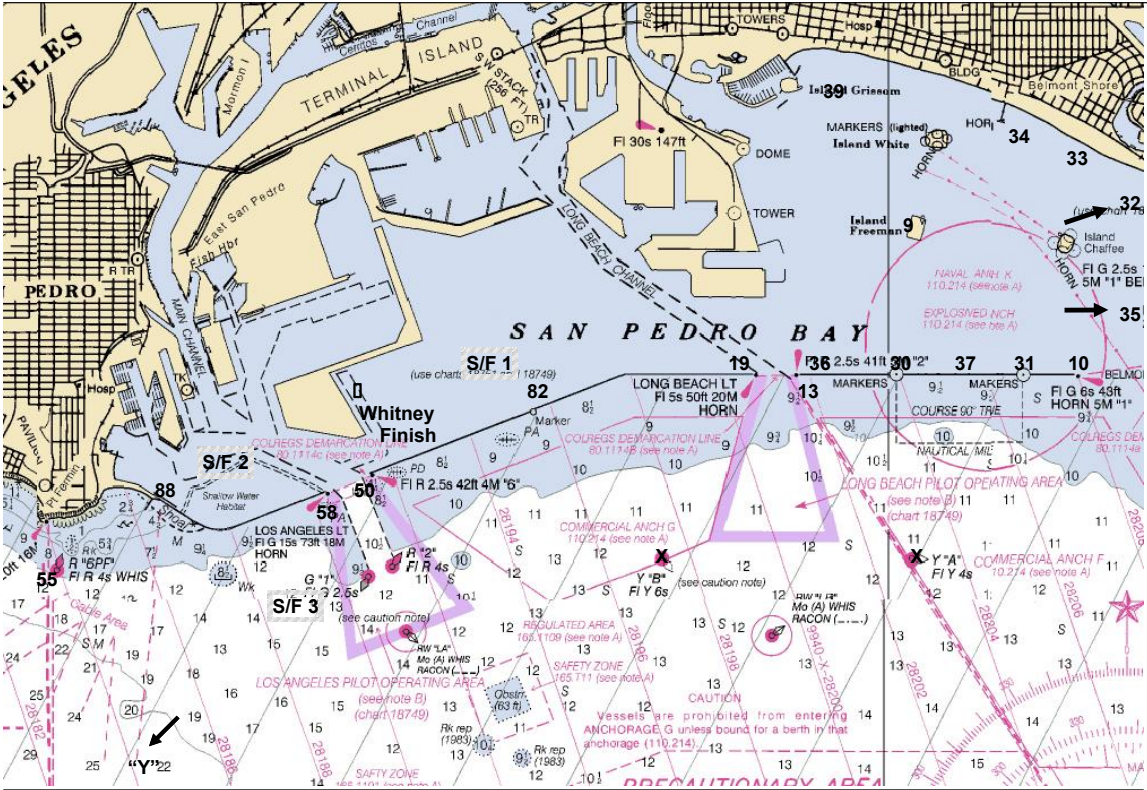
Competitors in this event are participating entirely at their own risk. See RRS 4, Decision to Race. The race organizers (organizing authority, race committee, protest committee, host club, sponsors, or any other organization or official) will not be responsible for damage to any boat or other property or the injury to any competitor, including death, sustained as a result of participation in this event. By participating in this event, each competitor agrees to release the race organizers from any and all liability associated with such competitor's participation in this event to the fullest extent permitted by law.

**Race Committee Chair**, Kenneth Corry  
**PRO**, Tom Trujillo,

714-357-1079  
213-500-3545

Racing@layc.org  
tomtrujillo@me.com

LOS ANGELES YACHT CLUB RACE COURSE CHART  
NO. 2014-1



NOT TO BE USED FOR NAVIGATION

1/20/14

NOR – Opening Day Race  
January 28<sup>th</sup>, 2023

LAYC Courses

For Chart 2014-1

| Course | Mark 1 | Mark 2 | Mark 3 | Mark 4 | Mark 5 | Mark 6 | Mark 7 | Mark 8 | Distance |
|--------|--------|--------|--------|--------|--------|--------|--------|--------|----------|
| 1      | S/F 1  | 50     | 19     | S/F 1  |        |        |        |        | 7.5      |
| 2      | S/F 1  | 19 (S) | 50 (S) | S/F 1  |        |        |        |        | 7.5      |
| 3      | S/F 1  | 55     | S/F 1  |        |        |        |        |        | 8.0      |
| 4      | S/F 1  | 13     | 10     | S/F 1  |        |        |        |        | 8.5      |
| 5      | S/F 1  | 19(S)  | 88(S)  | S/F 1  |        |        |        |        | 9.5      |
| 6      | S/F 1  | 50     | 9      | S/F 1  |        |        |        |        | 10.5     |
| 7      | S/F 1  | 9 (S)  | 50 (S) | S/F 1  |        |        |        |        | 10.5     |
| 8      | S/F 1  | 88     | 82     | 88     | S/F 1  |        |        |        | 11.2     |
| 9      | S/F 1  | 55     | 19     | S/F 1  |        |        |        |        | 11.5     |
| 10     | S/F 1  | 19 (S) | 55     | S/F 1  |        |        |        |        | 11.5     |
| 11     | S/F 1  | 50     | 10     | S/F 1  |        |        |        |        | 11.8     |
| 12     | S/F 1  | 55     | 9      | S/F 1  |        |        |        |        | 14.0     |
| 13     | S/F 1  | 55     | 35     | S/F 1  |        |        |        |        | 18.4     |
| 14     |        |        |        |        |        |        |        |        |          |
| 15     |        |        |        |        |        |        |        |        |          |
| 16     |        |        |        |        |        |        |        |        |          |
| 17     |        |        |        |        |        |        |        |        |          |
| 18     |        |        |        |        |        |        |        |        |          |
| 20     | S/F 2  | 88     | 82     | S/F 2  |        |        |        |        | 5.5      |
| 23     | S/F 2  | 82(S)  | 88(S)  | S/F 2  |        |        |        |        | 5.5      |
| 24     | S/F 2  | 88     | 82     | 88     | S/F 2  |        |        |        | 6.4      |
| 28     | S/F 2  | 88     | 55     | S/F 2  |        |        |        |        | 6.8      |
| 29     | S/F 2  | 88     | 9(S)   | 19(S)  | 58     | S/F 2  |        |        | 12.6     |
| 37     | S/F 3  | 55     | 19     | 9(S)   | 19(S)  | S/F 3  |        |        | 14.5     |

Mark Description & Location

- S/F 1 Approx. 1.5 NM NE of LA Light
- S/F 2 Approx. 1 NM NW of LA Light
- S/F 3 Approx. 1.1 NM SSW of LA Light
- "Y" Traffic Lane Buoy Yellow "092", approx 7.9 NM at 213° from LA Light
- "W" Orange Inflatable Windward of S/F
- "L" Orange Inflatable Leeward of S/F
- 9 Oil Island Freeman
- 10 East End of Long Beach Breakwater
- 13 West End of Long Beach Breakwater
- 19 East End of Middle Breakwater (LB Entrance)
- 30 Yellow Spar, approx 100 yds N of West Measured Mile Marker
- 31 Yellow Spar, approx 100 yds N of East Measured Mile Marker
- 32 Yellow Spar, 1/2 NM NW of West End of the Alamitos Bay Jetty
- 33 Yellow Spar, 1 NM NW of West End of the Alamitos Bay Jetty
- 34 Yellow Spar, 500 yds E from the end of the Belmont Pier
- 35 Yellow Spar, 600 yds W from the end of the Seal Beach Mun. Pier
- 36 Yellow Spar, approx 100 yds N and 1/2 NM W of W Meas. Mile Marker
- 37 Yellow Spar, approx 100 yds N of 1/2 mile Measured Mile Marker
- 39 Yellow Spar, 1/2 NM ENE of Island Grissom
- 50 West End of Middle Breakwater
- 55 Point Fermin Whistle Buoy R "6"
- 58 East End of San Pedro Breakwater (LA Light)
- 82 Yellow Spar, approx. 1.5 NM at 52° from LA Light
- 88 Yellow Spar, approx. 150 yds N of Gr. Channel Buoy #3

All Marks rounded to Port unless specified as (S) to Starboard