



# LOS ANGELES YACHT CLUB®

## 2023 Opening Day Race

### SAILING INSTRUCTIONS

January 28<sup>th</sup>, 2023

The Organizing Authority (OA) is the Los Angeles Yacht Club (LAYC). The Host Club and Race Management will be provided by LAYC. LAYC is located at 285 Whalers Walk, San Pedro, CA 90731. Phone number is (310) 831-1203. Club and Event information are available at [www.LAYC.org](http://www.LAYC.org)

*The SI's statement concerning Covid-19 should be closely observed for this event\**

#### 1. RULES

- 1.1. Appendix J of the 2021-2024 RRS includes a preamble that states the SI need not repeat a rule from the NOR so please **carry copies of both the NOR and SI on board at all times. *This series will be governed as stated in the NOR for this event***
- 1.2. All competitors are asked to observe USCG Navigational Rule 9, which in part reads "A sailing vessel shall not impede the passage of a vessel which can safely navigate only within a narrow channel or fairway.
- 1.3. Further, USCG Navigational Rule 34, in part reads "...When vessels in sight of one another... is in doubt whether sufficient action is being taken by the other to avoid collision, the vessel in doubt shall immediately indicate such doubt by giving at least five short and rapid blasts on the (horn)." Any boat participating in an LAYC race that is identified in any complaint from the Coast Guard, Harbor Pilot, or a Commercial Vessel Captain that has warned that participating boat by sounding five horns will be presumed to have infringed this instruction. RRS 60.2, 63.1 and A5 are modified to add that the Protest Committee may disqualify a yacht infringing this instruction without a hearing.
- 1.4. US Sailing Prescriptions to RRS 63.2 and 63.4 are NOT in effect

#### 2. ELIGIBILITY

- 2.1. Eligibility for this series is stated in detail in the NOR.

#### 3. ENTRY

- 3.1. Entry forms will only be available online at [www.layc.org](http://www.layc.org)
- 3.2. PLEASE UPLOAD CURRENT PHRF CERTIFICATE WHEN REGISTERING, or email to [kpcnut@aol.com](mailto:kpcnut@aol.com) or [tomtrujillo@me.com](mailto:tomtrujillo@me.com)

**3.3.** *Class breaks will be posted online by 1800 Friday, January 27<sup>th</sup>, 2023.*

**4. Changes To Sailing Instructions**

**4.1.** Changes to Sailing Instructions, any change to the sailing instructions will be posted before 1000 hours on the day of the race.

**5. Signals Made Ashore**

**5.1.** *There will be no Skipper's Meeting, please monitor VHF 71 prior to your start.*

**5.2.** Signals made ashore will be displayed at the Club's Flagstaff, located just north of the Clubhouse.

**6. Schedule and Class Flags**

**6.1.** The warning signal for the first class will be at 1255 hours.

**7. Class Flags**

**7.1.** SPECIAL CLASS FLAG. (Keating Coffey Flagship Trophy) Boats competing for the Keating Coffey Flagship Trophy shall sail the course with the code flag "one" and their yacht club burgee visible on the backstay, to indicate a Present Commodore or Flag Officer driver. To be eligible for the Keating Coffey Flagship Trophy, the representative current Commodore or Flag Officer must be at the helm at least 75% of the measured distance of the race, including the start, each mark rounding and the finish.

**8. Racing Area**

**8.1.** The racing area will be in the vicinity of Los Angeles Harbor

**8.2.** The starting and finishing area will be approximately 1.5 nautical miles Northeast of the Los Angeles Harbor Entrance, in the vicinity of S/F 1, LAYC Course Chart 2014-1 (see below)

**9. Courses and Marks**

**9.1.** Courses will be selected from those listed on LAYC Course Chart 2014-1 available at LAYC. Additional courses may be passed out from the RC boat on station and will also be available at LAYC prior to 1000 on Saturday, Saturday, January 28<sup>th</sup>, 2023. The selected course will be displayed using number boards on the starting Race Committee boat.

**10. Starting and Finishing Lines**

**10.1.** The starting line will be between a staff supporting an orange flag on the Race Committee boat and the course side of the starting mark. There may be a limiting buoy to protect the Race Committee boat. No yacht shall sail between this limiting buoy and the Race Committee boat.



**10.2.** The classes will start in the following order:

Start Number	Class	Class Flag
1	PHRF A	"A"
2	PHRF B	"B"
3	Cruising	"1"

**10.3.** To draw attention that the race starting sequence is about to begin, multiple sound signals will be made approximately one minute before the first warning signal.

**10.4.** The finish line will be between a staff supporting a blue flag on the Race Committee boat and the course side of finishing mark.

## **11. Time Limit**

**11.1.** Boats finishing after 1630 hours shall be scored DNF. This changes RRS 35.

## **12. Protests**

**12.1.** Protests shall be written on forms available at the Los Angeles Yacht Club front desk and filed there within one hour after the time the Race Committee boat docks. The close of Protest Time shall be displayed at the front desk as soon as possible.

**12.2.** The Protest Committee will hear protests as soon as practical in approximately the order of receipt.

## **13. Scoring**

**13.1.** The low point system of RRS Appendix A will apply.

## **14. Check in and Retirement**

**14.1.** When the Race Committee boat is anchored on station and code flag L is displayed, each boat shall pass the stern of the race committee boat and hail her sail number, which will be acknowledged.

**14.2.** A boat that retires from a race shall notify the Race Committee by hailing or by VHF Channel 71 before leaving the race area.

## **15. Radio Communications**

**15.1.** The Race Committee intends to monitor VHF Channel 71. Skippers are REQUIRED to have a VHF radio capable of receiving and transmitting on this channel.

**15.2.** The Race Committee may use VHF 71 to broadcast information such as the location of the Race Committee boat, sail numbers of yachts recalled, etc. Failure to receive or hear such radio transmission will not be grounds for redress.

**15.3.** As a courtesy, the Race Committee will attempt to notify recalled boats by hailing their sail number over VHF channel 71. Failure of a boat to see or hear her recall



notification shall not relieve her of her obligation to start correctly and shall not be grounds for redress. A boat's position in the sequence of hailed numbers or broadcast numbers shall not be grounds for redress.

## 16. Trophies

- 16.1. Perpetual trophies will be awarded to the combined PHRF fleet as follows:
- 16.2. The Keating Coffey Flagship Trophy will be awarded to the highest finishing Present Commodore or representative Flag Officer who acts as the driver of the entered boat for at least 75% of the measured distance of the race, including the start, each mark rounding and the finish.
- 16.3. The Craig Trophy will be awarded to the highest LAYC finisher who did not also win the Keating Coffey Flagship Trophy
- 16.4. The Vanderbilt Trophy will be awarded to the highest non-LAYC finisher who did not also win the Keating Coffey Flagship Trophy.
- 16.5. Take home trophies will be awarded in each class on the following basis: up to 4 entries, 1 trophy; 5 to 7 entries, 2 trophies; 8 or more entries 3 trophies.

**17. Social Events and Hospitality** *There will be a get together and prizegiving for skippers and crews at LAYC after racing.*

## 18. Spare

### **\*Current Covid Statement:**

Please read the following Covid-19 related information carefully. 2023 is the fourth year of the Covid-19 Pandemic. The event named above is being held and organized in compliance with all the current requirements, policies, restrictions, and procedures promulgated by Federal, California State and local government entities that may apply during the Covid-19 Pandemic, This guidance shall be followed by LAYC volunteers, competitors, and other race staff.

LA County is experiencing high rates of COVID-19, flu, and RSV. These three respiratory diseases can all cause severe illness. It is recommended by County of Los Angeles Department of Public Health that everyone wear a mask in indoor public spaces. This includes the areas within Los Angeles Yacht Club.

As the Organizing Authority, LAYC will work within the guidelines listed below, unless there is a substantial change in health procedure protocol.

Registration will only be offered online at [www.layc.org](http://www.layc.org).

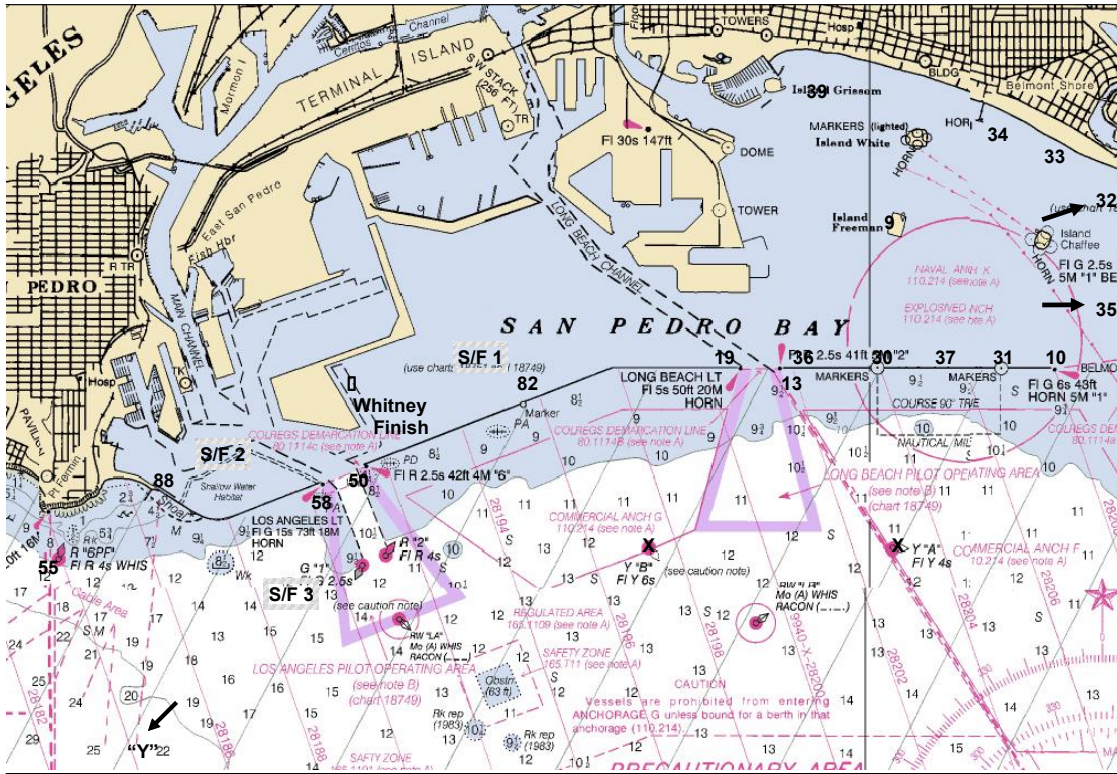
Sailing Instructions for each event will advise competitors about any scheduled gatherings at the clubhouse before or after racing, including skippers' meetings, hospitality, protests and trophy presentations.

Results will be posted as soon as possible on [www.layc.org](http://www.layc.org).

The person in charge of each boat is responsible for providing LAYC Race Committee with contact information for each crew member to enable individuals to be traced for any reason during or after the event. This list should be emailed to [tomtrujillo@me.com](mailto:tomtrujillo@me.com) and [kpcnut@aol.com](mailto:kpcnut@aol.com) before the start.



LOS ANGELES YACHT CLUB RACE COURSE CHART  
 NO. 2014-1



NOT TO BE USED FOR NAVIGATION

1/20/14

LAYC Courses  
 For Chart 2014-1

Course	Mark 1	Mark 2	Mark 3	Mark 4	Mark 5	Mark 6	Mark 7	Mark 8	Distance
1	S/F 1	50	19	S/F 1					7.5
2	S/F 1	19 (S)	50 (S)	S/F 1					7.5
3	S/F 1	55	S/F 1						8.0
4	S/F 1	13	10	S/F 1					8.5
5	S/F 1	19(S)	88(S)	S/F 1					9.5
6	S/F 1	50	9	S/F 1					10.5
7	S/F 1	9 (S)	50 (S)	S/F 1					10.5
8	S/F 1	88	82	88	S/F 1				11.2
9	S/F 1	55	19	S/F 1					11.5
10	S/F 1	19 (S)	55	S/F 1					11.5
11	S/F 1	50	10	S/F 1					11.8
12	S/F 1	55	9	S/F 1					14.0
13	S/F 1	55	35	S/F 1					18.4
14									
15									
16									
17									
18									
19									
20	S/F 2	88	82	S/F 2					5.5
23	S/F 2	82(S)	88(S)	S/F 2					5.5
24	S/F 2	88	82	88	S/F 2				6.4
28	S/F 2	88	55	S/F 2					6.8
29	S/F 2	88	9(S)	19(S)	58	S/F 2			12.6
37	S/F 3	55	19	9(S)	19(S)	S/F 3			14.5

- Mark Description & Location**
- S/F 1 Approx. 1.5 NM NE of LA Light
  - S/F 2 Approx. 1 NM NW of LA Light
  - S/F 3 Approx. 1.1 NM SW of LA Light
  - “Y” Traffic Lane Buoy Yellow “092”, approx 7.9 NM at 213° from LA Light
  - “W” Orange Inflatable Windward of S/F
  - “L” Orange Inflatable Leeward of S/F
  - 9 Oil Island Freeman
  - 10 East End of Long Beach Breakwater
  - 13 West End of Long Beach Breakwater
  - 19 East End of Middle Breakwater (LB Entrance)
  - 30 Yellow Spar, approx 100 yds N of West Measured Mile Marker
  - 35 Yellow Spar, approx 100 yds W from the end of the Seal Beach Mun. Pier
  - 36 Yellow Spar, approx 100 yds N and 1/2 NM W of W Meas. Mile Marker
  - 37 Yellow Spar, approx 100 yds N of 1/2 mile Measured Mile Marker
  - 39 Yellow Spar, 1/2 NM ENE of Island Grissom
  - 90 West End of Middle Breakwater
  - 55 Point Fermis White Buoy “R” 15”
  - 58 East End of San Pedro Breakwater (LA Light)
  - 82 Yellow Spar, approx. 1.5 NM at 52° from LA Light
  - 88 Yellow Spar, approx. 150 yds N of Gr. Channel Buoy #3

All Marks rounded to Port unless specified as (S) to Starboard

