



# 2023 LCYC STANDARD LONG DISTANCE SAILING INSTRUCTIONS

## **1 RULES**

The regatta will be governed by the rules as defined in *The Racing Rules of Sailing* (RRS) 2021 - 2024

## **2 NOTICES TO COMPETITORS**

Notices to competitors will be posted on Regatta Network website.

## **3 SIGNALS MADE ASHORE**

Signals made ashore will be displayed from the "Super Dock". If a postponement is signaled ashore, the warning signal will be made not less than thirty (30) minutes after flag AP is lowered.

## **4 COURSE**

The race course will be distributed at the Skipper's Meeting

## **5 STARTING LINE**

The starting line will be between the flag at the end of the main walkway and the no wake buoy nearest to the end of the main walkway. A Pursuit Start format will be used with starting times handed out on the Super Dock one hour prior to start of race. The first starting Flag will be raised at 20:00. The boat with the highest PHRF will start first at 20:00, followed by the next lowest PHRF, etc.

## **6 FINISH LINE**

The finish line will be between the flag at the end of the main walkway and the Pin (Yellow or Orange or Red Ball mark).

## **7 RACE COMMITTEE**

There will NOT be a race committee on the water. The start and finish are on the honor system. Report your finish time to Fred Lindsey.

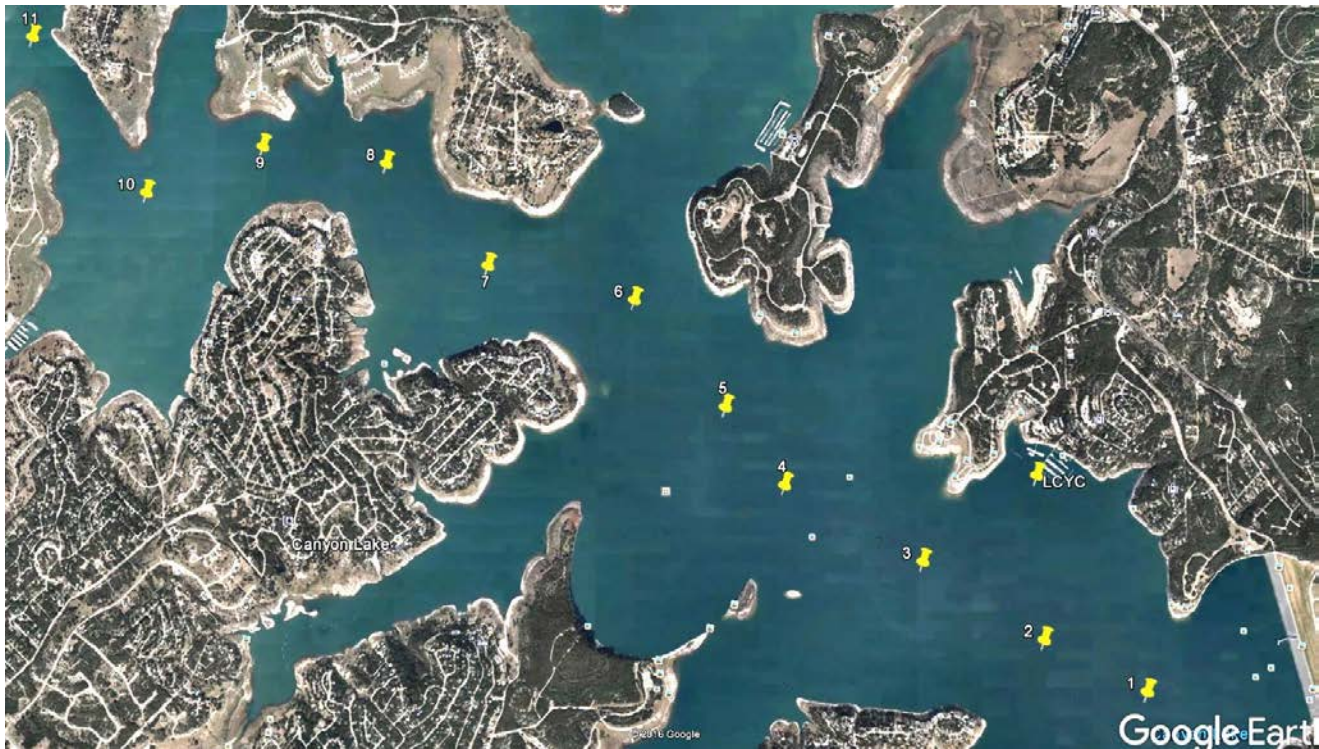
## **8 TIME LIMITS**

Any boat not finished by 16:00 will be scored DNF.

## **9 PHRF EQUIPMENT**

Any boat racing under the PHRF Handicap system must comply with PHRF requirements. If a boat desires to compete in the PHRF classes, she must either have the necessary equipment, or make declaration of deviations from the required equipment. Equipment deviations from PHRF requirements may result in changes to the PHRF Handicap rating assigned to that boat. Failure to declare a deviation from PHRF requirements shall, when discovered, result in being scored DISQUALIFIED NOT DISCARDABLE (DND) for the race, with the race counting toward the standings of the race, regatta, or series in accordance with RRS 2, Fair Sailing.

Course to be sailed: (see image)



### Canyon Lake: Distance and headings between Fixed Marks: nm@heading

TO FROM →	Home	1	2	3	4	5	6	7	8	9	10	11
↓ Home		0.89 @ 328	0.61 @ 353	0.54 @ 048	0.96 @ 082	1.21 @ 097	1.66 @ 108	2.23 @ 105	2.75 @ 110	3.22 @ 107	3.57 @ 102	4.21 @ 108
1	0.89 @ 148		0.43 @ 111	0.96 @ 114	1.55 @ 114	1.90 @ 118	2.42 @ 122	2.95 @ 117	3.50 @ 119	3.94 @ 116	4.24 @ 111	4.93 @ 114
2	0.61 @ 173	0.43 @ 291		0.54 @ 117	1.13 @ 115	1.48 @ 120	2.00 @ 124	2.53 @ 118	3.08 @ 120	3.51 @ 116	3.81 @ 110	4.51 @ 115
3	0.54 @ 228	0.96 @ 294	0.54 @ 297		0.59 @ 113	0.94 @ 122	1.47 @ 126	1.99 @ 118	2.54 @ 121	2.98 @ 116	3.28 @ 109	3.97 @ 115
4	0.96 @ 262	1.55 @ 294	1.13 @ 295	0.59 @ 293		0.37 @ 137	0.90 @ 135	1.40 @ 121	1.96 @ 123	2.38 @ 117	2.69 @ 109	3.38 @ 115
5	1.21 @ 277	1.90 @ 298	1.48 @ 300	0.94 @ 302	0.37 @ 317		0.54 @ 134	1.05 @ 115	1.60 @ 120	2.04 @ 113	2.37 @ 104	3.04 @ 112
6	1.66 @ 288	2.42 @ 302	2.00 @ 304	1.47 @ 306	0.90 @ 315	0.54 @ 314		0.58 @ 097	1.09 @ 113	1.55 @ 107	1.92 @ 097	2.55 @ 108
7	2.23 @ 285	2.95 @ 297	2.53 @ 298	1.99 @ 298	1.40 @ 301	1.05 @ 295	0.58 @ 277		0.56 @ 129	0.99 @ 112	1.35 @ 096	1.99 @ 291
8	2.75 @ 290	3.50 @ 299	3.08 @ 300	2.54 @ 301	1.96 @ 303	1.60 @ 300	1.09 @ 293	0.56 @ 309		0.48 @ 092	0.93 @ 077	1.47 @ 104
9	3.22 @ 287	3.94 @ 296	3.51 @ 296	2.98 @ 296	2.38 @ 297	2.04 @ 293	1.55 @ 287	0.99 @ 292	0.48 @ 272		0.48 @ 062	1.00 @ 110
10	3.57 @ 282	4.24 @ 291	3.81 @ 291	3.28 @ 289	2.69 @ 289	2.37 @ 284	1.92 @ 277	1.35 @ 276	0.93 @ 257	0.48 @ 242		0.76 @ 137
11	4.21 @ 288	4.93 @ 295	4.51 @ 295	3.97 @ 295	3.38 @ 295	3.04 @ 292	2.55 @ 288	1.99 @ 291	1.47 @ 284	1.00 @ 290	0.76 @ 317	

Core of Engineers Marking	Latitude	Longitude
1	N 29 51' 54.7"	W 098 12' 31.7"
2	N 29 52' 06.1"	W 098 12' 58.1"
3	N 29 52' 23.4"	W 098 13' 29.3"
4	N 29 52' 40.4"	W 098 14' 05.2"
5	N 29 52' 58.0"	W 098 14' 20.6"
6	N 29 53' 22.3"	W 098 14' 44.6"
7	N 29 53' 30.1"	W 098 15' 23.4"
8	N 29 53' 53.7"	W 098 15' 50.7"
9	N 29 53' 57.6"	W 098 16' 23.7"
10	N 29 53' 46.9"	W 098 16' 54.4"
11	N 29 54' 23.2"	W 098 17' 26.1"
Home Mark - Just outside LCYC	N 29 52' 42.6"	W 098 12' 59.2"