



**Venetian Cup**  
Venice youth Boating & Venice Yacht Club  
April 29, 2023  
VHF Ch 69

## **C420 / HS420 / ILCA 4, 6 Sailing Instructions**

### **1. RULES**

1.1 The regatta will be governed by the rules as defined in The Racing Rules of Sailing

### **2 NOTICES TO COMPETITORS**

2.1 Notices to competitors will be posted on the official notice board located at the VYC registration Area

### **3 CHANGES TO SAILING INSTRUCTIONS**

3.1 Any change to the sailing instructions will be posted before 0900 on the day it will take effect.

3.2 Changes made to the schedule of races for the day will be posted by 1800 the day before it shall take place

### **4 SIGNALS MADE ASHORE**

4.1 Signals made ashore will be displayed ashore from the VYC flagpole.

### **5 SCHEDULE OF RACES**

5.1 To alert boats that a race or sequence of races will begin soon, the orange starting line flag will be displayed with one sound at least **2 minutes** before a warning signal is made.

5.2 As many races as possible are scheduled. One race will constitute a regatta.

5.3 Races are scheduled as follows: No warning will be made after 1500.

#### **Saturday April 29<sup>th</sup>:**

0800	Check-In – Tent at VYC by Pool / Tiki Bar
0900	Skippers Meeting for all competitors
1000	First Signal for Optimist Green
1030	First Signal for All Other Classes
1500	No Warnings after this time

Awards to follow racing on lawn beside VYC Tiki Bar

## **6 CLASS FLAG**

6.1 C420/HS420 Class Flag- Blue Logo on White Background

6.2 ILCA 6 Class Flag- Red Laser Logo on White Background

6.3 ILCA 4 Class Flag- TBD

## **7 THE COURSE**

7.1 The course diagrams are in Attachment A. They show the courses, the order in which marks are to be passed, and the side on which each mark is to be left.

## **8 MARKS**

8.1 Start mark will be White Ball Buoy, Finish mark will be Orange Tetrahedron, Windward and gate will be single color cylinders, offset will be single color tetrahedron.

8.2 ILCA 4 will have shortened course with Windward and Offset being fluorescent inflatable balls. All other marks same.

## **9 THE START**

9.1 Races will be started by using RRS 26 modified.

9.3 Modified starting Sequence: **SEE AMENDMENT TO START SEQUENCE**

5 min warning-orange starting line flag- one signal

3 min warning-class flag raised- one signal

2 min warning-prep flag raised-one signal

1 min warning-prep flag lowered-one long signal

30 sec warning- 3 short

20 sec warning- 2 short

10 sec warning- 1 short

5-4-3-2-1- short blast 1 sec apart

Start-class flag lowered- one signal

9.2 The starting line will be between a staff displaying an orange flag on the signal boat and the course side of the starting mark

9.4 A boat that does not start within 5 minutes after starting signal will be scored **Did Not Start** without a hearing.

## **10 CHANGE OF THE NEXT LEG OF THE COURSE**

10.1 Marks can will only be adjusted between races.

## **11 THE FINISH**

11.1 The finishing line will be between a staff displaying an orange flag on the signal boat and the course side of the finishing Line.

## **12 TIME LIMITS**

12.1 The following time limits will apply:

- Race Time Limit Is 60 minutes-Time limit for the first boat to sail the course and finish
- Finishing Window is 20 minutes-Time limit for the boats to finish after the first boat sails the course and finishes

12.2 Boats failing to finish within the Finishing Window shall be scored DNF without a hearing. This changes RRS 35,63.1 and A5.1

## **13 PROTESTS AND REQUESTS FOR REDRESS**

13.1 The protesting boat shall inform the other boat at the first reasonable opportunity AND inform the Signal Boat of a protest. RRS 61.1

13.2 Protest forms are available at the race office (by VYC pool). Protests and requests for redress or reopening shall be delivered there within the appropriate time limit.

13.3 The protest time limit is **30 minutes after the last race committee boat** has docked.

13.4 Notices will be posted no later than 10 minutes after the protest time limit to inform competitors of hearings in which they are parties or named as witnesses and where the hearings will be held.

13.5 Notices of protests by the race committee, technical committee or protest committee will be posted to inform boats under RRS 61.1(b).

## **14. SCORING**

14.1 The Low Point System of Appendix A will apply

14.2 When fewer than six (6) races have been completed, a boat's series score will be the total of her race scores

14.3 When six (6) or more races have been completed, a boat's series score will be the total of her race scores excluding her worst score.

## **15 SAFETY REGULATIONS**

**15.1 Check-In with the Signal Boat before the initial warning signal of the first race of the day by sailing near the Signal Boats stern on a starboard tack and hailing your sail number until acknowledged by the Signal Boat. Failure to check in may result in a penalty.**

15.2 A boat retiring from the race shall notify a Race Committee vessel before leaving the course, or, when that is not possible, notify the Race Office immediately upon arriving ashore.

15.3 All competitors shall always wear personal floatation devices while afloat

## **16 SUPPORT BOATS**

16.1 Support vessels shall monitor **VHF Channel # 69**

16.2 All support boats equipped with an emergency cutoff switch, the operator shall always wear the associated lanyard when in the vicinity of competitors, the sailing area, and VYBA/VYC/Higel docks.

16.3 Team leaders, coaches, and other support persons shall stay outside areas where boats are racing from the time of the preparatory signal for the first class to start until all boats have finished or retired or the race committee signal postponement or abandonment.

16.4 All coach boats and other support boats shall come to the aid of any competitor in distress or requesting assistance.

16.5 All support boats shall comply with US Coast Guard regulations.

## 17 PRIZES

17.1 Prizes will be given to the top finishers.

## 18 LUNCHES

18.1 Lunch is provided for competitors. Coaches need to pick those up at the registration table and take them with you on the boats. There is no lunch boat! \*If there is an allergy you can request a special lunch and we will try to accommodate\*

## 19 CLEAN REGATTA

19.1 Please follow our clean regatta guidelines

19.2 Refillable water bottles

19.3 Reduce, Reuse, Recycle

19.4 See trash on land or in the water, pick it up. Each coach, support, committee boat is equipped with a trash bag for you. Any boat will take your trash.



# ATTACHMENT A- COURSE

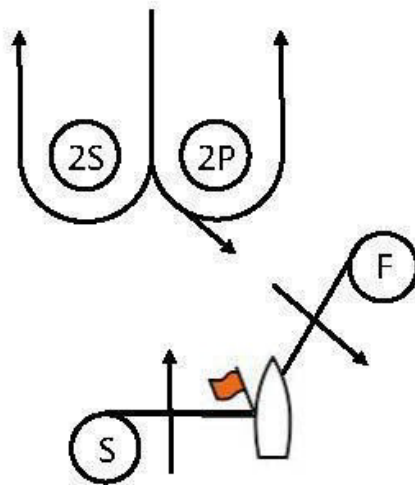
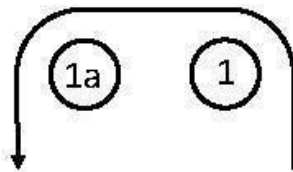
## Windward-Leeward Course Diagram, Reaching Finish

**Course WL** – Windward/Leeward, Reaching Finish

Mark Rounding Order Start – 1 – 1a – 2P – Finish

**Course WL2** – Windward/Leeward, Reaching Finish

Mark Rounding Order: Start – 1 – 1a – 2S/2P – 1 – 1a – 2P - Finish



S-Start Pin- White Ball

F- Finish mark- Orange Tetrahedron

1-Windward mark- Large Yellow Cylinder

1a-Offset-Orange Tetrahedron

2S/2P-Gate-Large Orange Cylinders

ILCA 4-shortened Course (not shown)

Windward-Offset- Fluorescent Inflatable Balls

## Amendment to Sequence:

### 3minute start sequence-

Minutes to start	Period	Visual	Sound
3 min	Warning	Raise Fleet Flag	3 long
2 min	Preparatory	Raise Prep Flag	2 long
1 min	Preparatory	Lower prep Flag	1 long
30 sec	Preparatory	No visual	3 short
20 sec	Preparatory	No visual	2 short
10 sec	Preparatory	No visual	1 short
5,4,3,2,1	Preparatory	No visual	5 consecutive short
0	Start	Lower Fleet Flag	1 long