

35th Annual Sailfest Regatta
C420/ILCA 4,6
SAILING INSTRUCTIONS
 Course VHF Channel 71

1. RULES

- 1.1. The regatta will be governed by the rules as defined in *The Racing Rules of Sailing*.
- 1.2. SI breaches for which a discretionary penalty may be applied by the protest committee are designated by “[DP]” Discretionary Penalty.

2. NOTICES TO COMPETITORS

- 2.1. Notices to competitors will be posted on the official notice board located at the Squadron Pavilion.

3. CHANGES TO SAILING INSTRUCTIONS

- 3.1. Any change to the sailing instructions will be posted before 0900 on the day it will take effect, except that any change to the schedule of races will be posted by 1800 on the day before it will take effect.

4. SIGNALS MADE ASHORE

- 4.1. Signals made ashore will be displayed ashore from the Squadron flagpole.
- 4.2. When flag AP is displayed ashore, ‘1 minute’ is replaced with ‘not less than 60 minutes’ in the race signal AP.

5. SCHEDULE OF RACES

- 5.1. Races are scheduled as follows:

| | | |
|---------------------|-------------|-------------------------|
| Friday, March 31st | 1600 - 1830 | Check-In |
| Saturday, April 1st | 0800 - 0900 | Check-in |
| | 930 | Skippers Meeting |
| | 1030 | First Signal |
| Sunday, April 2nd | 0930 | First Signal |
| | 1400 | No Warning Signal After |

- 5.2. On the last scheduled day of racing no warning signal shall be made after 1400. Awards to follow after racing.

6. Class flags are as follows:

Class C420 Class Flag - Blue Logo on White Background

Class ILCA 6 Class Flag - Red Laser Logo with Green Background

Class ILCA 4 Class Flag - Red Laser Logo on Yellow Background

7. THE COURSE

7.1. The course diagrams are on the pages following SI 15. They show the courses, the order in which marks are to be passed, and the side on which each mark is to be left.

8. MARKS

8.1. Rounding marks will be orange Inflatable tetrahedrons (except for ILCA 4 Windward mark)

8.2. Windward offset mark will be a small ball type mark.

8.3. ILCA 4s will have a shorter windward mark with a small red tetrahedron and small ball type mark for the offset

8.4. New marks will be green inflatable tetrahedrons.

8.5. The Start mark will be an orange Inflatable tetrahedron.

8.6. The finish mark will be a small ball type mark.

9. THE START

9.1. Races will be started by using RRS 26.

9.2. The starting line will be between a staff displaying an orange flag on the Signal boat and the course side of the starting mark.

9.3. A boat that does not start within 4 minutes after her starting signal will be scored Did Not Start without a hearing. This changes RRS A4 and A5.

10. CHANGE THE NEXT LEG OF THE COURSE

10.1. To change the next leg of the course, the RC may lay a new mark (or move the finishing line) and remove the old marks as soon as practicable.

11. THE FINISH

11.1. The finishing line will be between a staff displaying an orange flag on the Signal boat and the course side of the finishing mark.

12. TIME LIMITS

12.1. The following time limits will apply:

| | |
|--------------------------------|--|
| Race Time Limit is 60 minutes | Time limit for the first boat to sail the course and finish. |
| Finishing Window is 20 minutes | Time limit for boats to finish after the first boat sails the course and finishes. |

12.2. Boats failing to finish within the Finishing Window shall be scored Did Not Finish without a hearing. This changes RRS 35, A4 and A5.

13. PROTESTS AND REQUESTS FOR REDRESS

- 13.1. Protest forms are available at the race office. Protests and requests for redress or reopening shall be delivered there within the appropriate time limit.
- 13.2. For each class, the protest time limit is 60 minutes after the Signal Boat docks or the race committee signals no more racing today ashore, whichever is later.
- 13.3. Notices will be posted no later than 10 minutes after the protest time limit to inform competitors of hearings in which they are parties or named as witnesses and where the hearings will be held.
- 13.4. Notices of protests by the race committee, technical committee or protest committee will be posted to inform boats under RRS 61.1(b).
- 13.5. On the last scheduled day of racing a request for redress based on a protest committee decision shall be delivered no later than 30 minutes after the decision was posted. This changes RRS 62.2.

14. SCORING

- 14.1. The Low Point System of Appendix A will apply.
- 14.2. When fewer than six (6) races have been completed, a boat's series score will be the total of her race scores.
- 14.3. When six (6) or more races have been completed, a boat's series score will be the total of her race scores excluding her worst score.

15. SAFETY REGULATIONS

- 15.1. Check-In with the Signal Boat before the initial warning signal of the first race of each day by sailing near the Signal Boats stern on a starboard tack and hailing your sail number until acknowledged by the Signal Boat. Failure to check in may result in a penalty. [DP]
- 15.2. A boat retiring from the race shall notify a Race Committee vessel before leaving the course, or, when that is not possible, notify the Race Office immediately upon arriving ashore. [DP]

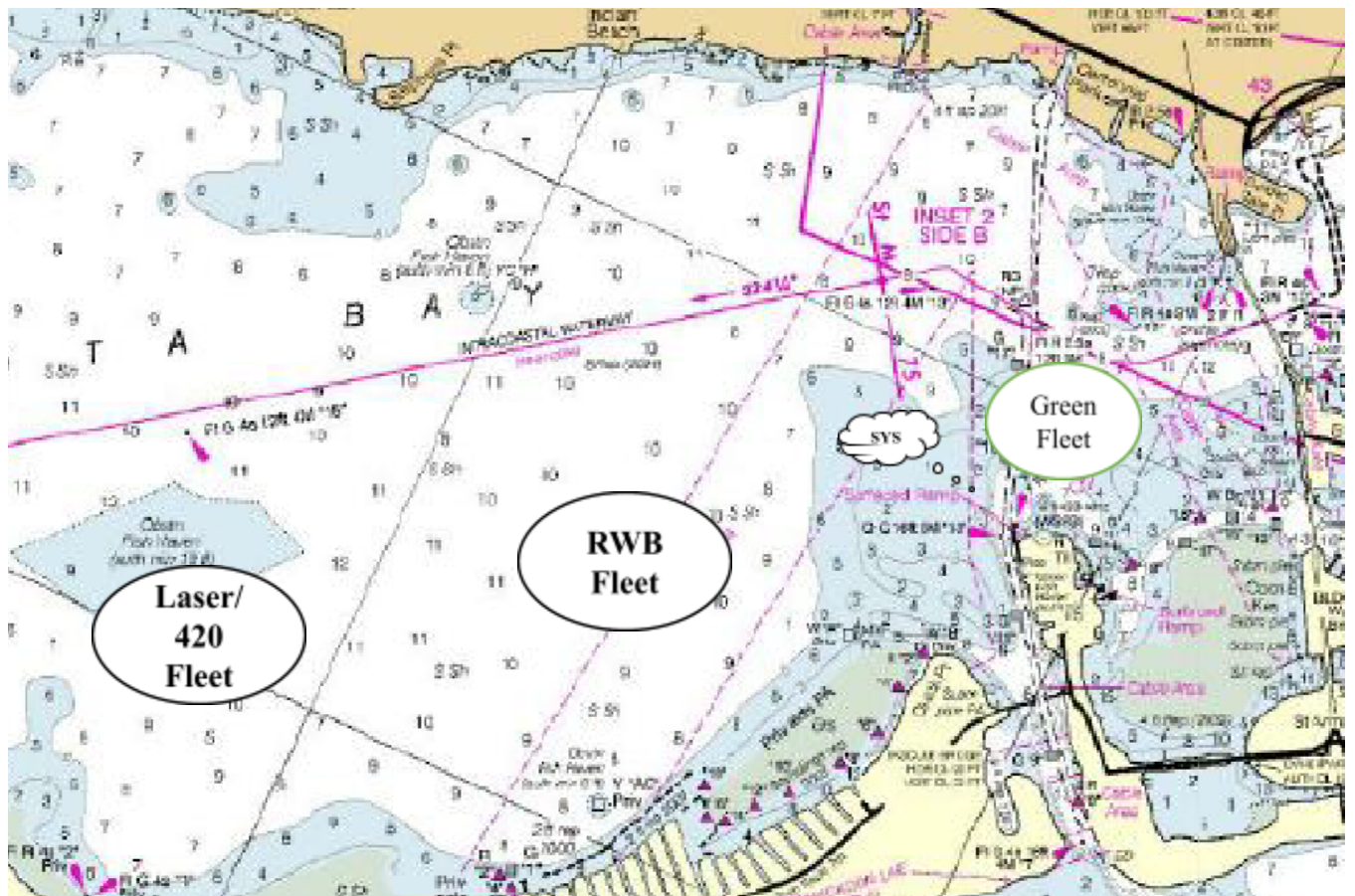
16. SUPPORT BOATS

- 16.1. Team leaders, coaches, and other support persons shall stay outside areas where boats are racing from the time of the preparatory signal for the first class to start until all boats have finished or retired or the race committee signal postponement or abandonment. [DP]
- 16.2. All support boats equipped with an emergency cutoff switch, the operator **MUST** always wear the associated lanyard when in the vicinity of competitors, the sailing area, and the Squadron. [DP].
- 16.3. All coach boats and other support boats shall come to the aid of any competitor in distress or requesting assistance. [DP]
- 16.4. All support boats shall comply with US Coast Guard regulations. [DP]

17. PRIZES

- 17.1. Prizes will be given to the top finishers.

RACING AREA:



COURSE DIAGRAMS

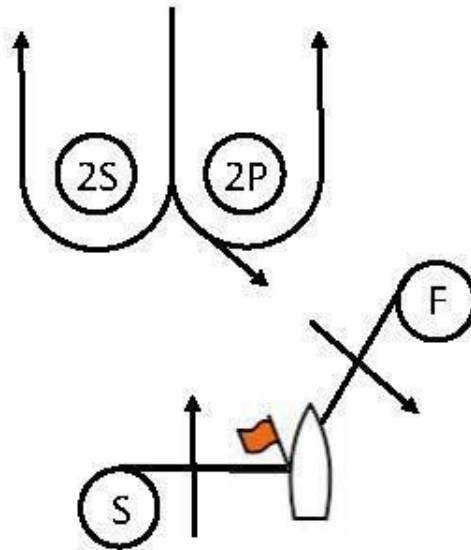
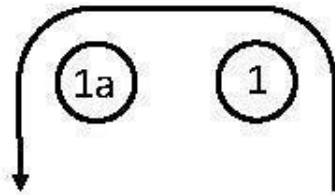
Windward-Leeward Course Diagram, Reaching Finish

Course WL – Windward/Leeward, Reaching Finish

Mark Rounding Order Start – 1 – 1a – 2P – Finish

Course WL2 – Windward/Leeward, Reaching Finish

Mark Rounding Order: Start – 1 – 1a – 2S/2P – 1 – 1a – 2P - Finish



Sailfest 35th Annual Regatta
April 1 - 2, 2023
Sailing Instructions
C420 / ILCA 4 and 6 FLEET AMENDMENT # 1

SI 8. MARKS is changed to:

- 8.1. The course diagrams are on the pages following SI 15. They show the courses, the order in which marks are to be passed, and the side on which each mark is to be left. Rounding marks will be orange Inflatable tetrahedrons (except for ILCA 4 Windward mark)
- 8.2. Windward offset mark will be a small ball type mark.
- 8.3. ILCA 4s will have a shorter windward mark with a small red tetrahedron **LARGE YELLOW SPIKEY BALL** and ~~small ball type mark for the offset.~~
- 8.4. New marks will be green inflatable tetrahedrons.
- 8.5. The Start mark will be an ~~orange Inflatable tetrahedron~~ **RED INFLATABLE CYLINDER TYPE MARK.**
- 8.6. The finish mark will be a small ball type mark.

Posted by the Race Committee: Scott Liebel

Date / Time: 1600 Friday March 31, 2023