



SAILFEST
 Sarasota Youth Sailing & Sarasota Sailing Squadron
 April 1 & 2, 2023
 VHF Ch 11



GREEN FLEET SAILING INSTRUCTIONS

Opti Class Philosophy: USODA is a teaching class and GREEN FLEET is its introductory fleet for novice sailors. The Rules of Sailing are important and taught but learning to race while having fun is equally stressed. These sailing instructions are structured within The Racing Rules of Sailing to provide a flexible, less structured and less formal racing environment. Green Fleet is not scored. All participants receive participation awards. While race placement and progress may be tracked, who places first is less important than learning, improving, and having fun along the way. Parents and competitors who are looking for a more competitive environment should consider the Championship Fleet red, white and blue racing divisions.

1. RULES

- 1.1. The regatta will be governed by the rules as defined in *The Racing Rules of Sailing*.
- 1.2. SI breaches for which a discretionary penalty may be applied by the protest committee are designated by “[DP]” Discretionary Penalty.

2. NOTICES TO COMPETITORS

- 2.1. Notices to competitors will be posted on the official notice board located at the Squadron Pavilion.

3. CHANGES TO SAILING INSTRUCTIONS

- 3.1. Any change to the sailing instructions will be posted before 0900 on the day it will take effect, except that any change to the schedule of races will be posted by 1800 on the day before it will take effect.

4. SIGNALS MADE ASHORE

- 4.1. Signals made ashore will be displayed ashore from the Squadron flag pole.
- 4.2. When flag AP is displayed ashore, ‘1 minute’ is replaced with ‘not less than 60 minutes’ in the race signal AP.

5. SCHEDULE OF RACES

- 5.1. Races are scheduled as follows:

Friday, March 31st	1900 - 1930	Check-in
Saturday, April 1st	0800 - 0900	Check-in
	0930	Skippers meeting
	1045	First Warning
Sunday, April 2nd	1000	First Warning
	1400	No Warning Signal After

- 5.2. On the last scheduled day of racing no warning signal shall be made after 1400. Awards to follow racing.

6. Class flags are as follows:

- 6.1. OPTI Logo on a green flag



7. THE COURSE

- 7.1. The course diagrams are on the pages following SI 15. They show the courses, the order in which marks are to be passed, and the side on which each mark is to be left.

8. MARKS

- 8.1. Windward mark will be a short red Tetrahedron.
8.2. Wing mark and Leeward mark will be Orange Inflatable cylinders.
8.3. The start/finish mark will be a Green Inflatable Tetrahedron.

9. THE START

- 9.1. Races will be started by using RRS 26.
9.2. The starting line will be between a staff displaying an orange flag on the race committee vessel and the course side of the starting mark.
9.3. A boat that does not start within 4 minutes after her starting signal will be scored Did Not Start without a hearing. This changes RRS A4 and A5.

10. THE FINISH

- 10.1. The finishing line will be between a staff displaying an orange flag on the race committee vessel and the course side of the finishing mark.

11. TIME LIMITS

- 11.1. The following time limits will apply:

Race Time Limit is 60 minutes	Time limit for the first boat to sail the course and finish.
Finishing Window is 20 minutes	Time limit for boats to finish after the first boat sails the course and finishes.

- 11.2. Boats failing to finish within the Finishing Window shall be scored Did Not Finish without a hearing. This changes RRS 35, A4 and A5.

12. PROTESTS AND REQUESTS FOR REDRESS

- 12.1. Since Green Fleet is not scored, protests are teaching opportunities. An open discussion of the protest process (mock protest) may be held if resources are available. All competitors, parents and coaches are encouraged to attend and observe.

13. COACHING

- 13.1. Coaching is encouraged by the race committee. Coaching should focus on the bottom half of the fleet. Coaching on the water is for all, and all coaches are required to assist all sailors. All coaches are required to have VHF radios on and operating on the Green Fleet race committee channel, VHF 11, while racing is underway. The race committee has the right to remove from the Green Fleet course any coach who disregards the instructions of the race committee.

14. SAFETY REGULATIONS

- 14.1. Check-In with the Signal Boat before the initial warning signal of the first race of each day by sailing near the Signal Boats stern on a starboard tack and hailing your sail number until acknowledged by the Signal Boat. Failure to check in may result in a penalty. [DP]
- 14.2. A boat retiring from the race shall notify a Race Committee vessel before leaving the course, or, when that is not possible, notify the Race Office immediately upon arriving ashore. [DP]

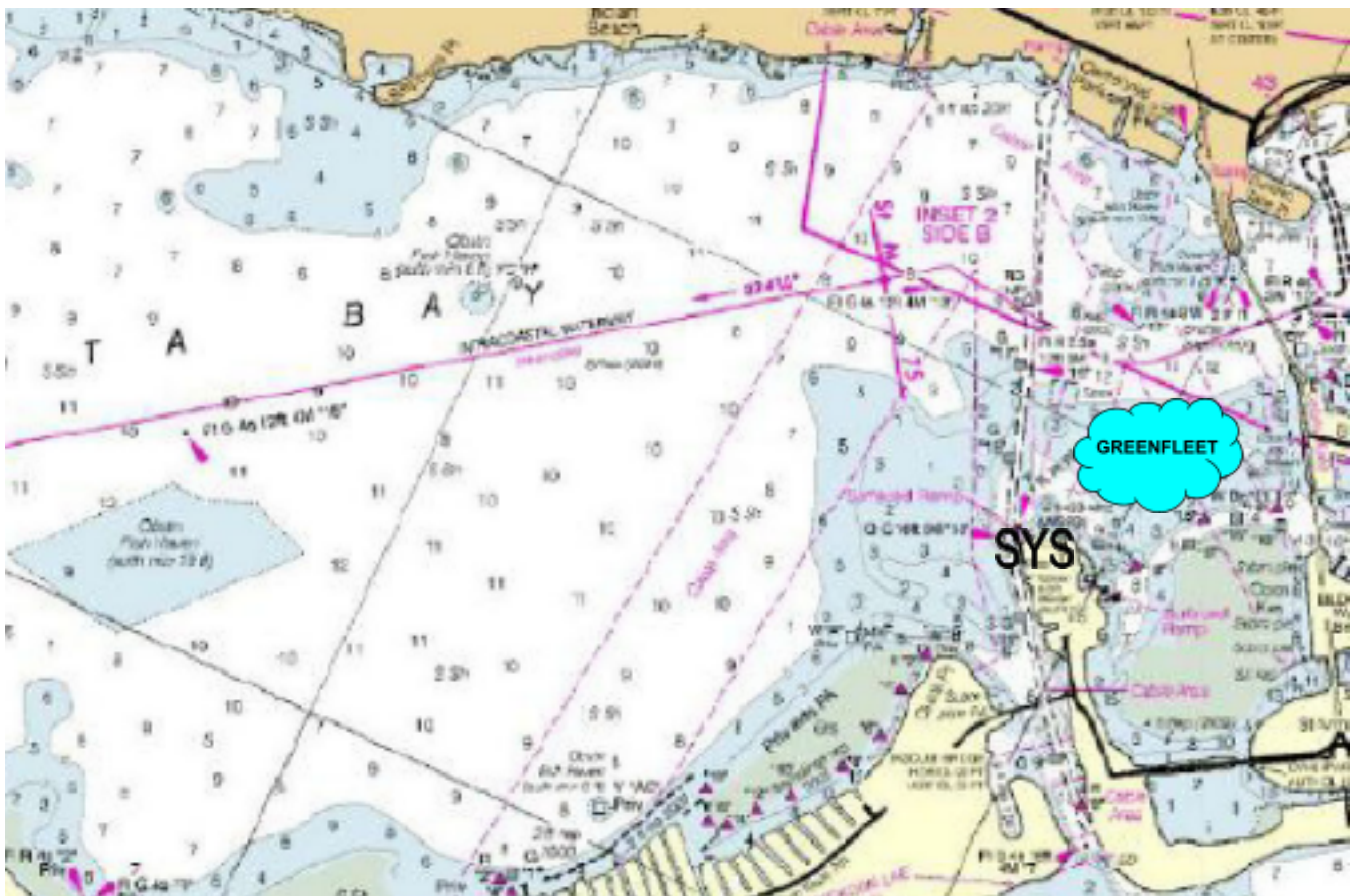
15. SUPPORT BOATS

- 15.1. Team leaders and other support persons shall stay outside areas where boats are racing from the time of the preparatory signal until all boats have finished or retired or the race committee signals postponement or abandonment. [DP]
- 15.2. All support boats must be equipped with an emergency cutoff switch, the operator shall always wear the associated lanyard when in the vicinity of competitors, the sailing area, and the Squadron. [DP].
- 15.3. All coach boats and other support boats shall come to the aid of any competitor in distress or requesting assistance. [DP]
- 15.4. All support boats shall comply with US Coast Guard regulations. [DP]

16. PRIZES

- 16.1. All participants receive participation awards. While placement and progress may be tracked, scores are less important than learning, improving, and having fun along the way.

RACING AREA

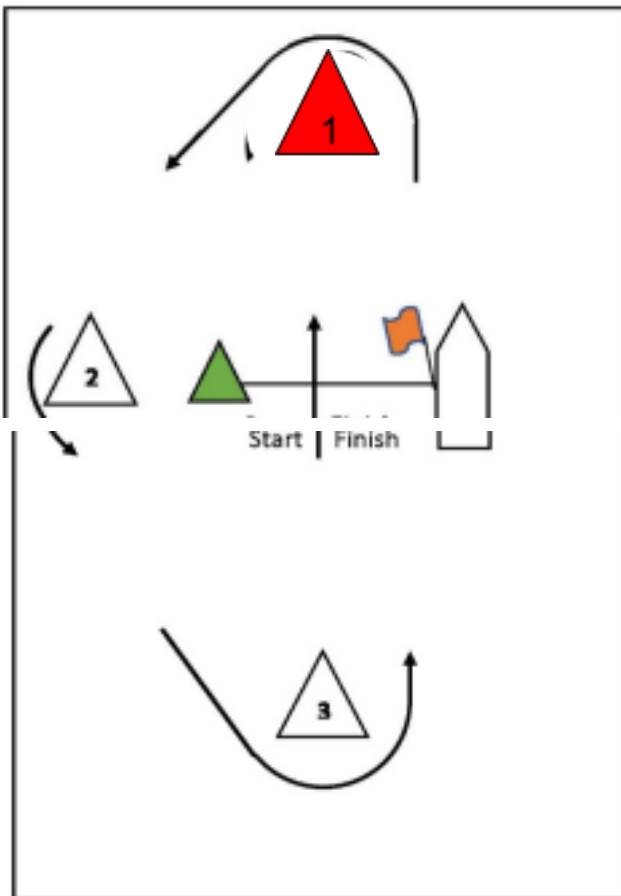


COURSE DIAGRAM

Course T - Triangle, Mid-Line Start/Finish

Mark Rounding Order Start – 1 – 2 – 3 - Finish

Green Fleet Course Triangle	
Signal	Mark Rounding Order
TL1	Start – 1- 2 -3 – Finish



Sailfest 35th Annual Regatta

April 1 - 2, 2023

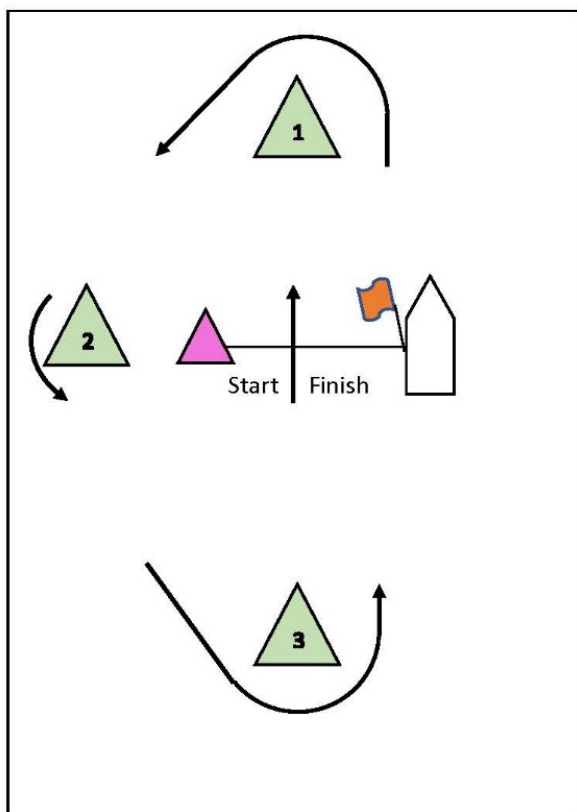
Sailing Instructions

GREEN FLEET AMENDMENT # 1

SI 8. MARKS is changed to:

- 8.1. Windward mark will be a short red **GREEN Tetrahedron**.
- 8.2. Wing mark and Leeward mark will be Orange **GREEN Tetrahedrons**-cylinders.
- 8.3. The start/finish mark will be a Green **PINK Tetrahedron**.

Green Fleet Course Triangle	
Signal	Mark Rounding Order
TL1	Start - 1- 2 -3 - Finish



Posted by the Race Committee: Alan Staniforth

Date / Time: 1600 Friday March 31, 2023